

923 Farm Equipment



Unverferth 1225: 24' rolling harrow with double baskets. New in 2012. \$7,000 OBO. Ferndale, CA. 707-845-1593



**Jay's EQUIPMENT SEAT COVERS**  
PROTECT YOUR SEATS  
Equipment Seat Covers Fits: Tractors, Forklifts, Loaders, Backhoes, Skid Steers, Excavators, Semi Trucks, More. 541-401-5933 EquipmentSeatCovers.com

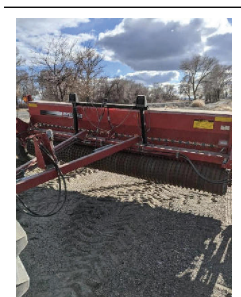


**Rears 84ft Pendulum Boom.** Almost Never Used. Excellent condition. \$5,500. Gresham, OR. Tim 503-719-2545

**Disc Ripper:** 7 shank, Case 690 Conser-till. New front blades last season, brand new back blades now, \$18,000 OBO. Turner, OR. 503-932-6080



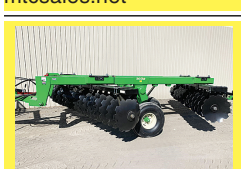
**Tyler Bank Out Wagon.** Rear Discharge, 12 ton, \$10,000. Lovelock, NV. 775-422-7733



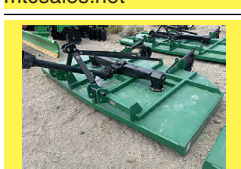
**Brillion SS112.** 600 acres on meter, \$14,000. Lovelock, NV. 775-422-7733



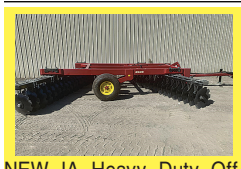
**NEW IA Pasture Aerators:** Bolt on teeth. Heavy Duty Frame. •8ft \$6,595 •10ft \$9,995 •12ft \$10,995 •27ft wing fold, \$27,900. Includes cement blocks. Bend, OR. 541-548-7185 mtcsales.net



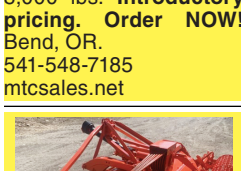
**NEW IA Super Duty Offset Wheel Discs.** EZ Adjust Gang Angle. 30" notched blades front and rear, adjustable scraper kit, 2" gang shafts, split gang shafts, high clearance. Approximately 14,000 lbs. •16ft \$24,900 •21ft \$27,400 •10ft to 25ft Bend, OR. 541-548-7185 mtcsales.net



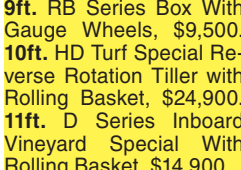
**NEW IA Rotary Mowers** •6ft. 3 Point \$1,795 •7ft. 3 Point \$1,995 •10ft. 3 Point \$3,695 •12ft. 3 Point \$3,995 Bend, OR. Call Scott 541-548-7185. Visit: mtcsales.net



**NEW IA Heavy Duty Offset Wheel Discs.** Scraper kit, EZ adjust gang angle, split gang axles, 26" notched blades front and rear. •12ft. \$13,400 •15ft. \$14,900 •18ft. \$16,400. 8ft.-22ft. 8,000 lbs. Introductory pricing. Order NOW! Bend, OR. 541-548-7185 mtcsales.net



**Northwest Tillers** 9ft. RB Series Box With Gauge Wheels, \$9,500. 10ft. HD Turf Special Reverse Rotation Tiller with Rolling Basket, \$24,900. 11ft. D Series Inboard Vineyard Special With Rolling Basket, \$14,900. All In Excellent Condition Bend, OR. Call Scott 541-548-7185 See at: mtcsales.net



400 gallon Turbo Mist airstab, new AR pump, electric valves. Field ready, \$10,000. Silverton, OR. 503-932-0766

923 Farm Equipment



**NEW IA Hydraulic Box Scrapers with hydraulic tilt** •LD 7ft. \$2,150 •LD 8ft. \$2,350 •LD 10ft. \$2,550 •LD 12ft. \$2,750 •HD 8ft. \$3,595 •HD 10ft. \$3,795 •HD 12ft. \$3,995 •HD 14ft. \$4,295 Bend, OR. 541-548-7185 mtcsales.net



**New IA Subsoilers** 26" Clearance •3 Shank \$2,595 •5 Shank \$2,995 •7 Shank \$3,595 Gauge Wheel Set, Add \$950. •HD Subsoilers with Dual Gauge Wheels. Weight 4,500 to 5,500 lbs. 30" Clearance. •7 Shank \$7,995. •9 Shank \$8,995. •11 Shank \$9,995. Bend, OR. 541-548-7185 mtcsales.net

**JOHN DEERE 9660WTS COMBINE:** 2220 separator hours. 2968 engine hours. MacDon PW7 pickup header, PFP performance internal parts (call for details). Very nice grass machine, \$87,500 or \$77,500 without header, Molalla OR, call/text 503-201-2777, 503-867-0186

**Willmar 765 Sprayer:** 500 hours on hydrostatic drive and planetary hubs. Paint and tires. 60ft boom, 600 gallon, GPS, \$29,000. Scio, OR. Evenings 503-394-2423

**John Deere 9600 combines** with pickup headers. 3600 hours. Spike and rasp, \$15,000 each Lafayette, OR. 503-437-4833

**Schafer 16ft offset disc,** 26" new blades, with packer hitch. Excellent Condition, \$7500 OBO. Othello, WA. 509-760-3276



**1976 John Deere 6600 side hill combine:** 3000 hours with 1 piece belt pick up. Great shape. \$4,000. Gresham, OR. Tim 503-719-2545

**Moving Sale!** Everything must go. MAKE OFFERS. Tractors, Loaders, Manure spreaders, plows, discs, hay equipment. Hundreds of items! Rickreall, OR. 503-838-3740; 503-383-6722



**Miller Nitro 3200T Sprayer:** 90ft boom, 1,000 gallon stainless steel tank. Only 1665 hours, \$60,000. Aumsville, OR. 503-931-8781



**Northwest Rototiller:** 14ft dual drive, oil cooler, basket crumbler, \$35,000. Aumsville, OR. 503-931-8781

**Tractors:** (2) Case International 485 Quadtrac. John Deere 8870, duals. Case Intentional MX240 FWD. John Deere 2555 4WD with loader. Fendt model 724. Vario, 660 hours. Discs: 30ft Kello built disc. 2018 30ft Sunflower disc.

**Miscellaneous:** Brillion 30ft roller. Freightliner FL70 fuel truck. (2) GK Machine drip line roller. (5) GK nursery trailers, 8x16. 3000 gallon triple wall fuel tank. 530C disc ripper. Orkel Dens X compactor/baler Silverton, OR. 503-551-5809



**GK 600 Gallon Spray Unit for Swamp Buggy 3W6.** Very good shape. 600 Gallon stainless steel tank, 80ft. booms Negotiable, \$27,500. Roseburg, OR. 541-643-5979



**GreyN Fertilizer Specialist** For a complete selection, visit us at [www.fertilizer-equipment.net](http://www.fertilizer-equipment.net) 406-466-5356 Choteau, MT



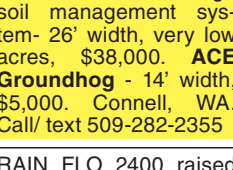
2017 TerraGator 8400B, AirMax Precision 2, 2533 hrs. \$184,000

923 Farm Equipment



**John Deere 630R:** platform header. Excellent shape. With multi-point hook up. Includes trailer, \$12,500. Gresham, OR. 503-719-2545

**RETIRING Sterling Packer-** 28' width, 18ft center section, usable without wings, low acres, \$10,000. John Deere VT2623 vertical tillage soil management system- 26' width, very low acres, \$38,000. ACE Groundhog - 14' width, \$5,000. Connell, WA. Call/text 509-282-2355



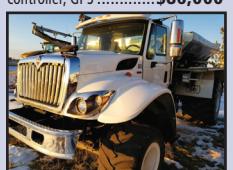
**RAIN FLO 2400** raised bed plastic layer, lays dual drip lines. RAIN FLO 1200 two row transplanter with water tanks. Both are like new with only 50 ac, \$4200. Junction City, OR 541-554-4891. Junction City, OR. 541-554-4891



**Loftness Heavy Duty 15' Stalk Chopper/Flail Mower** with 4 Gauge wheels. Large 1000 PTO Shaft. All Blades and Bearings are BRAND NEW. Tires in Good Condition. Hydraulic and Manual height adjustments. Excellent condition, \$8000 OBO Moses Lake, WA. 509-760-0128



2017 TerraGator 8400B, AirMax Precision 2, 2533 hrs. \$184,000



2016 TerraGator 8400B, AirMax Precision 2, 1178 hrs. \$184,500



2015 TerraGator 8400B, AirMax Precision 2, granular bins, 3640 hrs. \$132,500



2014 TerraGator 8400B, AirMax Precision 2, granular bins, 3500 hrs. \$123,500



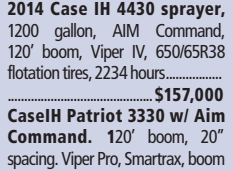
2006 Peterbilt 335 floater truck. Newton Crouch spreader bed. (Chandler) twin spinners, 2490 hours, 47,627 miles, Midtech controller, GPS. \$86,000



2010 International 7400, 310 Diesel engine, Allison auto, New Leader L4000 G4, 3,066 hrs. \$88,000



2014 CaseIH 4530, Flex-Air 810, Raven Viper Pro, 2 product, 1469 hrs. \$143,500



2015 CaseIH 4530, Flex-Air 810, multiproduct, 2964 hrs. \$148,000



2011 Case IH 3520 3 Bin, 3128 hours, Viper Pro Trimble 750, Very nice truck. \$109,000

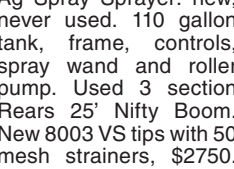


2016 Case IH Titan 3540, 1,512.1 hours. \$161,000

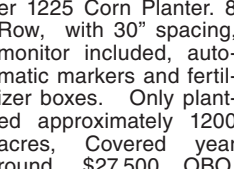
923 Farm Equipment



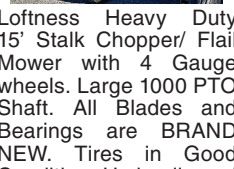
**Ag Spray Sprayer:** new, never used. 110 gallon tank, frame, controls, spray wand and roller pump. Used 3 section Rears 25' Nifty Boom. New 8003 VS tips with 50 mesh strainers, \$2750. Bow, WA. 360-707-1346



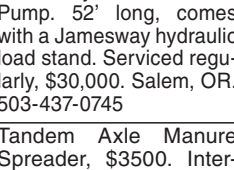
2015 Case Early Riser 1225 Corn Planter. 8 Row, with 30" spacing, monitor included, automatic markers and fertilizer boxes. Only planted approximately 1200 acres. Covered year round, \$27,500 OBO. Moses Lake, WA. Call 509-760-0128



•Byron 1514 Dump Chief, \$40,000. •Ag Rain turbine drive traveler, \$10,000 •14ft Northwest Rotary Tiller, \$4500 •1987 Freightliner 21' flat bed and hoist, 6' racks, \$34,000 •1991 EL-20 Pixall cornstalker with Fargo dump box, \$40,000. •2008 Wil-Rich V957 disc-ripper, \$12,000. •1981 Case 4890 tractor, 7347 hours, \$10,000. Aumsville, OR. Call 503-551-1793



**NEW IA Switch Plows** •3 Bottom \$7,995 •4 Bottom \$8,995 •5 Bottom \$9,995 •6 Bottom \$14,995 •7 Bottom \$15,995 Poly Wear Armor HD Components Trip Bottoms Bend, OR. Call Scott 541-548-7185 mtcsales.net



**Jamesway Ultra Manure Pump.** 52' long, comes with a Jamesway hydraulic load stand. Serviced regularly, \$30,000. Salem, OR. 503-437-0745



**Tandem Axle Manure Spreader,** \$3500. International PTO Spreader, \$2750. John Deere Ground Drive Spreader, \$1950. John Deere, \$950. New Idea, \$950. Several others also available. Rickreall, OR. 503-838-3740



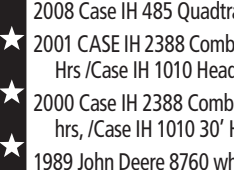
**Western STORAGE TRAILERS** 1-800-OK-2-RENT Rent or Sale Containers and Trailers  
**CONTAINERS: 20' & 40'**  
**TRAILERS: 27', 40', 45' & 48'**  
**Western Mobile Storage** 1-800-652-7368 • 541-342-1835 Eugene, OR 5223841-1



**Hydra-Pull** • 10 MODELS/SIZES • RENTAL OPTIONS • MADE IN USA • MANURE & COMPOST • HEAVY DUTY DESIGN  
**BARR-TECH** Compost / Organics Recycling AUTHORIZED DEALER OF PIK RITE SPREADERS. 509-590-0437 • www.Barr-Tech.net • Sprague, WA 5224979-1



**Containers For Sale** 20' and 40' REFRIGERATED CONTAINERS AVAILABLE  
9449 N. Burgard Way, Portland OR Call Alan Conner (503) 286-5961, Ext.#4 or 1-800-788-5159, Ext.#4 boxsales@pdxcontainer.com (Credit Cards Accepted) 5234145-1



**FARM & HOME SUPPLY** 1-888-643-3395 • 509-843-3395 www.fhsupply.com Pomeroy, WA  
2012 CASE IH Patriot 4430 sprayer, 100' booms w/20" spacing, Aim Command. \$149,999  
2008 Case IH 485 Quadtrac, 36" tracks. \$129,500  
2001 CASE IH 2388 Combine Hilco Leveler, 3,382 Sep. Hrs./Case IH 1010 Header 30ft/Cart. \$78,500  
2000 Case IH 2388 Combine Hilco Leveler, 4,492 sep. hrs./Case IH 1010 30' Header/ Cart. \$74,750  
1989 John Deere 8760 wheel tractor, 6 newer tires. \$25,500  
Cat D6D w/12' hydraulic blade. \$31,500  
New Great Plains 3000 Turbo Max/Harrow. \$CALL  
20 Great Plains FLEX HARROW 51' 16-bar HD. \$CALL  
NEW Schulte FX-530 30' Rotary Cutter. \$CALL  
NEW KIOTI PX1153 Tractor, Power Shuttle, cab & self-leveling loader, 115-hp. \$CALL



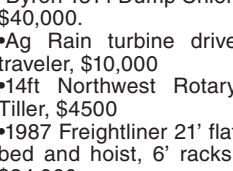
923 Farm Equipment



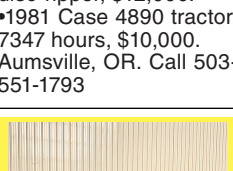
**1999 John Deere 7210 Engine.** Complete! Runs Great! 6000 hours. Contact for video of engine running!, \$5000 OBO. Mt. Vernon, WA. 360-770-6102



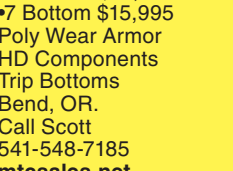
**Grain Cleaner For Sale.** NEW AG1650 Air Gravity grain cleaner, \$18,500. NEW AG440 Air Gravity Grain cleaner, \$9,500. www.bigfatseed.com Shonkin, MT. 406-430-4600



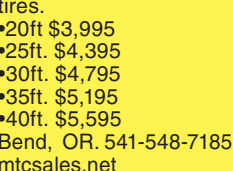
2009 946 disc mower with flail conditioner. Works very well, \$12,000 OBO Scio, OR. 541-619-8891



**PERC Pressurized Exhaust Rodent Controller.** Model 412. 300 hours, well maintained, \$7000. CLARK Hay Squeeze, \$8000. Yreka, CA. 530-436-2436



**Farmland Tractor Supply** Tangent, Oregon  
New, Used, and Rebuilt Tractor Parts  
877-928-1646 541-928-1646 32427 Old Hwy. 34 Tangent, OR 97389 5218025-1

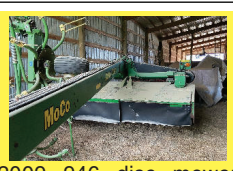


**NEW IA Header Trailers.** Adjustable Bunk Mounts, 8 hole wheels and radial tires. •20ft \$3,995 •25ft \$4,395 •30ft \$4,795 •35ft \$5,195 •40ft \$5,595 Bend, OR. 541-548-7185 mtcsales.net

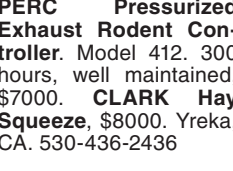
923 Farm Equipment



**Disc Ripper:** MC5109, Great Plains. Used on 100 acres. Like new, \$35,000 OBO. Sheridan, OR. 503-434-7692



**Brent CPC 7 shank disc ripper.** In great shape, \$13,000. Sheridan, OR. 503-434-7692



**PASTURES, FARMS, HEMP & NUTS**  
• Improve soil without spending more  
• Stimulates life in soil & supplies all the nutrients most fertilizers neglect  
• Allows plants to reach maximum genetic potential  
• GMO free, toxin free, no added chemicals  
• No Animal Byproducts  
ORDERS ARE BACKING UP!  
Bulk quantities available!  
208-602-2844 | www.DrJimZ.com 527728-1



**Ask about our Rental/Purchase/Consignment Program.** It includes 100 hrs of use per month. Free delivery to the Treasure Valley. This is a partial list. See our website for a complete list. www.ray-brothers.com

2014 JD R4030 Sprayer 100 ft. booms, 20" spacing, 2084 hrs. ....	\$129,000
2015 JD R4038 Sprayer 120' Boom, 20" Spacing, 1900 hrs	\$149,000
2017 JD 6110M 110 hp, 850 hrs. ....	\$75,000
2017 JD 6120R Ext. Warranty, 120 hp, 1122 hrs. ....	\$85,000
2017 JD 6145M 24 spd., loader ready, 4000 hrs. ....	\$75,000
2012 JD 7280R IVT, 320/90R54 Rear Duals, 5200 Hrs. ....	\$75,000
2017 JD 6195R Auto Track Ready, Ext. Warr., 4300 hrs. ....	\$94,000
2015 JD 8370R New Frnt. Tires, Rear 90%, 4400 hrs. ....	\$165,000
2017 JD 8245R MFWD, 245 hp, 1758 hrs. ....	\$159,000
2015 JD 8270R MFWD, 270 hp, 4651 hrs. ....	\$110,000
2018 JD 9470RT 470 hp, 5,003 hrs. ....	\$149,000
2016 JD 6155R Priced without duals, 3,800 hrs. ....	\$86,000

**Ray Brothers Equipment** (208) 880-6344 • Call or Text Chris Ironside, OR • Financing Available! Email for more info CHRISR@RAYBROTHERS.NET 5233993-1



**SUKRAW FARMS** (541) 891-8740 Klamath Falls, OR (541) 884-8740

Rock Trailer. ....	\$10,000
6 Bottom Watts Plow. ....	\$5,000
Convertible Aluminum Grain Trailer. ....	\$6,000
14 foot NW Rototiller. ....	\$13,000
3000 feet 12" ..... .....	\$6.50/ft
Strawmaster 7000 ..... .....	\$30,000
3000 feet 10" ..... .....	\$6.00/ft
Disc Checker Tower. ....	\$5,000
Farmhand F11 Front End Loader. ....	\$1,500
Gheen 10 Inch Pipe Press. ....	\$10,000
Summer 4350 ..... .....	\$35,000
20 foot Dandle Chopper. ....	\$3,500



**KIOTI** run ahead of the pack  
NEW KIOTI TRACTORS  
CS 2220 - 21 HP Tractor w/Loader, 3 Cyl. Diesel, HST, Mid & Rear PTO. .... SOLD  
CK 2610 CAB - 24.5 HP Tractor w/Loader, 3 Cyl. Diesel, HST, Rear PTO. .... SOLD  
RX6620P ROPS - 66hp, 4 Cyl. Turbo Diesel, 12x12 Power Shuttle Trans. .... Coming In



**FISCHER MILL SUPPLY, INC.** EST. 1889 503-631-3411 OREGON CITY, OR  
NEW KIOTI TRACTORS  
CS 2220 - 21 HP Tractor w/Loader, 3 Cyl. Diesel, HST, Mid & Rear PTO. .... SOLD  
CK 2610 CAB - 24.5 HP Tractor w/Loader, 3 Cyl. Diesel, HST, Rear PTO. .... SOLD  
RX6620P ROPS - 66hp, 4 Cyl. Turbo Diesel, 12x12 Power Shuttle Trans. .... Coming In

VISIT [FISCHERMILLSUPPLY.COM](http://FISCHERMILLSUPPLY.COM) TO SEE ALL INVENTORY

<b>USED TRACTORS</b>	Cat 239D Skid Steer, Tracks. ....	\$32,900	
Massey 1726E, 24hp, 4WD, Tractor/Loader. Coming In	Cat 247B-3 Skid Steer, Tracks. ....	\$30,900	
<b>USED HAY EQUIPMENT</b>	Erskine Utility Grapple 60" ..... .....	\$3,700	
Massey 1745 Round Baler. ....	Muratori MT20N Flail Mower, 61" ..... .....	CALL	
New Holland 455 Round Baler. ....	200gal. Skid Sprayer with Honda Engine. ....	\$2,850	
New Holland 1048S Bale Wagon. ....	Montana Air Blast Sprayer 110gal. ....	\$4,950	
New Holland BC5070 Square Baler. ....	Kuhn MDS10.1 Fertilizer Spreader. ....	\$4,950	
New Holland 489 Haybine. ....	Knight 725 Manure Spreader, Not on Site. ....	\$9,750	
Massey 1363 Disc Mower cond., 9'10" ..... .....	Aerway AW050S 3pt. Aerator, 60" ..... .....	\$2,950	
Kuhn GRS24 Tedder/Rake. ....	John Deere 110 Disk, 12'6" ..... .....	\$4,250	
<b>MISCELLANEOUS</b>	Case CX130 Excavator, Thumb, 2 Bkts. PENDING	Graham Chisel Plow 9'-shank. ....	\$3,750

**SEE OUR AD EVERY OTHER WEEK!** 5226472-1



**D&S Tires Inc.** 26884 Pearl Rd • Parma, Idaho 83660  
New Track Shop that brings BIG Savings to the Western U.S!  
(208) 635-0700  
We are your #1 Source for retreading and repairing rubber tracks for your ag tractor.