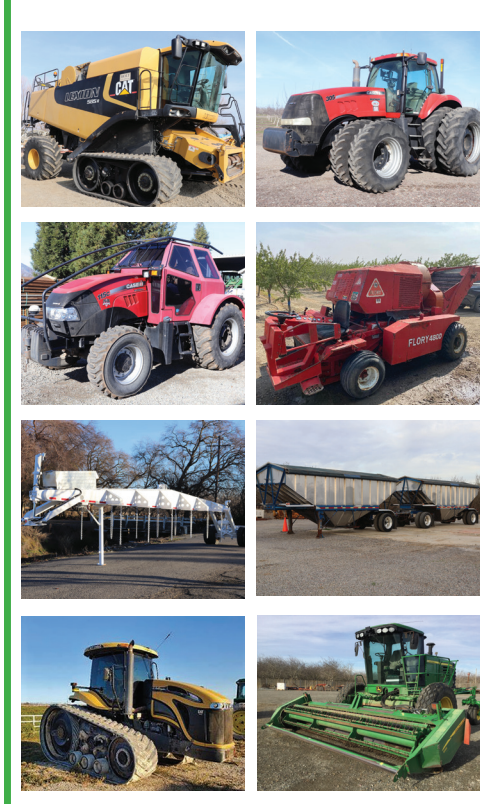


354 Auction Sales

## ONLINE AUCTION NORTHERN CALIFORNIA EQUIPMENT COLUSA, CA March 12th-16th 2021



**LEARN MORE AT:  
AUCTION-IS-ACTION.COM**

**PUTMAN AUCTIONEERS, INC.**  
CA BOND NO. 7238559  
EMAIL: putman.kevin@yahoo.com  
KEVIN PUTMAN JOHN PUTMAN  
(530) 566-5083 (530) 701-8596

**LIST YOUR CLASSIFIEDS TODAY.**  
**1-800-882-6789**  
FAX 503-364-2692 • CapitalPress.com

354 Auction Sales

### Capital Press Ag Weekly It works!

**It's a small world!**  
"A student in Vancouver, BC bought my Leyland 272 tractor to ship to his Dad in South Africa! His Dad already had one and wanted another, so he purchased the one I listed in Capital Press."  
Tony Windermere  
Nut Grove  
Chilliwack, BC

### Classified Advertising Works!

Place your ad today!  
**800-882-6789**  
CapitalPress.com

354 Auction Sales

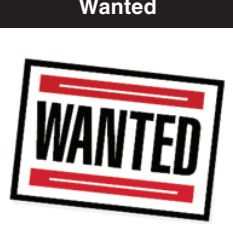


### Don't Miss This One!

**AUCTION!  
GUNS, AMMO & ACCESSORIES**  
Saturday, March 20, 2021  
80824 Kik Rd. Hermiston, OR. HWY 395 between Hermiston and Umatilla OR.  
Auction: 3PM  
Preview: 1PM  
Masks are required and there will be social distancing. Already consigned 100 pistols, guns, black power and ammo. Interested in consignment? Call Ford Bonney 541-561-5798 or Colby Alexander 541-314-3153.  
For photos and lists go to www.facebook.com/FordsAuction  
Text FORDSAUCTION to 844-957-2516 to subscribe to our newsletter.

**BEST SELLERS . . .**  
"...The phone rang off the hook."  
Vanvelhuizen Dairy • Turner, OR  
Call and list your BEST SELLER!  
**1-800-882-6789**

531 Real Estate Wanted



WANTED: Established Blueberry Farms. Purchase/ Lease/ Yearly Crop Purchase. 503-320-5980

**HOT! SAVINGS at Capital Press**  
1-800-882-6789  
CapitalPress.com

**540 Recreational Property**  
Wanted: Pasture for up to 200 head/ Cows. May to September. Long term lease preferred. Culver, OR. 541-480-9340

### PUBLISHER'S NOTICE

All real estate advertising in this newspaper is subject to the Fair Housing Act which makes it illegal to advertise "any preference, limitation or discrimination based on race, color, religion, sex, handicap, familial status or national origin, or any intention to make any such preference, limitation or discrimination." Familial status includes children under the age of 18 living with parents or legal custodians, pregnant women and people securing custody of children under 18.  
This newspaper will not knowingly accept any advertising for real estate which is in violation of the law. Our readers are hereby informed that all dwellings advertised in this newspaper are available on an equal opportunity basis. To complain of discrimination call HUD toll-free at 1-800-669-9777. The toll-free number for the hearing impaired is 1-800-927-9275.

**546 Rentals, Leases**  
PASTURE FOR RENT 60 TO 90 ACRES. Levee ground. Scappoose OR. \$6000 annually. Paid in Advance. 503-437-4833

**FOR LEASE**  
Vegetable Processing Facility and 2 Storage Buildings Hermiston Oregon. Processing Facility approximately 58,000 sq. ft. with office, lunch room, receiving area, packing room, two large cold rooms, shop/parts room, staging room, shipping/ loading dock for three (3) trucks, scales); 2 Storage Facilities (30,000 sq. ft. facility with dehumidification; 60,000 sq. ft. facility with computerized refrigeration and dehumidifiers), private railroad spurs for transportation, water rights (well), septic, electricity, water lagoon for waste water. Will possibly rent processing facility and storage facilities separately. Contact Larry Blunck at 503-656-1654 or larry@bluncklaw.com

**546 Rentals, Leases**  
PASTURE FOR RENT 60 TO 90 ACRES. Levee ground. Scappoose OR. \$6000 annually. Paid in Advance. 503-437-4833

**FOR LEASE**  
Vegetable Processing Facility and 2 Storage Buildings Hermiston Oregon. Processing Facility approximately 58,000 sq. ft. with office, lunch room, receiving area, packing room, two large cold rooms, shop/parts room, staging room, shipping/ loading dock for three (3) trucks, scales); 2 Storage Facilities (30,000 sq. ft. facility with dehumidification; 60,000 sq. ft. facility with computerized refrigeration and dehumidifiers), private railroad spurs for transportation, water rights (well), septic, electricity, water lagoon for waste water. Will possibly rent processing facility and storage facilities separately. Contact Larry Blunck at 503-656-1654 or larry@bluncklaw.com

**561 Ranches**  
Payette River Ranch - ID 1,103± acres with 900± irrigated. Ranch, farm, develop or use for tax credits via a conservation easement. \$13,500,000  
Winchester Ranch - ID 600± acres with 8 bedroom log home, log shop, cabin & 2 big barns. Pasture, farm land and timber with great hunting. \$2,999,000  
Selah Farm - WA 182± acres, 144± in alfalfa & under pivot. 2 homes, steel storage/arena, 2 pole buildings & barn. PACMLS 242447 \$2,350,000  
Snake River Farm - ID 138± acre farm has 110± irrigated. Home, detached garage, equip. storage, barn and silo. \$1,500,000

**561 Ranches**  
Payette River Ranch - ID 1,103± acres with 900± irrigated. Ranch, farm, develop or use for tax credits via a conservation easement. \$13,500,000  
Winchester Ranch - ID 600± acres with 8 bedroom log home, log shop, cabin & 2 big barns. Pasture, farm land and timber with great hunting. \$2,999,000  
Selah Farm - WA 182± acres, 144± in alfalfa & under pivot. 2 homes, steel storage/arena, 2 pole buildings & barn. PACMLS 242447 \$2,350,000  
Snake River Farm - ID 138± acre farm has 110± irrigated. Home, detached garage, equip. storage, barn and silo. \$1,500,000

**561 Ranches**  
Payette River Ranch - ID 1,103± acres with 900± irrigated. Ranch, farm, develop or use for tax credits via a conservation easement. \$13,500,000  
Winchester Ranch - ID 600± acres with 8 bedroom log home, log shop, cabin & 2 big barns. Pasture, farm land and timber with great hunting. \$2,999,000  
Selah Farm - WA 182± acres, 144± in alfalfa & under pivot. 2 homes, steel storage/arena, 2 pole buildings & barn. PACMLS 242447 \$2,350,000  
Snake River Farm - ID 138± acre farm has 110± irrigated. Home, detached garage, equip. storage, barn and silo. \$1,500,000

**561 Ranches**  
Payette River Ranch - ID 1,103± acres with 900± irrigated. Ranch, farm, develop or use for tax credits via a conservation easement. \$13,500,000  
Winchester Ranch - ID 600± acres with 8 bedroom log home, log shop, cabin & 2 big barns. Pasture, farm land and timber with great hunting. \$2,999,000  
Selah Farm - WA 182± acres, 144± in alfalfa & under pivot. 2 homes, steel storage/arena, 2 pole buildings & barn. PACMLS 242447 \$2,350,000  
Snake River Farm - ID 138± acre farm has 110± irrigated. Home, detached garage, equip. storage, barn and silo. \$1,500,000

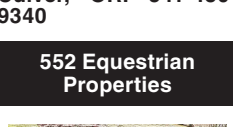
546 Rentals, Leases

For LEASE: 20,000 sqft shop building. 21,000 sqft food grade processing plant. Rail spur available. Greenhouse, 10,000 to 40,000sqft. Propagation rooms, surveillance system. Albany Oregon area. 503-871-9114

(2) 18,000sqft coolers for rent. 10 loading docks. Certified truck scale on site. Available 1/1/2021 - 9/1/2021.  
Contact Larry 503-784-8424. larryt@teufel.com  
Cornelius, OR.

**ATTENTION!**  
Wanted: Pasture for up to 200 head/ Cows. May to September. Long term lease preferred. Culver, OR. 541-480-9340

**552 Equestrian Properties**



Opportunity awaits on this large farm property zoned EFU. Rustic country home on 84 scenic horse oriented acres. Lots of trees, 10 stall horse barn, exercise area, corrals, live creek, tractor and equipment, 24ft. travel trailer, seasonal secluded duck pond. Dallas, Oregon, 10 miles from Salem, \$875,000  
eXp Realty, Debbie Butler 503-580-3211

**561 Ranches**  
PASTURE FOR RENT 60 TO 90 ACRES. Levee ground. Scappoose OR. \$6000 annually. Paid in Advance. 503-437-4833

**Ranch For Sale**  
430+ acres in Methow, WA. Irrigated and dryland fields, public land on 3 sides, grass air strip, ponds, a recreational wonderland. \$1,999,995. Call 509-923-2564 or email: bevhrm@gmail.com

**561 Ranches**  
PASTURE FOR RENT 60 TO 90 ACRES. Levee ground. Scappoose OR. \$6000 annually. Paid in Advance. 503-437-4833

**561 Ranches**  
PASTURE FOR RENT 60 TO 90 ACRES. Levee ground. Scappoose OR. \$6000 annually. Paid in Advance. 503-437-4833

**561 Ranches**  
PASTURE FOR RENT 60 TO 90 ACRES. Levee ground. Scappoose OR. \$6000 annually. Paid in Advance. 503-437-4833

**561 Ranches**  
PASTURE FOR RENT 60 TO 90 ACRES. Levee ground. Scappoose OR. \$6000 annually. Paid in Advance. 503-437-4833

**561 Ranches**  
PASTURE FOR RENT 60 TO 90 ACRES. Levee ground. Scappoose OR. \$6000 annually. Paid in Advance. 503-437-4833

**561 Ranches**  
PASTURE FOR RENT 60 TO 90 ACRES. Levee ground. Scappoose OR. \$6000 annually. Paid in Advance. 503-437-4833

**561 Ranches**  
PASTURE FOR RENT 60 TO 90 ACRES. Levee ground. Scappoose OR. \$6000 annually. Paid in Advance. 503-437-4833

**561 Ranches**  
PASTURE FOR RENT 60 TO 90 ACRES. Levee ground. Scappoose OR. \$6000 annually. Paid in Advance. 503-437-4833

**561 Ranches**  
PASTURE FOR RENT 60 TO 90 ACRES. Levee ground. Scappoose OR. \$6000 annually. Paid in Advance. 503-437-4833

**561 Ranches**  
PASTURE FOR RENT 60 TO 90 ACRES. Levee ground. Scappoose OR. \$6000 annually. Paid in Advance. 503-437-4833

**561 Ranches**  
PASTURE FOR RENT 60 TO 90 ACRES. Levee ground. Scappoose OR. \$6000 annually. Paid in Advance. 503-437-4833

**561 Ranches**  
PASTURE FOR RENT 60 TO 90 ACRES. Levee ground. Scappoose OR. \$6000 annually. Paid in Advance. 503-437-4833

**561 Ranches**  
PASTURE FOR RENT 60 TO 90 ACRES. Levee ground. Scappoose OR. \$6000 annually. Paid in Advance. 503-437-4833

**561 Ranches**  
PASTURE FOR RENT 60 TO 90 ACRES. Levee ground. Scappoose OR. \$6000 annually. Paid in Advance. 503-437-4833

**561 Ranches**  
PASTURE FOR RENT 60 TO 90 ACRES. Levee ground. Scappoose OR. \$6000 annually. Paid in Advance. 503-437-4833

**561 Ranches**  
PASTURE FOR RENT 60 TO 90 ACRES. Levee ground. Scappoose OR. \$6000 annually. Paid in Advance. 503-437-4833

**561 Ranches**  
PASTURE FOR RENT 60 TO 90 ACRES. Levee ground. Scappoose OR. \$6000 annually. Paid in Advance. 503-437-4833

**561 Ranches**  
PASTURE FOR RENT 60 TO 90 ACRES. Levee ground. Scappoose OR. \$6000 annually. Paid in Advance. 503-437-4833

**561 Ranches**  
PASTURE FOR RENT 60 TO 90 ACRES. Levee ground. Scappoose OR. \$6000 annually. Paid in Advance. 503-437-4833

**561 Ranches**  
PASTURE FOR RENT 60 TO 90 ACRES. Levee ground. Scappoose OR. \$6000 annually. Paid in Advance. 503-437-4833

**561 Ranches**  
PASTURE FOR RENT 60 TO 90 ACRES. Levee ground. Scappoose OR. \$6000 annually. Paid in Advance. 503-437-4833

**561 Ranches**  
PASTURE FOR RENT 60 TO 90 ACRES. Levee ground. Scappoose OR. \$6000 annually. Paid in Advance. 503-437-4833

**561 Ranches**  
PASTURE FOR RENT 60 TO 90 ACRES. Levee ground. Scappoose OR. \$6000 annually. Paid in Advance. 503-437-4833

561 Ranches

472±/- ACRES TOTAL Modoc County, CA. 296±/- acre flood irrigated meadow hay ranch with 1st water right, 2 homes, barns, shop, cattle facilities, and separate 176±/- acres fenced spring grazing ground with ponds & well. All for \$1,695,000. Call 530-250-7122 for details.

### Income-Producing RANCH

**LOWER CLEARWATER CANYON RANCH**  
Approximately 685 acres canyon range land above Clearwater and Pottlatch Rivers, east of Lewiston, Idaho via Cherry Lane Bridge. Good fall and spring cattle pasture. Stock water improvements. Home site with well and outbuildings; newer pole building, big old barn, good machine shed, shop with living quarters. Access by county road. Two cell towers provide significant monthly income. Whitetail, Mule Deer, Game Birds. Asking \$875,000. Send inquiries to: odieproperties@gmail.com

**564 Farms**  
26245 Horsell Rd. Bend OR. \$2,225,000  
156 Acres, 122.5 irrigated under 4 pivots. 1/2 in Orchard grass & 1/2 in Alfalfa. 2014 built 2879 sqft 4 bedroom, 2 bath home with awesome Cascade views.  
Scott McLean Realty Executives CO. 541-408-6908

**564 Farms**  
26245 Horsell Rd. Bend OR. \$2,225,000  
156 Acres, 122.5 irrigated under 4 pivots. 1/2 in Orchard grass & 1/2 in Alfalfa. 2014 built 2879 sqft 4 bedroom, 2 bath home with awesome Cascade views.  
Scott McLean Realty Executives CO. 541-408-6908

**564 Farms**  
26245 Horsell Rd. Bend OR. \$2,225,000  
156 Acres, 122.5 irrigated under 4 pivots. 1/2 in Orchard grass & 1/2 in Alfalfa. 2014 built 2879 sqft 4 bedroom, 2 bath home with awesome Cascade views.  
Scott McLean Realty Executives CO. 541-408-6908

**564 Farms**  
26245 Horsell Rd. Bend OR. \$2,225,000  
156 Acres, 122.5 irrigated under 4 pivots. 1/2 in Orchard grass & 1/2 in Alfalfa. 2014 built 2879 sqft 4 bedroom, 2 bath home with awesome Cascade views.  
Scott McLean Realty Executives CO. 541-408-6908

**564 Farms**  
26245 Horsell Rd. Bend OR. \$2,225,000  
156 Acres, 122.5 irrigated under 4 pivots. 1/2 in Orchard grass & 1/2 in Alfalfa. 2014 built 2879 sqft 4 bedroom, 2 bath home with awesome Cascade views.  
Scott McLean Realty Executives CO. 541-408-6908

**564 Farms**  
26245 Horsell Rd. Bend OR. \$2,225,000  
156 Acres, 122.5 irrigated under 4 pivots. 1/2 in Orchard grass & 1/2 in Alfalfa. 2014 built 2879 sqft 4 bedroom, 2 bath home with awesome Cascade views.  
Scott McLean Realty Executives CO. 541-408-6908

**564 Farms**  
26245 Horsell Rd. Bend OR. \$2,225,000  
156 Acres, 122.5 irrigated under 4 pivots. 1/2 in Orchard grass & 1/2 in Alfalfa. 2014 built 2879 sqft 4 bedroom, 2 bath home with awesome Cascade views.  
Scott McLean Realty Executives CO. 541-408-6908

**564 Farms**  
26245 Horsell Rd. Bend OR. \$2,225,000  
156 Acres, 122.5 irrigated under 4 pivots. 1/2 in Orchard grass & 1/2 in Alfalfa. 2014 built 2879 sqft 4 bedroom, 2 bath home with awesome Cascade views.  
Scott McLean Realty Executives CO. 541-408-6908

**564 Farms**  
26245 Horsell Rd. Bend OR. \$2,225,000  
156 Acres, 122.5 irrigated under 4 pivots. 1/2 in Orchard grass & 1/2 in Alfalfa. 2014 built 2879 sqft 4 bedroom, 2 bath home with awesome Cascade views.  
Scott McLean Realty Executives CO. 541-408-6908

**564 Farms**  
26245 Horsell Rd. Bend OR. \$2,225,000  
156 Acres, 122.5 irrigated under 4 pivots. 1/2 in Orchard grass & 1/2 in Alfalfa. 2014 built 2879 sqft 4 bedroom, 2 bath home with awesome Cascade views.  
Scott McLean Realty Executives CO. 541-408-6908

**564 Farms**  
26245 Horsell Rd. Bend OR. \$2,225,000  
156 Acres, 122.5 irrigated under 4 pivots. 1/2 in Orchard grass & 1/2 in Alfalfa. 2014 built 2879 sqft 4 bedroom, 2 bath home with awesome Cascade views.  
Scott McLean Realty Executives CO. 541-408-6908

**564 Farms**  
26245 Horsell Rd. Bend OR. \$2,225,000  
156 Acres, 122.5 irrigated under 4 pivots. 1/2 in Orchard grass & 1/2 in Alfalfa. 2014 built 2879 sqft 4 bedroom, 2 bath home with awesome Cascade views.  
Scott McLean Realty Executives CO. 541-408-6908

**564 Farms**  
26245 Horsell Rd. Bend OR. \$2,225,000  
156 Acres, 122.5 irrigated under 4 pivots. 1/2 in Orchard grass & 1/2 in Alfalfa. 2014 built 2879 sqft 4 bedroom, 2 bath home with awesome Cascade views.  
Scott McLean Realty Executives CO. 541-408-6908

**564 Farms**  
26245 Horsell Rd. Bend OR. \$2,225,000  
156 Acres, 122.5 irrigated under 4 pivots. 1/2 in Orchard grass & 1/2 in Alfalfa. 2014 built 2879 sqft 4 bedroom, 2 bath home with awesome Cascade views.  
Scott McLean Realty Executives CO. 541-408-6908

**564 Farms**  
26245 Horsell Rd. Bend OR. \$2,225,000  
156 Acres, 122.5 irrigated under 4 pivots. 1/2 in Orchard grass & 1/2 in Alfalfa. 2014 built 2879 sqft 4 bedroom, 2 bath home with awesome Cascade views.  
Scott McLean Realty Executives CO. 541-408-6908

**564 Farms**  
26245 Horsell Rd. Bend OR. \$2,225,000  
156 Acres, 122.5 irrigated under 4 pivots. 1/2 in Orchard grass & 1/2 in Alfalfa. 2014 built 2879 sqft 4 bedroom, 2 bath home with awesome Cascade views.  
Scott McLean Realty Executives CO. 541-408-6908

**564 Farms**  
26245 Horsell Rd. Bend OR. \$2,225,000  
156 Acres, 122.5 irrigated under 4 pivots. 1/2 in Orchard grass & 1/2 in Alfalfa. 2014 built 2879 sqft 4 bedroom, 2 bath home with awesome Cascade views.  
Scott McLean Realty Executives CO. 541-408-6908

**564 Farms**  
26245 Horsell Rd. Bend OR. \$2,225,000  
156 Acres, 122.5 irrigated under 4 pivots. 1/2 in Orchard grass & 1/2 in Alfalfa. 2014 built 2879 sqft 4 bedroom, 2 bath home with awesome Cascade views.  
Scott McLean Realty Executives CO. 541-408-6908

**564 Farms**  
26245 Horsell Rd. Bend OR. \$2,225,000  
156 Acres, 122.5 irrigated under 4 pivots. 1/2 in Orchard grass & 1/2 in Alfalfa. 2014 built 2879 sqft 4 bedroom, 2 bath home with awesome Cascade views.  
Scott McLean Realty Executives CO. 541-408-6908

**564 Farms**  
26245 Horsell Rd. Bend OR. \$2,225,000  
156 Acres, 122.5 irrigated under 4 pivots. 1/2 in Orchard grass & 1/2 in Alfalfa. 2014 built 2879 sqft 4 bedroom, 2 bath home with awesome Cascade views.  
Scott McLean Realty Executives CO. 541-408-6908

**564 Farms**  
26245 Horsell Rd. Bend OR. \$2,225,000  
156 Acres, 122.5 irrigated under 4 pivots. 1/2 in Orchard grass & 1/2 in Alfalfa. 2014 built 2879 sqft 4 bedroom, 2 bath home with awesome Cascade views.  
Scott McLean Realty Executives CO. 541-408-6908

**564 Farms**  
26245 Horsell Rd. Bend OR. \$2,225,000  
156 Acres, 122.5 irrigated under 4 pivots. 1/2 in Orchard grass & 1/2 in Alfalfa. 2014 built 2879 sqft 4 bedroom, 2 bath home with awesome Cascade views.  
Scott McLean Realty Executives CO. 541-408-6908

**564 Farms**  
26245 Horsell Rd. Bend OR. \$2,225,000  
156 Acres, 122.5 irrigated under 4 pivots. 1/2 in Orchard grass & 1/2 in Alfalfa. 2014 built 2879 sqft 4 bedroom, 2 bath home with awesome Cascade views.  
Scott McLean Realty Executives CO. 541-408-6908

**564 Farms**  
26245 Horsell Rd. Bend OR. \$2,225,000  
156 Acres, 122.5 irrigated under 4 pivots. 1/2 in Orchard grass & 1/2 in Alfalfa. 2014 built 2879 sqft 4 bedroom, 2 bath home with awesome Cascade views.  
Scott McLean Realty Executives CO. 541-408-6908

**564 Farms**  
26245 Horsell Rd. Bend OR. \$2,225,000  
156 Acres, 122.5 irrigated under 4 pivots. 1/2 in Orchard grass & 1/2 in Alfalfa. 2014 built 2879 sqft 4 bedroom, 2 bath home with awesome Cascade views.  
Scott McLean Realty Executives CO. 541-408-6908

**564 Farms**  
26245 Horsell Rd. Bend OR. \$2,225,000  
156 Acres, 122.5 irrigated under 4 pivots. 1/2 in Orchard grass & 1/2 in Alfalfa. 2014 built 2879 sqft 4 bedroom, 2 bath home with awesome Cascade views.  
Scott McLean Realty Executives CO. 541-408-6908

**564 Farms**  
26245 Horsell Rd. Bend OR. \$2,225,000  
156 Acres, 122.5 irrigated under 4 pivots. 1/2 in Orchard grass & 1/2 in Alfalfa. 2014 built 2879 sqft 4 bedroom, 2 bath home with awesome Cascade views.  
Scott McLean Realty Executives CO. 541-408-6908

**564 Farms**  
26245 Horsell Rd. Bend OR. \$2,225,000  
156 Acres, 122.5 irrigated under 4 pivots. 1/2 in Orchard grass & 1/2 in Alfalfa. 2014 built 2879 sqft 4 bedroom, 2 bath home with awesome Cascade views.  
Scott McLean Realty Executives CO. 541-408-6908

651 Help Wanted



**PAPE** PAPÉ KENWORTH  
Pape Kenworth is currently hiring technicians. Please visit one of our locations or apply online. Locations include Portland, Kelso, Donald, Tangent and Redmond. Please contact: Redmond, OR. 541-516-3142

**Farm Mechanic Wanted**  
Job starts with a very competitive wage along with opportunity for growth within the company. Located in Jefferson Oregon. 503-871-6340

**Seasonal Farm Labor**  
Opportunity to work full time. Job duties include equipment operator, spot spraying, and irrigation. Jefferson, OR. 503-871-6340

**Hostetler Farm Tiling LLC**  
in Aurora, OR. is hiring an experienced **Operator, CDL A Licensed Driver** to join our farm drainage crew. Job offers a unique opportunity to play a key role in a high performance team. Operate heavy machinery while working outside on local farms. See immediate results of your hard work. Weekly changing job sites, home daily, 40 hour work week, Monday to Friday. Qualified candidates have a CDL A license and experience hauling construction or farm equipment. Must have physical competency to safely and efficiently operate excavators dozers and tractors and do shovel work, and drainage pipe fittings. Benefits health dental 401k PTO Bonus. \$20-\$30 hour. DOE. Email: brethostetler@comcast.net

**Raw Materials Manager**  
Location: Eugene, Oregon. Starting wage: \$35/hour. DOE  
Please apply at: https://mountainroseherbs.com/current-employment-opportunities/

**Raw Materials Manager**  
Location: Eugene, Oregon. Starting wage: \$35/hour. DOE  
Please apply at: https://mountainroseherbs.com/current-employment-opportunities/

**Raw Materials Manager**  
Location: Eugene, Oregon. Starting wage: \$35/hour. DOE  
Please apply at: https://mountainroseherbs.com/current-employment-opportunities/

**Raw Materials Manager**  
Location: Eugene, Oregon. Starting wage: \$35/hour. DOE  
Please apply at: https://mountainroseherbs.com/current-employment