

899 Heavy & Indust. Eq.

International TD9 motor, International T9 motor. Two winches for TD9 or T9. Complete parts for TD9, T9, Umpqua, OR. 541-459-3248

REPLACEMENT DECAL SETS

Construction, Forestry & Ag Equipment. Fast, Knowledgeable, Reliable Service. 215-536-5339 email: info@CustomServicesCompany.com
Thousands of sets, Old & New, in our digital inventory. www.QuipCal.com

Hancock Paddle Scraper: 8 yard. Excellent condition, \$8,000. Harper, OR. 541-666-9627

CASE 580L Backhoe: 5,600 hours, new front tires, 70% rear. 4-in-1 bucket, e-hoe, 4x4, \$25,000. Nipomo, CA. 805-929-4974

Jaw Crusher Plant 32x42. With a 32" x42" apron feeder. Both are portable with heavy duty hydraulic legs. Good tires, \$150,000. Oregon. 541-954-4808

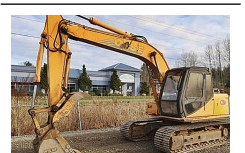
Truck Scale, Used, full length concrete deck, legal for trade scale. Canby, OR. 503-803-1926

BEST SELLERS "...Had great results and will definitely use Capital Press again."
Len St. Claire, Horseshoe Loop, Lebanon, OR
Call 1-800-882-6789 to advertise.

899 Heavy & Indust. Eq.

WANTED: Boom Lift, towable. John 541-892-1948

2005 JCB 214E Backhoe: extend-a-hoe, 4x4, cab, recent hydraulic pump, \$25,500. Clayton, WA. Micah 509-309-6158



1996 Case 9010B Excavator, PSM Hydraulic Thumb, 82" Stick, 106HP. Asking \$29,500. Sandy, OR. Call Pepe: 503-544-3232; Call Pat: 503-407-9062

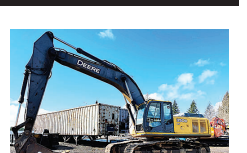
RETIRING

Pile Driver: Fits 350, 450, 550 John Deere sized dozers, good condition, 13ft leads, 1100lb hammer, \$2500 OBO. **John Deere backhoe** bucket, 36in wide, \$300 OBO. **LB 4 slope laser** level. Like new condition, \$1500 OBO. Langley, WA. 360-321-1624



EX200LC Hitachi Excavator with thumb, 3 buckets, 4000 hours, \$70,000. Brookings, OR. 541-661-0008

899 Heavy & Indust. Eq.



John Deere 350D LC Excavator: Hendrix Pin Grabber, 3ft Bucket, Asking \$39,950. Sandy, OR. Call Pepe: 503-544-3232; Call Pat: 503-407-9062



1994 John Deere 772BH. 9633 hours, 14ft blade. Front scarifier, 3 shanks, all wheel drive, nice, \$36,000. Gaston, OR. 503-789-3726

CASE INDUSTRIAL PARTS

We sell genuine, after market, and used CASE parts at discount prices nationwide. Call For Free Catalog. **CENTRAL EQUIPMENT** AFTER MARKET & USED PARTS. Medford, OR (888) 593-8749

902 Farm Equip. Parts

Bale Wagon Parts: Roll racks, side racks, front and rear axles, 542, 435 transmissions. 1048, 1065, 1075. Nipomo, CA. 805-929-4974

Parting out 2003 John Deere 9420: rear axle, engine, tires and weights already gone. Front axle, power shift transmission, cab, hood, plastics, fuel tank and many other parts still available. Glenn, CA. (530)363-2822

905 Antique Farm Eq. & Parts



1938 John Deere Model B, spoke wheels, good rubber. Salem, OR. 503-393-1347

Wanted: Oliver 1550 Tractor Parts. Complete PTO unit. Yamhill, OR. 503-662-3701 or 503-437-5048

907 Nursery Equip. & Supplies

FRESH SAWDUST: Consistently fair pricing. 9 Unit Loads Now Available Forest-Grove, OR. For pricing call 503-849-0216

USED NURSERY CONTAINERS:

Used, but reusable nursery containers. All sizes. Inventory changes daily. Call for current availability and prices. Sawyer Farms, Scio OR. 503-769-3417, juddsfarm@wvi.com (also wanted: used containers)

911 Hay Equip.



2020 Massey Ferguson WR9980 rotary swathers. Four units available with hours between 435-551, \$137,500 each. Farmington, NM. Please call 505-326-0145 with questions.

911 Hay Equip.

#1 Balewagons: Buy, Sell, New Holland 283 wide self-propelled, pull-type models, parts, tires, manuals. Caldwell, ID. 208-880-2889 www.balewagon.com

Newer New Holland 580 Baler: \$12,750. Culver, OR. 541-546-2865

New Holland 1048 Bale wagon. Runs great. Very low hours, \$13,500. St. Paul, OR. 503-349-5853

Bale Wagon Parts: Roll racks, side racks, front and rear axles, 542, 435 transmissions. 1048, 1065, 1075. Nipomo, CA. 805-929-4974

H & H 3 tie Hay Press. Complete with new frame. Power unit, D stacker, wrappers, Extended list available. Salem, OR. 503-910-4010

(3) New Holland Twine Balers. (2) 585 Balers with 15x22 shim kits. (1) BB900 with 15x22 shim kit. All in good condition. Buy one or all 3 for package deal. **New Holland 1499 Swather**, 12ft roller bar reel and conditioner. Good shape. Parts machine and extra parts can be included. **Deutz 4 cylinder motor** off New Holland 585 baler. Complete with clutch, pulley and wiring harness. 1230 hours. Runs strong. Malin, OR. 541-891-7448

911 Hay Equip.



For Sale: 2004 Oregon Roadrunner Hay Squeezer. Recent overhaul. New Paint. \$180,000. Mess, WA. 509-539-3683

New Holland 5070 baler with approximately 6000 bales. Hydraulic pickup, swing tongue and tension. Like new very clean, \$22,000. Moxee, WA. 509-728-3082

Twin Star G-3 rakes with gauge wheels front; back. Extra twine kit, \$30,000. Moxee, WA. 509-728-3082

New Holland 8080 Disc Mower: 416 head; steel rollers, 2300 hours. Very Clean, \$60,000. Moxee, WA. 509-728-3082



New Holland HW-340 self propelled rotary, 2800+ hours, 15" wide. Header updated, \$37,750. Call for details. Sisters, OR. 541-771-4970



Pottinger 4.54T Tedder. Bought it but never used. Shredded, \$10,800. Raymond, WA. 360-942-3748

911 Hay Equip.

2017 Krone Swadro 38T Rotary Rake. 540 PTO. Nice rake, \$33,500 OBO. Yamhill, OR. 503-537-4821

1995 New Holland 590 3X3 baler for salvage. Bad main gear box otherwise complete, \$4500. OBO. Yamhill, OR. 503-537-4821

Large Supply of Rebuilt New Holland Bale Wagons: Also buying New Holland bale wagons. Sod Busters Sales, Polson, MT. 406-883-2118

New And Used Parts: for all models New Holland bale wagons. **Largest Inventory in North America.** Sod Busters Sales, Polson, MT. 877-735-2108 or 406-883-2118

Freeman 370 Baler: Like new, only baled 27,000 bales, recent \$7,600 overhaul, new paint, hydro. \$20,000 OBO. Junction City, OR. 541-998-2429

Retiring BIG BALERS:

(4) **KRONE** 1290 Big Packs- Serial #KBP12773090, 56000 bales, \$25,000. **HDP HS-** Serial #BP22933934, 9000 bales, \$95,000. **HDP HS-** Serial #KBP12885108, 25054 bales, \$60,000. **HDP HS-** Serial #KBP12874921, 27284 bales, \$50,000.

JOHN DEERE WINDROWERS/WATERS:

4990- 995 16ft head with all Hay tools conversions equal to 500R head, 6411 tractor hours, low hour header, \$28,000. 4990- 995 16ft head with all Hay tools conversions equal to 500R head, 4332 tractor hours, low hour header, \$32,000.

HAY RAKES:

(3) **Twinstar 2030-** Rakes double frame, \$13,000. (3) **Harrell 8827:** 12' Twinstar baskets, \$10,000. 12' Baskets, new teeth, extended frame, \$4,000.

10.5' **Twinstar** baskets, extended frame, \$4,000. Connell, WA. Call/ text 509-282-2355

John Deere 945 Flail Conditioner Mower : all new rock guards, work horse, good condition, \$8750 OBO. Scio OR. 503-507-0359

RCO Baits

Gophers • Squirrels Voles • Moles
Dealer Locator
1-800-214-2248
Harrisburg, OR 5219712-1

New Holland

16 HS Header

Very Good Condition, Rubber Rollers, & Extra Parts. 509-257-2413 Sprague, WA 5230784-1

We deliver your message to the West's ag audience, wherever they are.

- Newspaper
- E-Editions
- Mobile
- Websites
- Flyers
- Custom Publications

Call today and see how we can help your business grow.

800-882-6789
CapitalPress.com

Nyssa Tractor & Implement

Our yard has 5 miles of road, the rest is farm machinery & parts.

www.nyssatractor.com
Toll Free (833) 372-4020
Nyssa, OR

BIG TRACTOR PARTS, INC.
~ GEARED FOR THE FUTURE ~

STEIGER TRACTOR SPECIALIST

- 1. We are your source for new & used Steiger drivetrain parts Series 1-9300 Series.
- 2. We rebuild Spicer manual transmissions, Fugi power shift transmissions, dropboxes & axle with ONE YEAR WARRANTY!
- 3. We now rebuild computer control boxes for Steiger tractors 1982-1999.

800-982-1769
www.bigtractorparts.com

Spring PARTS Sale

OIL FILTER KIT
Massey GC1723E thru MF1760M

KITS INCLUDE:
• Chevron Delo Engine Oil
• Oil Filters
\$32-\$48

LIMITED TIME OFFER

HESSTON AGCO PARTS MASSEY FERGUSON

FISCHER MILL SUPPLY, INC.
EST. 1889
(503) 631-3411
www.fischermillsupply.com

A picture is worth a 1,000 words

Add a full color photo to your print and online ads today by calling **800-882-6789**

Capital Press
CapitalPress.com

RETIRING

HAY EQUIPMENT FOR SALE: **Deutz Tedder**, 4x4 Squeeze/ Dozer Combo. **Rollover plow, Discs, Land Plane, Small Ripper, Packer.** Single side DARR Rake. Klamath Falls, OR. John 541-892-1948

907 Nursery Equip. & Supplies

907 Nursery Equip. & Supplies

907 Nursery Equip. & Supplies

GK MACHINE INC

FUEL TANKS—UL 142
WITH SECONDARY CONTAINMENT

- ◆ Turn-key above ground, all steel storage tanks, 250 up to 18,000 gallons
- ◆ Primer coat, urethane top coat and sand-blasted
- ◆ Quality fuel storage tanks or split tanks for diesel, gasoline, bio-diesel, oil or ethanol

GK MACHINE INC — Donald Oregon
www.gkmachine.com 503-678-5525

917 Orchard/Vineyard Equip. **917 Orchard/Vineyard Equip.** **917 Orchard/Vineyard Equip.** **917 Orchard/Vineyard Equip.**

GK MACHINE INC

Nut Harvesting Equipment
Combining Technology & Tradition Since 1976

Complete nut equipment line designed for the rugged terrain of the Pacific NW

ORCHARD LEVELER

NUT HARVESTER

NUT BIN

NUT CART

PRUNING TOWER

Most items in-stock!

GK MACHINE INC

GK SPREAD-PRO

The new GK Spread-Pro ATV/UTV spreader easily spreads baits, seeds, trace elements and all kinds of fertilizer.

Only \$4,299!

KEY FEATURES

- Stainless steel hopper
- Powder coat frame finish
- 30+ ft. spreading width
- 700+ lbs. capacity hopper

OPTIONS

- Tarp Cover
- Tire/Wheel Options
- Stainless steel frame
- Various controllers available

GK MACHINE, INC. - DONALD OREGON
www.GKMachine.com 503-678-5525

GK MACHINE, INC. DONALD OREGON
www.gkmachine.com 877-678-5525 Local 503-678-5525