

Classifieds



OMISSION & ERROR: Capital Press will exercise due care to prevent omissions and mistakes, but its total liability for any error, in any advertisement published, shall not exceed the proportionate space in which the error occurred. Credit, when allowable, will apply to the first insertion only.

Our Sales Team is Here to Serve You!



Greg Hains

West Washington, Portland (Eastside to the Columbia Gorge), and outside the Pacific NW
503-949-9881
ghains@capitalpress.com



Terra Richter

NE Oregon, East Washington & North Idaho
541-975-4593
trichter@capitalpress.com



Pat McKenzie

South Willamette Valley, South Oregon, Central Oregon, & California
541-521-9008
pmckenzie@capitalpress.com



Anne Long

NW Oregon & North Willamette Valley
503-871-7957
along@capitalpress.com



JoAnn Vanderwey

South Idaho, NE Nevada, & SE Oregon
208-880-4334
jvanderwey@capitalpress.com

800-882-6789 | View all classified ads for free at CapitalPress.com

Classified Index

Acreage.....	579	Farm, Yard, Estate Sales.....	351	Potato/Sugar Beet Equip.....	914
Alpacas & Llamas.....	743	Farms.....	564	Poultry & Fowl.....	722
Antique Farm Eq. & Parts.....	905	Feed, Grain.....	719	Public Notices.....	107
Antique/Classic Vehicles.....	201	Fencing.....	802	Rabbits.....	725
Antiques & Collectibles.....	813	Fertilizer & Soil Amendments.....	825	Ranches.....	561
Arts & Crafts.....	816	Fish.....	721	Ranchettes.....	558
ATVs/Motorcycles.....	219	Forklifts.....	896	Real Estate Auctions.....	534
Auction Sales.....	354	Fuel, Heating & Firewood.....	807	Real Estate Wanted.....	531
Automobiles.....	204	Garden, Turf, Yard Equip.....	908	Recreational Property.....	540
Bees.....	823	Generators.....	878	Refrigeration Equipment.....	863
Bison.....	761	Goats.....	746	Rentals, Leases.....	546
Boat Trailers.....	260	Hay Equip.....	911	Residential Property.....	549
Boat/RV Storage.....	269	Hay, Straw, Forage.....	716	Rock, Sand & Gravel.....	803
Boating Parts/Accessories.....	254	Heavy & Indust. Eq.....	899	RV Parts & Accessories.....	307
Boats for Sale.....	251	Help Wanted.....	651	RVs & Travel Trailers.....	301
Boats Wanted.....	257	Hemp.....	835	Sawmill Equip.....	894
Building Materials.....	804	Horses, Mules, Donkeys.....	731	Seed.....	824
Business-Sales Opportunities.....	643	Irrigation Equip.....	887	Services.....	664
Business for Sale.....	644	Lab Testing Services.....	665	Shop.....	740
Campers & Canopies.....	310	Land.....	576	Shop Equip. & Tools.....	881
Cattle - Beef.....	758	Legal Notices.....	101	Sporting Goods/Hunting.....	819
Cattle - Dairy.....	755	Livestock Equip. & Supplies.....	869	SUVs.....	207
Christmas Trees.....	821	Loans & Financing.....	667	Swine.....	749
Coast Property.....	543	Logging Equip.....	893	Tanks & Storage.....	875
Commercial Property.....	525	Mini Ranchettes.....	555	Timber Property.....	573
Condos for Sale.....	510	Misc for Sale.....	828	Timber/Lumber.....	801
Crop Protection Products.....	827	Mixed Livestock Sales.....	752	Tires & Wheels.....	228
Dairy Eq. & Supplies.....	872	Mobile & Mfd. Home.....	537	Tractors.....	920
Dairy Farms.....	567	Nursery Equipment & Supplies.....	907	Trailers Misc.....	316
Dogs, Cats, Pets.....	728	Nursery Stock Plants.....	822	Trailers, Horse & Stock.....	319
Draft Horses & Equip.....	734	Obituaries.....	91	Truck/Auto Parts & Accessories.....	222
Emu, Ostrich, Rhea.....	744	Orchard & Vineyard Property.....	570	Trucks.....	210
Equestrian Property.....	552	Orchard/Vineyard Equip.....	917	Utility Trailers.....	313
Exotic Animals.....	737	Organic.....	826	Vacation Homes for Sale.....	513
Farm Buildings.....	805	Packing/Processing Eq.....	890	Vans.....	216
Farm Equip Parts.....	902	Pasture.....	582	Well-Drilling Equip.....	884
Farm Equipment.....	923	Pickups.....	211	Work Wanted.....	652

1-800-882-6789 | CapitalPress.com

201 Antique/Classic Vehicles



1932 Sterling Howe Fire truck. One of a kind. Runs, original motor and equipment. Needs some TLC. Local favorite in Idaho parades, \$15,000. Wellton, AZ. 928-785-4786

210 Trucks



2012 ProStar Plus tandem axle semi tractor. 240,000 ACTUAL MILES. MaxForce 13 Diesel. 450HP. 10 Speed Eaton. PS, AC, CC, PW. PM. Jake brake. Traction control. Well maintained lease return that is very clean and work ready, \$19,900. Located in Twin Falls ID. Call 208-613-0050

210 Trucks



1997 IHC 2564 Water Truck. 2500 gallon, 2 heads; front and rear. Cummins M-11, 370HP. 13 speed. PS, AC, Side-locks. 64,750 GVW. Good 22.5 Radials. One owner former State vehicle that has been well maintained and is work ready, \$16,900. Located in Twin Falls ID. Call 208-613-0050

210 Trucks



2001 IHC 2574 tandem axle cab and chassis. N-14 Cummins, 13 speed. 112,000 ACTUAL MILES. Jake, PS, AC, PS. Traction lock. 164" cab to trunnion. Double frame full length. Hendrickson spring rears. 64,000 GVW. Near new 22.5 Radial tires. Former California DOT truck that has had excellent maintenance. Runs, drives and operates like new. NO RUST! \$29,000. Located in Twin Falls ID. Call 208-613-0050

210 Trucks



1992 Model 378 Dump Truck with 2 axle pup 4 axle dump truck, CAT 3406B with under 60,000 miles on inframe, 13 speed, good rubber. I have the parts to install AC in it, \$55,000. East Wenatchee, WA. 509-669-6457

210 Trucks



2004 Swenson Stainless Steel sand and compost distribution bed. 13ft. Complete with control box. Worked fine when taken out of service this year. Excellent condition and is ready to mount and go to work, \$4500. Located in Twin Falls ID. Call 208-613-0050

210 Trucks



1980 GMC 7000: 5 and 2 speed rear, 427 V8 engine, 37,825 indicated miles. 10 hole Bud wheels. 10-20 fronts, 11R225 rears. 19ft diamond plate steel bed, 2 fuel tanks, 2 large storage boxes under bed, \$4800. Sisters, OR. 541-771-4970

210 Trucks



2004 IHC 7400 Dump Truck with DT530 Diesel, 300HP. Eaton 10 speed Transmission. 37K. GVW. AC, Cruise, Jake brake. Plumbed for trailer. 70% 12/22.5 radials. Low miles. One owner former State agency. Very clean and well maintained. Ready to work, \$19,900. Located in Twin Falls ID. Call 208-613-0050

PLACE LINE CLASSIFIED ADS TOLL-FREE FROM ANYWHERE! 1-800-882-6789

DRIP TUBE INSTALLATION **CALL 503-932-0766**
TREE PLANTING
TREE & BRUSH REMOVAL
Klopfenstein Ag Service
 5223694-1

Newsday Crossword

- ACROSS**
 1 Surrounded by
 5 Helpers: Abbr.
 10 Use an eggbeater on
 14 Like drive-thru orders
 15 Speak
 16 Remove from office
 17 Close noisily
 18 Roaring beasts
 19 ___-day (vitamin dose)
 20 Listen secretly
 22 Borders
 23 "Am not!" response
 24 Purple flower
 26 Not very many
 29 Unexpected absentees
 33 By surprise
 38 Small apartment
 39 "You look like you ___ ghost!"
 40 Old saying
 42 Jail room
 43 Hams it up
 45 Toasts at a banquet
 47 Crosses out
 49 GPS suggestion: Abbr.
 50 Plane tracking device
 52 Cook in the oven
 57 Bottomless pit
 60 Desperate, as an effort
 63 Boring
 64 Toy truck brand
 65 Close by
 66 Remedy
 67 Ballot caster
 68 Cabbage variety

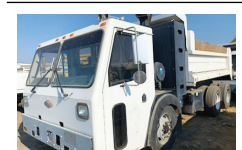
GOOD RIDDANCE by Billie Truitt
 Edited by Stanley Newman
 www.stanxwords.com

11 Displayed on the wall
 12 "It's clear now"
 13 School fund-raising orgs.
 21 Couch
 22 Toward sunrise
 25 Have a tantrum
 27 Cleared the blackboard
 28 Marry
 30 Poetic tributes
 31 Droop in the heat
 32 Fly alone
 33 No longer new
 34 Specify
 35 Military truant: Abbr.
 36 Major transition point
 37 Feeling blue

41 Watchdog's warning
 44 Cockpit announcements: Abbr.
 46 Uncool one
 48 Old West tavern
 51 Reached a total of
 53 Pigpen sounds
 54 Really bothered
 55 Weighing device
 56 Lobbed
 57 Kindergarten basics
 58 Sky-colored
 59 Knitter's supply
 61 Distort
 62 Repairs, as a road
 64 They hook up to DVD players

1	2	3	4	5	6	7	8	9	10	11	12	13		
14				15					16					
17				18					19					
20				21					22					
23						24		25						
				26	27	28		29			30	31	32	
33	34	35	36					37		38				
39				40				41		42				
43				44				45		46				
47								48		49				
				50				51		52	53	54	55	56
57	58	59				60		61	62					
63						64				65				
66						67				68				
69						70				71				

Answers in classification 752



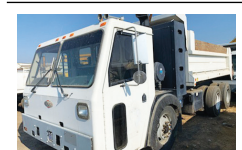
2013 Kenworth T800, 450HP, 13 Speed, Air Ride Suspension, 30" sleeper, Quad Axle, 24' Curtain Bed on Truck, 285,000 miles. Comes with 2005 Western Curtain Van, 32', 4-axle. All with Aluminum Wheels. \$87,500. Brooks, OR. 503-580-4261



1990 IHC 2674 cab and chassis. NTC400 Eaton 8LL transmission, PS, AC, Jake brake. Front mount PTO pump with tank. Double frame. Hendrickson spring rears. G11/22.5 Radials. Former County truck that has been well maintained, is very clean and work ready, \$14,900. Located in Twin Falls ID. Call 208-613-0050



1989 Ford L900 semi-tractor. 180K ACTUAL MILES, 6000 Hours. 3406B CAT Diesel Eaton 8LL transmission. PS, AC, Jake Brake. One owner former State DOT vehicle that has been well maintained. Good 22.5 radials. Runs and operates like new. Work ready. \$14,900. Located in Twin Falls ID. Call 208-613-0050



2007 Crane Carrier Company low entry tandem axle dump truck. 15 yard Bed. 8.3L John Deere COMPRESSED NATURAL GAS ENGINE. Allison 6 speed automatic. PS, AC, CC, Lockers. 60K GVW. Like new 22.5 tires. 17,165 ACTUAL MILES. This truck was Factory built and is in brand new condition throughout. One owner well maintained former California County truck, \$29,900. Located in Twin Falls ID. Call 208-613-0050



2005 Peterbilt 335MDL with 22.5ft. steel flat bed. Pete factory drop down 3rd axle. 64,000 GVW. Cummins ISC Diesel. Eaton 10 speed. PS, AC, CC, Jake Brake. Truck has near new 22.5 Radials and is a lease return with Penske maintenance since new. Southern California truck that is Rust free, spotlessly clean and runs and operates like new, \$34,900. Located in Twin Falls ID. Call 208-613-0050



2002 IHC 2674 Tandem Dump Truck. 15 yard bed with load tarp. Cummins N-14 diesel, 410 HP. Allison 4560 Automatic. 6 speed. Jake, side lockers. PS, AC, CC, PW. 124K ACTUAL MILES. 64,000 GVW. Hendrickson spring. Exceptionally clean and well maintained former state truck that runs drives and operates like new, \$32,900. Located in Twin Falls ID. Call 208-613-0050



2009 Sterling Acterra with 10ft. dump bed, 3500 LB. Autocrane and arrowboard. 6.7 Cummins diesel, Allison AT. PS, AC, CC, PW. 23,000 GVW. 245/19.5 tires are like new. 50,495 ACTUAL MILES. One owner former large City vehicle that is in like new condition. Work ready, \$24,900. Located in Twin Falls ID. Call 208-613-0050



2007 IHC 7400 single axle dump truck. 7 yard bed. DT570 Diesel. Eaton 10 speed transmission. Jake brake. AC, PS, CC. 37K. GVW. 80% 11/22.5 radials. One owner fleet maintained truck from a State Agency that is very clean. No rust and operates like a new truck, \$19,900. Located in Twin Falls ID. Call 208-613-0050



1994 Kenworth T800: Cummins L10 350HP with 718,623 miles, Fuller 9 speed transmission, AC, cruise control, Wiesner Metal Fab LLC built 22' bed with 6' racks. Harsh hoist, aluminum wheels, Hendrickson spring rears. \$54,000. Aumsville, OR. Call 503-551-1793

Capital Press Ag Weekly
It works!
 "I'm amazed by the number of people that see it (my Capital Press ad). For me, it's consistent. It's working."
 R.K. of Oregon
Capital Press
 800-882-6789
 CapitalPress.com



2003 Freightliner FL70 cab and chassis. 330HP CAT 3126 Diesel. Allison 6 speed. AT with retarder and PTO capable. PS, AC. 16ft. of straight 11in. frame. Brand new radials. 33,000 GVW. Former California State vehicle that is as clean as new and has had excellent fleet maintenance. Truck is in like new condition, \$12,900. Located in Twin Falls ID. 208-613-0050

LINN WEST, Inc.
 Year: 2006 Model: M2
 Manufacturer: Freightliner
 VIN#: 1FVHCYDC36HV63961
 Mileage: 475,690 Price: \$26,000
 Location: Tangent, OR
 Overhaul: NO - Fuel Type: Diesel
 Engine Make: Caterpillar
 Engine Type or Model: C7
 Transmission: Manual
 Suspension: Air Ratio: 3.90
 Transmission Type: Manual
 RT#: 8709B
 Tires: 295/75R22.5
 Wheels: Aluminum
 Number of Rear Axles: 2
 Front Axle Weight: 12,000
 Rear Axle Weight: 40,000
 Number of Speeds: 9
 Wheel Base: 256
LINN WEST, Inc.
 33731 OR 99E Tangent, OR 97389
 P • 541-926-2524
 F • 541-926-2418
 W • linnwest.com

2006 FREIGHTLINER CENTURY
 \$18,000 OBO
 Series 60 Engine
 10 Speed
 370 Gear Ratio
 1 million+ Miles

2011 FREIGHTLINER CASCADIA
 \$30,000 OBO
 DD 13 Engine
 10 Speed
 Aluminum Frame
 Light Weight
 540,000 + Miles
 373 Gear Ratio

2014 PETERBILT 379
 \$32,000 OBO
 Pat Car Engine
 13 speed
 336 gear ratio
 600,000 + miles
 Nice truck
 Set up for Hauling livestock

ALL TRUCKS ARE LOCATED IN HARRISBURG OREGON
 541-556-3982



(253) 863-8782
 Cell 206-510-4780
 sales@pro-truck.com



2010 Freightliner Cascadia 3-axle truck tractor, Detroit DD13 12.8L/450 Hp, Eaton Fuller 10-spd., OnBoard Diagnostics (ECM), 184" WB \$15,950



1996 International single axle 5 yd. dump, IHC DT466E/250 Hp, 13-spd., On Board Diagnostics (ECM), 155" WB..... \$19,500

www.pro-truck.com 5234071-1