

907 Nursery Equip. & Supplies



WANTED: High Hoop tunnels. Metal structures for covering fields. Boring, OR. 503-320-5980

USED NURSERY CONTAINERS:
Used, but reusable nursery containers. All sizes. Inventory changes daily. Call for current availability and prices. Sawyer Farms, Scio OR. 503-769-3417, juddsfarm@wvi.com (also wanted: used containers)

FRESH SAWDUST:
Consistently fair pricing. 9 Unit Loads Now Available Forest-Grove, OR. For pricing call 503-849-0216

Agricultural and natural resource coverage of the west.

Dependable. Definitive. Trusted.



Subscribe today. 1-800-781-3214
Capital Press
1-800-882-6789
CapitalPress.com

911 Hay Equip.

BB900 New Holland Baler 1000 hours, \$14,000 OBO. Lakeview, OR. 530-227-5700

2002 New Holland 1089 bale wagon, 3500 hours. Nice condition, \$85,000. 2002 New Holland 1089 bale wagon, 1,652 hours. Sharp, \$95,000. Polson, MT. 877-735-2108, 406-249-8565

RETIRING: HAY RAKES:
(3) Twinstar 2030- Rakes double frame, \$13,000.
(3) Harrell 8827: 12' Twinstar baskets, \$10,000
12' Baskets, new teeth, extended frame, \$4,000.
10.5' Twinstar baskets extended frame, \$4,000.

JOHN DEERE WINDROWER SWATHERS:
4990- 995 16ft head with all Hay tools conversions equal to 500R head, 6411 tractor hours, low hour header, \$28,000.
4990- 995 16ft head with all Hay tools conversions equal to 500R head, 4332 tractor hours, low hour header, \$32,000.

BIG BALERS:
(4) KRONE 1290 Big Packs- Serial #KBP12773090, 56000 bales, \$25,000. HDP HS- Serial #BP22933934, 9000 bales, \$95,000. HDP HS- Serial #KBP12885108, 25054 bales, \$60,000. HDP HS- Serial #KBP12874921, 27284 bales, \$50,000. Connell, WA. Call/ text 509-282-2355

New And Used Parts: for all models New Holland bale wagons. Largest inventory in North America. Sod Busters Sales, Polson, MT. 877-735-2108 or 406-883-2118

Large Supply of Rebuilt New Holland Bale Wagons: Also buying New Holland bale wagons. Sod Busters Sales, Polson, MT. 406-883-2118



1049 Stack Cruiser: runs and stacked hay in 2020. New rear tires, \$5,500. Saint Paul, OR. 503-538-6834

#1 Balewagons: Buy, Sell, New Holland 2&3 wide self-propelled, pull-type models, parts, tires, manuals. Caldwell, ID. 208-880-2889 www.balewagon.com

RETIRING

HAY EQUIPMENT FOR SALE: 9240 Hesston Swather only 960 hours \$38,000. 8827 Allen Basket Rake, \$8,700. Both 1 owner. Deutz Tedder, 4x4 Squeeze/ Dozer Combo. Roll-over plow, Discs, Land Plane, Small Ripper, Packer. Klamath Falls, OR. John 541-892-1948

Capital Press CLASSIFIEDS
1-800-882-6789
CapitalPress.com

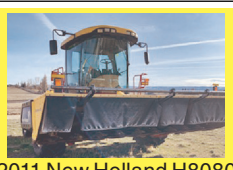
907 Nursery Equip. & Supplies

911 Hay Equip.

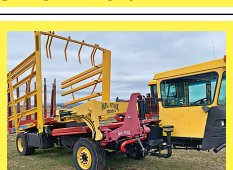
(2) 2014 Golden Eagle 18 Wheel rakes. Good shape, no cracks or breaks. Straight wheels, arms. Good paint, decent tires. \$18,500 each. Odessa, WA. 509-988-0721



New Holland Super 1048 Stacker. Runs & works, but needs some TLC, \$6500. North Plains, OR. 503-936-6562



2011 New Holland H8080 Swather: with 416, 16' disc bine header. Deluxe cab electric mirrors. 1900+/- hours. Good condition, field ready, \$69,000. Southeastern OR. 541-219-0741



New Holland Bale Wagon H9880. Has 4720 miles or 749 hours. Big bale clamp and little bale chute. Excellent Condition. One owner, \$155,000. Southeastern OR. 541-219-0741

H-2A LABOR & HOUSING

H-2A Farm Labor & Housing available. Housing starts @ \$10/ day. Yakima - Hermiston Region. AgriLabor- "Labor Where you want it, When you want it!" 541-571-9899 AgriLaborInc.com

Kirby 7x24 Bale Feeder. 5 foot side, 540 PTO, 5th wheel style running gear, \$15,000. Atwater, CA. 209-604-1342

Bale Squeeze: Holds (6) 14" bales, \$3000. Sequim, WA. 360-460-0696

RETIRING

John Deere Swather, runs great. New A/C. Vermeer 4ft. Round Baler. Gooseneck 24ft flatbed trailer. 16ft bumper pull flatbed. Brownsville, OR. 541-466-3377, 541-248-7279

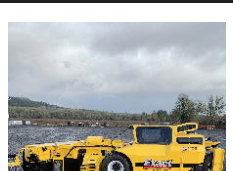


2015 Claas 960 Chopper 1637 hours, 1437 chopper hours, orbits 600 and 380 pickup head with less than 100 acres, cameras, kernel processor but removed, waxed and field ready, \$220,000. Silverton, OR. 503-932-0766

RCO Baits
Gophers • Squirrels
Voles • Moles
Dealer Locator: 1-800-214-2248 Harrisburg, OR 5219710-1

New Holland 16 HS Header
Very Good Condition, Rubber Rollers, & Extra Parts.
509-257-2413

917 Orchard/Vineyard Equip.



2010 Case International Quadtrac 485, 4200 hours, \$158,000. Silverton, OR. Cell 503-551-5809 Office 503-873-6774

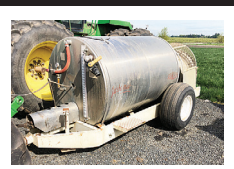
2019 Exact 1155 hazelnut sweeper, 243 hr. Up graded seat, radio, \$80,000. Corvallis, OR. Call 503-334-5117

ORCHARD THINNING: Mechanical thinning. Fast, reliable, low impact. FREE estimates. Serving Oregon 541-979-7282



1996 Littau harvester, side row, wide tunnel, Christy power heads, aluminum tube, 3/8" rods, set up for raspberries/ blueberries, \$39,000. Brooks, OR. 503-991-6753

917 Orchard/Vineyard Equip.



600 gallon turbo mist airblast, new electric valves, fully serviced and field ready, \$14,000. Silverton, OR. 503-932-0766

Plastic Tote Boxes: 48in x 48in., 28in. tall. AgriMAX 26. Like new, \$135 each OBO. Cornelius, OR. 503-341-4289

Gillison Pruning Tower: 20ft with hydraulic saw. Good condition, \$12,000. Salem, OR. 503-990-1219



2011 Littau ORXL: 2550 hours. Always stored inside, field ready. High density Blackberry heads or Blueberry heads, \$125,000. Gervais, OR. 503-932-0220



2016 Monchiero 20125 Hazelnut Harvester. 632 hours, well maintained. Very Good Condition, \$135,000. Corvallis, OR. 541-740-9073



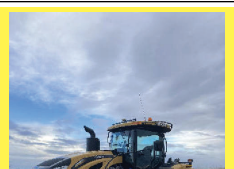
Pruning Tower 16 ft. HN 450 Afron, gas motor. Good condition, \$6500. Hydraulic lopper and chain saw also available Hillsboro, OR. 503-329-5253

920 Tractors

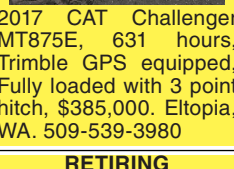
Allis Chalmers 7000, \$9,000. Case 1370, \$9,000. Also Grain Cart available. With 12 foot tandem disc, in good shape. John Deere corn planter, good shape. Mesa, WA. 509-521-7860

Attention: Wanted Kubota or John Deere, 4x4 compact tractor with loader/equipment. Carlton, OR. 503-550-0094

International Model 574 Diesel. New paint. Low original hours, power steering, remote hydraulics, 52HP, 8 speed transmission, \$7500. Stayton, OR. 503-859-2063, Cell: 503-559-5570



2017 CAT Challenger MT875E, 631 hours, Trimble GPS equipped, Fully loaded with 3 point hitch, \$385,000. Eltopia, WA. 509-539-3980



RETIRING

John Deere Tractors: 8530- 5418 hours, duals front and back, independent front axle, \$122,000. 8420- 5563 hours, new front rubber, \$75,000. 8520- 10,580 hours, 500 hours on rebuilt engine, new transmission at 8000 hours, flotation rubber, \$68,000. 8400- 9920 hours, Michelin Agri-Bib tires, \$55,000. 8400- 7250 hours, \$50,000. 4640- 10830 hours, with duals, \$18,000. 6125R- 5565 hours, \$48,000. 6400- 6270 hours, \$26,000. Steiger Bearcat III ST225 tractor, 5071 hours, extra weights, \$7,000. Connell, WA. Call/ text 509-282-2355.



John Deere 4030. Synchro Transmission. Great Engine. Good Condition. ROPS Canopy. Good, simple, reliable, \$5000. Seneca, OR 541-542-2558



John Deere 4230 Power shift transmission. Cab. 158 loader. Fair condition, \$9500. Seneca, OR. 541-542-2558



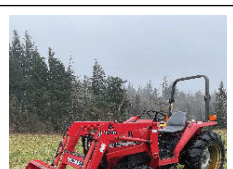
Galvanized Decking 36"Lx9"Wx1.5"D. Large quantities available. \$10 each. Davenport, WA. 509-721-0120

920 Tractors

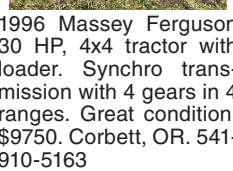
John Deere 8400T: new tracks and rollers, freshly rebuilt engine, lots of new parts, \$42,000 OBO. Turner, OR. 503-932-6080



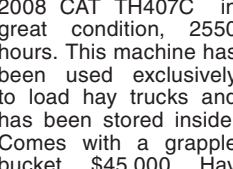
1948 Allis Chalmers Grasshopper, runs great, good paint, no implements, \$5500. Arlington, OR. Call Ron 541-454-2502, evenings.



1996 Massey Ferguson 30 HP, 4x4 tractor with loader. Synchro transmission with 4 gears in 4 ranges. Great condition, \$9750. Corbett, OR. 541-910-5163



2008 CAT TH407C in great condition, 2550 hours. This machine has been used exclusively to load hay trucks and has been stored inside. Comes with a grapple bucket, \$45,000. Hay forks available at addition cost. Heppner, OR. 541-980-5045



Tractor- New Holland 2012 T6.155. 846 hours with 855TL loader with 3rd function. One owner. Excellent Condition, \$105,000. Southeastern, OR. 541-219-0741



Tractor: T7-260: 2013 Ford New Holland. 700 hours. 260HP, 180 PTO, 4 remotes, duals, weights on front, 4x4. One Owner. Excellent condition. Used with New Holland Big Baler 340, \$150,000. Southeastern, OR. 541-219-0741



Massey Ferguson 50: 1961, multi-power, Continental gas engine, good condition, \$5000. Salem, OR. 503-428-2264



John Deere D5510 N Tractor, 4WD, Cab, A/C, New Clutch, New Hydraulic Pump, Cab Guard. Nice Tractor! \$19,500. Klamath Falls, OR. 541-880-8318



923 Farm Equipment

Jay's EQUIPMENT SEAT COVERS
PROTECT YOUR SEATS
Equipment Seat Covers Fits: Tractors, Forklifts, Loaders, Backhoes, Skid Steers, Excavators, Semi Trucks, More. 541-401-5933 EquipmentSeatCovers.com

PRICE REDUCED Complete Mint Still. Was \$80,000, now \$65,000 January Only. 2001 Hurst 500hp natural gas, one owner boiler, 5 stalls all Newhouse (mostly 1997 some newer) condensers, receiving cans, feed pumps, vapor lines, steam lines, temperature controls and steam controls. To be disassembled and moved by buyer, \$65,000. We also have tubs, choppers, trucks and a planter to be sold with still or after. Imbler, OR. 541-786-2159; 541-534-9655



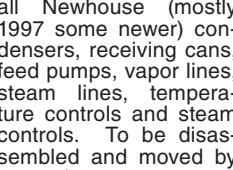
WANTED: High Hoop tunnels. Metal structures for covering fields. Boring, OR. 503-320-5980

"I get great results with Capital Press...and I have for over 20 years." Mark, Pro Truck
Call 1-800-882-6789 to advertise.

WANTED

923 Farm Equipment

NEW IA Heavy Duty Off-set Wheel Discs. Scraper kit, EZ adjust gang angle, split gang axles, 26" notched blades front and rear.
•12ft. \$13,400
•15ft. \$14,900
•18ft. \$16,400.
8,000 lbs. Introductory pricing. Order NOW!
Bend, OR. 541-548-7185 mtcsales.net

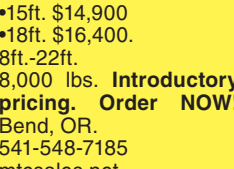


IT'S SO EASY TO PLACE CAPITAL PRESS CLASSIFIED ADS... PHONE TOLL FREE 1-800-882-6789

923 Farm Equipment

GLOBAL HARVEST FOODS

NOW CONTRACTING
NEW CROP SUNFLOWER ACREAGE - 40 ACRES MIN
Contracts are available with flexible delivery and/or storage options. Contact Tim Mondoux (509) 416-5258 • tmondoux@ghfoods.com



GLOBAL HARVEST FOODS
NOW CONTRACTING
NEW CROP SUNFLOWER ACREAGE - 40 ACRES MIN
Contracts are available with flexible delivery and/or storage options. Contact Tim Mondoux (509) 416-5258 • tmondoux@ghfoods.com

KIOTI
run ahead of the pack
FISCHER MILL SUPPLY, INC.
EST. 1889 503-631-3411 OREGON CITY, OR
NEW KIOTI TRACTORS
CS 2220 - 21 HP Tractor w/Loader, 3 Cyl. Diesel, HST, Mid & Rear PTO CALL
CK 2610 CAB - 24.5 HP Tractor w/Loader, 3 Cyl. Diesel, HST, Rear PTOCALL
RX 7320 - 73 HP Tractor, 4 Cyl. Turbo Diesel, 12/12 Synchro Shuttle..... Coming In
VISIT FISCHERMILLSUPPLY.COM TO SEE ALL INVENTORY
USED TRACTORS
Massey 4610, 99hp, 4WD, cab, loader..... CALL
Massey GC1705, 22.5hp, w/lr, brush hog...\$13,500
Massey 1532HST, 32hp, Tractor/Loader..... \$12,500
Ford 1715, 27hp, 4WD, Tractor/Loader..... Coming In
USED HAY EQUIPMENT
New Holland 1048S Bale Wagon\$10,900
Massey 1745 Round Baler.....\$16,900
New Holland 565 Small Square Baler.....CALL
New Holland BC5070 Square Baler.....COMING IN
Massey 1363 Disc Mower cond, 9'10"CALL
Kuhn GRS24 Tedder/Rake\$3,250
MISCELLANEOUS
CASE CX130 Excavator, Thumb, 2 Bkts..... CALL
Erskine Utility Grapple 60"\$3,700
Muratori MT20N Flail Mower, 61" CALL
200gal. Skid Sprayer with Honda Engine \$2,850
Montana Air Blast Sprayer 110gal..... \$4,950
Kuhn MDS10.1 Fertilizer Spreader \$4,950
Knight 725 Manure Spreader, Not on Site \$9,750
New Holland 213 Manure Spreader..... \$4,250
Aerway AW050S 3pt. Aerator, 60" \$2,950
SEE OUR AD EVERY OTHER WEEK!

APACHE ET SPRAYERS
Lightest in the Industry!
Call Us Today for your FREE QUOTE!
MORE BOOM FOR YOUR BUCK
Covering the Entire Willamette Valley
Grauer Repair Service, Inc.
Call us today! 503-843-3440
Grauer Repair Service Inc
23230 DeJong Rd.
Sheridan, Oregon 97378

FRESH SAWDUST
• 5-20 Unit Loads
• Fresh Sawdust or Shavings
• Consistently Fair Pricing
CALL TODAY FOR PRICING!
503-849-0216 • FOREST GROVE, OR.

BALE SKIIS
BALER LINER
Winter Maintenance SALE
\$50 OFF - SMALL BALER \$100 OFF - LARGE BALER THROUGH FEBRUARY 28th
INCREASE FORAGE QUALITY
SOLVE KNOTTER PROBLEMS
CONSISTENT BALE LENGTHS
REDUCE WEAR/DOWN TIME
INCREASE FUEL EFFICIENCY
Toll Free 866-889-3846
baleskiis@LDAGmachinery.com
LDAGmachinery.com

923 Farm Equipment
Disc Plow...\$5,000
6 Bottom Watts Plow.....\$6,000
27 - Treated 27' poles.....\$900
14 foot NW Rototiller.....\$15,000
16 foot Cultivator.....\$1,000
20 foot Dandle Chopper\$3,500
Sugar Beet 6 Row Defoileitor.....\$4,000
Belt Loader \$2,500
Cattle Squeeze \$1,500
Crissafulli 16 inch Pump.....\$9,000
Cultipackers.....\$500
Disc Checker Tower.....\$5,000
Farmhand F11 Front End Loader \$11,500
Gheen 10 Inch Pipe Press \$10,000
Grain Trailer.....\$5,000
JD Trailer and Boom.....\$2,000
Mint Planter.....\$2,500
Mint Trailer.....\$1,000
New Holland 55 Hay Rake.....\$800
Rock Trailer.....\$10,000

SUKRAW FARMS
(541) 891-8740 • Klamath Falls, OR • (541) 884-8740
NEW IA Rotary Mowers
•6ft. 3 Point \$1,695
•7ft. 3 Point \$1,795
•10ft. 3 Point \$3,295
•12ft. 3 Point \$3,595
Bend, OR. Call Scott 541-548-7185. Visit: mtcsales.net
New IA Switch Plows
•3 Bottom \$7,995
•4 Bottom \$8,995
•5 Bottom \$9,995
•6 Bottom \$14,995
•7 Bottom \$15,995
Poly Wear Armor HD Components Trip Bottoms Bend, OR. Call Scott 541-548-7185 mtcsales.net