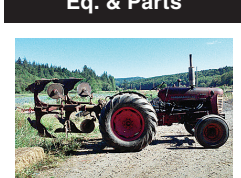


905 Antique Farm Eq. & Parts



1955 International 350 Diesel Utility. Runs great. Ready to Restore. 2-bottom 2-way plow, rebuilt fuel system. New hydraulic pump, block heater, rear tires. Accepts 3-point, \$4500 OBO. Quilcene, WA. 360-765-3394, 360-301-3015

1-800-882-6789
CapitalPress.com

A picture is worth a 1,000 words



Add a full color photo to your print and online ads today by calling **800-882-6789**

Capital Press
CapitalPress.com

907 Nursery Equip. & Supplies

FRESH SAWDUST: Consistently fair pricing. 9 Unit Loads Now Available Forest-Grove, OR. For pricing call 503-849-0216



WANTED: High Hoop tunnels. Metal structures for covering fields. Bor-ing, OR. 503-320-5980

USED NURSERY CONTAINERS:

Used, but reusable nursery containers. All sizes. Inventory changes daily. Call for current availability and prices. Sawyer Farms, Scio OR. 503-769-3417, juddsfarm@wvi.com (also wanted: used containers)

911 Hay Equip.



WANTED: John Deere Balers: Model 337, 338, 347, 348. Complete or parts. 360-815-6750

911 Hay Equip.



New Holland HW365 Swather: with 2355 rotary header, 1638 hours. All new tires, asking \$50,000. Pasco, WA. 509-727-1536 No Sunday calls.



New Holland Swather H8080. Runs and cuts great. Header has quick change blades. 2382 engine hrs, \$56,000. Redmond, OR. 541-891-4087

2013 McHALE FUSION 3: 38,000 bales, \$45,000. Good condition. It will be field ready. Tillamook, OR. 503-812-2069



Pequea 1820HD 17 Wheel Rake. 29' working width. Excellent condition. Field Ready. Visit iokafarms.com for more information. Silverton, OR. 503-991-7138

911 Hay Equip.

BB900 New Holland Baler 1000 hours, \$14,000 OBO. Lakeview, OR. 530-227-5700

2002 New Holland 1089 bale wagon, 3500 hours. Nice condition, \$85,000. 2002 New Holland 1089 bale wagon, 1,652 hours. Sharp, \$95,000. Polson, MT. 877-735-2108, 406-249-8565

RETIRING: HAY RAKES:

(3) Twinstar 2030- Rakes double frame, \$13,000. (3) Harrell 8827: 12' Twinstar baskets, \$10,000. 12' Baskets, new teeth, extended frame, \$4,000. 10.5' Twinstar baskets, extended frame, \$4,000.

JOHN DEERE WINDROWER SWATHERS:

4990- 995 16ft head with all Hay tools conversions equal to 500R head, 6411 tractor hours, low hour header, \$28,000. 4990- 995 16ft head with all Hay tools conversions equal to 500R head, 4332 tractor hours, low hour header, \$32,000.

BIG BALERS:

(4) KRONE 1290 Big Packs- Serial #KBP12773090, 56000 bales, \$25,000. HDP HS- Serial #BP2Z933934, 9000 bales, \$95,000. HDP HS- Serial #KBP12885108, 25054 bales, \$60,000. HDP HS- Serial #KBP12874921, 27284 bales, \$50,000. Connell, WA. Call/ text 509-282-2355

New And Used Parts: for all models New Holland bale wagons. Largest inventory in North America. Sod Busters Sales, Polson, MT. 877-735-2108 or 406-883-2118



HAY EQUIPMENT FOR SALE: 9240 Hesston Swather only 960 hours \$38,000. 8827 Allen Basket Rake, \$8,700. Both 1 owner. Deutz Tedder, 4x4 Squeeze/ Dozer Combo. Roll-over plow, Discs, Land Plane, Small Ripper, Packer. Klamath Falls, OR. John 541-892-1948

"...Sold both bulls second week. Thanks!" Tiara Farm Port Townsend, Wash. You sell too at 1-800-882-6789.

907 Nursery Equip. & Supplies

911 Hay Equip.

Large Supply of Rebuilt New Holland Bale Wagons: Also buying New Holland bale wagons. Sod Busters Sales, Polson, MT. 406-883-2118

#1 Balewagons: Buy, Sell, New Holland 2&3 wide self-propelled, pull-type models, parts, tires, manuals. Caldwell, ID. 208-880-2889 www.balewagon.com

(2) 2014 Golden Eagle 18 Wheel rakes. Good shape, no cracks or breaks. Straight wheels, arms. Good paint, decent tires. \$18,500 each. Odessa, WA. 509-988-0721

CAPITAL PRESS CLASSIFIEDS GET RESULTS!

RCO Baits
Gophers • Squirrels
Voies • Moles
Dealer Locator
1-800-214-2248
Harrisburg, OR \$21970-1

917 Orchard/Vineyard Equip.



2015 Flory Sweeper: 57 Series, No cab, 7ft head, gas powered, brand new, 15 hours. Asking \$47,500 OBO. Salem, OR. 503-378-9179



2019 Exact 1155 hazelnut sweeper, 243 hr. Up graded seat, radio, \$80,000. Corvallis, OR. Call 503-334-5117

ORCHARD THINNING: Mechanical thinning. Fast, reliable, low impact. FREE estimates. Serving Oregon 541-979-7282



1996 Littau harvester, side row, wide tunnel, Christy power heads, aluminum tube, 3/8" rods, set up for raspberries/ blueberries, \$39,000. Brooks, OR. 503-991-6753



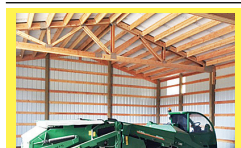
600 gallon turbo mist airblast, new electric valves, fully serviced and field ready, \$14,000. Silverton, OR. 503-932-0766

Plastic Tote Boxes: 48in x 48in., 28in. tall. Agri-MAX 26. Like new, \$135 each OBO. Cornelius, OR. 503-341-4289

Gillison Pruning Tower: 20ft with hydraulic saw. Good condition, \$12,000. Salem, OR. 503-990-1219

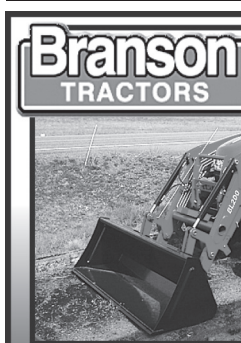


2011 Littau ORXL: 2550 hours. Always stored inside, field ready. High density Blackberry heads or Blueberry heads, \$125,000. Gervais, OR. 503-932-0220



2004 Monchiero 20125 Hazelnut Harvester. 632 hours, well maintained. Very Good Condition, \$135,000. Corvallis, OR. 541-740-9073

920 Tractors



24 - 80 hp., 4WD, Compact Syncro-Shuttle, Hydro 24, 28, 35, 47 hp

THE TRACTOR STORE
(541) 342-5464
5450 W. 11th, EUGENE, OR

920 Tractors



John Deere D5510 N Tractor, 4WD, Cab, A/C, New Clutch, New Hydraulic Pump, Cab Guard. Nice Tractor! \$20,000. Klamath Falls, OR. 541-880-8318

John Deere 8400T: new tracks and rollers, freshly rebuilt engine, lots of new parts, \$42,000 OBO. Turner, OR. 503-932-6080

Backhoe Attachment. Fits a 21-40 HP Tractor. Fits 855 John Deere or any Kubota. No email or text. Phone Calls Only, \$2500. Monroe, OR. 541-321-9088



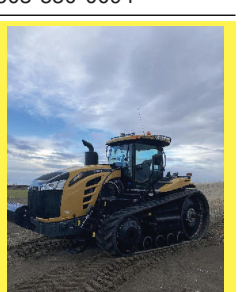
Great Bend 770 Loader: fits 1066 International Tractor, \$4500. Pasco, WA. 509-727-1536. No Sunday Calls.

2018 John Deere 5085M, 4WD, 85HP Tractor, w/540M level loader, bucket & forks, 230 hrs, 32 x 16 SPD w/ Hi-Lo, power reverser, 3rd hydraulic function loader, 3 remotes, 540/540E, Warranty, \$55K OBO, Oakland, OR, Call 541-459-4265, ewoc123@yahoo.com

John Deere 2440 Tractor. John Deere 2940 Tractor. 1959 John Deere 730 Diesel Tractor. International 3588 Tractor. John Deere 690B Track Hoe Excavator. Retirement Sale. Everything in great condition. Elgin, OR. 541-437-8181

Allis Chalmers 7000, \$9,000. Case 1370, \$9,000. Also Grain Cart available. With 12 foot tandem disc, in good shape. John Deere corn planter, good shape. Mesa, WA. 509-521-7860

Attention: Wanted Kubota or John Deere, 4x4 compact tractor with loader/ equipment. Carlton, OR. 503-550-0094



2017 CAT Challenger MT875E, 631 hours, Trimble GPS equipped, Fully loaded with 3 point hitch, \$385,000. Eltopia, WA. 509-539-3980

RETIRING

John Deere Tractors: 8530- 5418 hours, duals front and back, independent front axle, \$122,000. 8420- 5563 hours, new front rubber, \$75,000. 8520- 10,580 hours, 500 hours on rebuilt engine, new transmission at 8000 hours, flotation rubber, \$68,000. 8400- 9920 hours, Michelin Agri-Bib tires, \$55,000. 8400- 7250 hours, \$50,000. 4640- 10830 hours, with duals, \$18,000. 6125R- 5565 hours, \$48,000. 6400- 6270 hours, \$26,000. **Steiger Bearcat III** ST225 tractor, 5071 hours, extra weights, \$7,000. Connell, WA. Call/ text 509-282-2355.



2010 Case International Quadtrac 485, 4200 hours, \$158,000. Silverton, OR. Cell 503-551-5809 Office 503-873-6774

920 Tractors

International Model 574 Diesel. New paint. Low original hours, power steering, remote hydraulics, 52HP, 8 speed transmission, \$7500. Stayton, OR. 503-859-2063, Cell: 503-559-5570

923 Farm Equipment



Ag Chem-Ag Gator 1004: 5,656 hours since complete restoration in 1998. 5.9 Cummins, Allison automatic. John Deere planetary axles. Raven Envivio Pro field computer. 70" GK stainless steel wet booms on 20" spacing. Michelin mega big flotation tires. Boom primers. 600 gallon stainless steel tank with mechanical agitation. 15x35 adjustable rims included. Selling with 2 axle pintle hook trailer. Visit www.iokafarms.com for more pictures, \$87,500. Silverton, OR. 503-991-7138



Slightly Used 6 row 22" onion seed umbel harvester. Manufactured by Wurding Manufacturing. Mounted on a Pixall EL-20 picker, \$155,000. Warden, WA. 509-760-5952

•Byron 1514 Dump Chief, \$40,000.
•3 point Mount Gilmore Fertilizer Spreader, \$9000
•1987 Freightliner 21' flat bed and hoist, 6' racks, \$34,000
•1991 EL-20 Pixall cornstalker with Fargo dump box, \$40,000.
•2008 Wil-Rich V957 disc-ripper, \$14,000.
•1981 Case 4890 tractor, 7347 hours, \$12,000. Aumsville, OR. Call 503-551-1793



Miller Nitro 4365, 2009: 4500 hrs, 1600 gal SS tank, 120" front boom, Viper 4 display, all new rebuilt wheel motors, \$124,900. Ione, OR. 541-701-7772



H-2A LABOR & HOUSING
H-2A Farm Labor & Housing available. Housing starts @ \$10/ day. Yakima - Hermiston Region. AgriLabor: "Labor Where you want it, When you want it!" 541-571-5989 AgriLaborInc.com



Western STORAGE TRAILERS 1-800-652-7368
1-800-OK-2-RENT Rent or Sale Containers and Trailers
CONTAINERS: 20' & 40'
TRAILERS: 27', 40', 45' & 48'
Western Mobile Storage
1-800-652-7368 • 541-342-1835
Eugene, OR 5223839-1



TONS OF USED FARM WHEELS
AG West point-S Rickreall 503-623-9171 ~ Mike



Containers For Sale 20' and 40'
REFRIGERATED CONTAINERS AVAILABLE
Portland Container
9449 N. Burgard Way, Portland OR
Call Alan Conner (503) 286-1767 or 1-800-788-5159
boxsales@pdxcontainer.com (Credit Cards Accepted) 520642-1

OREGON VALLEY GREENHOUSES INC. Greenhouse Manufacturing & Supplies
Oregon Valley GREENHOUSES
503-678-2700
info@ovg.com * www.ovg.com
20357 Hwy 99E * Aurora, OR 97002
4.25' Clear Corrugated Poly Carbonate lengths 8, 10, 12, 14, 16 & 24
\$1.00 per sq ft
12' WIRE LOCK base, wires and screws \$12.54
5223672-1

ALSO OFFERING
Poly
Poly Carbonate
Shade Cloth
Ground Cover
Wire Lock
Roll-Ups
Heaters
Exhaust Fans
Code Structures
Gutter Connects
5223672-1

OUTSTANDING IN OUR FIELD, AND YOURS!
GK MACHINE INC
INCREASE YOUR EFFICIENCY
Call for a friendly quote! **503-678-5525**
10590 Donald Road NE · Donald, Oregon 97020 **WWW.GKMACHINE.COM**

Miss a week, miss a great deal!
Get the latest agricultural and natural resources news. Anytime. Anywhere.
• 1 year \$55
• 2 years \$100
• EZ Pay \$4/month
Capital Press EMPOWERING PRODUCERS OF FOOD & FIBER
1-800-781-3214
CapitalPress.com

FARM & HOME SUPPLY
1-888-643-3395 • 509-843-3395
www.fhsupply.com Pomeroy, WA
2001 CASE IH 2388 Combine Hilco Leveler, 3,382 Sep. Hrs./Case IH 1010 Header 30FT/Cart.....\$75,500
2000 Case IH 2388 Combine Hilco Leveler, 4492 sep. hrs./Case IH 1010 30 Ft Header/ Cart \$74,750
2016 CASE IH 580 QUADTRAC 36 in tracks, PTO, Guidance\$295,750
2004 CASE IH STX 450 Quadtrac, 7,855-HRS, 36" TRACKS, PTO\$110,500
1998 CASE IH 9370 QUADTRAC, 2 NEW 30in. tracks\$49,500
1995 JD 8770 Wheel Tractor, New Tires.....\$35,500
New Great Plains 3000 Turbo Max/Harrow.....CALL
20 Great Plains FLEX HARROW 51' 16-bar HD.....CALL
Schulte Mower 5026.....RENT OR LEASE
NEW Schulte FX-530 30' Rotary CutterCALL
NEW KIOTTI PX1153 Tractor, Power Shuttle, cab & self-leveling loader, 115-hp.....CALL
2009 Unverferth 7250 Grain Cart 750 bu\$22,500
CASE IH AGRICULTURE 5224482-1