

899 Heavy & Indust. Eq.

John Deere 160CLC Excavator. 8300 hours. Excellent condition, \$65,500. John Day, OR. 541-620-1119

REPLACEMENT DECAL SETS

Construction, Forestry & Ag Equipment. Fast, Knowledgeable, Reliable Service. 215-536-5339 email: info@CustomServicesCompany.com



1980 CAT D8K dozer, Canopy, ripper, u blade, good undercarriage. \$39,500. Estacada, OR. 503-975-4324



2014 CAT 312EL Excavator. 3900 Hours. 3 Buckets. \$105,000. Silverton, OR. 503-932-0766

CASE INDUSTRIAL PARTS

We sell genuine, after market, and used CASE parts at discount prices nationwide. Call For Free Catalog.

CENTRAL EQUIPMENT

AFTER MARKET & USED PARTS Medford, OR (888) 593-8749

899 Heavy & Indust. Eq.



Gallon 503L Grader IHC 6 Cyl Diesel. Excellent, tight, well-maintained. \$26,672 or offer. Call Steve at 541-953-3951

907 Nursery Equip. & Supplies



WANTED: High Hoop tunnels. Metal structures for covering fields. Bor-ing, OR. 503-320-5980

USED NURSERY CONTAINERS:

Used, but reusable nursery containers. All sizes. Inventory changes daily. Call for current availability and prices. Sawyer Farms, Scio OR. 503-769-3417, juddsfarm@wvi.com

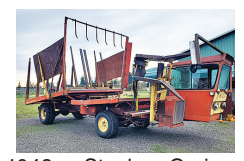
FRESH SAWDUST:

Consistently fair pricing. 9 Unit Loads Now Available Forest-Grove, OR. For pricing call 503-849-0216

911 Hay Equip.

(4) Freeman 370 Balers. All 4 cylinder Deutz engines, good condition. Mesa, WA. Call or text for pricing. 509-539-6432

BW 28 New Holland Bale Wagon: updated tires and wheels, 2400 hours, great condition, \$90,000. Mesa, WA. Call/ text 509-539-6432



1049 Stack Cruiser: runs and stacked hay this year. New rear tires, \$5,500. Saint Paul, OR. 503-538-6834



New Holland HW340 Disk Mower, New Holland 216 Rake, Freeman 1592 Big Baler, Two Twin Star 2030 G2-7 Rakes, John Deere 4850 Tractor, Wishek 862-NT 16' disk, Case IH 770 Disk, Kuhn HR4004D Power Harrow. Culver, OR. 541-915-5067

1983 Hyster 180 Hay Squeezer: good condition. Powered by small block Chevy gas. All new LED lights, full service; fluid and filters, \$20,000. Enumclaw, WA. 360-825-4720

911 Hay Equip.

#1 Balewagons: Buy, Sell, New Holland 2&3 wide self-propelled, pull-type models, parts, tires, manuals. Caldwell, ID. 208-880-2889 www.balewagon.com

Large Supply of Rebuilt New Holland Bale Wagons: Also buying New Holland bale wagons. Sod Busters Sales, Polson, MT. 406-883-2118

New And Used Parts: for all models New Holland bale wagons. Largest Inventory in North America. Sod Busters Sales, Polson, MT. 877-735-2108 or 406-883-2118

(2) 2014 Golden Eagle 18 Wheel rakes. Good shape, no cracks or breaks. Straight wheels, arms. Good paint, decent tires. \$18,500 each. Odessa, WA. 509-988-0721



WANTED: John Deere Balers: Model 337, 338, 347, 348. Complete or parts. 360-815-6750

RETIRING

HAY EQUIPMENT FOR SALE: 9240 Hesston Swather only 960 hours \$38,000. 8827 Allen Basket Rake, \$8,700. Both 1 owner. Deutz Tedder, 4x4 Squeezer/Dozer Combo. Roll-over plow, Discs, Land Plane, Small Ripper, Packer. Klamath Falls, OR. John 541-892-1948



New Holland HW365 Swather: with 2355 rotary header, 1638 hours. All new tires, asking \$50,000. Pasco, WA. 509-727-1536 No Sunday calls.



New Holland Swather H8080. Runs and cuts great. Header has quick change blades. 2382 engine hrs, \$56,000. Redmond, OR. 541-891-4087

911 Hay Equip.

2002 New Holland 1089 bale wagon, 3500 hours. Nice condition, \$85,000. 2002 New Holland 1089 bale wagon, 1,652 hours. Sharp, \$95,000. Polson, MT. 877-735-2108, 406-249-8565

2013 McHALE FUSION 3: 38,000 bales, \$45,000. Good condition. It will be field ready. Tillamook, OR. 503-812-2069



Pequea 1820HD 17 Wheel Rake. 29' working width. Excellent condition. Field Ready. Visit iokafarms.com for more information. Silverton, OR. 503-991-7138

RCO Baits

Gophers • Squirrels Voles • Moles Dealer Locator 1-800-214-2248 Harrisburg, PA 717-909-1

917 Orchard/Vineyard Equip.



2015 John Deere 5115ML: no def fluid needed, exact orchard cab, 3 remotes, 3,500 hours. Financing available \$60,000. Albany OR 503-510-7779

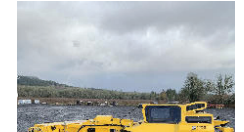


2015 Flory Sweeper: 57 Series, No cab, 7ft head, gas powered, brand new, 15 hours. Asking \$47,500 OBO. Salem, OR. 503-378-9179

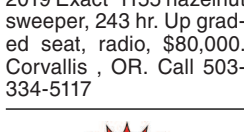


1996 Littau harvester, side row, wide tunnel, Christy power heads, aluminum tube, 3/8" rods, set up for raspberries/ blueberries, \$39,000. Brooks, OR. 503-991-6753

2008 Littau Over the Row Harvester: 3500 hours, HD Power Heads, barrel conveyor, canopy, \$104,500. Portland, OR. 503-312-1538



2019 Exact 1155 hazelnut sweeper, 243 hr. Up graded seat, radio, \$80,000. Corvallis , OR. Call 503-334-5117



For Sale or Trade Challenger MT655B: 8000 hours. Trade for 70HP to 80HP tractor. Downsizing. Salem, OR. 503-551-1578



(2) New Porter Orchard Boss's: under 50 hours. Starting at \$35,000. Philomath, OR. 541-929-2234



Flory 7655 Sweeper: field ready, 2537 hours, \$28,000. For additional equipment visit www.klopfensteinag.com Silverton, OR. 503-932-0766



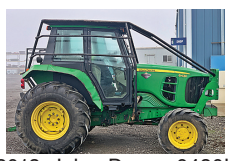
2012 Exact Hazelnut Sweeper. Enclosed cab, AC, closing arm with brush. 75 HP John Deere diesel. Runs and operates excellent. 702 hours. \$39,000. Tangent, OR. 503-577-0228

ORCHARD THINNING: Mechanical thinning. Fast, reliable, low impact. FREE estimates. Serving Oregon 541-979-7282



Pruning Tower 16 ft. HN 450 Afron, gas motor. Good condition, \$6500. Hydraulic lopper and chain saw also available Hillsboro, OR. 503-329-5253

917 Orchard/Vineyard Equip.



2013 John Deere 6430L MFWD with John Deere factory orchard spray cab. 7416 hours on tractor, Zero hours on new engine, power quad transmission with left-hand reverser, limb guard, good condition, \$36,500 OBO. Dayton, OR. 503-437-4833

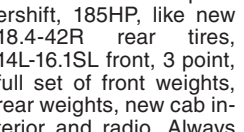
920 Tractors



John Deere 4430. 12,700 hr. Original owner, Great Shape, \$12,500. North Plains, OR. 503-706-2669



Attention: Wanted Kubota or John Deere, 4x4 compact tractor with loader/ equipment. Carlton, OR. 503-550-0094



John Deere 4840: powershift, 185HP, like new 18.4-42R rear tires, 14L-16.1SL front, 3 point, full set of front weights, rear weights, new cab interior and radio. Always shedded. Excellent condition, \$24,500. Othello, WA. 509-760-3276

WANTED: John Deere 5100M 2 pair of lift arms for rear three point. 503-838-3779



2013 John Deere 8235R 3200 hours. Duals, wheel weights, Cab MFWD power shift, duals and wheel weights. Have all specs. Touchscreen GS3 Command Center, 7in. color display, video capable, Starfire 3000 receiver, Great condition. Too much to list. \$110,000. Quincy, WA. 509-750-4319, 509-398-6558. gailynn1972@hotmail.com



Buhler Versatile Tractor 2335. 4,500 hours. \$70,000. Jefferson, OR. 541-327-1645

John Deere 8400T: new tracks and rollers, freshly rebuilt engine, lots of new parts, \$42,000 Turner, OR. 503-932-6080



8940 Case International Tractor: new tires, 4 remotes, 6400 hours, \$61,500. Make offer. Pasco, WA. 509-430-1122



Great Bend 770 Loader: fits 1066 International Tractor, \$4500. Pasco, WA. 509-727-1536. No Sunday Calls.



2018 John Deere 5085M, 4WD, 85HP Tractor, w/540M level loader, bucket & forks, 230 hrs, 32 x 16 SPD w/ Hi-Lo, power reverser, 3rd hydraulic function loader, 3 remotes, 540/540E, Warranty, \$55K OBO, Oakland, OR, Call 541-459-4265, ewoc123@yahoo.com

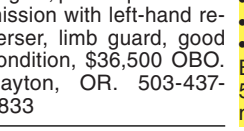
923 Farm Equipment

920 Tractors

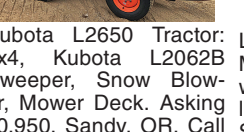
RETIRING John Deere Tractors: 8530- 5418 hours, duals front and back, independent front axle, \$122,000. 8420- 5563 hours, new front rubber, \$75,000. 8520- 10,580 hours, 500 hours on rebuilt engine, new transmission at 8000 hours, flotation rubber, \$68,000. 8400- 9920 hours, Michelin Agri-Bib tires, \$55,000. 8400- 7250 hours, \$50,000. 4640- 10830 hours, with duals, \$18,000. 6125R- 5565 hours, \$48,000. 6400- 6270 hours, \$26,000. Steiger Bearcat III ST225 tractor, 5071 hours, extra weights, \$7,000. Connell, WA. Call/ text 509-282-2355.



2013 John Deere 6430L MFWD with John Deere factory orchard spray cab. 7416 hours on tractor, Zero hours on new engine, power quad transmission with left-hand reverser, limb guard, good condition, \$36,500 OBO. Dayton, OR. 503-437-4833



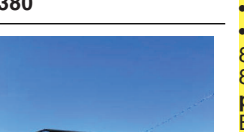
Kubota L2650 Tractor: 4x4, Kubota L2062B Sweeper, Snow Blower, Mower Deck. Asking 10,950. Sandy, OR. Call Pepe: 503-544-3232; Call Pat: 503-407-9062



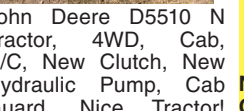
Case International 9170, Year 1989, 325 HP, Bare back 4 remotes power shift. Ready to go to work!, \$25,000. Forest Grove, OR. 503-502-4380



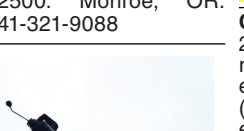
John Deere D5510 N Tractor, 4WD, Cab, A/C, New Clutch, New Hydraulic Pump, Cab Guard. Nice Tractor! \$20,000. Klamath Falls, OR. 541-880-8318



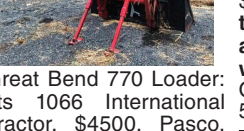
Backhoe Attachment. Fits a 21-40 HP Tractor. Fits 855 John Deere or any Kubota. No email or text. Phone Calls Only, \$2500. Monroe, OR. 541-321-9088



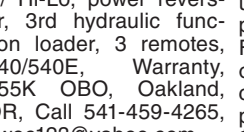
Complete Mint Still 2001 Hurst 500hp natural gas, one owner boiler, 5 stalls all Newhouse (mostly 1997 some newer) condensers, receiving cans, feed pumps, vapor lines, steam lines, temperature controls and steam controls. To be disassembled and moved by buyer, \$80,000. We also have tubs, choppers, trucks and a planter to be sold with still or after. Imbler, OR. 541-786-2159; 541-534-9655



Deice highway spray unit. 2500 gallon. Complete with all controls. 13 Foot long Slide in slide out, that is in like new condition. Hydraulic, powered. Work ready, \$4900. Located in Twin Falls, ID. Call 208-613-0050



2018 John Deere 5085M, 4WD, 85HP Tractor, w/540M level loader, bucket & forks, 230 hrs, 32 x 16 SPD w/ Hi-Lo, power reverser, 3rd hydraulic function loader, 3 remotes, 540/540E, Warranty, \$55K OBO, Oakland, OR, Call 541-459-4265, ewoc123@yahoo.com



Deice highway spray unit. 2500 gallon. Complete with all controls. 13 Foot long Slide in slide out, that is in like new condition. Hydraulic, powered. Work ready, \$4900. Located in Twin Falls, ID. Call 208-613-0050

Nyssa Tractor & Implement. Our yard has 5 miles of road, the rest is farm machinery & parts. www.nyssatractor.com Toll Free (833) 372-4020 Nyssa, OR

BIG TRACTOR PARTS, INC. ~ GEARED FOR THE FUTURE ~ STEIGER TRACTOR SPECIALIST. 1. We are your source for new & used Steiger drivetrain parts Series 1-9300 Series. 2. We rebuild Spicer manual transmissions, Fugi power shift transmissions, dropboxes & axle with ONE YEAR WARRANTY! 3. We now rebuild computer control boxes for Steiger tractors 1982-1999. 800-982-1769 www.bigtractorparts.com

907 Nursery Equip. & Supplies

ECONOMICAL DURABLE EFFICIENT Oregon Valley Greenhouses. BUILDERS OF QUALITY GREENHOUSES WWW.OVG.COM * INFO@OVG.COM 503-678-2700 * AURORA, OR

GK MACHINE, INC SERVICE & REPAIR. We specialize in equipment modifications, upgrades, service and repair! www.GKRepair.com

APACHE SPRAYERS. Call Us Today for your FREE QUOTE! MORE BOOM FOR YOUR BUCK. Covering the Entire Willamette Valley Grauer Repair Service, Inc. Call us today! 503-843-3440