

# Don't Miss Another Issue of Capital Press!

Stay up to date on the latest agricultural and natural resources news.

ANYTIME ANYWHERE

1 year \$55

2 years \$100

EZ Pay \$4 month

### 824 Seed

**SUDAN GRASS:** cover crop seed. Also Cowpeas (summer Legume). Albany, OR. Text/ call 541-905-2111

Pasture Seed \$1.20/ lb. Lawn Seed \$1.20/ lb. Wheat Straw \$120/ ton. Grass Hay \$180/ ton. Wheat \$6/ bag. Rickreall, OR. 503-623-6922

### ALFALFA SEED

Quality VNS Alfalfa Seed: \$2.00/lb. Touchet, WA. Chris Kregger 509-394-2400

### 825 Fertilizer

Manure based organic matter soil amendment. Truck loads. Delivery Possible. Albany, OR. area. 503-871-9114



**POTENTGROW Organic Fertilizer**  
**AG SERVICES**  
 •Transportation  
 •Warehousing  
 •Chicken litter/ manure  
 •Organic fertilizer  
 •Hemp logistics  
 For pricing and freight quotes call/text 541-602-9477 or e-mail: info@potentgrow.com

**Line Classifieds Call Toll-Free 1-800-882-6789**  
 FAX: (503) 370-4383  
 CapitalPress.com

### GOT GYPSUM?

**PROVIDES** Essential Calcium & Sulfur  
**IMPROVES**  
 • Acidic Soil  
 • Soil Structure  
 • Water Filtrations  
**REDUCES**  
 • Run-off  
 • Erosion

**EMPIRE MINING Co.**  
 702-334-4669  
 775-600-5985  
 empireminingco.com  
 Conveniently Located to Serve the Tri-Cities  
 S200442-1

### 826 Organic

900 Bales of Organic Haylage: good quality, \$55/ bale. Scio, OR. 503-932-1005

**CERTIFIED ORGANIC Alfalfa**, 3x4 bales, 170-183 RFV. Triticale Alfalfa Mix. Othello, WA. 509-989-2141, 509-592-3499

**Certified Organic Grass Hay:** big bales, \$150 ton. Molalla, OR. 503-423-7663

**Organic Beardless Wheat**, 150 tons, 3 tie bales. Banned Stored. Macdoel, CA. 530-398-4010, 530-340-4899

### 835 Hemp



New: DeJong 32ft adjustable height conveyor. Great for hemp or Xmas trees, \$15,900. Amity, OR. 971+400-6162

2019 Orkel Dens X. Hemp Compactor/ Baler. \$415,000 OBO. Like New. Silverton, OR. 503-873-6774

2019 980 Claas Silage Chopper with 25ft Chamber head. 10ft pickup head. For sale or take over lease. Silverton, OR. 503-873-6774

### 887 Irrigation Equip.

### 835 Hemp

**BUYING HEMP biomass.** Must be 10% or more CBD. Silverton, OR. 503-873-6774

**New Holland FX28 Forage Chopper.** Great condition, 1600 hours, 4 row corn head, 8' grass head, \$65,000 OBO. Cornelius, OR. 503-341-4289



**Hemp Dryer** 12K capacity every 6 hours. 1 year old. Package deal with Hyster forklift and rotator, 10,000 pound scale and printer, \$145,000 OBO. Cornelius, OR. 503-939-4524

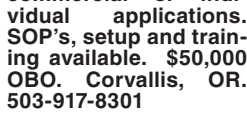


**Used- Ventco 40' Batch Style Dryer System.** Includes 5 Magazines. Capacity of 12,000 wet lbs (~4,000 dry lbs) per 20-hour production day and 600,000 wet lbs (~200,000 dry lbs) for a 50-day drying season. Each Dryer is equipped with a Neco 25 HP Centrifugal Fan Model 04CHA253 with 1750 RPM, 230-460 Volt, 3 Phase and a Neco Downstream Heater Model 05DSH-1LPM-V2 with burner rating of 2.6 btu. System has been used in production for 2 drying seasons and is designed for either commercial or individual applications. SOP's, setup and training available. \$50,000 OBO. Corvallis, OR. 503-917-8301

300,000 pounds of Hemp Biomass. Tested Pesticide Free. Sisters, OR. 541-771-4980, 541-771-4970

**Used Hazelnut Boxes** approximately 200 available. \$35 each OBO. Cornelius, OR. 503-341-4289

### 869 Livestock Equip. & Supplies



New IA 24' portable hay feeder with 8 hole wheels swing away tongue inner bunk with 35 outer station openings. Buy 2 or More For \$3,995 each. Bend, OR. 541-548-7185 mtcsales.net

**Livestock Panels:** 16' (6) rail, (3) brace, \$117 each. 12' panels, (6) rail, (2) brace, \$88. Bow gates, all lengths and sizes. These panels are new Green color, hundreds available. **Heavy 16' Feeder Panels**, \$330 each. La Grande, OR. 541-805-9279, 541-963-6258

### 872 Dairy Eq. & Supplies



**400 bu. • BUY OR RENT Call Scott at Barr-Tech** Compost/Organics Recycling Authorized Dealer of PIK RITE Spreaders 509-590-0437 www.barr-tech.net Sprague, WA 5174558-1

### 887 Irrigation Equip.

Cadman 3750XL hard-nose sprinkler reel, \$16,500. Rickreall, OR. 503-838-3740, 503-383-6722

**Pivots: All brands.** No rust. Plus buried wire. Call Keizer, OR. Cell 503-881-3232

### 875 Tanks & Storage



4500 Gallon Stainless Steel tank: 10' diameter, 14' tall. Tank walls, 8', cone bottom 1' deep. Steel frame is 3" tall. 4697 gallons to top of shell. 293 gallons in cone bottom, \$11,500. Dayton, WA. Cell: 509-990-5587, 509-382-4461, blarking@reagan.com

### 881 Shop Equip. & Tools



**GENERATORS:** Used, low hour takeouts, 20kW to 2000kW, diesel, propane, & natural gas. Cooperstown, ND. We ship nationwide. 701-371-9526 or 701-367-4305 abrahamindustrial.com

### 887 Irrigation Equip.



Westinghouse IRRIGATION/ HYDRANT PUMP assembly: 100hp, 480/277V, 3ph 1500 gpm, 150"Lx55"Wx45"H, soft start controller/ panel, \$6400 OBO. Ferndale, WA. 360-380-2907 sales@watertecna.com

### 878 Generators



### 872 Dairy Eq. & Supplies

**Germania Milking Parlor** double 12, rapid exit, herringbone style, \$10,000 OBO. Cloverdale, OR. 503-812-6360

Westward 40 gallon calf milk pasteurizer, 3 years old, \$6500. Onalaska, WA. 360-880-4803, 360-880-4813

### 875 Tanks & Storage



20,000 Gallon Flat Bottom Tank: 12'6" diameter, 22' walls. Interior coating is NSF Certified Coating for potable water, \$20,000. 509-990-5587, 509-382-4461, blarking@reagan.com

### (57) Used Pivots: Engines, pumps, Garden Valley, ID. Call Mike at 208-420-1480, or see www.pivotsplus.com

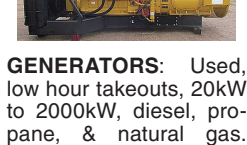


2", 3" and 4" irrigation pipe. PTO Berkeley Pump. 2" electric pump. Sedro Woolley, WA. 360-856-6210

### FUEL TANKS:

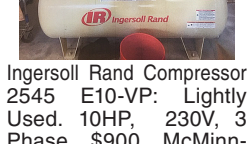
Used single wall tanks 1500 & 2000 gallons. New 1000, 2000, 3000 and 4000, etc. gallon double walled tanks. Salem, OR. Peter 503-881-9803

### 881 Shop Equip. & Tools



Ingersoll Rand Compressor 2545 E10-VP: Lightly Used. 10HP, 230V, 3 Phase, \$900. McMinnville, OR. 206-999-3041

### 890 Packing/ Processing Eq.



Used Super Sacks. Used once. Stovepipe Top: \$3. Opened Top: \$5. Salem, OR. 503-932-8598

### 896 Forklifts



Champ Forklift for parts. Model 350-80. Good engine and hydraulic system, good rubber, 30ft lift, 8000 lb unit. Has transmission problem, \$1500. Turlock, CA. Gary 209-606-3094

### 899 Heavy & Indust. Eq.



CAT D6C Dozer: angle blade with tilt cylinder, winch, arch, \$18,500. Terreton, ID. 208-663-4598 Leave Message

### 877 Irrigation Equip.

WANTED: irrigation main line, 5", 6" and 8" supply hydrants. Wade rain and/ or Ringlock. Salem, OR. or surrounding area. 503-437-4833

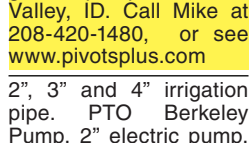
Drip Tube: .26gph at 30" centers, 350 rolls. 500 rolls of drip tube 12" spaced emitters suitable for blueberries. \$75 per roll. Lafayette, OR. 503-437-4833

### 877 Irrigation Equip.



NEW IA Pivot Track Closer. Heavy Duty with adjustable cone discs. From 60" to 12" width. Hydraulic Depth Control Roller, \$3595. Bend, OR. 541-548-7185 mtcsales.net

### 877 Irrigation Equip.

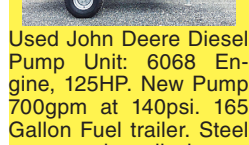


1980 CAT D8K dozer, Canopy, ripper, u blade, good undercarriage. \$42,500. Estacada, OR. 503-975-4324

### 877 Irrigation Equip.

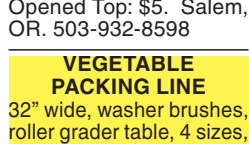


### 877 Irrigation Equip.



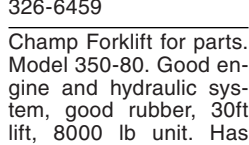
Used John Deere Diesel Pump Unit: 6068 Engine, 125HP. New Pump 700gpm at 140psi. 165 Gallon Fuel trailer. Steel gooseneck discharge. Murphy control system, \$23,960. Lynden, WA. WaterTec INC. 877-591-4790 sales@watertecna.com

### 877 Irrigation Equip.



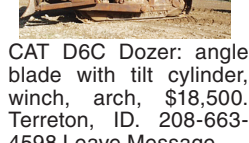
VEGETABLE PACKING LINE 32" wide, washer brushes, roller grader table, 4 sizes, VFD electrical, even flow tub. Excellent condition, \$15,250 OBO. Madera, CA. 559-352-1700

### 877 Irrigation Equip.



WANTED USED Hercules Motor, 230 cubic inch, running or rebuilt with fair compression. For Hyster Forklift. 707-326-6459

### 877 Irrigation Equip.



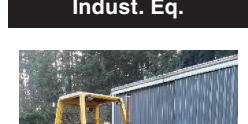
MASSEY FERGUSON 1160 with 232 loader, 4x4, 41HP Isuzu, 2200 hours, mower deck. Asking \$12,950. Sandy, OR. Call Pepe: 503-544-3232; Call Pat: 503-407-9062

### 877 Irrigation Equip.



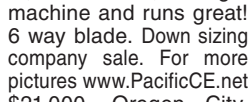
Buying or Selling Capital Press is here to help you! 1-800-882-6789 or FAX 503-370-4383 CapitalPress.com

### 899 Heavy & Indust. Eq.



John Deere 750 B Dozer, 9350 hours; but tight machine and runs great! 6 way blade. Down sizing company sale. For more pictures www.PacificCE.net \$21,000. Oregon City, OR. 503-329-0309

### 899 Heavy & Indust. Eq.



1980 CAT D8K dozer, Canopy, ripper, u blade, good undercarriage. \$42,500. Estacada, OR. 503-975-4324

### 899 Heavy & Indust. Eq.



2001 Sullair 185 CFM air compressor. John Deere Diesel. Low hours, well maintained and work ready, \$6500. Located in Twin Falls ID. Call 208-613-0050

### REPLACEMENT DECAL SETS

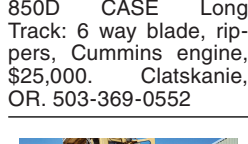
Construction, Forestry & Ag Equipment. Fast, Knowledgeable, Reliable Service. 215-536-5339 email: info@CustomServicesCompany.com Thousands of sets, Old & New, in our digital inventory. [www.QuipCal.com](http://www.QuipCal.com)

### 899 Heavy & Indust. Eq.



1965 Galion Grader. Great condition. 2377 Total, \$ 8750. Salem, OR. 503 559-3186, 503-362-3055

### 899 Heavy & Indust. Eq.



850D CASE Long Track: 6 way blade, rippers, Cummins engine, \$25,000. Clatskanie, OR. 503-369-0552

### 899 Heavy & Indust. Eq.



D-6 H U-dozer with tilt and ripper, near new engine and hydraulic pump, \$79,500. Salem, OR. 503-362-3055

### 899 Heavy & Indust. Eq.



CAT 305 Mini Excavator Blade, Steel Tracks, Thumb, 2 Buckets, 6000 Hours, Asking \$21,950. Sandy, OR. Call Pepe: 503-544-3232; Call Pat: 503-407-9062

### 899 Heavy & Indust. Eq.



CAT 305 Mini Excavator Blade, Steel Tracks, Thumb, 2 Buckets, 6000 Hours, Asking \$21,950. Sandy, OR. Call Pepe: 503-544-3232; Call Pat: 503-407-9062

### 899 Heavy & Indust. Eq.

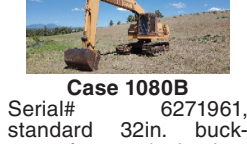
Pall Industries Leachate Treatment System, Water Treatment Plant. Reverse Osmosis. All filters, pumps, switch gear complete. Used at landfill to release treated water to river. Repurposers welcome, \$30,000 OBO Creswell, OR. 541-912-7807

### 899 Heavy & Indust. Eq.



**LMC 1500 Crew Cab Snowcat**, 4 cylinder, Auto, 5 seater, Asking \$18,950. Sandy, OR. Call Pepe: 503-544-3232; Call Pat: 503-407-9062

### 899 Heavy & Indust. Eq.



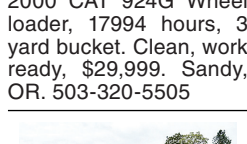
**Case 1080B** Serial# 6271961, standard 32in. bucket, 6ft. mud bucket, 30in. wide track, 6682 hours. Delivery is available. \$20,000. Likely, CA. 530-640-0237

### 899 Heavy & Indust. Eq.



**15H Bucyrus Erie Excavator:** \$4,500 OBO. Long Creek, OR. 541-786-4138

### 899 Heavy & Indust. Eq.



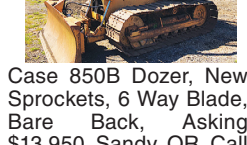
1997 CAT D3C: 6 way blade, custom brush rake, rippers, 3232 hours, good condition, \$29,000. Longview, WA. 360-751-9169

### 899 Heavy & Indust. Eq.



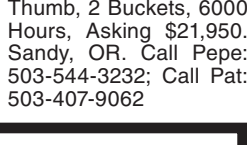
2000 CAT 924G Wheel loader, 17994 hours, 3 yard bucket. Clean, work ready, \$29,999. Sandy, OR. 503-320-5505

### 899 Heavy & Indust. Eq.



Hydro Ax #520: Original 453 Detroit. Well maintained. Extra blades, parts pump, factory winch. Can oscillate and articulate, \$23,000. Portland, OR. 503-201-7677

### 899 Heavy & Indust. Eq.



950 CAT loader, tires 70%, 4 machining tires, 3rd valve, GP bucket, \$14,500. Macdoel, CA. 530-398-4010, 530-340-4899

### 899 Heavy & Indust. Eq.



Case 850B Dozer, New Sprockets, 6 Way Blade, Bare Back, Asking \$13,950. Sandy, OR. Call Pepe: 503-544-3232; Call Pat: 503-407-9062

### 899 Heavy & Indust. Eq.



CAT 305 Mini Excavator Blade, Steel Tracks, Thumb, 2 Buckets, 6000 Hours, Asking \$21,950. Sandy, OR. Call Pepe: 503-544-3232; Call Pat: 503-407-9062



SUBSCRIBE TODAY!

**Capital Press**  
 EMPOWERING PRODUCERS OF FOOD & FIBER

1-800-781-3214  
 CapitalPress.com

**ERNST IRRIGATION**  
**GOT TRAVELERS?**

**NEW TRAVELERS:**  
 • 4"ID X 1400ft w/JD4045 engine and Cornell 3RB pump  
 • 4"ID X 1400ft w/8hp Honda Engine Drive  
 • 3.7"ID X 700ft w/5.5hp Honda Engine Drive  
 • 3"ID X 1100ft w/5.5hp Honda Engine Drive

**Ask About USED MACHINES in Stock**

[www.ErnstIrrigation.com](http://www.ErnstIrrigation.com) • (503) 633-1111  
 20179 Main St., St. Paul, OR 97137 • Mon-Fri 8am-5pm; Sat 8am-2pm

**BigIRON HEAVY EQUIPMENT and AG REPAIRS**  
 Complete Mobile Repair Services  
**- PORTABLE LINE BORING -**  
 Scott & Eddy Carrol • 509-770-5560  
 BigIronRepair@odessaoffice.com

**R & G MACHINING AND ENGINE PARTS**  
 COMPLETE DIESEL MACHINE SHOP AND TRUCK REPAIR  
 MULINO, OREGON • SHOP: 503-829-6038 • NATIONWIDE: 1-800-823-6038  
 We Absolutely, Positively Have The Best Remanufactured Engines Available Anywhere!  
 Huge Inventory • Expert Technical Assistance

REBUILT INJECTORS EXCHANGE		REBUILT DIESEL L/B ENGINES	
6.0 P/S '03-'07 Set.....	6.7 C/R '07 & Up Set.....	3.9 CUMMINS.....\$3,395	MITSUBISHI & NISSAN Starting at.....\$5,995
5.9 '03-'07 Set.....\$1,799	GM - DURAMAX 6.6 LB7 '01-2004.5 Set.....\$2,299	5.9 '88-'02.....\$3,695	YANMAR & KUBOTA Starting at.....\$4,495
6.4 P/S '08-'10 Set.....\$2,199	LBZ '06-2007.5 Set.....\$2,199	6.7 C/R.....\$4,195	BOBCAT & SHIBAURA Starting at.....\$3,995
6.7 P/S 2011 & Up Set.....\$2,499	LGH 2011-2016 Set.....\$2,499	6.6-7.8.....\$6,995	DOOSAN & TAKEUCHI Starting at.....\$5,995
7.3 P/S '98-'03 Set.....\$1,6			