

**923 Farm Equipment**

**WANTED TO BUY:** John Deere telehandler in good condition. Call or text 509-607-0747

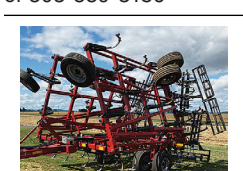


**Galvanized Decking** 36" Lx9" Wx1.5" d. Large quantities available. \$10 each. Davenport, WA. 509-721-0120

Pall Industries Leachate Treatment System, Water Treatment Plant, Reverse Osmosis. All filters, pumps, switch gear complete. Used at landfill to release treated water to river. Repurposers welcome, \$30,000 OBO Creswell, OR. 541-912-7807



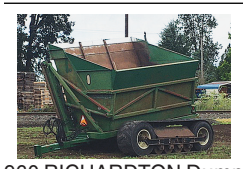
Woods Brushbull 60" mower. Like new, \$2350. Salem, OR. 503-362-3055 or 503-559-3186



Like New CASE Tiger Mate 255 Field Cultivator with harrow and hydraulic rolling basket. 28". Silverton, OR. 503-932-8006



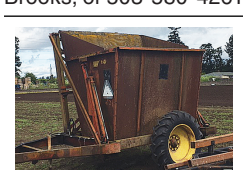
**Jay's EQUIPMENT SEAT COVERS** PROTECT YOUR SEATS  
Equipment Seat Covers Fits: Tractors, Forklifts, Loaders, Backhoes, Skid Steers, Excavators, Semi Trucks, More. 541-401-5933 EquipmentSeatCovers.com



960 RICHARDTON Dump Cart on tracks. 12' dump box with lift and dump cylinders, \$35,000 Brooks, OR. 503-580-4261



JOHN DEERE 980 S-tine field cultivator. 22', walking beam axles, rear hitch with hydraulics, and leveling harrow with rolling baskets, \$14,500 Brooks, or 503-580-4261



8' Farm Hand Dump Box. New tires and hoses. \$4500 Brooks, OR. 503-580-4261



**Portable Toilet Trailers** GGAP Compliant Single or Double Trailers B&L Fabrication, LLC 503-932-3498 www.bnlfab.com Salem, OR.



NEW IA Tandem and Offset Wheel Discs. 9ft: \$4995. 11ft: \$5995. 12ft: \$5795. 13ft: \$995. Bend, OR. 541-548-7185 mtcsales.net



NEW IA Hydraulic Box Scrapers with hydraulic lift. LD 10ft, \$2550; LD 12ft, \$2750. HD 10ft, \$3695; HD 12ft, \$3995. Bend, OR. 541-548-7185 mtcsales.net

**923 Farm Equipment**

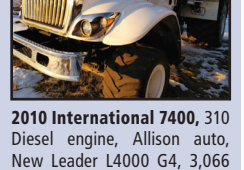
Farm Implements: **John Deere 4200** rollover plow, \$2350. **Single row Transplanter**, \$3850. International 12.5ft **Vibra Shank**, \$1400. **Remco 30ft** spray boom holder, \$900. Gervais, OR. 503-780-3785

**SuperSplit Kinetic Log Splitter:** Make firewood production more efficient and cost-effective. OWC is your local distributor. Choice of gas or electric, standard or HD models. Call for pricing. Gaston, OR. 888-800-1192

**GREYN FERTILIZER SUPPLY**



Case 921E Loader, Cummins diesel. 5430 hours. Incredible loader big bucket. Like new tires. \$88,000



2010 International 7400, 310 Diesel engine, Allison auto, New Leader L4000 G4, 3,066 hrs. \$88,000



2014 Case IH Titan 4530 3 Bin, 1863 hrs, 70 ft. \$142,500  
2014 Case Titan 4530, 3 bin, 5006 hours. \$98,500



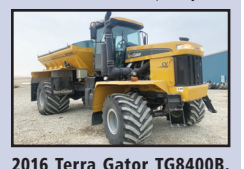
2011 Case IH 3520 3 Bin, 3128 hours, Viper Pro Trimble 750, Very nice truck. \$109,000



4560 Willmar Wrangler Loader, 1276 hours. Sold with Bucket and Forks. \$29,500



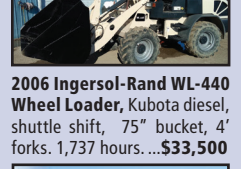
2013 Merritt Rapat Conveyor Trailer. Air Ride, Electric Roll Tarp. \$44,500



2014 RoGator RG 1300 with New Leader G4 bed, 3220 hrs. \$112,000



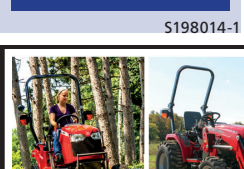
2016 Terra Gator TG8400B, 1,662 hours. New Leader L3220 G4, belt/chain. Viper Pro. \$139,500



2000 Caterpillar 924G High Lift Wheel Loader, 13,095 hours. \$33,500



2006 Ingersol-Rand WL-440 Wheel Loader, Kubota diesel, shuttle shift, 75" bucket, 4 forks. 1,737 hours. \$33,500



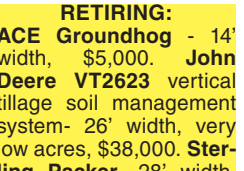
For a complete selection, visit us at [www.fertilizer-equipment.net](http://www.fertilizer-equipment.net) 406-466-5356 Choteau, MT

**923 Farm Equipment**

**Back Hoe:** 3 point hitch mount. Heavy Duty. Good condition, \$3000. Long Creek, OR. 541-786-4138



**RELOCATING-Huge CLEARANCE Sale:** IH 1470 Hillside combine, \$12,900. Several John Deere Grain Headers. John Deere 1207 mower conditioner \$1950. 6 disk Lely mower, \$1950. Brush hog rotary mower, \$2250. Case IH 8370, \$3750. Plows (all sizes), several off-set discs 15'-28", disc mowers, grain drills, blades, manure spreaders, tandem axle manure spreader, rototillers, combine weed headers, etc. Lots of hay equipment. Everything Farm Related! EVERYTHING MUST GO! RICKREALL, OR. 503-838-3740, 503-383-6722



**Eversman 1200 Land Leveler**, \$5000. Puyallup, WA. 253-848-7274

**RETIRING- ACE Groundhog - 14' width**, \$5,000. **John Deere VT2623** vertical tillage soil management system- 26' width, very low acres, \$38,000. **Sterling Packer- 28' width**, 18ft center section, usable without wings, low acres, \$10,000. **Connell, WA.** Call/ text 509-282-2355



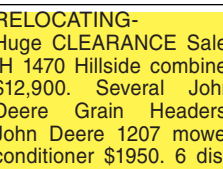
10 MODELS/SIZES • RENTAL OPTIONS • MADE IN USA • MANURE & COMPOST • HEAVY DUTY DESIGN



AUTHORIZED DEALER OF PIK RITE SPREADERS. 509-590-0437 • [www.Barr-Tech.net](http://www.Barr-Tech.net) • Sprague, WA

**923 Farm Equipment**

**Barber Fertilizer Spreader**, 20ft folding type, needs repair, \$125. Yamhill, OR. 503-437-5048, 503-662-3701



**1-800-OK-2-RENT** Rent or Sale Containers and Trailers

**CONTAINERS: 20' & 40'**  
**TRAILERS: 27', 40', 45' & 48'**

**Western Mobile Storage**  
1-800-652-7368 • 541-342-1835  
Eugene, OR

**IT'S TIME TO SELL**  
If you want to sell your equipment for the best value, give DaweCo a call!

WEEKLY ONLINE AUCTIONS  
AuctionTime.com

CONSIGNMENT SALES • APPRAISALS



[www.daweco.net](http://www.daweco.net)  
**509-315-4793**

**Ask about our Rental/Purchase/Consignment Program.**

It includes 100 hrs of use per month. Free delivery to the Treasure Valley.

**Combines/Harvesters/Sprayers**

2013 JD 5680 Combine, 1366 hrs. \$89,000  
2008 JD 9770 STS, Good Cond., Auto Track Ready, 2,878 hrs. \$49,000  
2013 JD 5670, 1680 hrs. \$89,000  
2012 JD 5690 Combine 1893 hrs. \$95,000  
2015 JD R4038 Sprayer 120' Boom, 20" Spacing, 1943 hrs. \$149,000  
2015 JD R4030 Sprayer w/2630 Display, 1,097 hrs. \$135,000  
2014 JD 4630, 80 Ft. Boom, 15" Spacing, 1,585 hrs. \$89,000

**Tractors**

JD 5400, 4834 hrs. (In Harper, OR) \$10,000  
2016 JD 7210R MFWd, IVT, 2400 hrs. \$110,000  
2015 JD 6175R 480/85r46 tires, 3200 hrs. \$85,000  
2015 JD 6175R IVT New Tires, 3698 hrs. \$85,000  
2013 JD 7280R MFWd, IVT 4900 hrs. \$89,000  
2012 JD 7280R IVT 5200 hrs. \$75,000  
2013 JD 7200R Rear PTO, Duals, 3200 hrs. \$79,000  
2016 JD 7210R IVT 320/90r54 duals, 3,127 hrs. \$89,500  
2014 JD 9360R 3 pt, 6,855 hrs. \$85,000  
2017 JD 8345RT Ext. Warr., 3,557 hrs. \$149,000  
2013 JD 6150R 20 spd., 4,500 hrs. \$69,000  
JD 8420T Good Cond., 11,147 hrs. \$35,000  
2002 SUNFLOWER 8781 Grain Cart. \$15,000

**Containers For Sale**  
20' and 40'

REFRIGERATED CONTAINERS AVAILABLE



**Portland Container**  
9449 N. Burgard Way, Portland OR  
Call Alan Conner (503) 286-1767  
or 1-800-788-5159  
[boxsales@pdxcontainer.com](mailto:boxsales@pdxcontainer.com)  
(Credit Cards Accepted) \$197169-1

**FARM & HOME SUPPLY**

1-888-643-3395 • 509-843-3395  
[www.fhsupply.com](http://www.fhsupply.com) Pomeroy, WA

NEW KIOTI PX1153 Tractor, Power Shuttle, cab & self-leveling loader, 115-hp. CALL

NEW KIOTI RX7320 Tractor Power Shuttle, cab & self-leveling loader, 73-hp. CALL

2015 Case IH 8240H Combine, Hillco leveler, 1,500 sep. hrs. \$299,950

2015 MacDon 40' draper header. \$75,750

New Great Plains 3000 Turbo Max/Harrow. CALL

1991 Case IH 7120 4 wheel drive tractor, w/alled 795 hi lift loader, 96" Qa bucket. \$27,500

Case IH 3020 Header Ready, Nice Cart w/Brakes. \$15,500

28' Donahue Machinery Trailer. \$2,000

'89 JD 7722 Combine, 25' header. \$14,950/OBO

1998 CASE IH 9370 QUADTRAC, 2 NEW 30in. tracks \$35,450

Schulte Mower 5026. RENT OR LEASE

NEW Schulte FX-530 30' Rotary Cutter. CALL



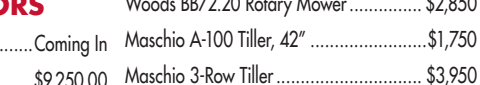
\$159946-1

**MERIDIAN EQUIPMENT**

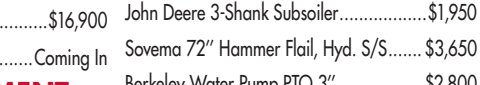
Serving the Pacific Northwest Since 1973



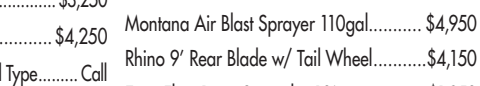
**John Deere Z44-5, Zero Turn Mower**, 48" Deck, Power Bagger \$3,500



**New Holland 1412 Disc Mower** Conditioner, 10ft Cut, Nice Machine \$10,500



**New Holland Boomer 4055** Cab w/AC, 4WD, 3pt., 540 PTO \$18,995



**US Trailer 40ft Gooseneck**, tandem, vacuum ovr hyd brakes \$4,500

[www.meridianeq.com](http://www.meridianeq.com)  
360-398-2141 • Bellingham, WA

**923 Farm Equipment**

**John Deere 6622 Hillside Combine**, grass seed header, belt pickup. Good condition, 4823 hours, good tires. Silverton, OR. 503-873-0217

**923 Farm Equipment**

**Rears Sprayer:** 100 gallon skid. Electric reel, electric start. Pumps 600PSI. 100ft hose. Runs great, \$2500. Winchester, OR. 541-673-0085

**923 Farm Equipment**

**CASE 810 Grain Header**, fits 1680 Case combine, \$750 OBO. **Rears Dry Fertilizer spreader box**, \$2500 OBO. Harrisburg, OR. 541-554-5072

**IF YOU HAVE A BEEF -** sell it in next week's Capital Press!

**Harrows, Rollers, Cultipackers, Scrapers, Buggies & More**

Made in Oregon  
FREE set of Pioneer breakaways with your custom equipment order by August 31, 2020



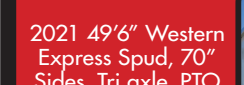
**Heavy Harrow**  
CUSTOM EQUIPMENT MANUFACTURING  
503-586-4564  
[heavyharrow@live.com](mailto:heavyharrow@live.com)  
[heavyharrow.com](http://heavyharrow.com)



2021 49'6" Western Express Spud, 70" Sides, Tri axle, PTO and Electric, Weight 14,420  
**Price on Request**

**WESTERN TRAILERS**

[WWW.WESTERNTRAILER.COM](http://WWW.WESTERNTRAILER.COM)  
ALL TRAILERS IN STOCK & READY FOR DELIVERY!



2015 49'6" Western Express Floor Airride, Aluminum Wheels, Air Scales \$52,750



2006 48' Western Elite Flatbed, Sliding Rear Axle \$14,900



2020 Western R-Tac Hopper Set, Airride, Alum. Wheels, Air Scales, Weight 14,600  
**Price on Request**



**Ray Brothers Equipment**

(208) 880-6344 • Call or Text Chris  
Ironsides, OR • Financing Available!  
[www.ray-brothers.com](http://www.ray-brothers.com)  
Email for more info  
[CHRISRAY@RAYBROTHERS.NET](mailto:CHRISRAY@RAYBROTHERS.NET)

**EQUIPMENT**

[www.sseqinc.com](http://www.sseqinc.com)

**PASCO, WA**  
(509) 547-1795

**QUINCY, WA**  
(509) 787-3595

**OTHELLO, WA**  
(509) 488-9606

**HERMISTON, OR**  
(541) 567-3001

**LA GRANDE, OR**  
(541) 963-8144

**ALBANY, OR**  
(541) 757-8112

**BALERS - LARGE SQUARE**

**SPECIAL USED BALER FINANCING**  
\*TRADE-IN UNITS ONLY! 0% 48 Month OAC

NH 340PLUS, 2017, single axle, 20,100 bales. \$79,900  
(13) NH 340s, 11,612-35,699 bales. \$45,000-\$84,900  
CaseIH LBX432, 2006, single axle, 43,370 bales. \$25,900  
NH 340s, 2017, 13,000 bales, tandem axle, bale case extension, nice!! \$83,900  
NH BB9080, 2011, 17,000 bales, single axle. \$52,900  
NH BB9080, tandem axles, 27,554 bales, recently gone through. \$50,000  
NH BB960A, 2008, 34,843 bales, tandem axle!! \$29,900  
NH BB960A, 2004, 39,306 bales, shedded, recently gone through. \$28,900  
NH BB960A, 2004, 55,393 bales, lots of new parts. \$25,000  
(6) JD L340s, 8,000-23,984 bales. \$59,000-\$79,000  
Hesston 4910, 4x4, roller chute. \$8,900  
Hesston 4790, 2000 model, 39,200 bales, new time bars & bearings. \$32,000  
Hesston 4790, 2000, 56,840 bales. \$21,900  
Phiber V5120 Accumulator, very little use. \$18,000  
(2) Krone BP1290, 2013, tandem axle, 54,889 & 55,483 bales. \$29,000 ea.

**BALERS - SMALL SQUARE**

NH BC5080, 2009, 16x18 commercial duty, very low bale count. \$24,900  
NH BC5080, 2016, very well maintained. \$22,900  
(8) NH 580s, 16x80 commercial duty. \$7,900-\$15,900  
Hesston 4655, good shape. \$10,500  
JD 467, 16x18. \$6,000

**BALEWAGONS/STACKERS**

NH 1048, lots of upgrades...too many to list. Please call. \$11,900  
NH 1075, 1095 monitor!! new front tires, gas, nice unit. \$31,900  
(3) Pro-Ag 16K, call for details. \$49,900-\$72,000  
Mistak 1030, 2019 model, barely used. \$20,900

**SWATHERS**

**SPECIAL USED SWATHER FINANCING**  
\*TRADE-IN UNITS ONLY! 0% 48 Month OAC

NH HW320, 2004, call for details. \$29,000  
NH HW365, 2007, 2,790 hours. \$47,900  
NH H8080, 2008, 4,565 hours, 750HD header w/tight cutterbar. \$49,900  
NH Speedworker 260, 2015, only 706 hours, 416 header. \$115,000  
NH HW365, 2005, 3,553 hours, 2355 header w/ good cutterbar, extra parts header too. \$42,000  
NH 2550, 1995, HS16 header with really good rolls!!! \$23,700  
NH 2450, 1993, 2214 header, 4,108 hours. \$14,900  
NH 1499, 12' rola-reel header. \$12,500  
NH 1431 discbine hydroswing, 2005, 13' cut. \$13,900  
MF WR9770, 2012, 1,509 hours, 16' header, double conditioner. \$79,900  
NH H8080, 2008, 1,745 hours, deluxe cab, HS14 header w/ like new B & D crusher rolls. \$74,900  
NH H8040, 2010, 1,912 hours, deluxe cab, HS14 header w/ like new B & D crusher rolls. \$52,900  
NH 2550, 1997, 3,968 hours, 2300 14' header. \$16,900

**RAKES**

Kirchner H-2 fluffer, 2019, pull-type, hydraulic drive, like new. \$5,200  
NH H5980 wheel rake, commercial. \$49,900  
(7) NH 216's, \$8,370 to \$15,900. Call for more details please.  
NH 144 window inverter, very good shape. \$4,370  
Allen 8827, 2000 model. \$9,900  
Allen 8827, 2000 model. \$9,600  
Darf 917, 2017, all hydraulics, nice unit. \$14,900  
H & S Hay Machine II, 2013, very little use. \$9,000  
LMC 8603, 2009, HD overhead wheel rake. \$9,900  
LMC 8603, 2012, darf style commercial 30'. \$11,900  
LMC 8603, 2012, darf style commercial 30'. \$13,900  
Rowse High Capacity 20'W, 30', hydraulic, dual wheel, LIKE NEW! \$21,000

Sitrex Pro-17 Commercial wheel rake, 2013, like new. \$22,500  
Twinstar 2027, 5 bar, third tires. \$13,500

We are a full line dealer for SUPREME-SEGUE-ROTIMIX MIXERS/TUB GRINDERS

Supreme 900T, 2012, new knives, RH dogleg conveyor. \$35,000 \$30,000  
Rotomix 1355A stationary, 2014, rear door, good shape. \$50,000

**ORCHARD/VINE**