

905 Antique Farm Eq. & Parts

1952 Farmall Super M: runs good, lots of new parts, \$1500 OBO. Molalla, OR. 971-404-4575

BEST SELLERS...
...The phone rang off the hook. Vanveldhuizen Dairy - Turner, OR Call and list your BEST SELLER!
1-800-882-6789

905 Antique Farm Eq. & Parts

(2) Farmall Super As. (1) Farmall B; Ferguson TO30. All Complete. Very restorable. Original manuals/ parts list, plus extras. \$6000 for all OBO. Coos Bay, OR. 541-808-0560

905 Antique Farm Eq. & Parts

(2) Fairbanks Morse, (1) Stover, (1) John Deere, (2) McCormick Deering hit and miss engines. (1) heavy duty antique drill press. Long Creek, OR. 541-786-4138

1940s D2 CAT: hydraulics, no blade, \$5000. 1950 International Super A with assorted cultivators, \$2500. Gervais, OR. 503-780-3785



John Deere 440IC, \$8500. Ford 8N Tractor, \$3000. Many new parts. Start, run and operate as they should! Astoria, OR. 503-325-2930; mikeagalzoff@gmail.com

907 Nursery Equip. & Supplies

FRESH SAWDUST: Consistently fair pricing, 9 Unit Loads Now Available Forest-Grove, OR. For pricing call 503-849-0216

USED NURSERY CONTAINERS:

Used, but reusable nursery containers. All sizes. Inventory changes daily. Call for current availability and prices. Sawyer Farms, Scio OR. 503-769-3417. judsfarm@wvi.com (also wanted: used containers)

911 Hay Equip.

Vermeer 2800 fully hydraulic basket rake, barely used. Like new condition, \$23,000. Domries 16ft ring roller, \$5000. Athena, OR. 775-293-7297



1993 Manteca hay squeeze. Good working condition, \$75,000 OBO. Grandview, WA. 509-945-3015

2006 John Deere 567 Round Baler. EXCELLENT CONDITION. Always shedded. \$20,000. Loomis, WA. 509-429-0760



"New" Mil-Stak PT 2150 Bale Stacker. Stacks (8) 4x4 bales, (12) 3x4 bales, (18) 3x3 bales, \$99,500. Fruitland, ID. Call/ text Chris 541-810-8007

New Holland 320, 18"x16" bales, \$1800. New Holland Mower Conditioner 461, 9ft width, \$900. Antique hay rake, with iron wheels. Works great! \$500. Forest Grove, OR. 503-357-1807

911 Hay Equip.

Baler, New Holland 575, shedded, hydraulic tensioner, 1/4 turn chute, \$7500 OBO. Enumclaw, WA. 360-825-6548



Used, like new condition, New Holland 570 Baler. Recent tune up and repairs, \$11,500. Boring, OR. Call or Text for details. 503-936-0822



3 point Darf 15 wheel hydraulic rake. Extension and retraction. Angle in and out. Wheels raise and lower, \$1500. Pasco, WA. 509-521-4828



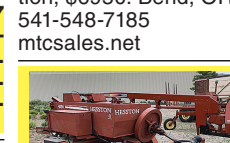
2015 New Holland BC5070 Square Baler, \$25,400; Hay sower, \$7000. Discbine H7220 with conditioner, \$25,900. Silres HM/300 tedder, \$4,390. All: \$60,000. Salem, OR. 503-559-8355

CASE LBX432 Baler: roller chute, flotation singles \$35,000. Klamath Falls, OR. 541-891-3326

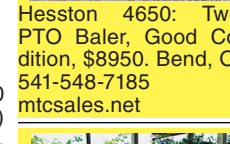
Large Supply of Rebuilt New Holland Bale Wagons: Also buying New Holland bale wagons. Sod Busters Sales, Polson, MT. 406-883-2118



New Holland 1032 Pull Baler wagon. Self contained hydraulics, auto tie, 2 wide, Good condition, \$6950. Bend, OR. 541-548-7185 mtcsales.net



Vermeer Rake. Brand new used one season. Krone Baler 1290 BiG Pack and Bale Stacker Bale Skoop HD4SR. Packaged Deal. Make an offer. Jefferson, OR. 541-327-1645



2008 New Holland 1411 discbine. 8 cutting discs, with Chevron rolls. Cuts 10'6". Rebuilt gear box, new knives. Very good condition, \$10,500. Roseburg, OR. 541-610-3900

RETIRING: HAY RAKES: (3) Twinstar 2030- Rakes double frame, \$13,000. (3) Harrell 8827: 12' Twinstar baskets, \$10,000. 12' Baskets, new teeth, extended frame, \$4,000. 10.5' Twinstar baskets, extended frame, \$4,000. **JOHN DEERE WINDROWER SWATHERS:** R450- 500R head, 1455 tractor hours, 1093 header hours, \$85,000. 4990- 995 16ft head with all Hay tools conversions equal to 500R head, 6411 tractor hours, low hour header, \$28,000. 4990- 995 16ft head with all Hay tools conversions equal to 500R head, 4332 tractor hours, low hour header, \$32,000. **BIG BALERS:** (4) KRONE 1290 Big Packs- Serial #KBP12773090, 56000 bales, \$25,000. HDP HS- Serial #BP2Z933934, 9000 bales, \$95,000. HDP HS- Serial #KBP12885108, 25054 bales, \$60,000. HDP HS- Serial #KBP12874921, 27284 bales, \$50,000. Connell, WA. Call/ text 509-282-2355

#1 Balewagons: Buy, Sell, New Holland 2&3 wide self-propelled, pull-type models, parts, tires, manuals. Caldwell, ID. 208-880-2889 www.balewagon.com

911 Hay Equip.

Freeman 370 baler: 15 inch bales, \$20,000. New Holland HW 320 Swather with extra header parts, \$17,500. Allen 8827 5 function rake \$2,500. Adin, CA. 530-260-1251

Hesston 1340 pull type Swather, 15ft, \$2500. Terrebonne, OR. 541-419-8370



Gehl 1710: 540 PTO, 5'x6' roll baler, flotation tires, bale bumper, hydraulic tie. Bales hay or haylage. Good Condition, \$6950. Bend, OR. 541-548-7185 mtcsales.net

2019 Roadrunner Hay Squeeze: Like new, excellent condition. 3 stage mast, \$189,500. Rickreall, OR. 503-930-1904

John Deere 5830 Chopper. Forest Harvester, \$30,000. New Holland 1440 Mower Conditioner, \$10,000. Cloverdale, OR. 503-812-6360

New Holland 216 Double Hay Rake, \$5000. Corvallis, OR. 541-740-2134



Claas Volto 1100 Tedder, 10 basket, hydraulic fold. Excellent shape. Silverton, OR. 503-932-8006

New And Used Parts: for all models New Holland bale wagons. Largest Inventory in North America. Sod Busters Sales, Polson, MT. 877-735-2108 or 406-883-2118

2002 New Holland 1089 bale wagon, 3500 hours. Nice condition, \$85,000. 2002 New Holland 1089 bale wagon, 1,652 hours. Sharp, \$95,000. Polson, MT. 877-735-2108, 406-249-8565

Vermeer Rake. Brand new used one season. Krone Baler 1290 BiG Pack and Bale Stacker Bale Skoop HD4SR. Packaged Deal. Make an offer. Jefferson, OR. 541-327-1645

2008 New Holland 1411 discbine. 8 cutting discs, with Chevron rolls. Cuts 10'6". Rebuilt gear box, new knives. Very good condition, \$10,500. Roseburg, OR. 541-610-3900

RETIRING: HAY RAKES: (3) Twinstar 2030- Rakes double frame, \$13,000. (3) Harrell 8827: 12' Twinstar baskets, \$10,000. 12' Baskets, new teeth, extended frame, \$4,000. 10.5' Twinstar baskets, extended frame, \$4,000. **JOHN DEERE WINDROWER SWATHERS:** R450- 500R head, 1455 tractor hours, 1093 header hours, \$85,000. 4990- 995 16ft head with all Hay tools conversions equal to 500R head, 6411 tractor hours, low hour header, \$28,000. 4990- 995 16ft head with all Hay tools conversions equal to 500R head, 4332 tractor hours, low hour header, \$32,000. **BIG BALERS:** (4) KRONE 1290 Big Packs- Serial #KBP12773090, 56000 bales, \$25,000. HDP HS- Serial #BP2Z933934, 9000 bales, \$95,000. HDP HS- Serial #KBP12885108, 25054 bales, \$60,000. HDP HS- Serial #KBP12874921, 27284 bales, \$50,000. Connell, WA. Call/ text 509-282-2355

#1 Balewagons: Buy, Sell, New Holland 2&3 wide self-propelled, pull-type models, parts, tires, manuals. Caldwell, ID. 208-880-2889 www.balewagon.com

911 Hay Equip.

Small Bale Hay Grapple, fits Farmhand F11 loader, \$1500. Long Creek, OR. 541-786-4138

New Holland 1095 Bale Wagon: 3 tie bale chute and Mil-Stak bale clamp, stored under cover, 5025 hours, good condition, \$48,000 OBO. Dallas, OR. 503-580-8943

John Deere 468 16x18 twine baler. Field ready. \$6500. Sisters, OR. 541-771-4970

RCO Baits
Gophers • Squirrels
Voles • Moles
Dealer Locator
1-800-214-2248
Harrisburg, OR \$160799-
Discount

PRESERVOR HAY TREATMENT
THE SHIELD OF IBA QUALITY AND YIELD

Available in Oregon & SW Washington from NW Animal Supply

- Combats Shattered Leaves
- Stop Heating & Mold
- Hay Moisture 15 to 30%
- Not Propionic Acid
- Patented Potassium Sorbate Formula
- Will Not Rust Metal
- No Offensive Odor or Flavor

Find Product Info: **IBA-USA.com**
GEORGE SAUL
GASTON, OR
503-985-1001

917 Orchard/ Vineyard Equip.



Jessee Machine Works: **NUT HARVESTING EQUIPMENT**
530-342-4379
JesseeMachineWorks.com

Used Hazelnut Boxes approximately 200 available. \$35 each OBO. Cornelius, OR. 503-341-4289



Case 310 Agricultural Crawler Tractor: 3 point hitch, good hydraulics, rebuilt engine, PTO, good tracks, 51" wide. Grape guards for tracks; hydraulic vine trimming shears. Original manual from 1958 -1964. Works great on hillsides and tight, head-pruned vineyards, \$10,750. Underwood, WA. Call 510-527-3675

Rears Sprayer: 100 gallon skid. Electric reel, electric start. Pumps 600PSI. 100ft hose. Runs great, \$2500. Winchester, OR. 541-673-0085

Looking for **ORCHARD/ VINEYARD PROPERTY?**
Go to Class. 570

Capital Press
CapitalPress.com
5159454-1

920 Tractors

Attention: Wanted Kubota or John Deere, 4x4 compact tractor with loader/ equipment. Carlton, OR. 503-550-0094

911 Hay Equip.

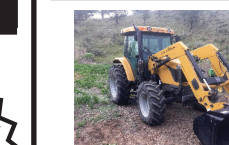
920 Tractors



1989 Case IH 7110 Diesel Tractor. 7183 hours, 400 hours on new motor by Ag West, power shift, 135HP, duals, new set of front tires, 540/1000 PTO, \$34,459. Culver, OR. 541-480-8739

John Deere 4030 5257 hours, Synchro transmission, bolt on duals, new front tires, new rear tire, cab, heater and ac work, 2 remotes, runs great, \$16,000 Klamath Falls, OR. 541-591-0746

2002 New Holland TS100 Tractor: MFWD, FEL with grapple, all new tires, 5,182 hours, nice \$32,500. Polson, MT. 877-735-2108, 406-249-8565



2011 Challenger MT445B loader tractor with bucket, 95hp, 548 hours, 4.4 turbo diesel with Tier III, 4x4, powershift 4x4 with 16 forward and reverse gears, good tires. Asking \$49,500 OBO. Kimberly, OR. Possible delivery Call 541-934-2205 or text 541-604-4654 Dallas or David.

WANTED: 1550 Oliver Tractor. PTO unit complete or parts. 503-437-5048; 503-662-3701



Kubota M108 S: LIKE NEW. Only 239 hours. \$47,500 or reasonable offer. H&S Spreader Model MSH 425 Hydra Push. Like New, \$29,500. Would like to sell together. Mt. Angel, OR. Call or text Rick/ Dave 503-991-1361

RETIRING John Deere Tractors: 8530- 5418 hours, duals front and back, independent front axle, \$122,000. 8420- 5563 hours, new front rubber, \$75,000. 8520- 10,580 hours, 500 hours on rebuilt engine, new transmission at 8000 hours, flotation rubber, \$68,000. 8400- 9920 hours, Michelin Agri-Bib tires, \$55,000. 8400- 7250 hours, \$50,000. 4640- 10830 hours, with duals, \$18,000. 6125R- 5565 hours, \$48,000. 6400- 6270 hours, \$26,000. Steiger Bearcat III ST225 tractor, 5071 hours, extra weights, \$7,000. Connell, WA. Call/ text 509-282-2355

2012 Case 7088 Combine: 2669 engine hours; 2125 separator hours, 4WD. Straw chopper, chaff spreader, Gordon sieves. Wheat and Corn sieves; concaves. GPS ready. 520/85R42 dual front. One owner. Always stored inside. Excellent condition, \$87,500. Central, WA. Call or text Chris: 541-810-8007; www.berrymachinery.com

1982 John Deere 6622 Hillside Combine. 3,828 hours. John Deere 222 platform and Vortex Air Reel. Manuals and repair records. Platform always stored under cover. Last used 2004 harvest. Refrigerant R22 converted to 134A, grain loss monitor, one front tire sectioned, others good. 1998 header cart trailer ball hitch and adjustable 20 to 30ft platforms. 1976 John Deere 8430, 4-wheel drive, articulated tractor, purchased new. 30 series rebuilt engine. Needs high-low clutch. AC converted to 134A Refrigerant. Approx. 6,711 hours. Have all records. Goldendale, WA. 541-980-4635

923 Farm Equipment

New Holland FX28 Forage Chopper. Great condition, 1600 hours, 4 row corn head, 8' grass head, \$65,000 OBO. Cornelius, OR. 503-341-4289

"Thanks! Very effective ad!" William Krieg - Portland, Ore. Call 1-800-882-6789 to advertise.

920 Tractors



Branson TRACTORS

24 - 80 hp., 4WD, Compact Syncro-Shuttle, Hydro 24, 28, 35, 47 hp

THE TRACTOR STORE

(541) 342-5464
5450 W. 11th, EUGENE, OR

923 Farm Equipment

2016 Dion pull type forage harvester (chopper) with a 2019 corn/ hemp head, 150 hours on corn/ hemp head, extended chute for easy loading into a trailer or dump cart, \$65,000. Salem, OR. 503-580-4261

2019 International 1026 Tractor, hydro trans., cab.....\$17,000
12' Brown Bear Compost Turner, 3pt PTO driven. Excellent condition \$15,000 \$12,000
JD 540 Loader \$6,500
JD 145 Loader..... \$3,500

GET 'EM AT FARMLAND NOW!

Farmland Tractor Supply
Tangent, Oregon
877-928-1646
541-928-1646
32427 Old Hwy. 34
Tangent, OR 97389

BIG TRACTOR PARTS, INC.
~ GEARED FOR THE FUTURE ~

STEIGER TRACTOR SPECIALIST

1. We are your source for new & used Steiger drivetrain parts Series 1-9300 Series.
2. We rebuild Spicer manual transmissions, Fugi power shift transmissions, dropboxes & axle with ONE YEAR WARRANTY!
3. We now rebuild computer control boxes for Steiger tractors 1982-1999.

800-982-1769
www.bigtractorparts.com

NEW, USED, AND REMAN PARTS
TOLL FREE: 1-877-928-1646
32427 OLD HWY 34, TANGENT, OR 97389

Combine Parts
Rebuild Kits
Seats w/Air Suspension \$1,025
JD 4010, 4020 Clutch Kits \$715
Reman Engines for Case/IH, John Deere, and Ford
SALVAGED TRACTORS
Farmland Tractor Supply
Parts@Farmlandtractor.com
5157881-1

Benefit today from the strength of Capital Press newspaper and multimedia products and services.
Call 1-800-781-3214 to subscribe.
Capital Press
EMPOWERING PRODUCERS OF FOOD & FIBER
CapitalPress.com

907 Nursery Equip. & Supplies

SELLERS BEWARE
• Know who you are dealing with – independently confirm your buyer's name, street address, and telephone number.
• Never accept a check for more than your selling price.
• Never agree to wire back funds to a buyer or a third party – a legitimate buyer will not pressure you to do so, and you have limited recourse if there is a problem with a wire transfer.
• Resist pressure to "act now." If the buyer's offer is good now, it should be good when the check clears.
• If you accept payment by check, ask for a check drawn on a local bank or a bank with a local branch. You can visit that bank branch to determine if the check is legitimate.
• Consider an alternative method of payment, such as an escrow service or online payment service. If the buyer wants to use a service you have not heard of, be sure to check it out to be sure it is reliable. If you do not feel comfortable with the service, do not use it.

907 Nursery Equip. & Supplies

907 Nursery Equip. & Supplies

907 Nursery Equip. & Supplies

CNC Machining
Fabrication
Experience -- Capacity -- Quality
All services in one location!
Laser Cutting
Paint & Powder Coat
10590 Donald Road NE, Donald, Oregon 97020
503-678-5525
WWW.GKMACHINE.COM
519409-1

GK GREENHOUSES
Pre-drilled for easy assembly!
Covers: Shade-cloth, poly film, polycarbonate sheets and ground cover
Accessories: Shutters, doors, heaters, fans, wire lock, & wiggle wire
10590 Donald Road NE Donald Oregon 97020 503-678-5525
www.GKGreenhouses.com
5199408-1

More Baling Less Fixing
BALERSKITS
BALER LINER
FEWER KNOTTER PROBLEMS
LESS SHEARS FEWER PLUGS
CONSISTENT BALE LENGTH
PROBLEM-FREE ACCUMULATING
FEWER BROKEN BALES
NO BALE CHAMBER BUILD-UP
LDAQmachinery.com
866-889-3846
for Big & Small BALERS
519702-1

TONS OF USED FARM WHEELS
AG WEST TIRE FACTORY
Rickreall
503-623-9171 ~ Mike
199185-1
GET 'EM AT FARMLAND NOW!
1970 International 1026 Tractor, hydro trans., cab.....\$17,000
12' Brown Bear Compost Turner, 3pt PTO driven. Excellent condition \$15,000 \$12,000
JD 540 Loader \$6,500
JD 145 Loader..... \$3,500
Farmland Tractor Supply
Tangent, Oregon
877-928-1646
541-928-1646
32427 Old Hwy. 34
Tangent, OR 97389
5157881-1