

Don't Miss Another Issue of Capital Press!

Stay up to date on the latest agricultural and natural resources news.

ANYTIME ANYWHERE

1 year \$55

2 years \$100

EZ Pay \$4 month



SUBSCRIBE TODAY!



1-800-781-3214
CapitalPress.com

805 Farm Buildings
Martin Cisneros Pole Buildings & Concrete: Shops, garages, arenas, hay storage. Agriculture/Residential, additions and repairs. Serving Oregon CCB# 135771. Licensed, bonded and insured. Excellent references. 503-375-9273 or 503-507-2847

807 Fuel, Heating & Firewood
Split Firewood. Sold in Half or full cord lots. Call for Prices. Salem, OR. 971-701-0081

821 Christmas Trees

BUYING CHRISTMAS TREES

Hello, local family wants your Christmas Trees. Cash buyers. Need approx 3000 different sizes and species. Thank you. 503-317-8586

"The Capital Press is IT!"
Lorin Zastoupil • Leaburg, Ore.
Subscribe at 1-800-882-6789

822 Nursey Stock - Plants

Blueberry Plants
OREGON BLUEBERRY
NURSERY • GENETICS • FARM



Northern Highbush

Southern Highbush

Rabbiteye

"Providing superior plants and service for over 35 years."

(503) 873-1200
oreblueberry.com

805 Farm Buildings

822 Nursey Stock - Plants
HAZELNUT TREES ALLUVIAL ACRES NURSERY
RESERVE NOW FOR FALL Polly-O, Yamhill, McDonald, Wepster, Jefferson, Pollenizers.
Scio, OR 503-508-4684

Sacajawea, Doris, York, Wepster Hazelnut Trees, 4 years old, \$6-\$8. Blueberries, Duke, Legacy: 3 year old plants, \$2.50 each. Crabtree, OR. 503-871-9114

1-800-882-6789
CapitalPress.com

EST 1987
HAZELNUT TREES
LOCALLY GROWN IN DAYTON, OR

Jefferson	Sacajawea	Yamhill
PollyO	McDonald	Eta
Wepster	York	Theta
	Felix	

KCK Farms
503-864-9422
kevin@kckfarms.com

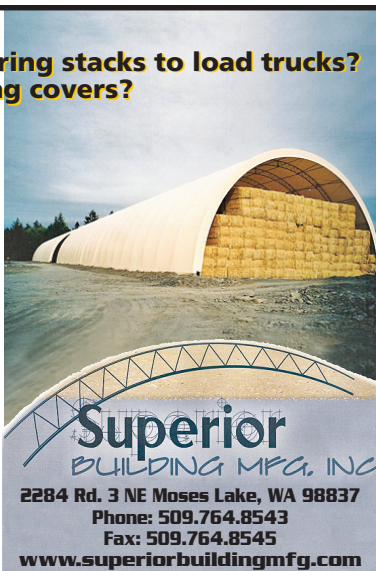
Clockwork
Make This Your First Choice for a One Pick Blueberry Variety.
FALL CREEK FARM & NURSERY, INC.
1.800.538.3001 | www.fallcreeknursery.com

Benefit today from the strength of Capital Press newspaper and multimedia products and services.
Call 1-800-781-3214 to subscribe.
Capital Press
EMPOWERING PRODUCERS OF FOOD & FIBER
CapitalPress.com

Are you tired of:
• Uncovering and recovering stacks to load trucks?
• Bales lost due to leaking covers?

Superior Building Manufacturing Inc. can help ease your mind by:
• Providing a quick payback of 5 to 7 years compared to tarping
• Reducing the loss of bottom and top bales due to water damage
• Reduction of labor by not having to uncover and recover stacks
• Knowing your bales will be in the same condition you originally stored them

Superior Building Manufacturing Inc. offers Engineered buildings in many different sizes. Engineered sizes available are:
• 41', 51', 63', 72', 80' wide buildings by length of your choice.
• Full professional construction or easy to construct yourself
• All buildings are designed and engineered to meet your local wind and snow loading in your area



2284 Rd. 3 NE Moses Lake, WA 98837
Phone: 509.764.8543
Fax: 509.764.8545
www.superiorbuildingmfg.com

824 Seed

824 Seed

824 Seed

Boost Your Yields!
With Wagner Seed
YIELD STAR Cereal Sciences
We are your full-service seed cleaning and processing plant. Top-quality, weed-free seed! Wheat, triticale and other seed products to raise or contract. We also facilitate seed research.

- YS-603:** (SWS) Awned - Tolerant to foot rot. Good falling numbers, good protein. For dryland or irrigated.
- YS-801:** (HRS) Awned - Good test weight, good protein. Best performance under irrigation.
- YS-802:** (HRS) Awned - Good test weight, good protein. Dryland or irrigated.
- YS-5001:** (Triticale) Awnless - Good forage quality, good grain yields, good protein



Now selling Sureflex Conventional corn varieties!

WAGNER SEED
(509) 349-8094 WagnerSeedCo.com
20600 Rd 1 SE • Warden, WA 98857 • 1 mile off exit 188, I-90

824 Seed
SUDAN GRASS: cover crop seed. Also Cowpeas (summer Legume). Albany, OR. Text/ call 541-905-2111

ALFALFA SEED

Quality VNS Alfalfa Seed: \$2.00/lb. Touchet, WA. Chris Kregger 509-394-2400

Pasture Seed \$1.20/lb. Lawn Seed \$1.20/lb. Wheat Straw \$120/ton. Grass Hay \$180/ton. Wheat \$6/bag. Rickreall, OR. 503-623-6922

825 Fertilizer
Manure based organic matter soil amendment. Truck loads. Delivery Possible. Albany, OR. area. 503-871-9114

POTENTGROW
Organic Fertilizer
AG SERVICES
•Transportation
•Warehousing
•Chicken litter/ manure
•Organic fertilizer
•Hemp logistics
For pricing and freight quotes call/ text 541-602-9477 or e-mail: info@potentgrow.com

826 Organic
900 Bales of Organic Haylage: good quality, \$55/ bale. Scio, OR. 503-932-1005

CERTIFIED ORGANIC Alfalfa. 3x4 bales, 170-183 RFV. Triticale Alfalfa Mix. Othello, WA. 509-989-2141, 509-592-3499

828 Misc for Sale

STRAWBERRIES: Ready to PICK. Tillamook Variety. Huge orders available. \$15/ 1/2 flat. Winlock, WA. 360-262-9118

835 Hemp
Hemp Property for lease. Approximately 50+ acres in 2 adjacent separate lots, each lot has well, electricity and easy field access. Class II soil. Was in hemp production in 2019. Located in Junction City Oregon. All terms are negotiable. Junction city, OR. 541-912-2940



★HEMP★
Custom plastic laying and hemp planting with water wheel planter 3 - 6' spaced rows at a time with many choices for in row spacing on plants (Rain-Flo Equipment). All GPS done with very modern equipment and latest technology. Call ASAP to secure your planting date with our professional team! 503-437-4833

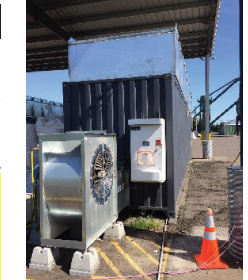
BUYERS BEWARE
• If the deal sounds too good to be true, it probably is.
• Know who you are dealing with - independently confirm your buyer's name, street address, and telephone number.
• Don't send payment for an expensive item you haven't inspected.
• Consider how you pay. Credit cards have significant fraud protection built in, but some payment methods don't. Wiring money through services such as Western Union or MoneyGram is risky because it's nearly impossible to get your money back. That's also true for reloadable cards and gift cards. Honest companies won't require you to use these payment methods.
• Never use a bank-to-bank transfer in a transaction.

887 Irrigation Equip.

835 Hemp
CBD and CBG Clones available now. The Oregon Hemp Farmer. Silverton, OR. 503-873-6774; 503-551-5809; theoregonhempfarmer@gmail.com



Hemp Starts Available Now. Super Fair Price. Price based on Quantity. Ask us about our Hemp Flower for sale too! St. Paul, OR. 503-409-9090



Used- Ventco 40' Batch Style Dryer System. Includes 5 Magazines. Capacity of 12,000 wet lbs (~4,000 dry lbs) per 20-hour production day and 600,000 wet lbs (~200,000 dry lbs) for a 50-day drying season. Each Dryer is equipped with a Neco 25 HP Centrifugal Fan Model 04CHA253 with 1750 RPM, 230-460 Volt, 3 Phase and a Neco Downstream Heater Model 05DSH-1LPM-V2 with burner rating of 2.6 btu. System has been used in production for 2 drying seasons and is designed for either commercial or individual applications. SOP's, setup and training available. \$65,000 OBO. Corvallis, OR. 503-917-8301

New Holland FX28 Forage Chopper. Great condition, 1600 hours, 4 row corn head, 8" grass head, \$65,000 OBO. Cornelius, OR. 503-341-4289

869 Livestock Equip. & Supplies



New IA 24' portable hay feeder with 8 hole wheels swing away tongue inner bunk with 35 outer station openings. Buy 2 or More For \$3,995 each. Bend, OR. 541-548-7185 mtcsales.net

4 Creep Feeders. Can hold 4 tons of pellets. All have cages. Can deliver \$3000 for choice, \$2500 each for all. Southeast Washington 541-589-3992

Livestock Panels: 16' (6) rail, (3) brace, \$117 each. 12' panels, (6) rail, (2) brace, \$88. Bow gates, all lengths and sizes. These panels are new Green color, hundreds available. **Heavy 16' Feeder Panels,** \$330 each. La Grande, OR. 541-805-9279, 541-963-6258



2012 Supreme 1200TMM Feed Truck. Allison transmission, 2 speed auxiliary. 836 Hours. One owner. Excellent Condition, \$210,000. Emmett, ID. Call or text Chris 541-810-8007; www.berrymachinery.com

IT'S SO EASY TO PLACE CAPITAL PRESS CLASSIFIED ADS... PHONE TOLL FREE 1-800-882-6789

887 Irrigation Equip.

Your Leading Source for Irrigation Supplies
HPS Pipe & Supply
• Drip Irrigation • Filtration • Design
598 Baseline, Cornelius, OR 97113
Phone (503) 357-4217
www.hpspipe.com
info@hpspipe.com

ERNST IRRIGATION
GOT TRAVELERS?
NEW TRAVELERS:
• 4"ID X 1400ft w/1D4045 engine and Cornell 3RB pump
• 4"ID X 1400ft w/8hp Honda Engine Drive
• 3.7"ID X 700ft w/5.5hp Honda Engine Drive
• 3"ID X 1100ft w/5.5hp Honda Engine Drive
Ask About USED MACHINES in Stock
www.ErnstIrrigation.com • (503) 633-1111
20179 Main St., St. Paul, OR 97137 • Mon-Fri 8am-5pm; Sat 8am-2pm

869 Livestock Equip. & Supplies

Filson Cattle Squeeze Chute, \$1800. New paint job. Call for pictures. Salem, OR. 503-551-1578

Highway guard rail for cattle pens. Roseburg, OR. 541-944-3878

WANTED: Twin Screw vertical mixer wagon in good condition. 253-833-7707, 253-350-2459, 253-640-3345

872 Dairy Eq. & Supplies

Polydome Calf Nursery: Hutches available for various climates. Western Polydome, Inc. Monroe, WA. 800-822-5837

NEW MANURE SPREADER
400 bu. • BUY OR RENT Call Scott at Barr-Tech Compost/Organics Recycling Authorized Dealer of PIK RITE Spreaders
509-590-0437
www.Barr-Tech.net
Sprague, WA 5174532-1

SILAGE WRAP
Better forage for your livestock



541-369-2850
26890 Powerline Rd
Halsey, OR 97348

SMITH PACKAGING
smithpackagingservices.com
5193790-1

875 Tanks & Storage

FUEL TANKS: Used single wall tanks 1500 & 2000 gallons. New 1000, 2000, 3000 and 4000, etc. gallon double walled tanks. Salem, OR. Peter 503-881-9803

878 Generators



MagneTek RDS 630 generator. Stationary diesel, 50kW. Can be installed as single or 3 phase, \$8000. Vale, OR. 541-881-6467



GENERATORS: Used, low hour takeouts, 20kW to 2000kW, diesel, propane, & natural gas. Cooperstown, ND. We ship nationwide. 701-371-9526 or 701-367-4305 abrahamindustrial.com



1998 Katolight 350 KW genset on 3 axle trailer with 186 ACTUAL HOURS. 8V92 Detroit Diesel. Mod. D3500FRX4. 277/480V. 3 phase. 1 phase. 526 Amp. One owner former City machine that is in brand new condition. This machine is \$100,000 new. Buy for \$24,900. Located in Twin Falls ID. Call 208-613-0050

887 Irrigation Equip.

Pivots: All brands. No rust. Plus buried wire. Call Keizer, OR. Cell 503-881-3232