

824 Seed

SUDAN GRASS: cover crop seed. Also Cowpeas (summer Legume). Albany, OR. Text/ call 541-905-2111

ALFALFA SEED

Quality VNS Alfalfa Seed: \$2.00/lb. Touchet, WA. Chris Kregger 509-394-2400

Pasture Seed \$1.20/ lb. Lawn Seed \$1.20/ lb. Wheat Straw \$120/ ton. Grass Hay \$180/ ton. Wheat \$6/ bag. Rickreall, OR. 503-623-6922

825 Fertilizer

Manure based organic matter soil amendment. Truck loads. Delivery Possible. Albany, OR. area. 503-871-9114



AG SERVICES
•Transportation
•Warehousing
•Chicken litter/ manure
•Organic fertilizer
•Hemp logistics
For pricing and freight quotes call/ text 541-602-9477 or e-mail: info@potentgrow.com

826 Organic

900 Bales of Organic Haylage: good quality, \$55/ bale. Scio, OR. 503-932-1005

CERTIFIED ORGANIC Alfalfa. 3x4 bales, 170-183 RFV. Triticale Alfalfa Mix. Othello, WA. 509-989-2141, 509-592-3499

828 Misc for Sale

STRAWBERRIES: Ready to PICK. Tillamook Variety. Huge orders available. \$15/ 1/2 flat. Winlock, WA. 360-262-9118

835 Hemp

New Holland FX28 Forage Chopper. Great condition, 1600 hours, 4 row corn head, 8' grass head, \$65,000 OBO. Cornelius, OR. 503-341-4289



Hemp Starts Available Now. Super Fair Price. Price based on Quantity. Ask us about our Hemp Flower for sale too! St. Paul, OR. 503-409-9090

Hemp Property for lease. Approximately 50+ acres in 2 adjacent separate lots, each lot has well, electricity and easy field access. Class II soil. Was in hemp production in 2019. Located in Junction City Oregon. All terms are negotiable. Junction city, OR. 541-912-2940

CBD and CBG Clones available now. The Oregon Hemp Farmer. Silverton, OR. 503-873-6774; 503-551-5809; theoregonhempfarmer@gmail.com



★HEMP★
Custom plastic laying and hemp planting with water wheel planter 3 - 6' spaced rows at a time with many choices for in row spacing on plants (Rain-Flo Equipment). All GPS done with very modern equipment and latest technology. Call ASAP to secure your planting date with our professional team! 503-437-4833

869 Livestock Equip. & Supplies

Highway guard rail for cattle pens. Roseburg, OR. 541-944-3878

887 Irrigation Equip.

869 Livestock Equip. & Supplies

Filson Cattle Squeeze Chute, \$1800. New paint job. Call for pictures. Salem, OR. 503-551-1578

4 Creep Feeders. Can hold 4 tons of pellets. All have cages. Can deliver \$3000 for choice, \$2500 each for all. Southeast Washington 541-589-3992



New IA 24' portable hay feeder with 8 hole wheels swing away tongue inner bunk with 35 outer station openings. Buy 2 or More For \$3,995 each. Bend, OR. 541-548-7185 mtcsales.net



Grain Bin: diameter 6ft; overall height 11ft+; \$1500 OBO. Aurora, OR. 503-803-0912



2012 Supreme 1200TTM Feed Truck. Allison transmission, 2 speed auxiliary. 836 Hours. One owner. Excellent Condition, \$210,000. Emmett, ID. Call or text Chris 541-810-8007; www.berrymachinery.com

Livestock Panels: 16' (6) rail, (3) brace, \$117 each. 12' panels, (6) rail, (2) brace, \$88. Bow gates, all lengths and sizes. These panels are new Green color, hundreds available. **Heavy 16' Feeder Panels,** \$330 each. La Grande, OR. 541-805-9279, 541-963-6258

887 Irrigation Equip.

WATER MASTER SERIES AND EVERGREEN
SUPERIOR SERVICE & DESIGN

- All your needs for irrigation parts service
- We build custom equipment for your special needs
- Hose replacements & fusion repairs
- Transport Tanks • Rental Returns & Used Equipment
- Structural and steel available for purchase

VALLEY WORKMAN
Truck Equipment

- Full Service
- Alterations
- Dump Bodies • Hoists
- Farmbeds • Flatbeds

VALLEY FAB
10910 Portland Rd. NE • Brooks, OR
Call: 503-792-3739 • Fax: 503-792-3738

IT'S EASY TO ADVERTISE WITH CAPITAL PRESS
To place your line classified ad, call toll-free:
1-800-882-6789
or go ONLINE
24/7/365
CapitalPress.com

872 Dairy Eq. & Supplies

Complete Milking System: 4000 gallon Mueller tank, (3) 5HP 3 phase compressors, 10HP 3 phase rotary vane pump, 3in pipe line, receiver, transfer pump, pulsators. Germania model F machines. Spare 3 phase motor, \$25,000 for all. Will sell separately. Meridian, ID. 208-870-9979

Polydome Calf Nursery: Hutches available for various climates. Western Polydome, Inc. Monroe, WA. 800-822-5837

875 Tanks & Storage

FUEL TANKS: Used single wall tanks 1500 & 2000 gallons. New 1000, 2000, 3000 and 4000, etc. gallon double walled tanks. Salem, OR. Peter 503-881-9803

878 Generators

MagneTek RDS 630 generator. Stationary diesel, 50kW. Can be installed as single or 3 phase, \$8000. Vale, OR. 541-881-6467



GENERATORS: Used, low hour takeouts, 20kW to 2000kW, diesel, propane, & natural gas. Cooperstown, ND. We ship nationwide. 701-371-9526 or 701-367-4305 abrahamindustrial.com

887 Irrigation Equip.

Westinghouse IRRIGATION/ HYDRANT PUMP assembly: 100hp, 480/277v, 3ph 1500 gpm, 150"Lx55"Wx45"H, soft start controller/ panel, \$6400 OBO. Ferndale, WA. 360-380-2907

887 Irrigation Equip.

WANTED: 2" or 3" used irrigation pipe. Rickreall, OR. Call or text 503-551-4638

25HP Goulds 12 stage well pump, 350GPM, 120" of 6" column, \$7500. Brand New. Main, OR. 541-892-2117

4000' gated pipe 12" to 4". 300' of aluminum gated pipe; 8" to 6". 50 centers/ foot. Mesa, WA. 509-531-5399

(20) 1/4 mile Wheel Lines with movers. 4" and 5", 48" to 72" wheel diameter, Wade and Gheen. Disassembled and ready to load. \$4,000+ each. Salem, OR. 503-838-3779

Pivots: All brands. No rust. Plus buried wire. Call Keizer, OR. Cell 503-881-3232

Drip Tube: .26gph at 30" centers, 350 rolls. 500 rolls of drip tube 12" spaced emitters suitable for blueberries. \$75 per roll. Lafayette, OR. 503-437-4833

WANTED: irrigation main line, 5", 6" and 8" supply hydrants. Wade rain and/ or Ringlock. Salem, OR. or surrounding area. 503-437-4833

Used Valley 600 circle, 7 stands, 6-5/8" pipe, newer select control panel, new pipe on corner, 1000 8' system, 174' corner, 82' overhang, \$17,000. Near Pasco, WA. 509-380-7171



Thompson 8in. Towable Diesel Pump. Perfect for dewatering or irrigation use. Self priming. 4.9 ACTUAL HOURS, 6 Cylinder Deutz diesel. One owner former Municipal pump that has very low hours and is in like new condition. It's better than a new one. \$14,900. Located in Twin Falls ID. Call 208-613-0050

H₂S Pipe & Supply
Specializing in
• Drip Irrigation
• Filtration • Design
598 Baseline, Cornelius, OR
(503) 357-4217
www.hspipe.com
CCBH120254

High Quality Brass Vyrsa Impact Sprinklers
1/2" Part Circle \$15.60
1/2" Full Circle \$11.70
3/4" Part Circle \$25.74
3/4" Full Circle \$14.88
Call For Bulk Pricing and FREE Brochure!
WaterTec
(360) 393-4923
www.watertecna.com
Lynden, WA

899 Heavy & Indust. Eq.

2014 Case TV380 Skid-steer: GP Bucket, new forks. Hydraulic quick coupler. Asking \$24,950. Sandy, OR. Call Pepe: 503-544-3232; Call Pat: 503-407-9062

1980 CAT D8K dozer, Canopy, ripper, u blade, good undercarriage. \$42,500. Estacada, OR. 503-975-4324

2002 Hitachi ZX200LC Excavator, Hydraulic Thumb and Q/C, 10,000 hours, Asking \$42,500. Sandy, OR. Call Pepe: 503-544-3232; Call Pat: 503-407-9062

887 Irrigation Equip.



2008 MultiQuip 6in. self priming pump. Self contained on trailer. Deutz 3 cylinder diesel. Well maintained, very clean and operates like new, \$8900. Located in Twin Falls ID. Call 208-613-0050

Bauer 950"x3.7" hard hose hydraulic irrigator. Nelson 150 Gun. Make Offer. Salem, OR. 503-551-1578

WANTED: Motor driven irrigation pump. Gas or Diesel. 800GPM, 100PSI. Please call! Phone was broken: 701-570-5600

(57) Used Pivots: Engines, pumps. Garden Valley, ID. Call Mike at 208-420-1480, or see www.pivotsplus.com

Cadman 3750XL hard-nose sprinkler reel, \$16,500. Rickreall, OR. 503-838-3740, 503-383-6722

890 Packing/ Processing Eq.

Used Super Sacks. Used once. Stovepipe Top: \$3. Opened Top: \$5. Salem, OR. 503-932-8598

LOOK!
100 gallon, stainless steel, steam distiller. 220 volt. Like new. \$16,000. Halsey, OR. 541-760-9112

893 Logging Equip.

1996 EX200-5 Hitachi Excavator: thumb, excellent condition, all original, 7500 hours, \$29,000. Creswell, OR. 541-912-7807

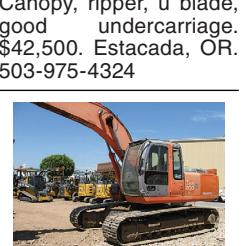
896 Forklifts

Champ Forklift for parts. Model 350-80. Good engine and hydraulic system, good rubber, 30ft lift, 8000 lb unit. Has transmission problem, \$1500. Turlock, CA. Gary 209-606-3094

899 Heavy & Indust. Eq.



2001 Sullair 185 CFM air compressor. John Deere Diesel. Low hours, well maintained and work ready, \$6500. Located in Twin Falls ID. Call 208-613-0050



Takeuchi TB240 Mini Excavator. Enclosed Cab with AC, Hydraulic Thumb, Wedge Q/C. Dig and Clean up Buckets, Blade. Good Tracks. 3356 Hours. Asking \$34,500.00. Sandy, OR. Call Pepe: 503-544-3232; Call Pat: 503-407-9062.

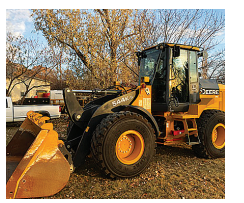
899 Heavy & Indust. Eq.

SH Bucyrus Erie Excavator: \$4,500 OBO. Long Creek, OR. 541-786-4138

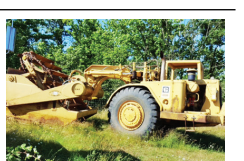
2005 CAT 420D backhoe, 4x4, cab, a/c, e-stick, 4200 hours, 2 buckets. \$33,500. Cove, OR. 503-975-4324

REPLACEMENT DECAL SETS

Construction, Forestry & Ag Equipment. Fast, Knowledgeable, Reliable Service. 215-536-5339 email: info@CustomServicesCompany.com
Thousands of sets, Old & New, in our digital inventory. www.QuipCal.com



2017 Deere 544K-II 1680 hours, quick attach bucket, real nice low hour machine. Ready to work. \$135,000. Cove, OR. 541-910-8024



CAT 623-B: Self-loading scraper, good condition, Reduced \$29,500. Salem, OR. 503-362-3055



D-6 H U-dozer with tilt and ripper, near new engine and hydraulic pump, \$79,500. Salem, OR. 503-362-3055



MASSEY FERGUSON 1160 with 232 loader, 4x4, 41HP Isuzu, 2200 hours, mower deck. Asking \$12,950. Sandy, OR. Call Pepe: 503-544-3232; Call Pat: 503-407-9062

1996 EX200-5 Hitachi Excavator: thumb, excellent condition, all original, 7500 hours, \$29,000. Creswell, OR. 541-912-7807



2001 Sullair 185 CFM air compressor. John Deere Diesel. Low hours, well maintained and work ready, \$6500. Located in Twin Falls ID. Call 208-613-0050



Takeuchi TB240 Mini Excavator. Enclosed Cab with AC, Hydraulic Thumb, Wedge Q/C. Dig and Clean up Buckets, Blade. Good Tracks. 3356 Hours. Asking \$34,500.00. Sandy, OR. Call Pepe: 503-544-3232; Call Pat: 503-407-9062.

899 Heavy & Indust. Eq.



1997 CAT 307B Excavator, 2 Buckets, thumb, blade, Asking \$24,950. Sandy, OR. Call Pepe: 503-544-3232; Call Pat: 503-407-9062

There Are Always Great Deals In Capital Press Classifieds. Call Now And Add Yours!
1-800-882-6789

902 Farm Equip. Parts

899 Heavy & Indust. Eq.

Continental Boiler: 700HP, Fire tube, 2 pass gas or diesel. No boiler ID stamp on vessel. Good condition, \$30,000. Toppenish, WA. 509-952-4457

CASE INDUSTRIAL PARTS
We sell genuine, after market, and used CASE parts at discount prices nationwide. Call For Free Catalog.

CENTRAL EQUIPMENT
AFTER MARKET & USED PARTS
Medford, OR
(888) 593-8749

BIG TRACTOR PARTS, INC.
~ GEARED FOR THE FUTURE ~
STEIGER TRACTOR SPECIALIST

- 1. We are your source for new & used Steiger drivetrain parts Series 1-9300 Series.
- 2. We rebuild Spicer manual transmissions, Fugli power shift transmissions, dropboxes & axle with ONE YEAR WARRANTY!
- 3. We now rebuild computer control boxes for Steiger tractors 1982-1999.

800-982-1769
www.bigtractorparts.com

NEW, USED, AND REMAN PARTS
TOLL FREE: 1-877-928-1646
32427 OLD HWY 34, TANGENT, OR 97389

Combine Parts
Rebuild Kits
Seats w/Air Suspension \$1,025
Reman Engines for Case/IH, John Deere, and Ford
JD 4010, 4020 Clutch Kits \$715
SALVAGED TRACTORS
Farmland Tractor Supply
Parts@Farmlandtractor.com

HAYMAKER HEAVEN
R.I.P.
Reasonable Implement Pricing

FRESH IN FOR PARTS ONLY NEW HOLLAND SWATHERS

H8040	1475
HW340	1118
HW320	1116
HW300	1114
HW325	1112
HS14	1100
HS16	912
2550	910
2450	909
2355-DISCBINE	907
2300H	905
2200H	903
1499	499
1496	479
1495	116
1469	114

LOTS OF TRACTORS COMBINES TOO
Nyssa Tractor & Implement
Celebrating 30 years in the agricultural machinery business.
Our yard has 5 miles of road, with machinery on both sides.
FREE Tours Given Daily.
Call Toll Free: **(833) 372-4020**
www.nyssatractor.com
sales@nyssatractor.com
Nyssa, OR

ERNST IRRIGATION
GOT TRAVELERS?

NEW TRAVELERS:

- 4" ID X 1400ft w/JD4045 engine and Cornell 3RB pump
- 4" ID X 1400ft w/8hp Honda Engine Drive
- 3.7" ID X 700ft w/5.5hp Honda Engine Drive
- 3" ID X 1100ft w/5.5hp Honda Engine Drive

Ask About USED MACHINES in Stock

www.ErnstIrrigation.com • (503) 633-1111
20179 Main St., St. Paul, OR 97137 • Mon-Fri 8am-5pm; Sat 8am-2pm

EARTH MOVING EQUIPMENT FOR RENT

- CAT 623 SCRAPERS
- CAT 815 ROLLER
- CAT ROAD GRADER
- 3.5 YD. LOADER

Rent by the week or month. Great rates, scheduling now!

Call Rob Weathers
503-931-0512