

210 Trucks 210 Trucks 210 Trucks 210 Trucks 210 Trucks 210 Trucks 210 Trucks 210 Trucks

DORNGOODDEAL.COM

HEY LOOK AT THIS! 2008 FORD F350, with a 6.7 Power stroke diesel 4x4, 56k miles, 9' flatbed with 28" metal side racks and wood deck, air conditioned cab, cruise control, tilt wheel, vinyl floor and seat, 6x brand new tires. This is a must see truck that is ready to go to work today..... **\$34,995**

2008 FORD F-350 40k actual miles, 2wd 12' flatbed dump 5.4, automatic trans, tilt wheel, vinyl seat and floors, only one owner, government fleet owned and maintained. This truck is ready to go to work for you today..... **\$22,995**

2011 FORD F250 4X4 SUPER DUTY, 6.2 gas V8, automatic, tilt wheel, air conditioned cab, manual windows and locks, vinyl seats and floors, am/fm cd player with auxiliary outlet to connect to your favorite music or podcasts, this truck runs great and only has 78k actual miles..... **\$19,995**

2014 CHEVROLET 3500 15 passenger van, 6.0 V8, auto, air cond, power windows and locks, vinyl floors, one owner fleet maintained, only 88k actual miles..... **\$18,500**

2004 CHEVROLET SILVERADO 1500, extra cab with rear suicide doors, long bed that doesn't have a dent inside it, V8 auto, air conditioning, intermittent wipers and cruise control, 131k actual miles..... **\$6,495**

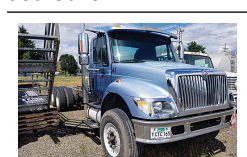
Come see us soon or call Mike Dorn or John Dorn. We would love to hear from you today! (If you don't like talking to John, just ask for Mike.)
DORN BROS. TRUCK SALES, Inc.
SINCE 1947
(503) 585-4731
3130 PORTLAND RD. • SALEM, OR
Prices good for 1 week from publication date.

2007 Freightliner: 3 axle tractor, 10 speed, wet kit, \$12,500 OBO. Cornelius, OR. 503-341-4289



2001 IHC 2574 T/A HydroVac Truck. CAT C13 410HP Diesel. Fuller 13 speed. 66,000 GVW. AC, AM/FM, Cruise, Jake, Side lockers. 254" WB. VacCon V311LHAE Vac unit. 117K Miles. Low hours. Former State agency owned. Well maintained and in immaculate condition. Work ready, \$35,900. Located in Twin Falls ID. Call 208-613-0050

Freightliner \$35,000. Pendleton, OR. 541-969-8975



2007 International 7500: conventional cab, HT570, 310HP, automatic, 3 axles with heavy duty front axle, 270"WB, 308,133 miles, \$15,000 OBO. Salem, OR. 503-881-1488

1-800-882-6789 CapitalPress.com

2005 Kenworth T800 Dump Truck: C15, 8 Double L, 4 Axle, Electric Tarp, Q/C Box, Asking \$39,950. Sandy, OR. Call Pepe: 503-544-3232; Call Pat: 503-407-9062



1977 Pumper 1977 Mack Pumper fire truck. Runs good. Make offer. \$1,000. Wasco, OR. 360-518-1420

2001 IHC 2674 tandem axle dump truck with 15-16 yard bed with electric load tarp. N-14 Cummins, 370HP. Jake Brake. RTLO 13 speed with side locker Chalmers style rears. 18,000 lb. front axle. PS, AC, PW, PM, AM/FM CD, 80% rubber. 315/80/22.5 fronts. Plumbed for a pup. Former State truck in like new condition. All maintenance records included. Work ready, needs nothing, \$24,900. Located in Twin Falls ID. Call 208-613-0050

IF YOU HAVE A BEEF - sell it in next week's Capital Press!

2003 Freightliner cab and chassis. 330HP CAT 3126 Diesel. Allison 6 speed. AT with retarder and PTO capable. PS, AC. 16ft. of straight 11in. frame. Brand new radials. 33,000 GVW. Former California State vehicle that is as clean as new and has excellent fleet maintenance. Truck is in like new condition, \$12,900. Located in Twin Falls ID. Call 208-613-0050

"...Sold both bulls second week. Thanks!" Tiara Farm Port Townsend, Wash. You sell too at 1-800-882-6789.

1988 Ford F350 4WD REDUCED: V8 460 7.5 L. 5 Speed Manual. 29091 miles. 200 gallon water tank. 20HP Kohler pump engine, 150GPM Darley Pump (C52). Cascade Foam Flo System. **Sealed bid - minimum bid \$4,000.** Bids must be received by June 20, 4 p.m. Mail to: Scio Fire, Sealed Bid, PO Box 1, Scio OR 97374



2005 Freightliner M2 6x6, CAT C13 410HP, 10 speed, double lockers, 12K Original Miles, \$69,500. Gresham, OR. Tim 503-719-2545

FARM BUREAU MEMBERS GET ADDITIONAL \$500 REBATE

Call 503-312-4006

<p>2020 Ranger 2WD Service Body</p> <p>2.3L EcoBoost 10-Speed Automatic Power Group, AC SYNC Bluetooth Tow Package, Cruise Control, Backup Camera, Demo</p> <p>MSRP \$42,675 - Our Discount \$6,706 - Rebate \$1,000 #B02489 Your Price: \$34,969</p>	<p>2020 Transit Connect LWB Reefer</p> <p>2.0 GDI I-4, AC 8-Speed Transmission Power Group, Cruise Control Backup Alarm SYNC Bluetooth Shelving System</p> <p>MSRP \$48,045 - Our Discount \$2,826 - Rebate \$1,750 - Uplift Rebate* \$500 #38298 Your Price: \$42,969</p>
<p>2020 F-250 4x4 SuperCab Service Body</p> <p>6.2L V-8, AC 8-Speed Trans. Backup Camera Power Group SYNC Bluetooth Cruise Control 3.73 Locking Axle</p> <p>MSRP \$58,970 - Our Discount \$4,751 - Rebate \$500 - Uplift Rebate* \$750 #C75882 Your Price: \$52,969</p>	<p>2020 AWD T350 High Roof KUV</p> <p>3.5L V-6, Backup Camera 10-Speed Automatic Trans. Power Group, 4.10 LS Axle Tow Package, AC 400W Inverter SYNC 3 Bluetooth Trailer Brake Controller</p> <p>MSRP \$61,840 - Our Discount \$3,871 - Rebate \$1,000 - Uplift Rebate* \$1,000 #A64111 Your Price: \$55,969</p>
<p>2020 Ranger 4x4 Service Body</p> <p>2.3L EcoBoost 10-Speed Automatic Power Group Air Conditioning Tow Package Cruise Control Backup Camera</p> <p>MSRP \$46,015 - Our Discount \$2,046 - Rebate \$1,000 #A34237 Your Price: \$42,969</p>	<p>2020 F-450 SuperCab 4x4 84" CA</p> <p>6.7L Diesel 10-Speed Trans. 4.10 Axle Cruise Control Power Group SYNC Bluetooth Air Conditioning</p> <p>MSRP \$59,165 - Our Discount \$1,696 - Rebate \$500 #C52558 Your Price: \$56,969</p>
<p>2019 F-550 SuperCab 4x4 11 ft Service Body</p> <p>6.7L Diesel, 19,500 GVW 8-Spd Auto Tow/Haul Trans. Trailer Brake Controller 4.88 Limited Slip Axle Trailer Tow Package SYNC Bluetooth, AC Cruise Control, ABS</p> <p>MSRP \$79,920 - Our Discount \$8,451 - Rebate \$1,750 - Uplift Rebate* \$1,000 #F24937 Your Price: \$68,719 *Ford Credit Bonus Cash** \$750 Your Price after additional incentives: \$67,969</p>	<p>2019 F-550 SuperCab 4x4 12 ft Contractor</p> <p>6.7L Diesel, 19,500 GVW 8-Spd Auto Tow/Haul Trans. Trailer Brake Controller 4.88 Limited Slip Axle High Capacity Trailer Tow SYNC Bluetooth, AC Power Group, Cruise</p> <p>MSRP \$79,435 - Our Discount \$8,451 - Rebate \$1,250 - Uplift Rebate* \$1,000 #G80702 Your Price: \$68,719 *Ford Credit Bonus Cash** \$750 Your Price after additional incentives: \$67,969</p>
<p>2020 F-250 Crew Cab 4x4 6.75 ft Bed</p> <p>6.7L Diesel 10-Speed Trans. STX Package Power Group Aluminum Wheels Trailer Brake Controller Tow Package, AC</p> <p>MSRP \$58,255 - Our Discount \$2,786 - Rebate \$1,500 #C62848 Your Price: \$53,969</p>	<p>2019 F-450 Crew Cab 4x4 Diesel 11' Service Body</p> <p>6.7L Diesel, Rearview Camera 8-Spd Auto Tow/Haul Trans. Trailer Brake Controller Power Equipment Group Tow Package, AC SYNC Bluetooth, Cruise, 4.10 LS Axle</p> <p>MSRP \$77,860 - Our Discount \$6,391 - Rebate \$1,750 - Uplift Rebate* \$1,000 #G59033 Your Price: \$68,719 *Ford Credit Bonus Cash** \$750 Your Price after additional incentives: \$67,969</p>
<p>2021 E-350 High Roof KUV</p> <p>7.3L V-8, Power Group 6-Speed Transmission 4.10 LS Axle, AC Backup Camera Tow Package Adaptive Cruise Control Driver Assist Package</p> <p>MSRP \$61,635 - Our Discount \$2,581 - Rebate \$1,500 - Uplift Rebate* \$1,000 #C06470 Your Price: \$54,969</p>	<p>2020 Transit T250 MR Reefer</p> <p>3.5L V-6 10-Speed Automatic Power Group Air Conditioning Electric Standby Cruise Control Freezing Capable</p> <p>MSRP \$66,800 - Our Discount \$2,581 - Rebate \$1,250 - Uplift Rebate* \$1,000 #A67226 Your Price: \$61,969</p>
<p>2020 F-550 4x4 KMS Crane Body</p> <p>6.7L Diesel, 19.5 GVW 10-Speed Trans. Backup Alarm, AC Power Group 16k lb. Crane LED Work Lights Tow Package</p> <p>MSRP \$109,755 - Our Discount \$9,286 - Rebate \$500 - Uplift Rebate* \$1,000 #A03986 Your Price: \$98,969</p>	<p>Dale E. Sykes Commercial Sales Manager Available 7 days a week at: 503-312-4006 dale@newbergford.com</p>

visit newbergfordfleet.com
503-312-4006
3900 Portland Rd. (99W)

Offers expire 7 days after publication and subject to prior sale and incentive changes. *Uplift rebates for businesses only with your \$1,000 or more uplift. **Must finance with Ford Credit. ***In-Store Assistance Rebate requires trade-in of 1995 or newer vehicle or lease terminated 30 days prior to or 90 days after delivery. ****Requires proof of business ownership. Sale prices do not include license & title and \$50 documentation fee. Pictures and actual units may vary. Sale prices do not apply to A, X, Z and D plans.

COMMERCIAL VEHICLE CENTER

We deliver your message to your ag customers, wherever they are.

- Newspaper
- E-Editions
- Websites
- Mobile
- Flyers
- Custom Publications

Capital Press
EMPOWERING PRODUCERS OF FOOD & FIBER

800-882-6789
or go to
CapitalPress.com

Don't miss another issue of Capital Press

Up to date agricultural and natural resources news plus classified ads.

ANYTIME • ANYWHERE

SUBSCRIBE TODAY!

1 year \$55.00
2 years \$100.00
EZ Pay \$4.00/month
Outside US, call for quote.

VISA
MasterCard
Check

Name _____
Address _____
City _____ State _____ Zip _____
Phone (_____) _____
Card # _____ Exp. _____ Signature _____

Mail to: Capital Press, P.O. Box 2048, Salem, OR 97308
1-800-781-3214 • CapitalPress.com