

905 Antique Farm Eq. & Parts

Sickle Bar Mower for Farmall Cub. FREE. Scappoose, OR. 503-804-2652

2 blade plow with all attachments for 3 point hitch. Including rollers. Like new condition, \$265. Clatskanie, OR. 503-728-3562

(2) Fairbanks Morse, (1) Stover, (1) John Deere, (2) McCormick Deering hit and miss engines. (1) heavy duty antique drill press. Long Creek, OR. 541-786-4138

907 Nursery Equip. & Supplies

USED NURSERY CONTAINERS:
Used, but reusable nursery containers. All sizes. Inventory changes daily. Call for current availability and prices. Sawyer Farms, Scio OR. 503-769-3417, juddsfarm@wvi.com (also wanted: used containers)

HOT! SAVINGS at Capital Press 1-800-882-6789
CapitalPress.com

907 Nursery Equip. & Supplies

FRESH SAWDUST:
Consistently fair pricing. 9 Unit Loads Now Available Forest-Grove, OR. For pricing call 503-849-0216

911 Hay Equip.

Hesston 4690: 3 tie baler. Always shedded, 2290 hours, \$8,000. Carlton, OR. 503-550-5694

Large Supply of Re-built New Holland Bale Wagons: Also buying New Holland bale wagons. Sod Busters Sales, Polson, MT. 406-883-2118

H-2A LABOR & HOUSING

H-2A Farm Labor & Housing available. Housing starts @ \$10/ day, Yakima - Hermiston Region. **AgriLabor:** "Labor Where you want it" 541-571-5989 **AgriLaborInc.com**

907 Nursery Equip. & Supplies

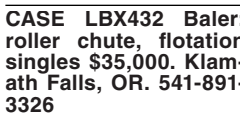
911 Hay Equip.



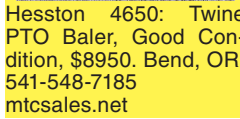
New Holland 1032 Pull Bale wagon. Self contained hydraulics, auto tie, 2 wide, Good condition, \$6950. Bend, OR. 541-548-7185 mtcsales.net



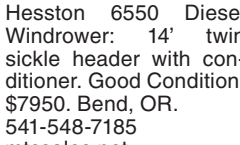
2007 CAT 924G Hay Squeezer. A/C, heater. Enclosed cab, Sunny D solid fork clamp, \$60,000 OBO. El Nido, CA. 209-777-0075



CASE LBX432 Baler: roller chute, flotation singles \$35,000. Klamath Falls, OR. 541-891-3326



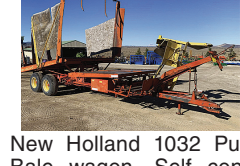
Hesston 4650: Twine PTO Baler, Good Condition, \$8950. Bend, OR. 541-548-7185 mtcsales.net



Hesston 6550 Diesel Windrower: 14' twin sickle header with conditioner. Good Condition, \$7950. Bend, OR. 541-548-7185 mtcsales.net

907 Nursery Equip. & Supplies

911 Hay Equip.



New Holland 1032 Pull Bale wagon. Self contained hydraulics, auto tie, 2 wide, Good condition, \$6950. Bend, OR. 541-548-7185 mtcsales.net



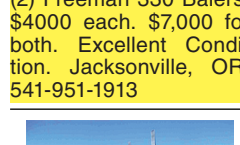
2007 CAT 924G Hay Squeezer. A/C, heater. Enclosed cab, Sunny D solid fork clamp, \$60,000 OBO. El Nido, CA. 209-777-0075



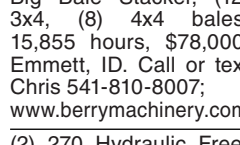
Big bale 3x4 pull stacker, 6 bale, \$11,000. Albany, OR. 503-510-7779



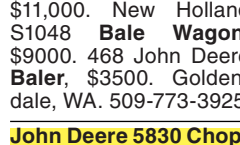
Gehl 1710: 540 PTO, 5'x6' roll baler, flotation tires, bale bumper, hydraulic tie. Bales hay or haylage. Good Condition, \$6950. Bend, OR. 541-548-7185 mtcsales.net



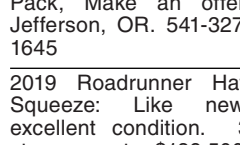
Freeman 370 Baler: Like new, only baled 27,000 bales, recent \$7,600 overhaul, new paint, hydro. \$20,000 OBO. Junction City, OR. 541-998-2429



(2) Freeman 330 Balers, \$4000 each. \$7,000 for both. Excellent Condition. Jacksonville, OR. 541-951-1913



2019 Mil-Stak PT2150 Big Bale Stacker, (12) 3x4, (8) 4x4 bales, 15,855 hours, \$78,000. Emmett, ID. Call or text Chris 541-810-8007; www.berrymachinery.com



(2) 270 Hydraulic Freeman Balers: Good shape with Gandy boxes, \$8500 each or \$15,000 both. Ritzville, WA. 509-659-0854



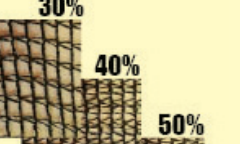
Case 8830 Swather, \$11,000. New Holland S1048 Bale Wagon, \$9000. 468 John Deere Baler, \$3500. Golden-dale, WA. 509-773-3925



John Deere 5830 Chopper: Forest Harvester, \$30,000. **New Holland 1440 Mower Conditioner,** \$10,000. Cloverdale, OR. 503-812-6360



Krone Baler: 1290 Big Pack, Make an offer. Jefferson, OR. 541-327-1645



2019 Roadrunner Hay Squeezer: Like new, excellent condition. 3 stage mast, \$189,500. Rickreall, OR. 503-930-1904

907 Nursery Equip. & Supplies

917 Orchard/Vineyard Equip.

RETIRING: HAY RAKES:
(2) Twinstar G2- \$22,000.
(3) Twinstar 2030- Rakes double frame, \$13,000.
(3) Harrell 8827: 12' Twinstar baskets, \$10,000.
12' Baskets, new teeth, extended frame, \$4,000.
10.5' Twinstar baskets, extended frame, \$4,000.

JOHN DEERE WINDROWER SWATHERS:
R450- 500R head, 1455 tractor hours, 1093 header hours, \$85,000.
4990- 995 16ft head with all Hay tools conversions equal to 500R head, 6411 tractor hours, low hour header, \$28,000.
4990- 995 16ft head with all Hay tools conversions equal to 500R head, 4332 tractor hours, low hour header, \$32,000.

BIG BALERS:
(4) **KRONE 1290 Big Packs- Serial #KBP12773090,** 56000 bales, \$25,000. **HDP HS- Serial #BP2Z933934,** 9000 bales, \$95,000. **HDP HS- Serial #KBP12885108,** 25054 bales, \$60,000. **HDP HS- Serial #KBP12874921,** 27284 bales, \$50,000. Connell, WA. Call/ text 509-282-2355

WANTED: Weiss Mcnair 824 Nut harvester or similar. 503-635-7873

ORCHARD & VINE EQUIPMENT

Duetz Allis 6260: 4WD, cab, front 3 point, \$8000. **Massey Ferguson 1533:** 4WD, cab, 900 hours, \$16,000. **Case 885:** 4WD, cab, \$8000. **Fords:** 3000, 3600, 4000 & 5000 2WD, diesel, power steering. Call for price. **Gearmore:** 300 gallon, PTO sprayer, \$10,000. **Gearmore Duster:** poly, 3 point, PTO, \$2000. **Schmeiser:** adjustable 5-6' 3 point, disc & roller, \$5000. **Domries:** 3 point disc, adjustable 6-8', \$6500. **Rears:** 100 gallon weed sprayers: PTO, 3 point, \$1,200. **Vine Star Gondolas:** 8 ton narrow & wide, \$6,500 each. **Vine Star:** PTO, olive or grape. Harvester/ bow rod, \$25,000 each. **Allis Chalmers:** 9' wheel disc & roller, good condition, \$5000. **Virismo:** 5-8' flail mowers & shredders. Acampo, CA. Call Dave 916-806-7431 to offer and details. **dave-taylor@sbcglobal.net**

NEW AND USED PARTS: for all models New Holland bale wagons. **Largest Inventory in North America.** Sod Busters Sales, Polson, MT. 877-735-2108 or 406-883-2118

#1 Balewagons: Buy, Sell, New Holland 2&3 wide self-propelled, pull-type models, parts, tires, manuals. Caldwell, ID. 208-880-2889 www.balewagon.com

2002 New Holland 1089 bale wagon, 3500 hours. Nice condition, \$85,000. **2002 New Holland 1089 bale wagon,** 1,652 hours. Sharp, \$95,000. Polson, MT. 877-735-2108, 406-249-8565

Baler, New Holland 575, shedded, hydraulic tensioner, 1/4 turn chute, \$7500 OBO. Enumclaw, WA. 360-825-6548

2012 John Deere D450 swather with 635D header, ONLY 720 hours, auto steer ready, \$59,000. Delivery available. Central, NV. 775-318-0072

RCO Baits
Gophers • Squirrels
Voles • Moles
Ask for your Capital Press Discount
Dealer Locator
1-800-214-2248
Harrisburg, OR \$160794

Looking for ORCHARD/VINEYARD PROPERTY? Go to Class. 570
Capital Press
CapitalPress.com
\$159454-1

John Deere W260 swather with 500R header, 781 hours, new BD crusher rollers, \$115,000. Delivery available. Central, NV. 775-318-0072

John Deere 8N, 27HP, 3 point, PTO, 70 hours on complete engine overhaul, very clean. Field parade ready. Many new or rebuilt parts, all bolt on metal removed, sandblasted, painted. Spare parts/ manual. Includes 1-16" 3-point plow. Photos, complete recent work list available. Delivery available \$3,675. Monmouth, OR. 503-623-4265

John Deere 16" rollover plow. Very good condition. \$2,350 Firm. Centralia, WA. Ken 360-269-0724, 360-736-7919

Heavy Duty Disc Hiller. Used only once for about 4 hours. 6ft adjustable tool bar; room to add other equipment. Great for Hemp or other row crops, \$1500. Carlton, OR. 971-241-8168

Case 1390: new tires, 1 owner, new paint, 60HP. Like new, 2000 hours. Ready to work, \$9500. Boring, OR. 503-380-1531

John Deere Tractors: 8530- 5418 hours, duals front and back, independent front axle, \$122,000. 8420- 5563 hours, new front rubber, \$75,000. 8520- 10,580 hours, 500 hours on re-built engine, new transmission at 8000 hours, flotation rubber, \$68,000. 8400- 9920 hours, Michelin Agri-Bib tires, \$55,000. 8400- 7250 hours, \$50,000. 4640- 10830 hours, with duals, \$18,000. 6125R- 5565 hours, \$48,000. 6400- 6270 hours, \$26,000. **Steiger Bearcat III ST225 tractor,** 5071 hours, extra weights, \$7,000. Connell, WA. Call/ text 509-282-2355

Jessee Machine Works: NUT HARVESTING EQUIPMENT
530-342-4379
JesseeMachineWorks.com

2016 Rears Pak Tank with foam marker kit, low hours \$3,200. Beaver-creek, OR. 520-300-1612

2016 Dion pull type forage harvester (chopper) with a 2019 corn/ hemp head, 150 hours on corn/ hemp head, extended chute for easy loading into a trailer or dump cart, \$65,000. Salem, OR. 503-580-4261

1996 Littau harvester, side row, wide tunnel, Christy power heads, aluminum tube, 3/8" rods, set up for raspberries/ blueberries, \$39,000. Brooks, OR. 503-991-6753

Portable Seed Cleaner. Includes a Multiquip 60kw generator, Westrup CW 1250 Debearder, Westrup 1500 Cleaner, Two 25-33 Disc Separators, Carter Day 24in. Aspirator. Self-contained and mounted on a fifth wheel trailer. Screenings trailers and feed augers ready to go. Seed pallets available, \$82,000. Rickreall, OR. 503-930-0792

PRICE REDUCED: New Ag Spray 110 gallon Tractor Sprayer. Hydraulic-driven spray pump. Spray boom with nozzles. Hose reel and spray gun. All manuals; many spare parts, \$3500 OBO. Packed on pallet. We'll load for pickup in Olympia, WA. 360-239-3126

2016 Dion pull type forage harvester (chopper) with a 2019 corn/ hemp head, 150 hours on corn/ hemp head, extended chute for easy loading into a trailer or dump cart, \$65,000. Salem, OR. 503-580-4261

920 Tractors

1988 Ford 7710: 18.4/ R34 Tires, 16 speed, 5410 hours, \$14,000. Aumsville, OR. 503-931-8781

1998 Ford NH6635: 13.6/ R34 Tires, 16 speed, 3942 hours, \$18,000. Aumsville, OR. 503-931-8781

2004 Challenger MT765B. 32" rubber, 5825 hours, \$60,000. Aumsville, OR. 503-931-8781

2004 John Deere 8400 Tractor. 8,581 hours. AgLeader auto-steer. 710/70R38 rear 600/60R28 front. 3 point; quickhitch. Very clean. Dealer maintained. \$60,000. Amity, OR. 503-932-0543

2014 John Deere 5100E Tractor with H260 loader, 100HP, quick hitch, hydraulic top link. 273 hours, excellent condition, \$45,000. Beaver-creek, OR. 520-300-1612

Attention: Wanted Kubota or John Deere, 4x4 compact tractor with loader/ equipment. Carlton, OR. 503-550-0094

International 1086 50% rubber, field ready, \$10,500. Jacksonville, OR. 541-951-1913

2002 New Holland TS100 Tractor: MFWD, FEL with grapple, all new tires, 5,182 hours, nice \$32,500. Polson, MT. 877-735-2108, 406-249-8565

Ford 8N, 27HP, 3 point, PTO, 70 hours on complete engine overhaul, very clean. Field parade ready. Many new or rebuilt parts, all bolt on metal removed, sandblasted, painted. Spare parts/ manual. Includes 1-16" 3-point plow. Photos, complete recent work list available. Delivery available \$3,675. Monmouth, OR. 503-623-4265

John Deere 16" rollover plow. Very good condition. \$2,350 Firm. Centralia, WA. Ken 360-269-0724, 360-736-7919

Heavy Duty Disc Hiller. Used only once for about 4 hours. 6ft adjustable tool bar; room to add other equipment. Great for Hemp or other row crops, \$1500. Carlton, OR. 971-241-8168

Case 1390: new tires, 1 owner, new paint, 60HP. Like new, 2000 hours. Ready to work, \$9500. Boring, OR. 503-380-1531

John Deere Tractors: 8530- 5418 hours, duals front and back, independent front axle, \$122,000. 8420- 5563 hours, new front rubber, \$75,000. 8520- 10,580 hours, 500 hours on re-built engine, new transmission at 8000 hours, flotation rubber, \$68,000. 8400- 9920 hours, Michelin Agri-Bib tires, \$55,000. 8400- 7250 hours, \$50,000. 4640- 10830 hours, with duals, \$18,000. 6125R- 5565 hours, \$48,000. 6400- 6270 hours, \$26,000. **Steiger Bearcat III ST225 tractor,** 5071 hours, extra weights, \$7,000. Connell, WA. Call/ text 509-282-2355

Jessee Machine Works: NUT HARVESTING EQUIPMENT
530-342-4379
JesseeMachineWorks.com

2016 Rears Pak Tank with foam marker kit, low hours \$3,200. Beaver-creek, OR. 520-300-1612

2016 Dion pull type forage harvester (chopper) with a 2019 corn/ hemp head, 150 hours on corn/ hemp head, extended chute for easy loading into a trailer or dump cart, \$65,000. Salem, OR. 503-580-4261

PRICE REDUCED: New Ag Spray 110 gallon Tractor Sprayer. Hydraulic-driven spray pump. Spray boom with nozzles. Hose reel and spray gun. All manuals; many spare parts, \$3500 OBO. Packed on pallet. We'll load for pickup in Olympia, WA. 360-239-3126

2016 Dion pull type forage harvester (chopper) with a 2019 corn/ hemp head, 150 hours on corn/ hemp head, extended chute for easy loading into a trailer or dump cart, \$65,000. Salem, OR. 503-580-4261

1996 Littau harvester, side row, wide tunnel, Christy power heads, aluminum tube, 3/8" rods, set up for raspberries/ blueberries, \$39,000. Brooks, OR. 503-991-6753

Portable Seed Cleaner. Includes a Multiquip 60kw generator, Westrup CW 1250 Debearder, Westrup 1500 Cleaner, Two 25-33 Disc Separators, Carter Day 24in. Aspirator. Self-contained and mounted on a fifth wheel trailer. Screenings trailers and feed augers ready to go. Seed pallets available, \$82,000. Rickreall, OR. 503-930-0792

PRICE REDUCED: New Ag Spray 110 gallon Tractor Sprayer. Hydraulic-driven spray pump. Spray boom with nozzles. Hose reel and spray gun. All manuals; many spare parts, \$3500 OBO. Packed on pallet. We'll load for pickup in Olympia, WA. 360-239-3126

2016 Dion pull type forage harvester (chopper) with a 2019 corn/ hemp head, 150 hours on corn/ hemp head, extended chute for easy loading into a trailer or dump cart, \$65,000. Salem, OR. 503-580-4261

1996 Littau harvester, side row, wide tunnel, Christy power heads, aluminum tube, 3/8" rods, set up for raspberries/ blueberries, \$39,000. Brooks, OR. 503-991-6753

Portable Seed Cleaner. Includes a Multiquip 60kw generator, Westrup CW 1250 Debearder, Westrup 1500 Cleaner, Two 25-33 Disc Separators, Carter Day 24in. Aspirator. Self-contained and mounted on a fifth wheel trailer. Screenings trailers and feed augers ready to go. Seed pallets available, \$82,000. Rickreall, OR. 503-930-0792

PRICE REDUCED: New Ag Spray 110 gallon Tractor Sprayer. Hydraulic-driven spray pump. Spray boom with nozzles. Hose reel and spray gun. All manuals; many spare parts, \$3500 OBO. Packed on pallet. We'll load for pickup in Olympia, WA. 360-239-3126

2016 Dion pull type forage harvester (chopper) with a 2019 corn/ hemp head, 150 hours on corn/ hemp head, extended chute for easy loading into a trailer or dump cart, \$65,000. Salem, OR. 503-580-4261

920 Tractors

1988 Ford 7710: 18.4/ R34 Tires, 16 speed, 5410 hours, \$14,000. Aumsville, OR. 503-931-8781

1998 Ford NH6635: 13.6/ R34 Tires, 16 speed, 3942 hours, \$18,000. Aumsville, OR. 503-931-8781

2004 Challenger MT765B. 32" rubber, 5825 hours, \$60,000. Aumsville, OR. 503-931-8781

2004 John Deere 8400 Tractor. 8,581 hours. AgLeader auto-steer. 710/70R38 rear 600/60R28 front. 3 point; quickhitch. Very clean. Dealer maintained. \$60,000. Amity, OR. 503-932-0543

2014 John Deere 5100E Tractor with H260 loader, 100HP, quick hitch, hydraulic top link. 273 hours, excellent condition, \$45,000. Beaver-creek, OR. 520-300-1612

Attention: Wanted Kubota or John Deere, 4x4 compact tractor with loader/ equipment. Carlton, OR. 503-550-0094

International 1086 50% rubber, field ready, \$10,500. Jacksonville, OR. 541-951-1913

2002 New Holland TS100 Tractor: MFWD, FEL with grapple, all new tires, 5,182 hours, nice \$32,500. Polson, MT. 877-735-2108, 406-249-8565

Ford 8N, 27HP, 3 point, PTO, 70 hours on complete engine overhaul, very clean. Field parade ready. Many new or rebuilt parts, all bolt on metal removed, sandblasted, painted. Spare parts/ manual. Includes 1-16" 3-point plow. Photos, complete recent work list available. Delivery available \$3,675. Monmouth, OR. 503-623-4265

John Deere 16" rollover plow. Very good condition. \$2,350 Firm. Centralia, WA. Ken 360-269-0724, 360-736-7919

Heavy Duty Disc Hiller. Used only once for about 4 hours. 6ft adjustable tool bar; room to add other equipment. Great for Hemp or other row crops, \$1500. Carlton, OR. 971-241-8168

Case 1390: new tires, 1 owner, new paint, 60HP. Like new, 2000 hours. Ready to work, \$9500. Boring, OR. 503-380-1531

John Deere Tractors: 8530- 5418 hours, duals front and back, independent front axle, \$122,000. 8420- 5563 hours, new front rubber, \$75,000. 8520- 10,580 hours, 500 hours on re-built engine, new transmission at 8000 hours, flotation rubber, \$68,000. 8400- 9920 hours, Michelin Agri-Bib tires, \$55,000. 8400- 7250 hours, \$50,000. 4640- 10830 hours, with duals, \$18,000. 6125R- 5565 hours, \$48,000. 6400- 6270 hours, \$26,000. **Steiger Bearcat III ST225 tractor,** 5071 hours, extra weights, \$7,000. Connell, WA. Call/ text 509-282-2355

Jessee Machine Works: NUT HARVESTING EQUIPMENT
530-342-4379
JesseeMachineWorks.com

2016 Rears Pak Tank with foam marker kit, low hours \$3,200. Beaver-creek, OR. 520-300-1612

2016 Dion pull type forage harvester (chopper) with a 2019 corn/ hemp head, 150 hours on corn/ hemp head, extended chute for easy loading into a trailer or dump cart, \$65,000. Salem, OR. 503-580-4261

PRICE REDUCED: New Ag Spray 110 gallon Tractor Sprayer. Hydraulic-driven spray pump. Spray boom with nozzles. Hose reel and spray gun. All manuals; many spare parts, \$3500 OBO. Packed on pallet. We