

826 Organic
900 Bales of Organic Haylage: good quality, \$55/ bale. Scio, OR. 503-932-1005

828 Misc for Sale
STRAWBERRIES: Ready to PICK. Tillamook Variety. Huge orders available. \$15/ 1/2 flat. Winlock, WA. 360-262-9118



★HEMP★
Custom plastic laying and hemp planting with water wheel planter 3 - 6' spaced rows at a time with many choices for in row spacing on plants (Rain-Flo Equipment). All GPS done with very modern equipment and latest technology. Call ASAP to secure your planting date with our professional team! 503-437-4833

CBD and CBG Clones available now. The Oregon Hemp Farmer. Silverton, OR. 503-873-6774; 503-551-5809; theoreganhempfarmer@gmail.com

New Holland FX28 Forage Chopper. Great condition, 1600 hours, 4 row corn head, 8' grass head, \$65,000 OBO. Cornelius, OR. 503-341-4289



Hemp Starts Available Now. Super Fair Price. Price based on Quantity. Ask us about our Hemp Flower for sale too! St. Paul, OR. 503-409-9090

Hemp Property for lease. Approximately 50+ acres in 2 adjacent separate lots, each lot has well, electricity and easy field access. Class II soil. Was in hemp production in 2019. Located in Junction City Oregon. All terms are negotiable. Junction city, OR. 541-912-2940

869 Livestock Equip. & Supplies
Livestock Panels: 16' (6) rail, (3) brace, \$117 each. 12' panels, (6) rail, (2) brace, \$88. Bow gates, all lengths and sizes. These panels are new Green color, hundreds available. **Heavy 16' Feeder Panels,** \$330 each. La Grande, OR. 541-805-9279, 541-963-6258



Calgary Stampede Manual Cattle Squeeze Chute: right hand controls with sternal bar, portable moving cart. Good condition, \$5000. Rock Island, WA. 509-630-2875

887 Irrigation Equip.

869 Livestock Equip. & Supplies
Highway guard rail for cattle pens. Roseburg, OR. 541-944-3878



2012 Supreme 1200TTM Feed Truck. Allison transmission, 2 speed auxiliary. 836 Hours. One owner. Excellent Condition, \$210,000. Emmett, ID. Call or text Chris 541-810-8007; www.berrymachinery.com



Grain Bin: diameter 6ft; overall height 11ft+; \$1500 OBO. Aurora, OR. 503-803-0912



New IA 24' portable hay feeder with 8 hole wheels swing away tongue inner bunk with 35 outer station openings. Buy 2 or More For \$3,995 each. Bend, OR. 541-548-7185 mtcsales.net

Filson Cattle Squeeze Chute, \$1800. New paint job. Call for pictures. Salem, OR. 503-551-1578

872 Dairy Eq. & Supplies

Complete Milking System: 4000 gallon Mueller tank, (3) 5HP 3 phase compressors, 10HP 3 phase rotary vane pump, 3in pipe line, receiver, transfer pump, pulsators. Germania model F machines. Spare 3 phase motor, \$25,000 for all. Will sell separately. Meridian, ID. 208-870-9979



400 bu. • BUY OR RENT Call Scott at Barr-Tech Compost/Organics Recycling Authorized Dealer of PPK RITE Spreaders **509-590-0437** www.Barr-Tech.net Sprague, WA. 5174527-21

SILAGE WRAP
Better forage for your livestock



541-369-2850
26890 Powerline Rd Halsey, OR 97348



887 Irrigation Equip.

872 Dairy Eq. & Supplies
Polydome Calf Nursery: Hutches available for various climates. Western Polydome, Inc. Monroe, WA. 800-822-5837

875 Tanks & Storage
FUEL TANKS: Used single wall tanks 1500 & 2000 gallons. New 1000, 2000, 3000 and 4000, etc. gallon double walled tanks. Salem, OR. Peter 503-881-9803



GENERATORS: Used, low hour takeouts, 20kW to 2000kW, diesel, propane, & natural gas. Cooperstown, ND. We ship nationwide. 701-371-9526 or 701-367-4305 abrahamindustrial.com

887 Irrigation Equip.

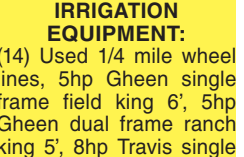


2008 MultiQuip 6in. self priming pump. Self contained on trailer. Deutz 3 cylinder diesel. Well maintained, very clean and operates like new, \$8900. Located in Twin Falls ID. Call 208-613-0050



Bauer Rain Star Big gun sprinkler, 4" hose, piston driven, \$9000. Gaston, OR. 503-329-4365

(57) Used Pivots: Engines, pumps. Garden Valley, ID. Call Mike at 208-420-1480, or see www.pivotsplus.com



IRRIGATION EQUIPMENT:
(14) Used 1/4 mile wheel lines, 5hp Gheen single frame field king 6', 5hp Gheen dual frame ranch king 5', 8hp Travis single frame 5', 4" & 5" pipe, \$6000 each. Various mover frames also available. Dixon, CA. 800-734-8859



Westinghouse IRRIGATION/ HYDRANT PUMP assembly: 100hp, 480/277V, 3ph 1500 gpm, 150"Lx55"Wx45"H, soft start controller/ panel, \$6400 OBO. Ferndale, WA. 360-380-2907

There Are Always Great Deals In Capital Press Classifieds. Call Now And Add Yours! **1-800-882-6789**

887 Irrigation Equip.
WANTED: Motor driven irrigation pump. Gas or Diesel. 800GPM, 100PSI. Please call! Phone was broken: 701-570-5600

WANTED: 2" or 3" used irrigation pipe. Rickreall, OR. Call or text 503-551-4638

25HP Goulds 12 stage well pump, 350GPM, 120' of 6" column, \$7500. Brand New. Malin, OR. 541-892-2117

4000' gated pipe 12" to 4". 300' of aluminum gated pipe; 8" to 6". 50 cents/ foot. Mesa, WA. 509-531-5399
(20) 1/4 mile Wheel Lines with movers. 4" and 5", 48" to 72" wheel diameter, Wade and Gheen. Disassembled and ready to load. \$4,000+ each. Salem, OR. 503-838-3779

Pivots: All brands. No rust. Plus buried wire. Call Keizer, OR. Cell 503-881-3232

Drip Tube: .26gph at 30' centers, 350 rolls. 500 rolls of drip tube 12" spaced emitters suitable for blueberries. \$75 per roll. Lafayette, OR. 503-437-4833

WANTED: irrigation main line, 5", 6" and 8" supply hydrants. Wade rain and/ or Ringlock. Salem, OR. or surrounding area. 503-437-4833

Used Valley 600 circle, 7 stands, 6-5/8" pipe, new select control panel, new pipe on corner, 1000 8' system, 174' corner, 82' overhang, \$17,000. Near Pasco, WA. 509-380-7171

Frost Protection
H₂S Pipe & Supply
Authorized Factory Dealer of **Orchard-Rite® Wind Machines**
598 Baseline, Cornelius, OR
Office: 503-357-4217
info@hpspipe.com
CCBF# 120254
\$164579-1



High Quality Brass Vyrsa Impact Sprinklers
1/2" Part Circle \$15.60
1/2" Full Circle \$11.70
3/4" Part Circle \$25.74
3/4" Full Circle \$14.88
Call For Bulk Pricing and FREE Brochure!
WaterTec
(360) 393-4923
www.watertecna.com
Lynden, WA
\$19780-1

899 Heavy & Indust. Eq.

887 Irrigation Equip.
Thompson 8in. Towable Diesel Pump. Perfect for dewatering or irrigation use. Self priming. 4.9 ACTUAL HOURS, 6 Cylinder Deutz diesel. One owner former Municipal pump that has very low hours and is in like new condition. It's better than a new one. \$14,900. Located in Twin Falls ID. Call 208-613-0050



Bauer 950'x3.7" hard hose hydraulic irrigator. Nelson 150 Gun. Make Offer. Salem, OR. 503-551-1578

890 Packing/ Processing Eq.
Used Super Sacks. Used once. Stovepipe Top: \$3. Opened Top: \$5. Salem, OR. 503-932-8598

LOOK!
100 gallon, stainless steel, steam distiller. 220 volt. Like new. \$16,000. Halsey, OR. 541-760-9112

893 Logging Equip.
1996 EX200-5 Hitachi Excavator: thumb, excellent condition, all original, 7500 hours, \$29,000. Creswell, OR. 541-912-7807



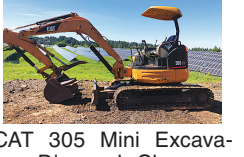
896 Forklifts
Champ Forklift for parts. Model 350-80. Good engine and hydraulic system, good rubber, 30ft lift, 8000 lb unit. Has transmission problem, \$1500. Turlock, CA. Gary 209-606-3094



899 Heavy & Indust. Eq.
1995 FORD 555D Backhoe: thumb, 3 buckets, 4x4, loader, asking \$24,950. Sandy, OR. Call Pepe: 503-544-3232; Call Pat: 503-407-9062



CAT 305 Mini Excavator, Dig and Clean up Bucket, Thumb, Blade, Steel Track with Pads. Asking \$22,500. Sandy, OR. Call Pepe: 503-544-3232; Call Pat: 503-407-9062

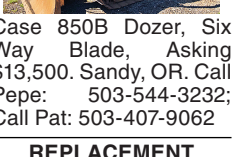


2001 Sullair 185 CFM air compressor. John Deere Diesel. Low hours, well maintained and work ready, \$6500. Located in Twin Falls ID. Call 208-613-0050

899 Heavy & Indust. Eq.
1996 EX200-5 Hitachi Excavator: thumb, excellent condition, all original, 7500 hours, \$29,000. Creswell, OR. 541-912-7807



D-6 H U-dozer with tilt and ripper, near new engine and hydraulic pump, \$79,500. Salem, OR. 503-362-3055



Case 850B Dozer, Six Way Blade, Asking \$13,500. Sandy, OR. Call Pepe: 503-544-3232; Call Pat: 503-407-9062

REPLACEMENT DECAL SETS
Construction, Forestry & Ag Equipment. Fast, Knowledgeable, Reliable Service. 215-536-5339 email: info@CustomServicesCompany.com
Thousands of sets, Old & New, in our digital inventory. www.QuipCal.com



2017 Deere 544K-II 1680 hours, quick attach bucket, real nice low hour machine. Ready to work. \$135,000. Cove, OR. 541-910-8024



CAT 623-B: Self-loading scraper, good condition, Reduced \$29,500. Salem, OR. 503-362-3055

CEC Sreenit: 5x12 screen, \$50,000. Pilot Rock, OR. 541-969-8645

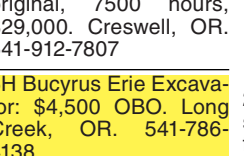


MASSEY FERGUSON 1160 with 232 loader, 4x4, 41HP Isuzu, 2200 hours, mower deck. Asking \$12,950. Sandy, OR. Call Pepe: 503-544-3232; Call Pat: 503-407-9062

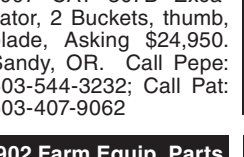


2001 Sullair 185 CFM air compressor. John Deere Diesel. Low hours, well maintained and work ready, \$6500. Located in Twin Falls ID. Call 208-613-0050

899 Heavy & Indust. Eq.
1996 EX200-5 Hitachi Excavator: thumb, excellent condition, all original, 7500 hours, \$29,000. Creswell, OR. 541-912-7807



5H Bucyrus Erie Excavator: \$4,500 OBO. Long Creek, OR. 541-786-4138



1997 CAT 307B Excavator, 2 Buckets, thumb, blade, Asking \$24,950. Sandy, OR. Call Pepe: 503-544-3232; Call Pat: 503-407-9062

902 Farm Equip. Parts



902 Farm Equip. Parts



ASSOCIATED TRACTOR SERVICE INC.
NEW • USED • REBUILT PARTS PARTS • SERVICE • EQUIPMENT
PARTS ★ SERVICE ★ EQUIPMENT
• Used Parts
• National Locator Services
• BEGE Hydraulic Pumps & Parts
CALL NOW & CHECK OUR INVENTORY
Satisfaction Guaranteed Since 1954
800-735-1301 • 209-466-3003
1323 W. Charter Way, Stockton, CA 95206-1110

BIG TRACTOR PARTS, INC.
~ GEARED FOR THE FUTURE ~

STEIGER TRACTOR SPECIALIST
• 1. We are your source for new & used Steiger drivetrain parts Series 1-9300 Series.
• 2. We rebuild Spicer manual transmissions, Fugli power shift transmissions, dropboxes & axle with ONE YEAR WARRANTY!
• 3. We now rebuild computer control boxes for Steiger tractors 1982-1999.

800-982-1769
www.bigtractorparts.com

NEW, USED, AND REMAN PARTS
TOLL FREE: 1-877-928-1646
32427 OLD HWY 34, TANGENT, OR 97389

Combine Parts
Rebuild Kits
Seats w/Air Suspension \$1,025
JD 4010, 4020 Clutch Kits \$715
Reman Engines for Case/IH, John Deere, and Ford
SALVAGED TRACTORS
Farmland Tractor Supply
Parts@Farmlandtractor.com
5157869-1

ERNST IRRIGATION
GOT TRAVELERS?
NEW TRAVELERS:
• 4"ID X 1400ft w/ID4045 engine and Cornell 3RB pump
• 4"ID X 1400ft w/8hp Honda Engine Drive
• 3.7"ID X 700ft w/5.5hp Honda Engine Drive
• 3"ID X 1100ft w/5.5hp Honda Engine Drive
Ask About USED MACHINES in Stock
www.ErnstIrrigation.com • (503) 633-1111
20179 Main St., St. Paul, OR 97137 • Mon-Fri 8am-5pm; Sat 8am-2pm

899 Heavy & Indust. Eq.

899 Heavy & Indust. Eq.

899 Heavy & Indust. Eq.

Don't look any further! Sell or buy what you need in Capital Press!
1-800-882-6789
FAX (503) 370-4383
AD DEADLINES: Classified Display Ads, Weds. @ 10AM
Classified Line Ads, Weds. @ Noon
CapitalPress.com

EARTH MOVING EQUIPMENT FOR RENT
• CAT 623 SCRAPERS
• CAT 815 ROLLER
• CAT ROAD GRADER
• 3.5 YD. LOADER
Rent by the week or month. Great rates, scheduling now!
Call Rob Weathers 503-931-0512

BigIRON HEAVY EQUIPMENT and AG REPAIRS
Complete Mobile Repair Services
- PORTABLE LINE BORING -
Scott & Eddy Carroll • 509-770-5560
BigIronRepair@odessaoffice.com
5191982-1

R & G MACHINING AND ENGINE PARTS
COMPLETE DIESEL MACHINE SHOP AND TRUCK REPAIR
MULINO, OREGON • SHOP: 503-829-6038 • NATIONWIDE: 1-800-823-6038
We Absolutely, Positively Have The Best Remanufactured Engines Available Anywhere!
Huge Inventory • Expert Technical Assistance

ENGINES BY R&G MACHINING		REBUILT DIESEL L/B ENGINES	
FORD	CHRYSLER & JEEP	CUMMINS	MITSUBISHI & NISSAN
300.....\$1,595	4.0-4.2.....\$1,895	3.9-4BT.....\$3,395	Starting at.....\$5,995
4.6-5.4.....\$2,895	318-360.....\$1,899	5.9 '88-'02.....\$3,695	YANMAR & KUBOTA
302-351-400.....\$1,895	440.....\$2,899	5.9 '03 & up.....\$3,895	Starting at.....\$4,495
360-390.....\$1,995	488 V10.....\$3,395	6.7 C/R.....\$4,195	BOBCAT & PEUGEOT
415-V10.....\$3,295	TOYOTA	6.0 P/S.....\$4,595	Starting at.....\$3,995
429.....\$2,499	22RE.....\$1,395	6.4 P/S.....\$5,295	DOOSAN & TAKEUCHI
460 '72-'92.....\$1,899	NEW HOLLAND DIESEL OR GAS ENGINES	6.7 P/S.....\$6,395	Starting at.....\$5,995
	Starting at.....\$2,899 Exch.	7.3 P/S.....\$3,895	CASE, IH, & JCB
		6.2-6.5.....\$3,699	Starting at.....\$3,995
		JOHN DEERE	HINO & IVECO
		Starting at.....\$5,995	Starting at.....\$5,995
		KOBELCO, KOMATSU, HITACHI	CATERPILLAR & HYUNDAI
		Starting at.....\$5,995	Starting at.....\$5,995
		PERKINS & ISUZU	
		Starting at.....\$5,995	

Call on other gas or diesel engines. We are a major rebuilder on all diesel brands. All work done in house!
IN BUSINESS SINCE 1975.
OVER 250 ENGINES & 450 CYLINDER HEADS IN STOCK!
We have a complete line of import diesels and obsolete diesels for your mini excavators or skidsteers. We work and repair all brands!
Need Engine Parts, Gas or Diesel - Check it out:
www.ebay.com/str/grumpysperformancecenter
5183280-1

HAYMAKER HEAVEN R.I.P. REASONABLE IMPLEMENT PRICING
FRESH IN FOR PARTS ONLY
JD SWATHER/BALERS

SWATHERS	830	466
4890	800	348
4990	945	347
3830	Moco	346
3430	935	337
2420	Moco	336
2320	1380	224
2280	1470	216
2270	BALERS	214
2250	468	24T
880	467	14T

LOTS OF TRACTORS & COMBINES TOO!
Nyssa Tractor & Implement
Celebrating 30 years in the agricultural machinery business.
Our yard has 5 miles of road, with machinery on both sides.
FREE TOURS GIVEN DAILY.
Call Toll Free: **(833) 372-4020**
www.nyssatractor.com
sales@nyssatractor.com
Nyssa, OR
5193741-1