

**887 Irrigation Equip.**

WANTED: Motor driven irrigation pump. Gas or Diesel. 800GPM, 100PSI. Please call! Phone was broken: 701-570-5600

**887 Irrigation Equip.**



Used Valley 600 circle, 7 stands, 6-5/8" pipe, newer select control panel, new pipe on corner, 1000 8' system, 174' corner, 82' overhang, \$17,000. Near Pasco, WA. 509-380-7171

Cadman 3750XL hard-nose sprinkler reel, \$16,500. Rickreall, OR. 503-838-3740, 503-383-6722

**887 Irrigation Equip.**



Bauer Rain Star Big gun sprinkler, 4" hose, piston driven, \$9000. Gaston, OR. 503-329-4365

**887 Irrigation Equip.**

25HP Goulds 12 stage well pump, 350GPM, 120" of 6" column, \$7500. Brand New. Malin, OR. 541-892-2117

4000' gated pipe 12" to 4". 300' of aluminum gated pipe; 8" to 6". 50 cents/foot. Mesa, WA. 509-531-5399

(20) 1/4 mile Wheel Lines with movers. 4" and 5", 48" to 72" wheel diameter, Wade and Gheen. Disassembled and ready to load. \$4,000+ each. Salem, OR. 503-838-3779

Drip Tube: .26gph at 30" centers, 350 rolls. 500 rolls of drip tube 12" spaced emitters suitable for blueberries. \$75 per roll. Lafayette, OR. 503-437-4833



2008 MultiQuip 6in. self priming pump. Self contained on trailer. Deutz 3 cylinder diesel. Well maintained, very clean and operates like new, \$8900. Located in Twin Falls ID. Call 208-613-0050

100+ hook & latch 3" hand line; 1' risers & sprinklers. Volume discount option or per pipe price \$50. Forest Grove, OR. 503-799-2267



**IRRIGATION EQUIPMENT:**  
(14) Used 1/4 mile wheel lines, 5hp Gheen single frame field king 6', 5hp Gheen dual frame ranch king 5', 8hp Travis single frame 5', 4" & 5" pipe, \$6000 each. Various mover frames also available. Dixon, CA. 800-734-8859

WANTED: 2" or 3" used irrigation pipe. Rickreall, OR. Call or text 503-551-4638



Westinghouse IRRIGATION/ HYDRANT PUMP assembly: 100hp, 480/277v, 3ph 1500 gpm, 150"Lx55"Wx45"H, soft start controller/ panel, \$6400 OBO. Ferndale, WA. 360-380-2907



**High Quality Brass Vysa Impact Sprinklers**  
1/2" Part Circle \$15.60  
1/2" Full Circle \$11.70  
3/4" Part Circle \$25.74  
3/4" Full Circle \$14.88  
Call For Bulk Pricing and FREE Brochure!

**WaterTec**  
(360) 393-4923  
www.watertecna.com  
Lynden, WA

**IT'S EASY TO ADVERTISE WITH CAPITAL PRESS**

To place your line classified ad, call toll-free:

**1-800-882-6789**  
or go ONLINE  
24/7/365  
CapitalPress.com

**Need to sell something?**

Consider that more buyers are searching Capital Press web listings.

**Call us today!**  
Our sales reps will schedule your ad for immediate online AND once a week print. Or you can post your ad online 24/7/365.

**Capital Press**  
EMPOWERING PRODUCERS OF FOOD & FIBER

**800-882-6789**  
CapitalPress.com

**899 Heavy & Indust. Eq.**

**EARTH MOVING EQUIPMENT FOR RENT**

- CAT 623 SCRAPERS
- CAT 815 ROLLER
- CAT ROAD GRADER
- 3.5 YD. LOADER

Rent by the week or month. Great rates, scheduling now!

Call Rob Weathers  
**503-931-0512**

**Your Leading Source for Pump & Motor Repairs**

**H S Pipe & Supply**  
On Call 24 hours!

On Site or In-house • Motor Rewinds  
Ag • Commercial • Industrial

598 Baseline, Cornelius, OR 97113  
Phone (503) 357-4217 • CCB#120254  
www.hspipe.com  
info@hspipe.com

**WATER MASTER SERIES AND EVERGREEN**

**SUPERIOR SERVICE & DESIGN**

- All your needs for irrigation parts service
- We build custom equipment for your special needs
- Hose replacements & fusion repairs
- Transport Tanks • Rental Returns & Used Equipment
- Structural and steel available for purchase

**VALLEY WORKMAN**

**Truck Equipment**

- Full Service
- Alterations
- Dump Bodies • Hoists
- Farmbeds • Flatbeds

**VALLEY FAB**  
CORP

10910 Portland Rd. NE • Brooks, OR  
Call: 503-792-3739 • Fax: 503-792-3738

**899 Heavy & Indust. Eq.**

**R & G MACHINING AND ENGINE PARTS**

COMPLETE DIESEL MACHINE SHOP AND TRUCK REPAIR  
MULINO, OREGON • SHOP: 503-829-6038 • NATIONWIDE: 1-800-823-6038

We Absolutely, Positively Have The Best Remanufactured Engines Available Anywhere!  
Huge Inventory • Expert Technical Assistance

ENGINES BY R&G MACHINING		REBUILT DIESEL L/B ENGINES	
FORD	CHRYSLER & JEEP	CUMMINS	MITSUBISHI & NISSAN
300.....\$1,595	4.0-4.2.....\$1,895	3.9-4BT.....\$3,395	Starting at.....\$5,995
4.6-5.4.....\$2,895	318-360.....\$1,899	5.9 '88-'02.....\$3,695	<b>YANMAR &amp; KUBOTA</b>
302-351-400.....\$1,895	440.....\$2,899	5.9 '03 & up.....\$3,895	Starting at.....\$4,495
360-390.....\$1,995	488 V10.....\$3,395	6.7 C/R.....\$4,195	<b>BOBCAT &amp; PEUGEOT</b>
415-V10.....\$3,295	<b>TOYOTA</b>	6.0 P/S.....\$4,595	Starting at.....\$3,995
429.....\$2,499	22RE.....\$1,395	6.4 P/S.....\$5,295	Starting at.....\$3,995
460 '72-'92.....\$1,899	<b>NEW HOLLAND DIESEL OR GAS ENGINES</b>	6.7 P/S.....\$6,395	Starting at.....\$5,995
	Starting at.....\$2,899 Exch.	7.3 P/S.....\$3,895	Starting at.....\$5,995
		<b>GM</b>	<b>CASE, IH, &amp; JCB</b>
		6.2-6.5.....\$3,699	Starting at.....\$3,995
		<b>JOHN DEERE</b>	<b>HINO &amp; IVECO</b>
		Starting at.....\$5,995	Starting at.....\$5,995
		<b>KOBELCO, KOMATSU, HITACHI</b>	Starting at.....\$5,995
		Starting at.....\$5,995	<b>CATERPILLAR &amp; HYUNDAI</b>
		<b>PERKINS &amp; ISUZU</b>	Starting at.....\$5,995
		Starting at.....\$5,995	

Call on other gas or diesel engines. We are a major rebuilder on all diesel brands. All work done in house!

**IN BUSINESS SINCE 1975.**

**OVER 250 ENGINES & 450 CYLINDER HEADS IN STOCK!**  
We have a complete line of import diesels and obsolete diesels for your mini excavators or skidsteers. We work and repair all brands!

**Need Engine Parts, Gas or Diesel - Check it out:**  
www.ebay.com/str/grumpysperformancecenter

**Need Engine Parts, Gas or Diesel - Check it out:**  
www.ebay.com/str/grumpysperformancecenter

**887 Irrigation Equip.**

Pivots: All brands. No rust. Plus buried wire. Call Keizer, OR. Cell 503-881-3232

WANTED: irrigation main line, 5", 6" and 8" supply hydrants. Wade rain and/ or Ringlock. Salem, OR, or surrounding area. 503-437-4833

**890 Packing/ Processing Eq.**

Used Super Sacks. Used once. Stovepipe Top: \$3. Opened Top: \$5. Salem, OR. 503-932-8598

**LOOK!**

100 gallon, stainless steel, steam distiller. 220 volt. Like new. \$16,000. Halsey, OR. 541-760-9112

**893 Logging Equip.**

1996 EX200-5 Hitachi Excavator: thumb, excellent condition, all original, 7500 hours, \$29,000. Creswell, OR. 541-912-7807

**896 Forklifts**

Champ Forklift for parts. Model 350-80. Good engine and hydraulic system, good rubber, 30ft lift, 8000 lb unit. Has transmission problem, \$1500. Turlock, CA. Gary 209-606-3094

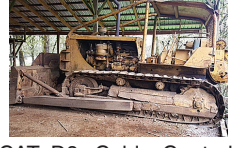


CAT GPL-40 9000lb lift 4356 hours, 148 lift, side shift, pneumatic tires, propane 48" forks, \$7950. McMinnville, OR. Call/ Text 503-550-7625 www.SpringHollowEquip.com

**899 Heavy & Indust. Eq.**



Case 850B Dozer, Six Way Blade, Asking \$13,500. Sandy, OR. Call Pepe: 503-544-3232; Call Pat: 503-407-9062



CAT D8: Cable Control, 1960s era, pony motor. Great workhorse, \$5500. Junction City, OR. 503-877-8200



1997 CAT 307B Excavator, 2 Buckets, thumb, blade, Asking \$24,950. Sandy, OR. Call Pepe: 503-544-3232; Call Pat: 503-407-9062



(2) 2014 Case TV380 Skidsteers, GP Bucket, Asking \$24,950.00 each. Sandy, OR. Call Pepe: 503-544-3232; Call Pat: 503-407-9062



1995 FORD 555D Backhoe: thumb, 3 buckets, 4x4, loader, asking \$24,950. Sandy, OR. Call Pepe: 503-544-3232; Call Pat: 503-407-9062



907 Nursery Equip. & Supplies



907 Nursery Equip. & Supplies



907 Nursery Equip. & Supplies

**899 Heavy & Indust. Eq.**



2006 Takeuchi TB125, 6150 Hours, (2) 1', 18", 30" buckets, Good Rubber. \$10,000. Salem, OR. Call Bill Martinak 503-931-5261



2005 Takeuchi TB135, 4826HRS. Newer Motor, 18", 24", 36" bucket, Good Rubber. \$8,000. Salem, OR. Call Bill Martinak 503-931-5261



CAT 305 Mini Excavator, Dig and Clean up Bucket, Thumb, Blade, Steel Track with Pads. Asking \$22,500. Sandy, OR. Call Pepe: 503-544-3232; Call Pat: 503-407-9062

**REPLACEMENT DECAL SETS**

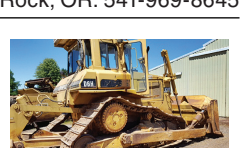
Construction, Forestry & Ag Equipment. Fast, Knowledgeable, Reliable Service. 215-536-5339 email: info@CustomServicesCompany.com  
Thousands of sets, Old & New, in our digital inventory. www.QuipCal.com



2017 Deere 544K-II 1680 hours, quick attach bucket, real nice low hour machine. Ready to work. \$135,000. Cove, OR. 541-910-8024



CAT 623-B: Self-loading scraper, good condition, Reduced \$29,500. Salem, OR. 503-362-3055



**D-6 H U-dozer** with tilt and ripper, near new engine and hydraulic pump, \$79,500. Salem, OR. 503-362-3055



KOMATSU D32E-1 Dozer - 6 way, brush rake, ripper, 3700 hrs, asking \$29,950. Sandy, OR. Call Pepe: 503-544-3232; Call Pat: 503-407-9062



1995 FORD 555D Backhoe: thumb, 3 buckets, 4x4, loader, asking \$24,950. Sandy, OR. Call Pepe: 503-544-3232; Call Pat: 503-407-9062

**907 Nursery Equip. & Supplies**



**907 Nursery Equip. & Supplies**



**907 Nursery Equip. & Supplies**

**899 Heavy & Indust. Eq.**



MASSEY FERGUSON 1160 with 232 loader, 4x4, 41HP Isuzu, 2200 hours, mower deck. Asking \$12,950. Sandy, OR. Call Pepe: 503-544-3232; Call Pat: 503-407-9062



2001 Sullair 185 CFM air compressor. John Deere Diesel. Low hours, well maintained and work ready, \$6500. Located in Twin Falls ID. Call 208-613-0050

**902 Farm Equip. Parts**

**Nyssa Tractor & Implement**

Our yard has 5 miles of road, the rest is farm machinery & parts.

www.nyssatractor.com  
Toll Free (833) 372-4020  
Nyssa, OR

**NEW & USED OLIVER & CLETRAC**  
Crawler Parts Are Our Specialty

**ZIMMERMAN OLIVER-CLETRAC**  
1450 Diamond Station Rd. • Ephrata, PA 17522

**717-738-2573**  
Fax 717-733-3529  
www.olivercletrac.com

**BIG TRACTOR PARTS, INC.**  
~ GEARED FOR THE FUTURE ~

**STEIGER TRACTOR SPECIALIST**

- We are your source for new & used Steiger drivetrain parts Series 1-9300 Series.
- We rebuild Spicer manual transmissions, Fugit power shift transmissions, dropboxes & axle with ONE YEAR WARRANTY!
- We now rebuild computer control boxes for Steiger tractors 1982-1999.

**800-982-1769**  
www.bigtractorparts.com

**NEW, USED, AND REMAN PARTS**  
TOLL FREE: 1-877-928-1646  
32427 OLD HWY 34, TANGENT, OR 97389

Combine Parts  
Rebuild Kits  
Seats w/Air Suspension \$1,025  
Reman Engines for Case/IH, John Deere, and Ford  
JD 4010, 4020 Clutch Kits \$715

**SALVAGED TRACTORS**

**Farmland Tractor Supply**  
Parts@Farmlandtractor.com

**907 Nursery Equip. & Supplies**



**907 Nursery Equip. & Supplies**



**907 Nursery Equip. & Supplies**

**GK MACHINE INC Toilet Trailers**

Meets new OSHA field sanitation standards!

In-stock now!

- 24" stainless steel sink
- 43 gal. stainless freshwater tank
- RV style dump flush valve
- Igloo water cooler
- New door latch
- New optional no-touch sink faucet
- New optional hot water heater

**GK MACHINE, INC. 503-678-5525**  
www.GKToiletTrailers.com