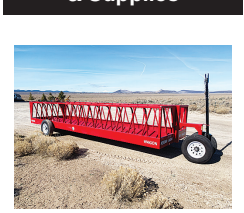


869 Livestock Equip. & Supplies



New IA 24' portable hay feeder with 8 hole wheels swing away tongue inner bunk with 35 outer station openings. Buy 2 or more For \$3,995 each. Bend, OR. 541-548-7185 mtcsales.net

Highway guard rail for cattle pens. Roseburg, OR. 541-944-3878

Livestock Panels: 16' (6) rail, (3) brace, \$117 each. 12' panels, (6) rail, (2) brace, \$88. Bow gates, all lengths and sizes. These panels are new Green color, hundreds available. **Heavy 16' Feeder Panels**, \$330 each. La Grande, OR. 541-805-9279, 541-963-6258



Calgary Stampede Manual Cattle Squeeze Chute: right hand controls with sternum bar, portable moving cart. Good condition, \$5000. Rock Island, WA. 509-630-2875



2012 Supreme 1200TTM Feed Truck. Allison transmission, 2 speed auxiliary. 836 Hours. One owner. Excellent Condition, \$210,000. Emmett, ID. Call or text Chris 541-810-8007; www.berrymachinery.com



Grain Bin: diameter 6ft; overall height 11ft+, \$1500 OBO. Aurora, OR. 503-803-0912

872 Dairy Eq. & Supplies

Germania Milking Parlor double 12, rapid exit, herringbone style, \$10,000 OBO. Cloverdale, OR. 503-812-6360

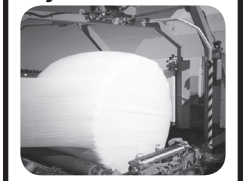
Polydome Calf Nursery: Hutches available for various climates. Western Polydome, Inc. Monroe, WA. 800-822-5837

BEST SELLERS... "...Sold everything in the herd but a couple of old bulls." Kester Ranch, Cottage Grove, OR Call 1-800-882-6789 and sell tool!



NEW MANURE SPREADER
400 bu. • BUY OR RENT
Call Scott at Barr-Tech
Complete/Organics Recycling
Authorized Dealer of PK RITE Spreaders
509-590-0437
www.Barr-Tech.net
Sprague, WA 5174525-1

SILAGE WRAP
Better forage for your livestock



541-369-2850
26890 Powerline Rd
Halsey, OR 97348
SMITH PACKAGING
smithpackagingservices.com
5191851-1

887 Irrigation Equip.

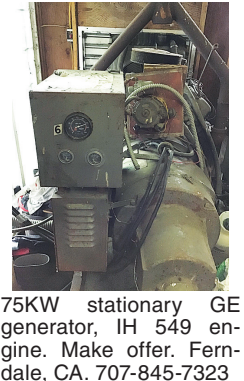
872 Dairy Eq. & Supplies

Complete Milking System: 4000 gallon Mueller tank, (3) 5HP 3 phase compressors, 10HP 3 phase rotary vane pump, 3in pipe line, receiver, transfer pump, pulsators. Germania model F machines. Spare 3 phase motor, \$25,000 for all. Will sell separately. Meridian, ID. 208-870-9979

875 Tanks & Storage

FUEL TANKS: Used single wall tanks 1500 & 2000 gallons. New 1000, 2000, 3000 and 4000, etc. gallon double walled tanks. Salem, OR. Peter 503-881-9803

878 Generators



75KW stationary GE generator, IH 549 engine. Make offer. Ferrdale, CA. 707-845-7323



Onan 60KW skid mount Propane Genset. 120-480 Volt. 1 and 3 phase. Generator has 1064 ACTUAL HOURS. Former Municipal Utility unit that has been inside since new. Unit is immaculate and works properly. \$8900. Located in Twin Falls Idaho. Call 208-613-0050.



GENERATORS: Used, low hour takeouts, 20kW to 2000kW, diesel, propane, & natural gas. Cooperstown, ND. We ship nationwide. 701-371-9526 or 701-367-4305 abrahamindustrial.com

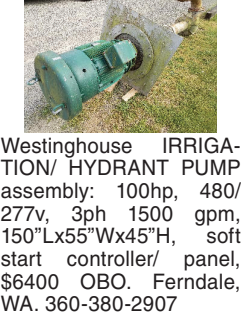
881 Shop Equip. & Tools

14" Mark 1 Band Saw: wood/ metal, mobile stand, good condition, \$50. La Center, WA. 360-690-5797, morselodge@gmail.com



NEVER USED, BRAND NEW ERCOLINA TUBE BENDER. TB60. BOUGHT FOR CLIENT WHOSE BUSINESS CLOSED. MAX TUBING 1/4" WALL X 2 1/2" DIAMETER, PIPE MAX 2" SCH40. COMES WITH FULL SET OF TUBING DIES; 3/4", 7/8", 1", 1 1/4", 1 1/2" AND 2". 230 3-PHASE \$16,000 OBO. JUNCTION CITY, OR. 541-554-1541

387 Irrigation Equip.
Westinghouse IRRIGATION/ HYDRANT PUMP assembly: 100hp, 480/ 277V, 3ph 1500 gpm, 150"Lx55"Wx45"H, soft start controller/ panel, \$6400 OBO. Ferrdale, WA. 360-380-2907



Bauer Rain Star Big gun sprinkler, 4" hose, piston driven, \$9000. Gaston, OR. 503-329-4365

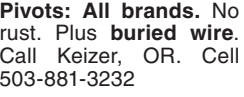
Your Leading Source for Irrigation Supplies
HPS Pipe & Supply
• Drip Irrigation • Filtration • Design
598 Baseline, Cornelius, OR 97113
Phone (503) 357-4217
www.hpspipe.com
info@hpspipe.com
Trade Ally of EnergyTrust of Oregon
5166577-1

887 Irrigation Equip.

2014 Micro Rain Irrigation Sprinkler. Low hours, great condition, \$8500. Castle Rock, WA. 360-749-4422

(57) Used Pivots: Engines, pumps. Garden Valley, ID. Call Mike at 208-420-1480, or see www.pivotsplus.com
100+ hook & latch 3" hand line; 1' risers & sprinklers. Volume discount option or per pipe price \$50. Forest Grove, OR. 503-799-2267

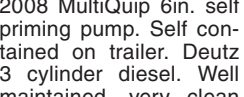
WANTED: Motor driven irrigation pump. Gas or Diesel. 800GPM, 100PSI. Please call! Phone was broken: 701-570-5600



IRRIGATION EQUIPMENT:
(14) Used 1/4 mile wheel lines, 5hp Gheen single frame field king 6', 5hp Gheen dual frame ranch king 5', 8hp Travis single frame 5', 4" & 5" pipe, \$6000 each. Various mover frames also available. Dixon, CA. 800-734-8859

WANTED: Water Winch Soft hose irrigation gun. Any condition; or Heinzman any condition. 541-761-0405, 541-660-4001

1000' used 10" Wosco mainline with valves, in good shape, **REDUCED TO \$5.25/ foot.** Prices negotiable. Hillsboro, OR. 503-260-5828



2008 MultiQuip 6in. self priming pump. Self contained on trailer. Deutz 3 cylinder diesel. Well maintained, very clean and operates like new, \$8900. Located in Twin Falls ID. Call 208-613-0050

WANTED: irrigation main line, 5", 6" and 8" supply hydrants. Wade rain and/ or Ringlock. Salem, OR. or surrounding area. 503-437-4833

Drip Tube: .26gph at 30" centers, 350 rolls. 500 rolls of drip tube 12" spaced emitters suitable for blueberries. \$75 per roll. Lafayette, OR. 503-437-4833

Used Valley 600 circle, 7 stands, 6-5/8" pipe, newer select control panel, new pipe on corner, 1000 8" system, 174" corner, 82" overhang, \$17,000. Near Pasco, WA. 509-380-7171

Cadman 3750XL hardnose sprinkler reel, \$16,500. Rickreall, OR. 503-838-3740, 503-383-6722



Allis Chalmers Forklift, propane powered, works well, \$1000. Junction City, OR. 503-877-8200

Thompson 8in. Towable Diesel Pump. Perfect for dewatering or irrigation use. Self priming. 6 Cylinder Deutz diesel. One owner former Municipal pump that has very low hours and is in like new condition. It's better than a new one. \$14,900. Located in Twin Falls ID. Call 208-613-0050

Champ Forklift for parts. Model 350-80. Good engine and hydraulic system, good rubber, 30ft lift, 8000 lb unit. Has transmission problem, \$1500. Turlock, CA. Gary 209-606-3094

CAT GPL-40 9000lb lift 4356 hours, 148 lift, side shift, pneumatic tires, propane 48" forks, \$8250. McMinnville, OR. Call/ Text 503-550-7625 www.SpringHollowEquip.com



Takeuchi TL 140 Skidsteer. 2900 Hours. Dealer Serviced. Asking \$24,500. Sandy, OR. Call Pepe: 503-544-3232; Call Pat: 503-407-9062

1996 EX200-5 Hitachi Excavator: thumb, excellent condition, all original, 7500 hours, \$29,000. Creswell, OR. 541-912-7807

887 Irrigation Equip.

(57) Used Pivots: Engines, pumps. Garden Valley, ID. Call Mike at 208-420-1480, or see www.pivotsplus.com

100+ hook & latch 3" hand line; 1' risers & sprinklers. Volume discount option or per pipe price \$50. Forest Grove, OR. 503-799-2267

WANTED: Motor driven irrigation pump. Gas or Diesel. 800GPM, 100PSI. Please call! Phone was broken: 701-570-5600



IRRIGATION EQUIPMENT:
(14) Used 1/4 mile wheel lines, 5hp Gheen single frame field king 6', 5hp Gheen dual frame ranch king 5', 8hp Travis single frame 5', 4" & 5" pipe, \$6000 each. Various mover frames also available. Dixon, CA. 800-734-8859

WANTED: 2" or 3" used irrigation pipe. Rickreall, OR. Call or text 503-551-4638

25HP Goulds 12 stage well pump, 350GPM, 120' of 6" column, \$7500. Brand New. Malin, OR. 541-892-2117

890 Packing/ Processing Eq.

Used Super Sacks. Used once. Stovepipe Top: \$3. Opened Top: \$5. Salem, OR. 503-932-8598

LOOK!

100 gallon, stainless steel, steam distiller. 220 volt. Like new. \$16,000. Halsey, OR. 541-760-9112

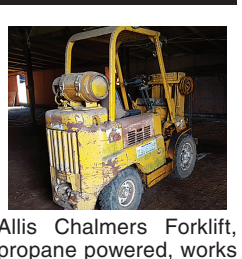
893 Logging Equip.

1996 EX200-5 Hitachi Excavator: thumb, excellent condition, all original, 7500 hours, \$29,000. Creswell, OR. 541-912-7807

894 Sawmill Equip.

WOODSHOP EQUIPMENT
Cantek 32" resaw, small vacuum dry kiln, Powermatic 5HP dust collector, 4-opening Italpresse, Diehl V581 Veneer splicer, John clipper.
Myrtle Point (541) 572-5755

896 Forklifts



Allis Chalmers Forklift, propane powered, works well, \$1000. Junction City, OR. 503-877-8200

Thompson 8in. Towable Diesel Pump. Perfect for dewatering or irrigation use. Self priming. 6 Cylinder Deutz diesel. One owner former Municipal pump that has very low hours and is in like new condition. It's better than a new one. \$14,900. Located in Twin Falls ID. Call 208-613-0050

Champ Forklift for parts. Model 350-80. Good engine and hydraulic system, good rubber, 30ft lift, 8000 lb unit. Has transmission problem, \$1500. Turlock, CA. Gary 209-606-3094

CAT GPL-40 9000lb lift 4356 hours, 148 lift, side shift, pneumatic tires, propane 48" forks, \$8250. McMinnville, OR. Call/ Text 503-550-7625 www.SpringHollowEquip.com



Takeuchi TL 140 Skidsteer. 2900 Hours. Dealer Serviced. Asking \$24,500. Sandy, OR. Call Pepe: 503-544-3232; Call Pat: 503-407-9062

1996 EX200-5 Hitachi Excavator: thumb, excellent condition, all original, 7500 hours, \$29,000. Creswell, OR. 541-912-7807

899 Heavy & Indust. Eq.



Hitachi ZX 135: 2 buckets, hydraulic pin, grabber thumb, blade, A/C, grade beam, 4600 hours \$54,500. Sandy, OR. Call Pepe: 503-544-3232; Call Pat: 503-407-9062



D-6 H U-dozer with tilt and ripper, near new engine and hydraulic pump, \$79,500. Salem, OR. 503-362-3055

CEC Screenit: 5x12 screen, \$50,000. Pilot Rock, OR. 541-969-8645

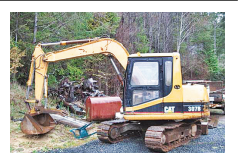
Komatsu Excavator: 98PC200-6, thumb, Quick Coupler, forestry guarding, 1100 hours, \$55,000. Creswell, OR. 541-912-7807



CAT D8: Cable Control, 1960s era, pony motor. Great workhorse, \$6000. Junction City, OR. 503-877-8200



2013 Bobcat T550; 1990 hours, new tracks, \$28,000. Gaston, OR. 503-789-3726



1997 CAT 307B Excavator, 2 Buckets, thumb, blade, Asking \$24,950. Sandy, OR. Call Pepe: 503-544-3232; Call Pat: 503-407-9062



(2) 2014 Case TV380 Skidsteers, GP Bucket, Asking \$24,950.00 each. Sandy, OR. Call Pepe: 503-544-3232; Call Pat: 503-407-9062



2006 Takeuchi TB125, 6150 Hours, (2) 1', 18", 30" buckets, Good Rubber, \$10,000. Salem, OR. Call Bill Martinak 503-931-5261



2005 Takeuchi TB135, 4826HRS, Newer Motor, 18", 24", 36" bucket, Good Rubber. \$8,000. Salem, OR. Call Bill Martinak 503-931-5261



CAT 305 Mini Excavator, Dig and Clean up Bucket, Thumb, Blade, Steel Track with Pads. Asking \$22,500. Sandy, OR. Call Pepe: 503-544-3232; Call Pat: 503-407-9062



Case 850B Dozer, Six Way Blade, Asking \$13,500. Sandy, OR. Call Pepe: 503-544-3232; Call Pat: 503-407-9062

899 Heavy & Indust. Eq.

REPLACEMENT DECAL SETS
Construction, Forestry & Ag Equipment. Fast, Knowledgeable, Reliable Service. 215-536-5339 email: info@CustomServicesCompany.com
Thousands of sets, Old & New, in our digital inventory. www.QuipCal.com



2017 Deere 544K-II 1680 hours, quick attach bucket, real nice low hour machine. Ready to work. \$135,000. Cove, OR. 541-910-8024



CAT 623-B: Self-loading scraper, good condition, Reduced \$29,500. Salem, OR. 503-362-3055

CASE INDUSTRIAL PARTS
We sell genuine, after market, and used CASE parts at discount prices nationwide. Call For Free Catalog.

CENTRAL EQUIPMENT
AFTER MARKET & USED PARTS
Medford, OR
(888) 593-8749

Quality Used EQUIPMENT & ATTACHMENTS
• INDUSTRIAL
• COMMERCIAL
Please visit our Website www.amtractor.com for a complete list of Machines and Attachments

American Tractor

Our Toll Free # **888-499-8980**
Call Cameron Noble or Eric Hunt
CENTRAL POINT, OR

902 Farm Equip. Parts

902 Farm Equip. Parts

Nyssa Tractor & Implement
Our yard has 5 miles of road, the rest is farm machinery & parts.
www.nyssatractor.com
Toll Free (833) 372-4020
Nyssa, OR

ASSOCIATED TRACTOR SERVICE INC.
NEW • USED • REBUILT PARTS PARTS • SERVICE • EQUIPMENT
PARTS ★ SERVICE ★ EQUIPMENT
• Used Parts
National Locator Services
• BEGE Hydraulic Pumps & Parts
Satisfaction Guaranteed Since 1954
800-735-1301 • 209-466-3003
1323 W. Charter Way, Stockton, CA 95206-1110

BIG TRACTOR PARTS, INC.
~ GEARED FOR THE FUTURE ~
STEIGER TRACTOR SPECIALIST
• 1. We are your source for new & used Steiger drivetrain parts Series 1-9300 Series.
• 2. We rebuild Spicer manual transmissions, Fugl power shift transmissions, dropboxes & axle with ONE YEAR WARRANTY!
• 3. We now rebuild computer control boxes for Steiger tractors 1982-1999.
800-982-1769
www.bigtractorparts.com

LIST YOUR CLASSIFIEDS TODAY.
1-800-882-6789
FAX 503-364-2692 • CapitalPress.com

899 Heavy & Indust. Eq.

899 Heavy & Indust. Eq.

BigIRON HEAVY EQUIPMENT and AG REPAIRS
Complete Mobile Repair Services
- PORTABLE LINE BORING -
Scott & Eddy Carroll • 509-770-5560
BigIronRepair@odessaoffice.com

RIVERBROOK FARM • HAULING SERVICE
Brooks, OR
WE HAUL!
• Building Supplies • Farm Equipment
• Construction Equipment • Heavy Equipment
• Granular Fertilizer • Grain/Wheat
888-393-1819 • www.riverbrooktrucking.com

R & G MACHINING AND ENGINE PARTS
COMPLETE DIESEL MACHINE SHOP AND TRUCK REPAIR
MULINO, OREGON • SHOP: 503-829-6038 • NATIONWIDE: 1-800-823-6038
We Absolutely, Positively Have The Best Remanufactured Engines Available Anywhere!
Huge Inventory • Expert Technical Assistance

ENGINES BY R&G MACHINING		REBUILT DIESEL L/B ENGINES	
FORD	CHRYSLER & JEEP	CUMMINS	MITSUBISHI & NISSAN
300.....\$1,595	4.0-4.2.....\$1,895	3.9-4BT.....\$3,395	Starting at.....\$5,995
4.6-5.4.....\$2,895	318-360.....\$1,899	5.9 '88-'02.....\$3,695	YANMAR & KUBOTA
302-351-400.....\$1,895	440.....\$2,899	5.9 '03 & up.....\$3,895	Starting at.....\$4,495
360-390.....\$1,995	488 V10.....\$3,395	6.7 C/R.....\$4,195	BOBCAT & PEUGEOT
415-V10.....\$3,295	22RE.....\$1,395	6.0 P/S.....\$4,595	Starting at.....\$3,995
429.....\$2,499		6.4 P/S.....\$5,295	DOOSAN & TAKEUCHI
460 '72-'92.....\$1,899		7.3 P/S.....\$6,395	Starting at.....\$5,995
		7.3 P/S.....\$3,895	CASE, IH, & JCB
		6.2-6.5.....\$3,699	Starting at.....\$3,995
		JOHN DEERE	Starting at.....\$5,995
		KOBELCO, KOMATSU, HITACHI	Starting at.....\$5,995
		PERKINS & ISUZU	Starting at.....\$5,995
			Starting at.....\$5,995

Call on other gas or diesel engines. We are a major rebuilder on all diesel brands. All work done in house!
IN BUSINESS SINCE 1975.

OVER 250 ENGINES & 450 CYLINDER HEADS IN STOCK!
We have a complete line of import diesels and obsolete diesels for your mini excavators or skidsteers. We work and repair all brands!

Need Engine Parts, Gas or Diesel - Check it out:
www.ebay.com/str/grumpysperformancecenter

ERNST IRRIGATION
GOT TRAVELERS?
NEW TRAVELERS:
• 4" ID X 1400ft w/ID4045 engine and Cornell 3RB pump
• 4" ID X 1400ft w/8hp Honda Engine Drive
• 3.7" ID X 700ft w/5.5hp Honda Engine Drive
• 3" ID X 1100ft w/5.5hp Honda Engine Drive
Ask About USED MACHINES in Stock
www.ErnstIrrigation.com • (503) 633-1111
20179 Main St., St. Paul, OR 97137 • Mon-Fri 8am-5pm; Sat 8am-2pm

EARTH MOVING EQUIPMENT FOR RENT
• CAT 623 SCRAPERS
• CAT 815 ROLLER
• CAT ROAD GRADER
• 3.5 YD. LOADER
Rent by the week or month. Great rates, scheduling now!
Call Rob Weathers
503-931-0512