

887 Irrigation Equip.

Pivots: All brands. No rust. Plus buried wire. Call Keizer, OR. Cell 503-881-3232

Drip Tube: .26gph at 30" centers, 350 rolls. 500 rolls of drip tube 12" spaced emitters suitable for blueberries. \$75 per roll. Lafayette, OR. 503-437-4833

Used Valley 600 circle, 7 stands, 6-5/8" pipe, newer select control panel, new pipe on corner, 1000 8' system, 174' corner, 82' overhang, \$17,000. Near Pasco, WA. 509-380-7171

Cadman 3750XL hard-nose sprinkler reel, \$16,500. Rickreall, OR. 503-838-3740, 503-383-6722



Bauer Rain Star Big gun sprinkler, 4" hose, piston driven, \$9000. Gaston, OR. 503-329-4365

(57) Used Pivots: Engines, pumps. Garden Valley, ID. Call Mike at 208-420-1480, or see www.pivotsplus.com

100+ hook & latch 3" hand line; 1' risers & sprinklers. Volume discount option or per pipe price \$50. Forest Grove, OR. 503-799-2267

WANTED: Motor driven irrigation pump. Gas or Diesel. 800GPM, 100PSI. Please call! Phone was broken: 701-570-5600



IRRIGATION EQUIPMENT:

(14) Used 1/4 mile wheel lines, 5hp Gheen single frame field king 6", 5hp Gheen dual frame ranch king 5", 8hp Travis single frame 5", 4" & 5" pipe, \$6000 each. Various mover frames also available. Dixon, CA. 800-734-8859

H₂O Pipe & Supply
Specializing in
• Drip Irrigation
• Filtration • Design
598 Baseline, Cornelius, OR
(503) 357-4217
www.hpspipe.com
CCB#120254

High Quality Brass Vyrsa Impact Sprinklers
1/2" Part Circle \$15.60
1/2" Full Circle \$11.70
3/4" Part Circle \$25.74
3/4" Full Circle \$14.88
Call For Bulk Pricing and FREE Brochure!
WaterTec
(360) 393-4923
www.watertecna.com
Lynden, WA

890 Packing/Processing Eq.

LOOK!

100 gallon, stainless steel, steam distiller. 220 volt. Like new. \$21,000. Halsey, OR. 541-760-9112

Used Super Sacks. Used once. Stovepipe Top: \$3. Opened Top: \$5. Salem, OR. 503-932-8598

899 Heavy & Indust. Eq.

R & G MACHINING AND ENGINE PARTS
COMPLETE DIESEL MACHINE SHOP AND TRUCK REPAIR
MULINO, OREGON • SHOP: 503-829-6038 • NATIONWIDE: 1-800-823-6038
We Absolutely, Positively Have The Best Remanufactured Engines Available Anywhere!
Huge Inventory • Expert Technical Assistance

ENGINES BY R&G MACHINING	
FORD	CHRYSLER & JEEP
300.....\$1,595	4.0-4.2.....\$1,895
4.6-5.4.....\$2,895	318-360.....\$1,899
302-351-400.....\$1,895	440.....\$2,899
360-390.....\$1,995	488 V10.....\$3,395
415-V10.....\$3,295	429.....\$2,499
460 72-92.....\$1,899	22RE.....\$1,395
GM	
4.3 V6 '85-'91.....\$1,595	NEW HOLLAND DIESEL OR GAS ENGINES (Starting at.....\$2,899 Exch.)
350 '69-'88.....\$1,595	
350 '89-'02.....\$1,899	
454 '75-'87.....\$1,895	

Call on other gas or diesel engines. We are a major rebuilder on all diesel brands. All work done in house!
IN BUSINESS SINCE 1975.

OVER 250 ENGINES & 1475 CYLINDER HEADS IN STOCK!
We have a complete line of import diesels and obsolete diesels for your mini excavators or skidsteers. We work and repair all brands!

Need Engine Parts, Gas or Diesel - Check it out:
www.ebay.com/str/grumpysperformancecenter

893 Logging Equip.



Lightly Used Farni 351P Forest Logging winch, also extras, \$3500 firm. Paisley, OR. 541-219-2557

1996 EX200-5 Hitachi Excavator: thumb, excellent condition, all original, 7500 hours, \$29,000. Creswell, OR. 541-912-7807

894 Sawmill Equip.

WOODSHOP EQUIPMENT
Cantek 32" resaw, small vacuum dry kiln, Powermatic 5HP dust collector, 4-opening Italpresse, Diehl V581 Veneer splitter, John Dipper.
Myrtle Spicer (541)572-5755
51909333-1

896 Forklifts



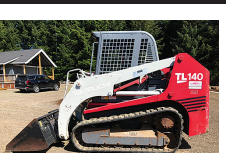
Allis Chalmers Forklift, propane powered, works well, \$1000. Junction City, OR. 503-877-8200

Champ Forklift for parts. Model 350-80. Good engine and hydraulic system, good rubber, 30ft lift, 8000 lb unit. Has transmission problem, \$1500. Turlock, CA. Gary 209-606-3094

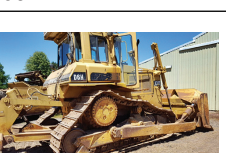


CAT GPL-40 9000lb lift 4356 hours, 148 lift, side shift, pneumatic tires, propane 48" forks, \$8950. McMinnville, OR. Call/Text 503-550-7625 www.SpringHollowEquip.com

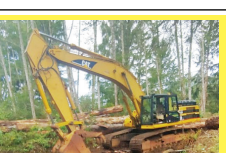
899 Heavy & Indust. Eq.



Takeuchi TL 140 Skid-steer. 2900 Hours. Dealer Serviced. Asking \$24,500. Sandy, OR. Call Pepe: 503-544-3232; Call Pat: 503-407-9062



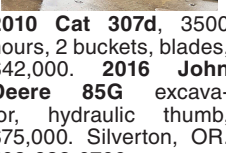
D-6 H U-dozer with tilt and ripper, near new engine and hydraulic pump, \$79,500. Salem, OR. 503-362-3055



CAT Excavator 345B: 5' bucket and muck bucket, thumb, 36" tracks, 13,700 hours, Ready to work, \$39,000. Seaside, OR. 503-440-4925



2010 Cat 307d, 3500 hours, 2 buckets, blades, \$42,000. **2016 John Deere 85G** excavator, hydraulic thumb, \$75,000. Silverton, OR. 503-932-0766



2005 Takeuchi TB135, 4826HRS, Newer Motor, 18", 24", 36" bucket, Good Rubber. \$8,000. Salem, OR. Call Bill Martinak 503-931-5261

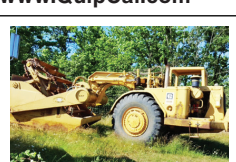
REBUILT DIESEL L/B ENGINES	
CUMMINS	MITSUBISHI & NISSAN
3.9-4BT.....\$3,395	Starting at.....\$5,995
5.9 '88-'02.....\$3,895	YANMAR & KUBOTA
5.9 '03 & up.....\$3,895	Starting at.....\$4,495
6.7 C/R.....\$4,195	BOBCAT & PEUGEOT
6.0 P/S.....\$4,595	
6.4 P/S.....\$5,295	
6.7 P/S.....\$6,395	
7.3 P/S.....\$3,895	
DOOSAN & TAKEUCHI	
Starting at.....\$5,995	
GM	
6.2-6.5.....\$3,699	
CASE & IH	
Starting at.....\$3,995	
JOHN DEERE	
Starting at.....\$5,995	
HINO & IVECO	
Starting at.....\$5,995	
KOBELCO, KOMATSU, HITACHI	
Starting at.....\$5,995	
PERKINS & ISUZU	
Starting at.....\$5,995	

We have a complete line of Exchange - Rebuilt or New - engine blocks - crankshafts - connecting rods - camshafts & lifters - cylinder heads (bare or loaded) - oil coolers - intake and exhaust manifolds - turbos & injectors

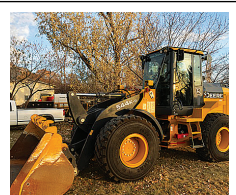
899 Heavy & Indust. Eq.

1996 EX200-5 Hitachi Excavator: thumb, excellent condition, all original, 7500 hours, \$29,000. Creswell, OR. 541-912-7807

REPLACEMENT DECAL SETS
Construction, Forestry & Ag Equipment. Fast, Knowledgeable, Reliable Service. 215-536-5339 email: info@CustomServicesCompany.com
Thousands of sets, Old & New, in our digital inventory.
www.QuipCal.com



CAT 623-B: Self-loading scraper, good condition, Reduced \$29,500. Salem, OR. 503-362-3055



2017 Deere 544K-II 1680 hours, quick attach bucket, real nice low hour machine. Ready to work. \$139,000. Cove, OR. 541-910-8024

CEC Screenshot: 5x12 screen, \$50,000. Pilot Rock, OR. 541-969-8645

Komatsu Excavator: 98PC200-6, thumb, Quick Coupler, forestry guarding, 1100 hours, \$55,000. Creswell, OR. 541-912-7807



CAT D8: Cable Control, 1960s era, pony motor. Great workhorse, \$7000. Junction City, OR. 503-877-8200



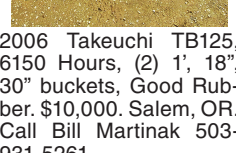
1997 CAT 307B Excavator, 2 Buckets, thumb, blade, Asking \$24,950. Sandy, OR. Call Pepe: 503-544-3232; Call Pat: 503-407-9062



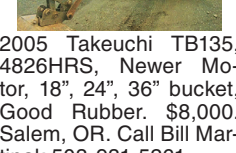
(2) 2014 Case TV380 Skidsteers, GP Bucket, Asking \$24,950.00 each. Sandy, OR. Call Pepe: 503-544-3232; Call Pat: 503-407-9062



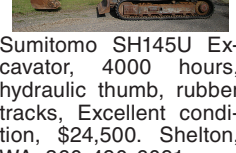
2006 Takeuchi TB125, 6150 Hours, (2) 1', 18", 30" buckets, Good Rubber. \$10,000. Salem, OR. Call Bill Martinak 503-931-5261



2005 Takeuchi TB135, 4826HRS, Newer Motor, 18", 24", 36" bucket, Good Rubber. \$8,000. Salem, OR. Call Bill Martinak 503-931-5261



Sumitomo SH145U Excavator, 4000 hours, hydraulic thumb, rubber tracks, Excellent condition, \$24,500. Shelton, WA. 360-490-6091



899 Heavy & Indust. Eq.



2013 Bobcat T550; 1990 hours, new tracks, \$28,000. Gaston, OR. 503-789-3726



CAT 305 Mini Excavator, Dig and Clean up Bucket, Thumb, Blade, Steel Track with Pads. Asking \$22,500. Sandy, OR. Call Pepe: 503-544-3232; Call Pat: 503-407-9062



Case 850B Dozer, Six Way Blade, Asking \$13,500. Sandy, OR. Call Pepe: 503-544-3232; Call Pat: 503-407-9062



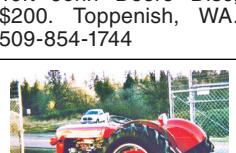
Brush rake fits D-6 size Cat, shop built never used, \$500. Scappoose, OR. 503-804-2652

CASE INDUSTRIAL PARTS
We sell genuine, after market, and used CASE parts at discount prices nationwide.
Call For Free Catalog.
CENTRAL EQUIPMENT
AFTER MARKET & USED PARTS, Medford, OR
(888) 593-8749

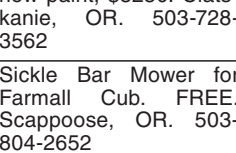


905 Antique Farm Eq. & Parts

Farmall 450 Excellent condition. Recent paint, \$2500. (2) Farmall H Tractors. Poor condition. One Farmall 300, poor condition. One Oliver 8355, runs. Make offer. 10ft John Deere Disc, \$200. Toppensish, WA. 509-854-1744



Restored 1959 Massey Ferguson. Total Restoration done. 4 new tires, new paint, \$5250. Clatskanie, OR. 503-728-3562



Sickle Bar Mower for Farmall Cub. FREE. Scappoose, OR. 503-804-2652



2018 JCB 530-70 Telehandler. 178 hours. 26" reach. Bucket and forks, \$90,000. Mesa, WA. 509-539-4641

902 Farm Equip. Parts

Nyssa Tractor & Implement

Our yard has 5 miles of road, the rest is farm machinery & parts.
www.nyssatractor.com
Toll Free (833) 372-4020
Nyssa, OR

BIG TRACTOR PARTS, INC.
~ GEARED FOR THE FUTURE ~

STEIGER TRACTOR SPECIALIST

- 1. We are your source for new & used Steiger drivetrain parts Series 1-9300 Series.
- 2. We rebuild Spicer manual transmissions, Fuji power shift transmissions, dropboxes & axle with ONE YEAR WARRANTY!
- 3. We now rebuild computer control boxes for Steiger tractors 1982-1999.

800-982-1769
www.bigtractorparts.com

NEW, USED, AND REMAN PARTS
TOLL FREE: 1-877-928-1646
32427 OLD HWY 34, TANGENT, OR 97389

Combine Parts
Rebuild Kits
Seats w/Air Suspension \$1,025
Reman Engines for Case/IH, John Deere, and Ford
JD 4010, 4020 Clutch Kits \$715
SALVAGED TRACTORS
Farmland Tractor Supply
Parts@Farmlandtractor.com

907 Nursery Equip. & Supplies

FRESH SAWDUST: Consistently fair pricing. 9 Unit Loads Now Available Forest-Grove, OR. For pricing call 503-849-0216

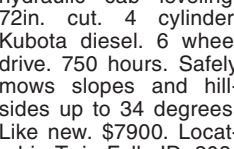
Grow Bags: 30 gallon/ \$2 each. 65 gallon/ \$4 each. 200 gallon/ \$8 each. Used one season. Good shape. Large Quantity Discount. Eagle Point, OR. 541-821-3260

USED NURSERY CONTAINERS: Used, but reusable nursery containers. All sizes. Inventory changes daily. Call for current availability and prices. Sawyer Farms, Scio OR. 503-769-3417, juddsfarm@wvi.com (also wanted: used containers)

908 Garden, Turf, Yard Equip.



Hustler 6400 Hillside Slope Mower. Automatic hydraulic cab leveling. 72in. cut. 4 cylinder. Kubota diesel. 6 wheel drive. 750 hours. Safely mows slopes and hill-sides up to 34 degrees. Like new. \$7900. Located in Twin Falls ID. 208-613-0050



911 Hay Equip.

2019 Roadrunner Hay Squeezer: Like new, excellent condition. 3 stage mast, \$189,500. Rickreall, OR. 503-930-1904



Allen 8827 rake, \$8000. Case 8830 swather, \$11,000. New Holland S1048 bale wagon, \$9000. Goldendale, WA. 509-773-3925

Must Sell: 180H Hyster Hay Squeeze, \$10,000. **John Deere 5830 Chopper.** Forest Harvester, \$30,000. **New Holland 1440 Mower Conditioner,** \$10,000. Cloverdale, OR. 503-812-6360

Twinstar V Rake 2024 Excellent condition, low hours, \$18,000. Castle Rock, WA. 360-274-4422

International Mower Conditioner, 9ft cut for parts, \$150. Yamhill, OR. 503-662-3701, 503-437-5048

New Holland 1431 Disc Mower, 2005/ 2006, \$8000. Turner, OR. 503-932-7130



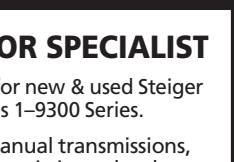
Highline Bale Feeder 2015 CFR650, OWNER OPERATED, WELL MAINTAINED. \$10,500. Lakeview, OR. 541-219-2698

RETIRING:

HAY RAKES:
(2) Twinstar G2- \$22,000.
(3) Twinstar 2030- Rakes double frame, \$13,000.
(3) Harrell 8827: 12' Twinstar baskets, \$10,000.
12' Baskets, new teeth, extended frame, \$4,000.
10.5' Twinstar baskets, extended frame, \$4,000.

JOHN DEERE WINDROWER SWATHERS:
R450- 500R head, 1455 tractor hours, 1093 header hours, \$85,000.
4990- 995 16ft head with all Hay tools conversions equal to 500R head, 6411 tractor hours, low hour header, \$28,000.
4990- 995 16ft head with all Hay tools conversions equal to 500R head, 4332 tractor hours, low hour header, \$32,000.

BIG BALERS:
(4) KRONE 1290 Big Packs- Serial #KBP12773090, 56000 bales, \$25,000. HDP HS- Serial #BP2Z933934, 9000 bales, \$95,000. HDP HS- Serial #KBP12885108, 25054 bales, \$60,000. HDP HS- Serial #KBP12874921, 27284 bales, \$50,000. Connell, WA. Call/ text 509-282-2355



"New" Mil-Stak PT 2150 Bale Stacker. Stacks (8) 4x4 bales, (12) 3x4 bales, (18) 3x3 bales, \$99,500. Fruitland, ID. Call/ text Chris 541-810-8007



2013 New Holland 340 Big Baler- 10,000 bales, moisture meter, bale chute extension, bale chute ski's, scales, camera on back and folding bale chute, ready to go. One Owner. Excellent Condition, \$65,000. Southeastern, OR. 541-219-0741



Swather- One owner, 2011 New Holland H8080 swather, with 416, 16' disc- bine header, deluxe cab, electric mirrors, 1900 +/- hours, \$69,500. Southeastern, OR. 541-219-0741



1987 Littau Berry Harvester SP87-06. Side row, 32" tunnel, rotary. Excellent condition. Well maintained, \$25,000. Silverton, OR. 503-362-3080

911 Hay Equip.

Massey Ferguson 1839 Center Line Baler, \$18,000. John Deere 338 Baler, \$5000. Ferrdale, WA. 360-366-3611

New And Used Parts for all models New Holland bale wagons. **Largest Inventory in North America.** Sod Busters Sales, Polson, MT. 877-735-2108 or 406-883-2118

2 Krone 1290 balers, 3x4, \$50,000. New Holland BW28, Mil-stak and 3 tie attachments, \$110,000. Silver Lake, OR. 541-480-3371



HAY EQUIPMENT. Like new, few hours, always garaged. Must see to appreciate: **NEW HOLLAND COMMERCIAL BALER 570** **NEW HOLLAND DISC MOWER 615** **KUHN TEDDER/ RAKE GYRO 24** **JOHN DEERE RAKE 613** \$24,000 OBO for all. Camas, WA. 360-834-5841

Mower conditioner, Kuhn 350 Gyro, 12' cut. Can deliver, \$4500 OBO. Enumclaw, WA. 360-825-6548

Baler, New Holland 575, shedded, hydraulic tensioner, 1/4 turn chute, \$7500 OBO. Enumclaw, WA. 360-825-6548

Allen 8827 rake, \$8000. Case 8830 swather, \$11,000. New Holland S1048 bale wagon, \$9000. Goldendale, WA. 509-773-3925

Must Sell: 180H Hyster Hay Squeeze, \$10,000. **John Deere 5830 Chopper.** Forest Harvester, \$30,000. **New Holland 1440 Mower Conditioner,** \$10,000. Cloverdale, OR. 503-812-6360

Twinstar V Rake 2024 Excellent condition, low hours, \$18