

923 Farm Equipment

**RETIRING:**  
ACE Groundhog - 14' width, \$5,000. John Deere VT2623 vertical tillage soil management system- 26' width, very low acres, \$38,000. Sterling Packer- 28' width, 18ft center section, usable without wings, low acres, \$10,000. Connell, WA. Call/ text 509-282-2355



1996 Willmar 765 Sprayer. Good condition, low hours, \$38,500. Aurora, OR. 503-754-3679



New Ag Spray 110 gallon Tractor Sprayer. Hydraulically driven spray pump. Spray boom with nozzles. Hose reel and spray gun. All manuals; many spare parts, \$3900 OBO. Packed on pallet. We'll load for pickup in Olympia, WA. 360-239-3126



JOHN DEERE 980 S-tine field cultivator. 22', walking beam axles, rear hitch with hydraulics, and leveling harrow with rolling baskets, \$14,500 Brooks, or 503-580-4261

**Jay's EQUIPMENT SEAT COVERS**  
PROTECT YOUR SEAT!  
Equipment Seat Covers Fits: Tractors, Forklifts, Loaders, Backhoes, Skid Steers, Excavators, Semi Trucks, More. 541-401-5933 EquipmentSeatCovers.com



John Deere 12ft drill. Needs some work, \$1200 OBO. Valley, WA. 509-868-7013



Portable Toilet Trailers GGAP Compliant Single or Double Trailers Starting at \$2050! B&L Fabrication, LLC 503-932-3498 www.bnlfab.com Salem, OR.

**RELOCATING- Huge CLEARANCE Sale:** John Deere 1209 mower conditioner, \$2450. John Deere 1207 mower conditioner \$1950. 6 disk Lely mower, \$1950. Brush hog rotary mower, \$2250. Plows (all sizes), several off-set discs 15'-28', disc mowers, grain drills, blades, manure spreaders, tandem axle manure spreader, rototillers, combine weed headers, etc. Lots of hay equipment. Everything Farm Related! EVERYTHING MUST GO! Rickreall, OR. 503-838-3740, 503-383-6722



Mid Sized Sprayer: 300 gallon, 60' booms, 4x4 flotation tires with duals for rear and 9.5-42 narrow tires. All tires like new. Chevrolet 350 Vortec geared down to 24 speeds forward and 6 reverse. Ag Leader GPS, auto boom monitor, \$21,000. Banks, OR. 503-807-4604

RETIRED: John Deere 4890 swather, 1770 hours, excellent condition, \$25,000. Banks, OR. 503-313-8079

**DISTILLERY EQUIPMENT:** Excellent condition. •LIKE NEW- 2006 500 HP Cleaver Brooks boiler, model CB1-200-500-150, gas/ oil fired, emission controls, shedded. You load and haul, \$150,000 OBO. •1964 250 HP Pawnee (Superior) gas/ oil fired boiler, \$10,000. •(5) NEW 2015 New House pyramid separators, automated. •Several New House separators and condensers •2012 Parma 15 HP lift pump. •2 New House re-distills. •Toledo Scale. •Miscellaneous distillery equipment: aluminum piping, hookups, etc. Othello, WA. 509-989-6070

923 Farm Equipment



NEW IA Pasture Aerators: Bolt on teeth. Heavy Duty Frame. 8ft \$4995; 10ft \$6995; 12ft, \$7,995 includes cement blocks. Bend, OR. 541-548-7185 mtcsales.net

923 Farm Equipment



NEW IA Hydraulic Box Scrapers with hydraulic tilt. LD 10ft, \$2550; LD 12ft, \$2750. HD 10ft, \$3695; HD 12ft, \$3995. Bend, OR. 541-548-7185 mtcsales.net

923 Farm Equipment



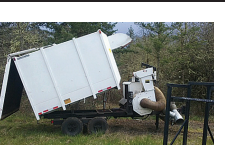
NEW IA Tandem and Offset Wheel Discs. 9ft: \$4995. 11ft: \$5595. 12ft: \$5795. 13ft: 5995. Bend, OR. 541-548-7185 mtcsales.net

923 Farm Equipment



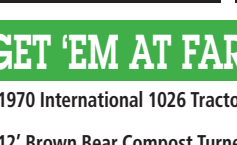
NEW IA Pivot Track Closer. Heavy Duty with adjustable cone discs. From 60" to 12" width. Hydraulic Depth Control Roller, \$3595. Bend, OR. 541-548-7185 mtcsales.net

923 Farm Equipment



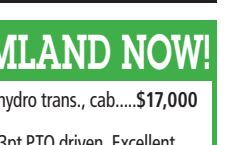
2 axle leaf vac; John Deere 74HP diesel, 2002, \$12,000. Gaston, OR. 503-789-3726

923 Farm Equipment



CASE Bean Planter Model 1210: rigid frame, 12 row. Chains, sprockets, gears and metering wheels like new. Very little use. CASE Early Riser Monitor III. All wiring included. Boxes of new extra parts. Full set of front coulters for no-till seeding. Field ready. Like new condition at 1/2 the price of new, \$30,000 OBO. Moses Lake, WA. 509-750-7598

923 Farm Equipment



1970 International 1026 Tractor, hydro trans., cab....\$17,000  
12' Brown Bear Compost Turner, 3pt PTO driven. Excellent condition .....\$15,000 \$12,000  
JD 540 Loader.....\$6,500  
JD 145 Loader.....\$3,500

**Farmland Tractor Supply**  
Tangent, Oregon  
**877-928-1646**  
541-928-1646  
32427 Old Hwy. 34  
Tangent, OR 97389

**CUSTOM SEED CLEANING**



**Room Available!**

- Grass Seed
- Clover Seed
- Bent Grass



**KLOPFENSTEIN AG SERVICE**  
**503-932-0766**

**TJEQUIPMENT LLC**  
(360) 815-1597 Lynden, WA

NEW 2019 Vermeer TE330 .....\$32,505	NEW 2020 McHale Fusion 3.....\$107,600	2016 Cadman 4000 XLWB.....\$33,000
Claas Liner 880 PROFIL.....\$16,000	NEW 2019 McHale V660 .....\$55,900	Evergreen Water Master.....\$18,500
NEW Vermeer R2800 2 basket rake, 19'-28' raking width.....\$32,830	2010 New Holland BC5070 moisture sensor, hyd. tension.....\$21,500	Evergreen Water Master 4"x1320" hose, hyd. stabilizers. \$24,500
2018 Frontier WR5417 16'-27' raking width, like new.....\$24,000	1995 John Deere 338 14" x 18" bales.....\$8,000	Evergreen Water Master 4.5"x1320" hose, hyd. stabilizers...\$19,500
1997 Claas Liner 780 2 basket, up to 24' raking width.....\$9,200	1994 New Holland 570 540 PTO, stored inside.....\$7,300	Bauer 85STX turbine driven with computer.....\$11,500
New Holland 169 6 basket tedder, 540 PTO.. \$5,500	NEW McHale R5 round bale handler.....Starting at \$2,450	Carraro 90/300 Honda driven, hyd. stabilizers.....\$8,500

Find lots more equipment at:  
[www.TJEquipmentLLC.com](http://www.TJEquipmentLLC.com)

**Western STORAGE TRAILERS**  
1-800-OK-2-RENT  
Rent or Sale Containers and Trailers

**CONTAINERS: 20' & 40'**  
**TRAILERS: 27', 40', 45' & 48'**  
**Western Mobile Storage**  
1-800-652-7368 • 541-342-1835  
Eugene, OR

**Containers For Sale**  
20' and 40'  
REFRIGERATED CONTAINERS AVAILABLE



**Portland Container**  
9449 N. Burgard Way, Portland OR  
Call Alan Conner (503) 286-1767  
or 1-800-788-5159  
boxsales@pdxcontainer.com  
(Credit Cards Accepted)

**NORTON'S WELDING**  
866-628-2497  
541-569-2436 • 541-398-2900  
Lostine, OR • [www.nortonwelding.com](http://www.nortonwelding.com)

<b>TRACTORS</b>	Agri-Ease 6' Box Scraper with rippers .....\$775.00
International 1456 Tractor, cab, no loader.....\$12,000	Land Plane Scraper.....\$500
Ford 5000 Tractor, no loader, 2wd...\$8,500	General 7' 3pt. Back Blade .....\$650
<b>HAY EQUIPMENT</b>	B&E 7 Ft USS Snow Blade w/out hyd. kit.....\$1,650
USS 39" 2 Spear Bale Fork.....\$575	B&E 7 Ft USS Snow Blade w/hyd. angle kit.....\$1,900
USS 49" 2 Spear Bale Fork.....\$595	General 72" USS Snow Blade w/out hyd. kit.....\$2,100
John Deere Ground Driven Hay Rake .....\$850	General 60" USS Snow Blade w/out hyd. kit.....\$1,995
Agri-Ease 330 DR Rotary Hay Rake .....\$4,895	General Hyd. Kit for snow blades.....\$295
New Holland 258 hyd. Roll Bar Hay Rake .....\$4,000	Norstar Long Box Flatbeds.....\$2,295
Hesston 6650 Self-propelled Swather.....\$7,500	J&I Dually Flatbeds, New.....\$2,100
John Deere Hydro Swing Swather, bad pump, no conditioner.....\$1,000	Used RTC 70 Rototiller.....\$1,995
<b>FARM EQUIPMENT</b>	5 Ft Rotary Mowers.....\$1,195
Harrow Draw Bar 4-12 Foot.....CALL	6 Ft Rotary Mowers.....\$1,399
John Deere Model 225, 7' offset disc on rubber.....\$9,500	4 Ft Rotary Mower.....\$1,250
3Pt 4x6 Ft 5/8" Harrow with carrier.....\$550	7 Ft Rotary Mower.....\$2,875
Various Sizes 1/2" Harrow.....CALL	Quick Mount Skid Steer Plates (2) .....\$165
Crud Buster 24' Cultivator.....\$1,000	New 24"x20' Culvert.....\$450
<b>UTVs</b>	New 36"x22' Culvert.....\$630
2016 ODES Dominator X 2-Seat 1000cc 2-Seat UTV.....\$6,500	New 18"x20' Culvert.....\$360
<b>MISC</b>	3pt 22 Ton Log Splitter.....\$975
Jonsered 52" Zero Turn Mower.....\$4,995	74" Clamshell Bucket w/USS mount.....\$2,495
Loftness 60" Skid Steer Mount or (USS) Mount Hydraulic Snow Blower.\$5,500	Used 12" Auger w/gearhead 3pt attachment.....\$995
1983 International Van Truck, 9UR\$4,000	General 66" Front Bucket Shell.....\$565
Back Blade 3pt, 7'.....\$380	General 72" Front Bucket Shell\$1,025
Back Blade 3pt General Implement, 7'.....\$720	New 18" Backhoe Bucket.....\$450
Agri-Ease 5 Ft Back Blade.....\$350	Used Case 12" Backhoe Bucket.\$750
Agri-Ease 6 Ft Angle/Tilt HD Back Blade.....\$650	9" Auger Bit.....\$250
Agri-Ease 7 Ft Angle/Tilt HD Back Blade.....\$645	3pt Cherry Picker.....\$225
Agri-Ease 8 Ft Angle/Tilt HD Back Blade.....\$675	John Deere 12' Grain Drill.....\$1,250
	Pull Type on Rubber Mount V Ditcher.....\$750
	B&E USS Pallet Forks, 48", 4400# \$700
	B&E USS Pallet Forks, 42", 3700# \$550
	1973 International Boom Truck.\$4,500.00
	15' Field Roller Water Fill.....\$5,500.00

**KUBOTA BV SERIES**  
LESS WORK. BETTER BALES.



Unmatched dependability and efficiency is built in. Field after field these hard-working round balers create dense bales and tight outer layers with hassle-free engineering designed to help you have your best season yet.

Visit us to find out why the BV is the right baler for you.

**RICKREALL**  
Since 1947  
**Farm Supply**  
**503-623-2365**  
[www.rickfarm.com](http://www.rickfarm.com)  
130 Main St.  
Rickreall, OR 97371  
*Serving the Willamette Valley Since 1947!*

KubotaUSA.com  
Optional equipment may be shown.

© Kubota Tractor Corporation, 2018