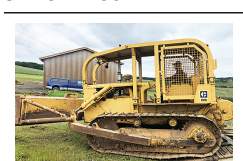


899 Heavy & Indust. Eq.

CEC Screenit: 5x12 screen, \$50,000. Pilot Rock, OR. 541-969-8645

Komatsu Excavator: 98PC200-6, thumb, Quick Coupler, forestry guarding, 1100 hours, \$55,000. Creswell, OR. 541-912-7807



CAT D5 Dozer, Manual Tilt/ Angle Blade, Cable Winch, Asking \$12,500. Sandy, OR. Call Pepe: 503-544-3232; Call Pat: 503-407-9062



2006 Takeuchi TB125, 6150 Hours, (2) 1', 18", 30" buckets, Good Rubber. \$10,000. Salem, OR. Call Bill Martinak 503-931-5261

CASE INDUSTRIAL PARTS
We sell genuine, after market, and used CASE parts at discount prices nationwide. Call For Free Catalog.

CENTRAL EQUIPMENT
AFTER MARKET & USED PARTS
Medford, OR
(888) 593-8749

902 Farm Equip. Parts

899 Heavy & Indust. Eq.

2005 Takeuchi TB135, 4826HRS, Newer Motor, 18", 24", 36" bucket, Good Rubber. \$8,000. Salem, OR. Call Bill Martinak 503-931-5261

905 Antique Farm Eq. & Parts

Farmall 450 Excellent condition. Recent paint, \$2500. (2) Farmall H Tractors. Poor condition. One Farmall 300, poor condition. One Oliver 8355, runs. Make offer. 10ft John Deere Disc, \$200. Toppenish, WA. 509-854-1744



Restored 1959 Massey Ferguson. Total Restoration done. 4 new tires, new paint, \$5250. Clatskanie, OR. 503-728-3562

907 Nursery Equip. & Supplies

Grow Bags: 30 gallon/ \$2 each. 65 gallon/ \$4 each. 200 gallon/ \$8 each. Used one season. Good shape. Large Quantity Discount. Eagle Point, OR. 541-821-3260

902 Farm Equip. Parts

907 Nursery Equip. & Supplies

USED NURSERY CONTAINERS: Used, but reusable nursery containers. All sizes. Inventory changes daily. Call for current availability and prices. Sawyer Farms, Scio OR. 503-769-3417, juddsfarm@wvi.com (also wanted: used containers)

FRESH SAWDUST: Consistently fair pricing. 9 Unit Loads Now Available Forest-Grove, OR. For pricing call 503-849-0216

908 Garden, Turf, Yard Equip.



Hustler 6400 Hillside Slope Mower. Automatic hydraulic cab leveling. 72in. cut. 4 cylinder. Kubota diesel. 6 wheel drive. 750 hours. Safely mows slopes and hill-sides up to 34 degrees. Like new. \$7900. Located in Twin Falls ID. 208-613-0050

911 Hay Equip.



CAT V200B Lift, 3208 auto 3 speed, Cab with left side driver seat. Squeeze attachment and cylinder has been resealed. Great shape and runs good. Email oregongrowing@gmail.com or call/ text. Salem, OR. 503-910-4010

New Holland Bale Wag- on: 1048 upgraded to 1048 Super. 5 speed. Rubber 75% to 85%... Very nice condition. Ready to work, \$17,000 OBO. Harrisburg, OR. 541-554-6214



International 435 Twine Baler. 1/4 turn chute, \$2500. New Holland 1431 MoCo, 3 point with auto tow hitch, \$7500. NW 7' rototiller with X-mas tree stump grinder, \$2500. All stored inside. Lyons, OR. 503-476-7200

Large Supply of Rebuilt New Holland Bale Wagons: Also buying New Holland bale wagons. Sod Busters Sales, Polson, MT. 406-883-2118

#1 Balewagons: Buy, Sell, New Holland 2&3 wide self-propelled, pull-type models, parts, tires, manuals. Caldwell, ID. 208-880-2889 www.balewagon.com

8580 CASE 4x4 Baler: low bale count, field ready, \$6000. Madras, OR. (503)508-7511

New Holland 1095 Stack- er: 3424 hours, \$63,000 OBO. Othello, WA. 509-331-8311

Claas Linder 3100: 2 basket, 33ft width, field ready \$24,000 OBO. Vermeer R2800: 19 to 28ft rake width, all hydraulic, good condition, \$19,000. Lynden, WA. (360)815-0218

New Holland baler BC5080 in great shape, 33,000 bales put through it, stored inside, light package, hydraulic header and swing, full of twine + boxes of twine. \$22,000. Veneta, OR. 541-554-9561

907 Nursery Equip. & Supplies

911 Hay Equip.

New Holland Bale Wag- on 1038 pull behind, single bale unloading feature, good working condition, stored inside. \$8,000. Veneta, OR. 541-554-9561



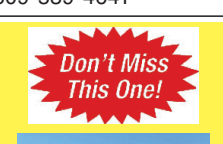
New Holland 8040 Swather 16ft head with reverse and tilt. Clean unit \$45,000. Located Chewelah Washington. Please call 509-993-4128

Taarup 6 disc mower: good condition, \$3,200 OBO. Scio, OR. 541-990-5460 or 503-394-3343

Freeman 370 Baler: Like new, only baled 27,000 bales, recent \$7,600 overhaul, new paint, hydro. \$20,000 OBO. Junction City, OR. 541-998-2429



2018 JCB 530-70 Tele- handler. 178 hours. 26' reach. Bucket and forks, \$90,000. Mesa, WA. 509-539-4641



2017 Case IH WD2504 with a RD163 16' grass seed special rotary header. Only 393 hours, \$89,500.00.

Farm Equipment Headquarters
Pendleton, OR.
541-276-6222



(2) New Holland 585 bal- ers, 15" chambers, Deutz engines, 2181 hours & 2276 hours, \$11,000. Klamath Falls, OR. 541-891-3326

1996 American Eagle Balestacker, Ford tandem axle cabover chassis, 8.3 Cummins, Allison auto, will haul (18) 3x3, (12) 3x4, and (8) 4x4 bales \$49,000. Klamath Falls, OR. 541-891-3326

CASE LBX432 Baler: roller chute, flotation singles \$36,000. Klamath Falls, OR. 541-891-3326

Allen 8827 rake, \$8000. Case 8830 swather, \$11,000. New Holland S1048 bale wagon, \$9000. Goldendale, WA. 509-773-3925

Must Sell: 180H Hyster Hay Squeeze, \$10,000. **John Deere 5830 Chopper.** Forest Harvester, \$30,000. **New Holland 1440 Mower Conditioner,** \$10,000. Cloverdale, OR. 503-812-6360

2019 Roadrunner Hay Squeeze: Like new, excellent condition. 3 stage mast, \$189,500. Rickreall, OR. 503-930-1904

Twinstar V Rake 2024 Excellent condition, low hours, \$18,000. Castle Rock, WA. 360-274-4422



Highline Bale Feeder 2015 CFR650, OWNER OPERATED, WELL MAINTAINED. \$10,500. Lakeview, OR. 541-219-2698

907 Nursery Equip. & Supplies

911 Hay Equip.

International Mower Conditioner, 9ft cut for parts, \$150. Yamhill, OR. 503-662-3701, 503-437-5048

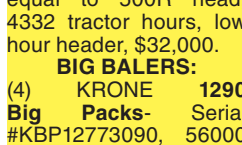
New Holland 1431 Disc Mower, 2005/ 2006, \$8000. Turner, OR. 503-932-7130

Massey Ferguson 1839 Center Line Baler, \$18,000. John Deere 338 Baler, \$5000. Ferrdale, WA. 360-366-3611

RETIRING: HAY RAKES: (2) Twinstar G2- \$22,000. (3) Twinstar 2030- Rakes double frame, \$13,000. (3) Harrell 8827: 12' Twinstar baskets, \$10,000. 12' Baskets, new teeth, extended frame, \$4,000. 10.5' Twinstar baskets, extended frame, \$4,000.

JOHN DEERE WINDROWER SWATHERS: R450- 500R head, 1455 tractor hours, 1093 header hours, \$85,000. 4990- 995 16ft head with all Hay tools conversions equal to 500R head, 6411 tractor hours, low hour header, \$28,000. 4990- 995 16ft head with all Hay tools conversions equal to 500R head, 4332 tractor hours, low hour header, \$32,000.

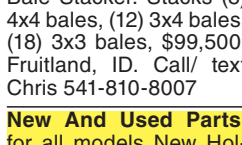
BIG BALERS: (4) KRONE 1290 Big Packs- Serial #KBP12773090, 56000 bales, \$25,000. HDP HS- Serial #BP2Z933934, 9000 bales, \$95,000. HDP HS- Serial #KBP12885108, 25054 bales, \$60,000. HDP HS- Serial #KBP12874921, 27284 bales, \$50,000. Connell, WA. Call/ text 509-282-2355



"New" Mil-Stak PT 2150 Bale Stacker. Stacks (8) 4x4 bales, (12) 3x4 bales, (18) 3x3 bales, \$99,500. Fruitland, ID. Call/ text Chris 541-810-8007



New And Used Parts: for all models New Holland bale wagons. Largest inventory in North America. Sod Busters Sales, Polson, MT. 877-735-2108 or 406-883-2118



2013 New Holland 340 Big Baler- 10,000 bales, moisture meter, bale chute extension, bale chute ski's, scales, camera on back and folding bale chute, ready to go, One Owner. Excellent Condition, \$65,000. Southeastern, OR. 541-219-0741

1987 Littau Berry Har- vester SP87-06. Side row, 32" tunnel, rotary. Excellent condition. Well maintained, \$25,000. Silverton, OR. 503-362-3080



Swather: One owner, 2011 New Holland H8080 swather, with 416, 16' disc- bine header, deluxe cab, electric mirrors, 1900 +/- hours, \$69,500. Southeastern, OR. 541-219-0741

2 Krone 1290 balers, 3x4, \$50,000. New Holland BW28, Mil-stak and 3 tie attachments, \$110,000. Silver Lake, OR. 541-480-3371

Jessee Machine Works: NUT HARVESTING EQUIPMENT
530-342-4379
JesseeMachineWorks.com

Portable Toilet Trailers
GGAP Compliant
Single or Double Trailers
Starting at \$2050!
B&L Fabrication, LLC
503-932-3498
www.bnlfab.com
Salem, OR.

Braber Tedder Rake TR300: \$2750. Like new condition. Yakima, WA. 509-728-6791

Mower conditioner, Kuhn 350 Gyro, 12' cut. Can deliver, \$4500 OBO. Enumclaw, WA. 360-825-6548

Baler, New Holland 575, shedded, hydraulic tensioner, 1/4 turn chute, \$7500 OBO. Enumclaw, WA. 360-825-6548

2003 & 1993 Littau Over the Row Harvesters. Current on maintenance and upgrades. All for \$95,000. Cash Only. Albany, OR. Call Rod 541-901-8068, Larry 541-220-0844

600 gallon turbo mist airblast, new electric valves, fully serviced and field ready, \$14,000. Silverton, OR. 503-932-0766

2003 & 1993 Littau Over the Row Harvesters. Current on maintenance and upgrades. All for \$95,000. Cash Only. Albany, OR. Call Rod 541-901-8068, Larry 541-220-0844

600 gallon turbo mist airblast, new electric valves, fully serviced and field ready, \$14,000. Silverton, OR. 503-932-0766

600 gallon turbo mist airblast, new electric valves, fully serviced and field ready, \$14,000. Silverton, OR. 503-932-0766

600 gallon turbo mist airblast, new electric valves, fully serviced and field ready, \$14,000. Silverton, OR. 503-932-0766

600 gallon turbo mist airblast, new electric valves, fully serviced and field ready, \$14,000. Silverton, OR. 503-932-0766

911 Hay Equip.

PRESEVOR HAY TREATMENT
THE SHIELD OF IBA QUALITY AND VALUE

Available in Oregon & SW Washington from NW Animal Supply

- Combats Shattered Leaves
- Stop Heating & Mold
- Hay Moisture 15 to 30%
- Not Propionic Acid
- Patented Potassium Sorbate Formula
- Will Not Rust Metal
- No Offensive Odor or Flavor

Find Product Info:
IBA-USA.com
GEORGE SAUL
GASTON, OR
503-985-1001

PRESEVOR HAY TREATMENT
THE SHIELD OF IBA QUALITY AND VALUE

Available in Oregon & SW Washington from NW Animal Supply

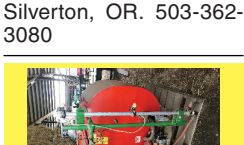
- Combats Shattered Leaves
- Stop Heating & Mold
- Hay Moisture 15 to 30%
- Not Propionic Acid
- Patented Potassium Sorbate Formula
- Will Not Rust Metal
- No Offensive Odor or Flavor

Find Product Info:
IBA-USA.com
GEORGE SAUL
GASTON, OR
503-985-1001

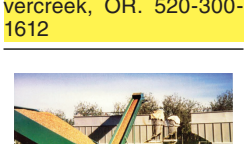
917 Orchard/ Vineyard Equip.



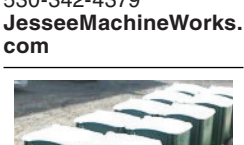
1987 Littau Berry Har- vester SP87-06. Side row, 32" tunnel, rotary. Excellent condition. Well maintained, \$25,000. Silverton, OR. 503-362-3080



2016 Rears Pak Tank with foam marker kit, low hours \$3,200. Beaver creek, OR. 520-300-1612



Jessee Machine Works: NUT HARVESTING EQUIPMENT
530-342-4379
JesseeMachineWorks.com



Portable Toilet Trailers
GGAP Compliant
Single or Double Trailers
Starting at \$2050!
B&L Fabrication, LLC
503-932-3498
www.bnlfab.com
Salem, OR.

Braber Tedder Rake TR300: \$2750. Like new condition. Yakima, WA. 509-728-6791

Mower conditioner, Kuhn 350 Gyro, 12' cut. Can deliver, \$4500 OBO. Enumclaw, WA. 360-825-6548

Baler, New Holland 575, shedded, hydraulic tensioner, 1/4 turn chute, \$7500 OBO. Enumclaw, WA. 360-825-6548

2003 & 1993 Littau Over the Row Harvesters. Current on maintenance and upgrades. All for \$95,000. Cash Only. Albany, OR. Call Rod 541-901-8068, Larry 541-220-0844

600 gallon turbo mist airblast, new electric valves, fully serviced and field ready, \$14,000. Silverton, OR. 503-932-0766

600 gallon turbo mist airblast, new electric valves, fully serviced and field ready, \$14,000. Silverton, OR. 503-932-0766

600 gallon turbo mist airblast, new electric valves, fully serviced and field ready, \$14,000. Silverton, OR. 503-932-0766

600 gallon turbo mist airblast, new electric valves, fully serviced and field ready, \$14,000. Silverton, OR. 503-932-0766

917 Orchard/ Vineyard Equip.

3 gallon Galvanized Buckets (45), good condition, \$3.00 each. Newberg, OR. 503-538-2688

ORCHARD & VINE EQUIPMENT

Duetz Allis 6260: 4WD, cab, front 3 point, \$8000. **Massey Ferguson 1533:** 4WD, cab, 900 hours, \$16,000. **Case 885:** 4WD, cab, \$8000. **Fords:** 3000, 3600, 4000 & 5000 2WD, diesel, power steering. Call for price. **Gearmore:** 300 gallon, PTO sprayer, \$10,000. **Gearmore Duster:** poly, 3 point, PTO, \$2000. **Schmeiser:** adjustable 5-6' 3 point, disc & roller, \$5000. **Domries:** 3 point disc, adjustable 6-8', \$6500. **Rears:** 100 gallon weed sprayers: PTO, 3 point, \$1,200. **Vine Star Gondolas:** 6 ton narrow & wide, \$6,500 each. **Vine Star:** PTO, olive or grape. Harvester/ bow rod, \$25,000 each. **Allis Chalmers:** 9' wheel disc & roller, good condition, \$5000. **Vrismo:** 5-8' flail mowers & shredders. Acampo, CA. Call Dave 916-806-7431 to offer and details. **dave-taylor@sbcglobal.net**

Rears Air Blast: 3 point, 150 gallon, stainless, 32" 2 speed fan, \$3900. Woodburn, OR. 503-982-1710

2004 Challenger MT765B. 32" rubber, 5825 hours, \$60,000. Aumsville, OR. 503-931-8781

2014 John Deere 5100E Tractor with H260 loader, 100HP, quick hitch, hydraulic top link. 273 hours, excellent condition, \$45,000. Beaver creek, OR. 520-300-1612

2004 Challenger MT765B. 32" rubber, 5825 hours, \$60,000. Aumsville, OR. 503-931-8781

2004 Challenger MT765B. 32" rubber, 5825 hours, \$60,000. Aumsville, OR. 503-931-8781

2004 Challenger MT765B. 32" rubber, 5825 hours, \$60,000. Aumsville, OR. 503-931-8781

2004 Challenger MT765B. 32" rubber, 5825 hours, \$60,000. Aumsville, OR. 503-931-8781

2004 Challenger MT765B. 32" rubber, 5825 hours, \$60,000. Aumsville, OR. 503-931-8781

2004 Challenger MT765B. 32" rubber, 5825 hours, \$60,000. Aumsville, OR. 503-931-8781

2004 Challenger MT765B. 32" rubber, 5825 hours, \$60,000. Aumsville, OR. 503-931-8781

2004 Challenger MT765B. 32" rubber, 5825 hours, \$60,000. Aumsville, OR. 503-931-8781

2004 Challenger MT765B. 32" rubber, 5825 hours, \$60,000. Aumsville, OR. 503-931-8781

2004 Challenger MT765B. 32" rubber, 5825 hours, \$60,000. Aumsville, OR. 503-931-8781

2004 Challenger MT765B. 32" rubber, 5825 hours, \$60,000. Aumsville, OR. 503-931-8781

2004 Challenger MT765B. 32" rubber, 5825 hours, \$60,000. Aumsville, OR. 503-931-8781

2004 Challenger MT765B. 32" rubber, 5825 hours, \$60,000. Aumsville, OR. 503-931-8781

2004 Challenger MT765B. 32" rubber, 5825 hours, \$60,000. Aumsville, OR. 503-931-8781

2004 Challenger MT765B. 32" rubber, 5825 hours, \$60,000. Aumsville, OR. 503-931-8781

2004 Challenger MT765B. 32" rubber, 5825 hours, \$60,000. Aumsville, OR. 503-931-8781

2004 Challenger MT765B. 32" rubber, 5825 hours, \$60,000. Aumsville, OR. 503-931-8781

2004 Challenger MT765B. 32" rubber, 5825 hours, \$60,000. Aumsville, OR. 503-931-8781

2004 Challenger MT765B. 32" rubber, 5825 hours, \$60,000. Aumsville, OR. 503-931-8781

2004 Challenger MT765B. 32" rubber