

**805 Farm Buildings**  
 Martin Cisneros Pole Buildings & Concrete: Shops, garages, arenas, hay storage. Agriculture/ Residential, additions and repairs. Serving Oregon CCB# 135771. Licensed, bonded and insured. Excellent references. 503-375-9273 or 503-507-2847

**813 Antiques & Collectibles**  
 Bedroom set from the Whitman Hotel. Good Condition. Bed, Night stand dresser. Best offer. Boise, ID. 208-207-6748

**821 Christmas Trees**  
 Cash Paid. Top Prices. Christmas Tree Fields. Any Condition. Oregon, Washington. 503-873-6774, 503-551-5809.

**Want to Buy:** A good used Christmas tree planter. Call: 503-838-3779 or 503-428-6577

**822 Nursey Stock - Plants**

EMERALD GREEN ARBORVITAE: rooted cuttings and 2-1/4", liners available. Forest Grove, OR. Call 503-359-7540



Hazelnut Trees: Mc Donald, Jefferson, Yamhill, Wepster, York, Eta, Theta, Felix. Dayton, OR. 503-864-4422

**Blueberry Plants**  
 OREGON BLUEBERRY NURSERY • GENETICS • FARM  
 For pricing and freight quotes call/text 541-602-9477 or e-mail: info@potentgrow.com

**Northern Highbush**

**Southern Highbush**

**Rabbiteye**  
 "Providing superior plants and service for over 35 years."  
 (503) 873-1200  
 oreblueberry.com



**Up-to-date agricultural and natural resource news.**  
 ANY TIME. ANY WHERE.  
 Don't miss another issue! Subscribe today.

**CAPITAL PRESS**  
 1-800-781-3214  
 CapitalPress.com

**Clockwork**  
 Make This Your First Choice for a One Pick Blueberry Variety.  
 FALL CREEK FARM & NURSERY, INC.  
 1.800.538.3001 | www.fallcreeknursery.com

**822 Nursey Stock - Plants**  
**HAZELNUT TREES ALLUVIAL ACRES NURSERY**  
 RESERVE NOW FOR FALL Polly-O, Yamhill, Mcdonald, Wepster, Jefferson, Pollenizers. Scio, OR 503-508-4684  
 Sacajawea, Doris, York, Wepster **Hazelnut Trees**, 4 years old, \$6-\$8. **Blueberries, Duke, Legacy:** 3 year old plants, \$2.50 each. Crabtree, OR. 503-871-9114

**824 Seed**  
 6000 pounds Garrison Creeping Foxtail, \$4/ Lb. 2700 pounds Siberian Wheat Grass P27, \$4/ lb. Lakeview, OR. 701-570-5600

**ALFALFA SEED**  
 Quality VNS Alfalfa Seed: \$2.00/lb. Touchet, WA. Chris Kregger 509-394-2400

Pasture Seed \$1.20/ lb. Lawn Seed \$1.20/ lb. Wheat Straw \$120/ ton. Grass Hay \$180/ ton. Wheat \$6/ bag. Rickreall, OR. 503-623-6922

**GRASS SEED:** Pasture Blend Orchard grass/ Tall Fescue. No endophytes. \$1.75 lb. Jefferson, OR. 503-871-6340

**SUDAN GRASS:** cover crop seed. Also Cowpeas (summer Legume). Albany, OR. Text/ call 541-905-2111

**825 Fertilizer**  
**POTENTGROW**  
 Organic Fertilizer  
**AG SERVICES**  
 •Transportation  
 •Warehousing  
 •Chicken litter/ manure  
 •Organic fertilizer  
 •Hemp logistics  
 For pricing and freight quotes call/text 541-602-9477 or e-mail: info@potentgrow.com

**826 Organic**  
 900 Bales of Organic Haylage: good quality, \$55/ bale. Scio, OR. 503-932-1005

**828 Misc for Sale**

**Extra Income!**

**START YOUR OWN BUSINESS!** Calf Pail injection molds for sale. Unique round bottoms. No waste. 3 molds total, \$75,000. THIS MAKES A GREAT SIDE BUSINESS FOR YOUR FARM OPERATION! RIPPON, CA. 209-402-1804, profab.sam14@gmail.com

**Large Quantity of Well Aged Mint Compost!** Dump trailer or single axle trucks, \$75 per load, up to 10 yards. Double axle trucks \$100 up to 15 yards. You Haul. Independence, OR. Call/ Text Larry 541-829-2828

**3/4" Italian Slate** standard size pool table. Complete. Perfect condition, \$500. Cable Player Piano. Double sounding board, \$500. Pictures Available. Toppenish, WA. 509-854-1744

**835 Hemp**  
 DPI Self Contained, towable field conveyor. 22" wide, 10' discharge height. Variable speed, hydraulic driven belts. Honda Gas Motor. Work light, highway towable with trailer light. Detachable bulk dump cross conveyor. Detachable wings for both cross and main conveyors. Drive over for belly dump. Low hours. Like new, \$22,000. Gervais, OR. Contact Brent 503-580-2286

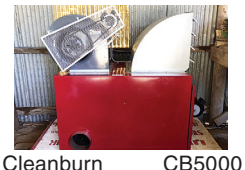
**872 Dairy Eq. & Supplies**  
 Toft unloading feed box. mounted on 1976 International truck. \$2500 OBO. Yamhill, OR. 503-351-2255

**887 Irrigation Equip.**

**822 Nursey Stock - Plants**

**835 Hemp**  
 Magical Seed Co. Hemp varieties (High CBD, Low THS). Large or small quantities. Germination tested 95%+ Place your order. 206-910-0907; 206-910-0911 Maple Valley, WA.

**Large Quantity of Well Aged Mint Compost!** Dump trailer or single axle trucks, \$75 per load, up to 10 yards. Double axle trucks \$100 up to 15 yards. You Haul. Independence, OR. Call/ Text Larry 541-829-2828



**Cleanburn CB5000 Waste Oil Heater.** Professionally reconditioned. 53' High Cube cargo container; raised flooring for drying, end/ side doors, \$15,000 plus shipping. Container only: \$9,900 + shipping. Heater: \$5800. Bandon, OR. 541-551-1192



**\*HEMP\***  
 Custom plastic laying and hemp planting with water wheel planter 3 - 6' spaced rows at a time with many choices for in row spacing on plants (RainFlo Equipment). All GPS done with very modern equipment and latest technology. Call ASAP to secure your planting date with our professional team! 503-437-4833



**HEMP EQUIPMENT**  
 Selling 2019 equipment used to do 60,000 plants. Included are a **2019 Powell 6031 Harvester** (was \$37,000 new); a **2019 Rainflo 1600 Waterwheel Transplanter** (was \$4,600 new); heat mats, plus **grow lamps** for 25,000 seedlings (was \$16,000 new); entire lot can be purchased for \$35,000. Vinton, CA. Call Kevin 360-852-7133.

**863 Refrigeration Equipment**

**Commercial REFRIGERATION & HVAC**  
 Serving OR/ SW WA- 24 hrs Northwest Mechanical Group  
**888-652-4540**  
 NWMechanicalGroup.com

**869 Livestock Equip. & Supplies**  
 Highway guard rail for cattle pens. Roseburg, OR. 541-944-3878  
**Livestock Panels:** 16' (6) rail, (3) brace, \$117 each. 12' panels, (6) rail, (2) brace, \$88. Bow gates, all lengths and sizes. These panels are new Green color, hundreds available. **Heavy 16' Feeder Panels**, \$330 each. La Grande, OR. 541-805-9279, 541-963-6258



**872 Dairy Eq. & Supplies**  
 Toft unloading feed box. mounted on 1976 International truck. \$2500 OBO. Yamhill, OR. 503-351-2255

**887 Irrigation Equip.**

**872 Dairy Eq. & Supplies**  
**Germania Milking Parlor** double 12, rapid exit, herringbone style, \$10,000 OBO. Cloverdale, OR. 503-812-6360

**Polydome Calf Nursery:** Hutches available for various climates. Western Polydome, Inc. Monroe, WA. 800-822-5837

**NEW MANURE SPREADER**  
**400 bu. • BUY OR RENT**  
 Call Scott at Barr-Tech Compost/Organics Recycling Authorized Dealer of PIK RITE Spreaders  
**509-590-0437**  
**www.Barr-Tech.net**  
 Sprague, WA 5174460-1

**875 Tanks & Storage**  
 Water storage tanks: 5000 gallons, \$1950 each. All in good condition. Eagle Point, OR. 541-821-3260

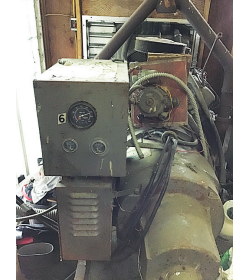


(2) 2350 gallon water tanks with lids and steel stands, \$1500 each. Scio, OR. 503-330-4835

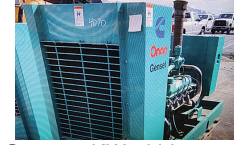
**FUEL TANKS:**  
 Used single wall tanks 1500 & 2000 gallons. New 1000, 2000, 3000 and 4000, etc. gallon double walled tanks. Salem, OR. Peter 503-881-9803



**GENERATORS:** Used, low hour takeouts, 20kW to 2000kW, diesel, propane, & natural gas. Cooperstown, ND. We ship nationwide. 701-371-9526 or 701-367-4305 abrahamindustrial.com

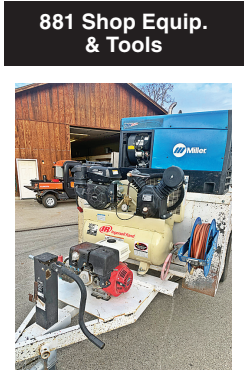


75KW stationary GE generator, IH 549 engine. Make offer. Ferndale, CA. 707-845-7323



**881 Shop Equip. & Tools**  
 14" Mark 1 Band Saw: wood/ metal, mobile stand, good condition, \$70. La Center, WA. 360-690-5797, morselodge@gmail.com

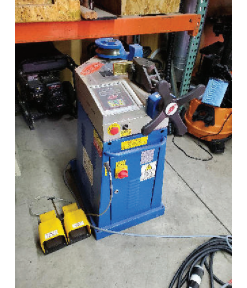
**887 Irrigation Equip.**



**881 Shop Equip. & Tools**  
 Homemade Tool Trailer with Utility Box. Attached welder, compressor, power washer, misc. tools, \$5995. Trout Lake, WA. 360-901-3804



**ENCO 30 Milling and Drilling Machine.** 220V, 3 phase. Very nice condition. Hold down tooling included. Model 105-1280. \$1500. Grants Pass, OR. 541-474-5003



**NEVER USED, BRAND NEW EROCOLINA TUBE BENDER.** TB60. BOUGHT FOR CLIENT WHOSE BUSINESS CLOSED. MAX TUBING 1/4" WALL X 2 1/2" DIAMETER, PIPE MAX 2" SCH40. COMES WITH FULL SET OF TUBING DIES; 3/4", 7/8", 1", 1 1/4", 1 1/2" AND 2". 230 3-PHASE \$16,000 OBO. JUNCTION CITY, OR. 541-554-1541

**887 Irrigation Equip.**  
 Sure Roll Wheel Lines. Good Shape, \$3000 each. Mesa, WA. (509)521-7860

**2014 Micro Rain Irrigation Sprinkler.** Low hours, great condition, \$8500. Castle Rock, WA. 360-749-4422

**Frost Protection**  
**H Pipe & Supply**  
 Authorized Factory Dealer of Orchard-Rite Wind Machines  
 598 Baseline  
 Cornelius, OR  
 Office: 503-357-4217  
 info@hpspipe.com

**High Quality Brass Vyrsa Impact Sprinklers**  
 1/2" Part Circle \$15.60  
 1/2" Full Circle \$11.70  
 3/4" Part Circle \$25.74  
 3/4" Full Circle \$14.88  
 Call For Bulk Pricing and FREE Brochure!  
**WaterTec**  
 (360) 393-4923  
 www.watertecna.com  
 Lynden, WA

**881 Shop Equip. & Tools**  
 2008 MultiQuip 6in. self priming pump. Self contained on trailer. Deutz 3 cylinder diesel. Well maintained, very clean and operates like new, \$8900. Located in Twin Falls ID. Call 208-613-0050

**887 Irrigation Equip.**

**WATER MASTER SERIES AND EVERGREEN**  
**SUPERIOR SERVICE & DESIGN**  
 • All your needs for irrigation parts service  
 • We build custom equipment for your special needs  
 • Hose replacements & fusion repairs  
 • Transport Tanks • Rental Returns & Used Equipment  
 • Structural and steel available for purchase  
**VALLEY WORKMAN**  
**Truck Equipment**  
 • Full Service  
 • Alterations  
 • Dump Bodies • Hoists  
 • Farmbeds • Flatbeds  
**VALLEY FAB**  
 10910 Portland Rd. NE • Brooks, OR  
 Call: 503-792-3739 • Fax: 503-792-3738

**887 Irrigation Equip.**

**887 Irrigation Equip.**  
**(57) Used Pivots:** Engines, pumps. Garden Valley, ID. Call Mike at 208-420-1480, or see www.pivotsplus.com



**IRRIGATION EQUIPMENT:**  
 (14) Used 1/4 mile wheel lines, 5hp Green single frame field king 6", 5hp Green dual frame ranch king 5", 8hp Travis single frame 5", 4" & 5" pipe, \$6000 each. Various mover frames also available. Dixon, CA. 800-734-8859

**1200' 6" aluminum main line,** 60' openers, hook and latch, good shape, no leaks, \$3.00/foot. **1000' 5" Moore Rain,** 60' openers, 3 valve openers no leaks, \$2.00/foot. Terrebonne, OR. 541-419-8370

**WANTED:** Motor driven irrigation pump. Gas or Diesel. 800GPM, 100PSI. 701-570-5600

**2014 NEW Gorman-Rupp Model T6A3S-B 6" "Super T" Series self-priming centrifugal pump** in standard cast iron construction with oil lubricated tungsten titanium carbide mechanical seal and 6" suction and discharge NPT flanges. Pump mounted on a fabricated steel horizontal belt base and flexible coupler to a TECO-Westinghouse Model EP0404; 40HP, 1750RPM, 286T frame; 3 phase, 230/460/VAC, 60Hz. Premium Efficient, inverter duty rated, VFD motor. 1000 GPM at 70' TDH; 30 PSI. Never run. Best offer. Red Bluff, CA. Call Mark: 530-200-2644



**Westinghouse IRRIGATION/ HYDRANT PUMP assembly:** 100hp, 480/277v, 3ph 1500 gpm, 150"Lx55"Wx45"H, soft start controller/ panel, \$6400 OBO. Ferndale, WA. 360-380-2907

**25HP Goulds 12 stage well pump,** 550GPM, 120' of 6" column, \$7500. Brand New. Malin, OR. 541-892-2117

15 pieces Irrigation Pipe: 40'; 4" main line. 10 pieces: 40'; 5" main line. All hook and latch. Madras, OR. 503-508-7511

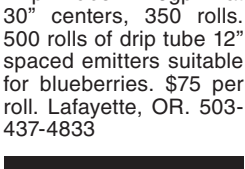
**WANTED:** Water Winch Soft hose irrigation gun. Any condition; or Heinzman any condition. 541-761-0405, 541-660-4001

**1000' used 10" Wosco mainline** with valves, in good shape, **REDUCED TO \$5.25/ foot.** Prices negotiable. Hillsboro, OR. 503-260-5828



**2017 Deere 544K-II 1680 hours,** quick attach bucket, real nice low hour machine. Ready to work. \$139,000. Cove, OR. 541-910-8024

**889 Heavy & Indust. Eq.**



**889 Heavy & Indust. Eq.**

**887 Irrigation Equip.**  
**Pivots: All brands.** No rust. Plus buried wire. Call Keizer, OR. Cell 503-881-3232

**Used Valley 600 circle,** 7 stands, 6-5/8" pipe, newer select control panel, new pipe on corner, 1000 8' system, 174' corner, 82' overhang, \$17,000. Near Pasco, WA. 509-380-7171

**Cadman 3750XL** hardnose sprinkler reel, \$16,500. Rickreall, OR. 503-838-3740, 503-383-6722



**Thompson 8in. Towable Diesel Pump.** Perfect for dewatering or irrigation use. Self priming. 6 Cylinder Deutz diesel. One owner former Municipal pump that has very low hours and is in like new condition. It's better than a new one. \$14,900. Located in Twin Falls ID. Call 208-613-0050

**890 Packing/ Processing Eq.**

**LOOK!**  
 100 gallon, stainless steel, steam distiller. 220 volt. Like new. \$21,000. Halsey, OR. 541-760-9112

**Used Super Sacks.** Used once. Stovepipe Top: \$3. Opened Top: \$5. Salem, OR. 503-932-8598

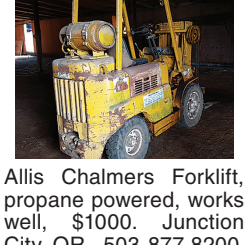
**893 Logging Equip.**



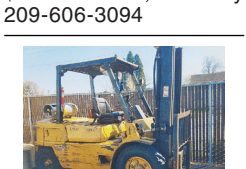
**Lightly Used Farni 351P Forest Logging winch,** also extras, \$3500 firm. Paisley, OR. 541-219-2557

**1996 EX200-5 Hitachi Excavator:** thumb, excellent condition, all original, 7500 hours, \$29,000. Creswell, OR. 541-912-7807

**896 Forklifts**



**Allis Chalmers Forklift,** propane powered, works well, \$1000. Junction City, OR. 503-877-8200



**Champ Forklift for parts.** Model 350-80. Good engine and hydraulic system, good rubber, 30ft lift, 8000 lb unit. Has transmission problem, \$1500. Turlock, CA. Gary 209-606-3094



**2017 Deere 544K-II 1680 hours,** quick attach bucket, real nice low hour machine. Ready to work. \$139,000. Cove, OR. 541-910-8024

**899 Heavy & Indust. Eq.**

**899 Heavy & Indust. Eq.**



**1997 CAT 307B Excavator,** 2 Buckets, thumb, blade, Asking \$24,950. Sandy, OR. Call Pepe: 503-544-3232; Call Pat: 503-407-9062



**1996 EX200-5 Hitachi Excavator:** thumb, excellent condition, all original, 7500 hours, \$29,000. Creswell, OR. 541-912-7807



**Takeuchi TL 140 Skid-steer.** 2900 Hours. Dealer Serviced. Asking \$24,500. Sandy, OR. Call Pepe: 503-544-3232; Call Pat: 503-407-9062



**CAT Excavator 345B:** 5' bucket and muck bucket, thumb, 36" tracks, 13,700 hours, Ready to work, \$39,000. Seaside, OR. 503-440-4925

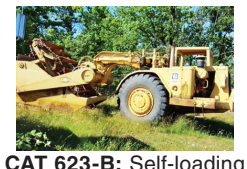
**REPLACEMENT DECAL SETS**  
 Construction, Forestry & Ag Equipment. Fast, Knowledgeable, Reliable Service. 215-536-5339 email: info@CustomServicesCompany.com  
 Thousands of sets, Old & New, in our digital inventory. **www.QuipCal.com**



**(2) 2014 Case TV380 Skidsteers,** GP Bucket, Asking \$24,950.00 each. Sandy, OR. Call Pepe: 503-544-3232; Call Pat: 503-407-9062



**2010 Cat 307d,** 3500 hours, 2 buckets, blades, \$42,000. **2016 John Deere 85G** excavator, hydraulic thumb, \$75,000. Silvertown, OR. 503-932-0766



**CAT 623-B:** Self-loading scraper, good condition, Reduced \$29,500. Salem, OR. 503-362-3055



**CAT D8:** Cable Control, 1960s era, pony motor. Great workhorse, \$7000. Junction City, OR. 503-877-8200



**2013 Bobcat T550;** 1990 hours, new tracks, \$28,000. Gaston, OR. 503-789-3726

**R & G MACHINING AND ENGINE PARTS**  
 COMPLETE DIESEL MACHINE SHOP AND TRUCK REPAIR  
 MULINO, OREGON • SHOP: 503-829-6038 • NATIONWIDE: 1-800-823-6038  
 We Absolutely, Positively Have The Best Remanufactured Engines Available Anywhere!  
 Huge Inventory • Expert Technical Assistance

**ENGINES BY R&G MACHINING**

FORD	CHRYSLER & JEEP
300.....\$1,595	4.0-4.2.....\$1,895
4.6-5.4.....\$2,895	318-360.....\$1,899
302-351-400.....\$1,895	440.....\$2,899
360-390.....\$1,995	488 V10.....\$3,395
415-V10.....\$3,295	
429.....\$2,499	TOYOTA
460 '72-'92.....\$1,899	22RE.....\$1,395
GM	
4.3 V6 '85-'91.....\$1,595	
350 '69-'88.....\$1,595	
350 '89-'02.....\$1,899	
454 '75-'87.....\$1,895	

**REBUILT DIESEL L/B ENGINES**

CUMMINS	MITSUBISHI & NISSAN
3.9-4B1.....\$3,395	Starting at.....\$5,995
5.9 '88-'02.....\$3,695	
5.9 '03 &	