

**923 Farm Equipment**



**Portable Toilet Trailers**  
GGAP Compliant  
Single or Double Trailers  
Starting at \$2050!  
B&L Fabrication, LLC  
503-932-3498  
www.bnlfab.com  
Salem, OR.

**Jay's EQUIPMENT SEAT COVERS**  
PROTECT YOUR SEAT!

**Equipment Seat Covers**  
Fits: Tractors, Forklifts,  
Loaders, Backhoes, Skid  
Steers, Excavators, Semi  
Trucks, More.  
541-401-5933  
EquipmentSeatCovers.com



**NEW IA Pasture Aerators:** Bolt on teeth. Heavy Duty Frame. 8ft \$4995; 10ft \$6995; 12ft, \$7995 includes cement blocks. Bend, OR. 541-548-7185 mtcsales.net

**CLASSIFIED LINE ADS GET RESULTS**  
1-800-882-6789  
CapitalPress.com

**GREYN FERTILIZER SUPPLY**



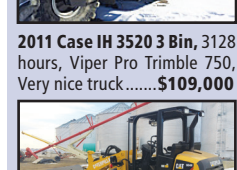
**Case 921E Loader, Cummins diesel.** 5430 hours. Incredible loader big bucket. Like new tires. \$88,000



**2010 International 7400, 310 Diesel engine, Allison auto, New Leader L4000 G4, 3,066 hrs. \$88,000**



**2014 Case IH Titan 4530 3 Bin, 1863 hrs, 70 ft. \$142,500**  
**2014 Case Titan 4530, 3 bin, 5006 hrs. \$98,500**



**2011 Case IH 3520 3 Bin, 3128 hours, Viper Pro Trimble 750, Very nice truck. \$109,000**



**2010 Caterpillar 904H Articulating Loader, diesel engine, 2 speed, ROPS, 72" bucket. \$29,500**



**2013 Merritt Rapat Conveyor Trailer. Air Ride, Electric Roll Tarp. \$44,500**



**2014 RoGator RG 1300 with new leader G4 bed, 3220 hrs. \$112,000**



**2016 Terra Gator TG8400B, 1,662 hours. New Leader L3220 G4, belt/chain. Viper Pro. \$139,500**



**2000 Caterpillar 924G High Lift Wheel Loader, 13,095 hours. \$33,500**



**2006 Ingersoll-Rand WL-440 Wheel Loader, Kubota diesel, shuttle shift, 75" bucket, 4' forks, 1,737 hours. \$33,500**

**Greyn Fertilizer Crop Specialist**  
For a complete selection, visit us at [www.fertilizer-equipment.net](http://www.fertilizer-equipment.net)  
406-466-5356  
Choteau, MT

**923 Farm Equipment**

**WANTED:** West German MWM Diesel Engine. Model D226-3. 2700RPM. 60HP. 360-295-0966

Brent disc ripper, 5 shank, notched blades. New tire and cylinder, \$10,500. Albany, OR. 503-510-7779

15' Northwest rototiller, newer gear box and blades, \$11,000. Albany, OR. 503-510-7779

**RELOCATING-Huge CLEARANCE Sale:** John Deere 1209 mower conditioner, \$2450. John Deere 1207 mower conditioner \$1950. 6 disk Lely mower, \$1950. Brush hog rotary mower, \$2250. Plows (all sizes), several off-set discs 15'-28", disc mowers, grain drills, blades, manure spreaders, tandem axle manure spreader, rototillers, combine weed headers, etc. Lots of hay equipment. Everything Farm Related! **EVERYTHING MUST GO!** Rickreall, OR. 503-838-3740, 503-383-6722



**2014/2015 Hesston 1844S, 3 tie baler. Excellent Condition, \$45,000.** Bend, OR. 541-377-0040

**DISTILLERY EQUIPMENT:**

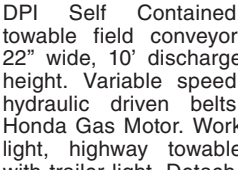
Excellent condition.  
•LIKE NEW- 2006 500 HP Cleaver Brooks boiler, model CB1-200-500-150, gas/ oil fired, emission controls, shedded. You load and haul, \$150,000 OBO.  
•1964 250 HP Pawnee (Superior) gas/ oil fired boiler, \$10,000.  
•(5) NEW 2015 New House pyramid separators, automated.  
•Several New House separators and condensers  
•2012 Parma 15 HP lift pump.  
•2 New House re-distills.  
•Toledo Scale.  
•Miscellaneous distillery equipment: aluminum piping, hookups, etc. Othello, WA. 509-989-6070  
32' J&M roller; 16' Northwest tiller, 8300T; 6420 loader; 21' and 25' Heavy Harrows; 48' Summers harrow; 21' chisel; 7x switch plow; 16' off-set disk; New Holland TX66; John Deere 8820, MacDon 15' draper; 15' Rears Pak-Chopper; 400 gallon airblast; irrigation reels, Woodburn, OR, 503-454-8047



**2007 Miller Nitro 3200T Sprayer. 1665 hours. 60/ 90ft boom. 1000 gallon stainless tank. 320/90R50 and 850/50R30.5 tires. Aumsville, OR. 503-931-8781**



**DPI Self Contained, towable field conveyor. 22" wide, 10' discharge height. Variable speed, hydraulic driven belts. Honda Gas Motor. Work light, highway towable with trailer light. Detachable bulk dump cross conveyor. Detachable wings for both cross and main conveyors. Drive over for belly dump. Low hours. Like new, \$22,000. Gervais, OR. Contact Brent 503-580-2286**



**2013 RoGator tractor with conveyor. \$112,000**

**923 Farm Equipment**



**Fella M208 5 disc mower.** In good used condition with approximately 100 hours on it. \$3,750. McMinnville, OR. 503-437-0252

**New Holland Grain Cart:** Field Ready, \$1000. Mesa, WA. 509-521-7860

**H-2A LABOR & HOUSING**

**H-2A Farm Labor & Housing available.** Housing starts @ \$10/ day. Yakima - Hermiston Region. AgriLabor - "Labor Where you want it, When you want it!" 541-571-5989 AgriLaborInc.com

**New Holland 782 forage chopper with pickup head, \$1500.**  
**New Holland 892 forage chopper with pickup head and long spout, \$2500.**  
**2 row corn head available, fits either chopper.** Curtis, WA. 360-520-1366

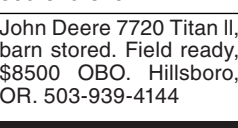
**John Deere 210 Disk:** 15' rear hitch with hydraulics. Blades 90% plus. All Straight. \$3,900. Dayton, OR. 503-437-2299



**HutchMaster 14' off-set wheel disc, new 26" heavy blades, new bearings, complete rebuild, \$12,900.** Bend, OR. 541-548-7185 mtcsales.net



**Kuhn Manure spreader: Pro Twin Slinger 8114, \$12,000.** Chehalis, WA. 360-520-5494



**John Deere 7720 Titan II, barn stored. Field ready, \$8500 OBO.** Hillsboro, OR. 503-939-4144

**923 Farm Equipment**



**TONS OF USED FARM WHEELS**  
AG WEST TIRE FACTORY  
Rickreall  
503-623-9171 ~ Mike

**183289-1**

**WESTERN TRAILERS**  
BOISE, IDAHO  
[WWW.WESTERNTRAILER.COM](http://WWW.WESTERNTRAILER.COM)  
ALL TRAILERS IN STOCK & READY FOR DELIVERY!



**1993 48' Fruehauf Rolltop \$7,800**



**2015 49'6" Western Express Floor Airride, Aluminum Wheels, Air Scales \$52,750**



**(2) 2006 53' Western Elite, Drop Deck, Sliding Rear Axle, Air Ride, Air Scales \$16,900 each**



**2008 48' Western Express Floor Tandem Slide, Airride \$22,000**  
**888.344.2539** Great Dane

**923 Farm Equipment**

**Field Disc:** 12ft, \$8000. OBO. Cloverdale, OR. 503-812-6360

**Shop Built Mulch spreader, \$14,000.** John Deere 5.5ft 3 point disc, \$550. John Deere RM 4 row cultivator, \$3000. Saint Paul, OR. 503-932-8871



**John Deere 9600 Combine:** engine hours: 6198; separator hours 4823. MacDon Swath Master double belt pickup, \$20,000. Independence, OR. 503-932-2287

**RETIRING:**

**ACE Groundhog - 14' width, \$5,000.** John Deere VT2623 vertical tillage soil management system- 26' width, very low acres, \$38,000. **Sterling Packer- 28' width, 18ft center section, usable without wings, low acres, \$10,000.** Connell, WA. Call/ text 509-282-2355



**1996 Willmar 765 Sprayer.** Good condition, low hours, \$38,500. Aurora, OR. 503-754-3679

**923 Farm Equipment**

**Ask about our Rental/Purchase/Consignment Program.**  
It includes 100 hrs of use per month.  
Free delivery to the Treasure Valley.

**Combines/Harvesters**

2013 JD 7780 Kernel Processor, 3707 hrs..... \$99,000  
2013 JD 5670, 1680 hrs..... \$89,000  
2012 JD 5690 Combine 1893 hrs ..... \$95,000

**Tractors**

2016 JD 7210R MFWD, IVT, 2400 hrs..... \$110,000  
2015 JD 6175R 480/85/46 tires 3200 hrs..... \$85,000  
2015 JD 7250R MFWD, PST ACS 1520 hrs. \$129,000  
2013 JD 6210R IVT, NR 520/85R46 4300 hrs. \$80,000  
2013 JD 7280R MFWD, IVT 4900 hrs..... \$89,000  
2012 JD 7280R IVT 5200 hrs ..... \$75,000  
2013 JD 8360R IVT, ILS, 3000 hrs ..... \$139,000  
2016 JD 8270R Wide Tires Avail., 2200 hrs. \$149,500  
2015 JD 8245R PG Warr., Exc. Cond., 7450 hrs... \$79,000  
2013 JD 7200R Rear PTO, Duals, 3200 hrs .... \$79,000  
2017 JD 9470RT 470 hp, 4,643 hrs ..... \$119,000  
2016 JD 7210R IVT 320/90/54 duals, 3,127 hrs. \$89,500  
2014 JD 9360R 3 pt, 6,855 hrs ..... \$85,000  
2017 JD 8345R Ext. Warr., 3,550 hrs..... \$149,000  
2017 JD 8345RT Ext. Warr., 3,557 hrs..... \$149,000  
2013 JD 6150R 20 spd., 4,500 hrs ..... \$69,000  
1998 JD 8400 Clean, Runs Good ..... \$32,000  
JD 8420T Good Cond., 11,147 hrs ..... \$35,000  
2002 SUNFLOWER 8781 Grain Cart..... \$15,000

**Ray Brothers Equipment**  
(208) 880-6344 • Call or Text Chris  
Ironsides, OR • Financing Available!  
[www.ray-brothers.com](http://www.ray-brothers.com)  
Email for more info  
CHRISRAY@RAYBROTHERS.NET

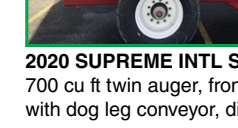
**New Address:** 1121 Garber St, Caldwell, ID  
**NW Mixer Feeders** 208 459-2750  
Feeding Cows Without The BULL!



**2020 SUPREME INTL SEG7T** 700 cu ft twin auger, front center door with dog leg conveyor, direct drive



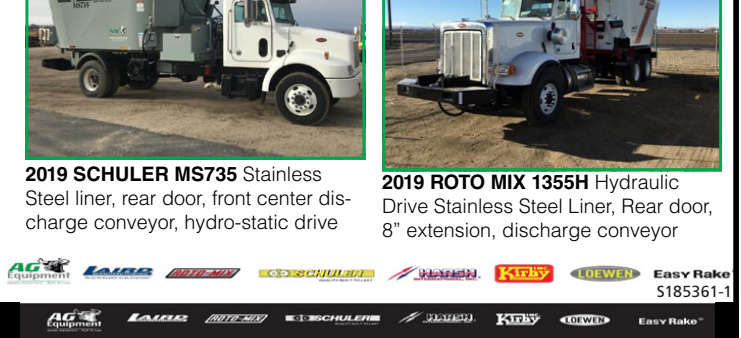
**2020 LAIRD VR1600 Triple Auger Mixer.** Two speed auto shift transmission, 4 discharge doors



**2019 SCHULER MS735 Stainless Steel liner, rear door, front center discharge conveyor, hydro-static drive**



**2019 ROTO MIX 1355H Hydraulic Drive Stainless Steel Liner. Rear door, 8" extension, discharge conveyor**



**D&S TIRES, INC**  
26884 Pearl Rd., Parma, ID 83660 • (208) 635-0700

**GO GREEN - SAVE THOUSANDS OF \$\$\$**  
LIKE OUR MANY SATISFIED CUSTOMERS!!**RELOG YOUR TRACK & WHEELS. PULL THEM OFF EARLY & SAVE YOUR BELT.**

**STOP!**  
Don't Throw Away Perfectly Good Track Because It's Missing Guide Blocks. Don't Waste Money! We Can Repair Your Guide Blocks for Much Cheaper Than New.  
**CALL TO GET YOUR GUIDE BLOCKS & TRACK REPAIRED TODAY!**

**EXCHANGE DRIVES, IDLERS AND MIDROLLERS**

**STEEL BELTED RADIAL RETREAD IRRIGATION TIRES ON HAND!**

**D&S TIRES INC.**  
Celebrating Our 49<sup>th</sup> Year In The Tire Business 1971-2020

62884 Pearl Road Parma, ID (208) 635-0700 (local numbers)

661 South Lincoln St. West Point, NE (402) 372-5572

620 North 33rd Street Richmond, IN (765) 965-5251

For More Information Ask For Marlan For More Information Ask For Tammy

**IMPROVE SOIL HEALTH, INCREASE YIELDS AND IMPROVE QUALITY... WITHOUT SPENDING MORE PER ACRE!!**

**Best Natural Fertilizer On Earth**  
"Chicken Soup for the Soil" improves your soil by feeding the microbes and supplying all the nutrients most fertilizers neglect."

**TOXIN FREE**  
FARMS HEMP PASTURES  
No Added Chemicals Less Bug Infestation  
CITRUS BETTER TASTE RANCH  
Stronger, Healthier Plants  
All Natural APPLS TOMATOES  
More Nutrition

No Animal Byproducts  
GMO FREE  
Non-Leaching

**Dr. Jim Z**

**64oz Jug 29.95\***  
+ Free Shipping!!

\*Makes up to 128 gallons with 1 tablespoon per gallon.  
**\*COMMERCIAL QUANTITIES ALSO AVAILABLE.**  
**208-602-2844 • www.DrJimZ.com**

**AGCO PLUS SMART REWARDS**

**WE'RE HERE FOR YOU. OFFER EXTENDED**  
**180 DAYS**  
**NO Payments. NO Interest.<sup>1</sup>**

Offer is valid on qualifying AGCO Parts and Service transactions<sup>2</sup> greater than \$1,000 financed through your AGCO Plus<sup>®</sup> account from **Now - June 30, 2020.<sup>3</sup>**

**Remember to Enroll in SMART REWARDS and Start Receiving**

**2% Cash Back<sup>4</sup>**  
in Comeback Cash<sup>5</sup> on AGCO Parts purchased with AGCO Plus.  
Enroll now at [AGCOPlusSmartRewards.com](http://AGCOPlusSmartRewards.com)

You now have smarter financing and purchasing options with AGCO Plus and Smart Rewards. AGCO Plus provides you the financial solutions, support, and flexibility you need. Then enjoy "FREE CASH" with Smart Rewards and get 2% cash back to use on your future purchases of AGCO Parts.

**AGRI-SERVICE**  
Together, we drive agriculture FORWARD  
800-260-3599 // [www.agri-service.com](http://www.agri-service.com)

**AGCO** Your Agriculture Company  
**AGCO FINANCE** **AGCO PARTS** **AGCO SERVICE**

<sup>1</sup> Interest will accrue after the interest-free period ends. <sup>2</sup> Qualifying transactions must include certain amounts of AGCO Parts and/or Service as determined by AGCO Finance LLC & AGCO Corporation in their sole discretion. <sup>3</sup> Offer only valid at participating AGCO dealerships. AGCO Finance LLC and/or AGCO Corporation reserve the right to change or rescind this offer at any time for any reason. <sup>4</sup> 2% cash back is earned at every \$2,500 in AGCO Parts purchased through AGCO Plus. <sup>5</sup> Cash back is in the form of a Comeback Cash Certificate and is only valid at AGCO Parts dealers. ©2020 AGCO Corporation. AGCO Parts is a worldwide brand of AGCO Corporation. AGCO and AGCO Parts are trademarks of AGCO. All rights reserved.