

899 Heavy & Indust. Eq.



**CAT Excavator 345B:** 5' bucket and muck bucket, thumb, 36" tracks, 13,700 hours, Ready to work, \$39,000. Seaside, OR. 503-440-4925

**CEC Screenit:** 5x12 screen, \$50,000. Pilot Rock, OR. 541-969-8645

"I get great results with Capital Press...and I have for over 20 years." Mark, Pro Truck  
Call 1-800-882-6789 to advertise.

"I had calls from New York, Minnesota, Idaho & Texas before the paper came out Friday! People are obviously using your website!"  
Mickelsen Dairy, Inc. Winlock, WA

CLASSIFIED ADS PLACED ONLINE GO TO THE WEBSITE WITHIN 24 HOURS. (on approval)  
DON'T WAIT! PLACE YOUR AD NOW!

899 Heavy & Indust. Eq.

**2000 Case 460 Trencher,** 1625 hours, \$5000. Connell, WA. Call/ text 509-282-2355



For SALE or RENT: Case CX130: 2 bucket, quick change, thumb, 10,000 hours, \$39,500. Call Pepe: 503-544-3232; Call Pat: 503-407-9062



1998 CASE 570L XT SKIP LOADER: box scraper, 4x4. Open ROP's canopy, 5044 hours. Asking \$19,950. Sandy, OR. Call Pepe: 503-544-3232; Call Pat: 503-407-9062

**REPLACEMENT DECAL SETS**  
Construction, Forestry & Ag Equipment. Fast, Knowledgeable, Reliable Service. 215-536-5339 email: info@CustomServicesCompany.com  
Thousands of sets, Old & New, in our digital inventory. [www.QuipCal.com](http://www.QuipCal.com)



**D-6 H U-dozer** with tilt and ripper, near new engine and hydraulic pump, \$79,500. Salem, OR. 503-362-3055



Kobelco SK45-SR-2: 2 Buckets, Blade, Wedge, Quick Coupler, Thumb 3000 hours. Asking \$23,000. Sandy, OR. Call Pepe: 503-544-3232; Call Pat: 503-407-9062



2010 Cat 307d, 3500 hours, 2 buckets, blades, \$42,000. 2016 John Deere 85G excavator, hydraulic thumb, \$75,000. Silverton, OR. 503-932-0766



For SALE or RENT: CAT D5H; 6 way blade ripper, powershift, \$39,500. Sandy, OR. Call Pepe: 503-544-3232; Call Pat: 503-407-9062

**CASE INDUSTRIAL PARTS**  
We sell genuine, after market, and used CASE parts at discount prices nationwide. Call For Free Catalog.

**CENTRAL EQUIPMENT**  
AFTER MARKET & USED PARTS, Medford, OR (888) 593-8749

**American Tractor**  
Our Toll Free # 888-499-8980  
Call Cameron Noble or Eric Hunt  
CENTRAL POINT, OR

899 Heavy & Indust. Eq.



CAT CVP75 Hoe Pack for excavator, low hours, \$7500. Sunnyside, WA. Call/ text 509-840-0044

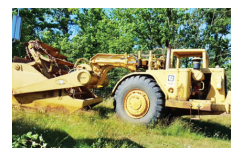


For SALE or RENT: Kawasaki Z50 IV: 1-1/2 yard articulated wheel loader, 5600 hours, 90% rubber, \$24,500. Sandy, OR. Call Pepe: 503-544-3232; Call Pat: 503-407-9062

902 Farm Equip. Parts

899 Heavy & Indust. Eq.

**Terex Dozer 82-30,** serial #57460. Runs good. Needs some under carriage work. Includes 2 new sprockets, \$10,000 OBO. Pics available. Hines, OR. 541-589-0558



**CAT 623-B:** Self-loading scraper, good condition, Reduced \$29,500. Salem, OR. 503-362-3055



2017 Deere 544K-II 1680 hours, quick attach scraper, good condition, real nice low hour machine. Ready to work. \$139,000. Cove, OR. 541-910-8024

902 Farm Equip. Parts

905 Antique Farm Eq. & Parts

Farmall 450 Excellent condition. Recent paint, \$2500. (2) Farmall H Tractors. Poor condition. One Farmall 300, poor condition. One Oliver 8355, runs. Make offer. 10ft John Deere Disc, \$200. Toppenish, WA. 509-854-1744



**Place your line ad today!**

**CALL BY 3PM MON - FRI AND GET YOUR LINE AD ONLINE IN 24 HOURS!** (On approval)  
Your line ad will also run in the next available print edition of Capital Press.  
Capital Press 800-882-6789 CapitalPress.com

907 Nursery Equip. & Supplies

907 Nursery Equip. & Supplies



907 Nursery Equip. & Supplies

907 Nursery Equip. & Supplies

## Toilet Trailers

Meets OSHA field sanitation standards!

- New side door entrance step
- Shorter tongue for easy moving
- 43 gallon stainless fresh-water tank
- 24" stainless steel sink

- RV style dump flush valve
- Auto shut-off sink faucet
- New outside door lock
- Optional eye-wash, shower & hot water heater

**GK MACHINE, INC. 503-678-5525**  
[www.GKToiletTrailers.com](http://www.GKToiletTrailers.com)

**CLASSIFIEDS SELL!**  
Advertise today.  
Call 1-800-882-6789

## Don't Miss Another Issue of Capital Press!

The latest agricultural and natural resources news.

**ANYTIME ANYWHERE**

- 1 year \$55
- 2 years \$100
- EZ Pay \$4/month

**SUBSCRIBE TODAY!**

Capital Press 800-882-6789 CapitalPress.com

1-800-781-3214 CapitalPress.com

**NEW & USED OLIVER & CLETRAC**  
Crawler Parts Are Our Specialty  
**ZIMMERMAN OLIVER-CLETRAC**  
1450 Diamond Station Rd. • Ephrata, PA 17522  
717-738-2573 Fax 717-733-3529  
[www.olivercletrac.com](http://www.olivercletrac.com)

## Nyssa Tractor & Implement

Our yard has 5 miles of road, the rest is farm machinery & parts.  
[www.nyssatractor.com](http://www.nyssatractor.com)  
Toll Free (833) 372-4020  
Nyssa, OR

## BIG TRACTOR PARTS, INC.

~ GEARED FOR THE FUTURE ~

### STEIGER TRACTOR SPECIALIST

- 1. We are your source for new & used Steiger drivetrain parts Series 1-9300 Series.
- 2. We rebuild Spicer manual transmissions, Fugi power shift transmissions, dropboxes & axle with ONE YEAR WARRANTY!
- 3. We now rebuild computer control boxes for Steiger tractors 1982-1999.

**800-982-1769**  
[www.bigtractorparts.com](http://www.bigtractorparts.com)

## NEW, USED, AND REMAN PARTS

TOLL FREE: 1-877-928-1646  
32427 OLD HWY 34, TANGENT, OR 97389

Combine Parts, Rebuild Kits, Reman Engines for Case/IH, John Deere, and Ford, Seats w/Air Suspension \$1,025, JD 4010, 4020 Clutch Kits \$715

**Farmland Tractor Supply**  
Parts@Farmlandtractor.com

## GK Greenhouses

are pre-engineered for fast and easy assembly!

**Covers:** Shade-cloth, polyethylene film, polycarbonate sheets and ground cover

**Accessories:** Shutters, doors, heaters, fans, wire lock, wiggle wire and more

10590 Donald Road NE Donald Oregon 97020 503-678-5525  
[www.GKGreenhouse.com](http://www.GKGreenhouse.com)

**Capital Press**  
800-882-6789  
CapitalPress.com

## R & G MACHINING AND ENGINE PARTS

COMPLETE DIESEL MACHINE SHOP AND TRUCK REPAIR  
MULINO, OREGON • SHOP: 503-829-6038 • NATIONWIDE: 1-800-823-6038  
We Absolutely, Positively Have The Best Remanufactured Engines Available Anywhere!  
Huge Inventory • Expert Technical Assistance

ENGINES BY R&G MACHINING		REBUILT DIESEL L/B ENGINES	
FORD	CHRYSLER & JEEP	CUMMINS	PERKINS & ISUZU
300.....\$1,595	4.0-4.2.....\$1,895	3.9-4BT.....\$3,395	Starting at.....\$5,995
4.6-5.4.....\$2,895	4.0 Stroker 4.7.....\$3,895	5.9 '88-'02.....\$3,695	MITSUBISHI & NISSAN
302-351-400.....\$1,895	5.7 Hemi.....\$3,695	5.9 '03 & up.....\$3,895	Starting at.....\$5,995
415-V10.....\$3,295	5.7 Hemi.....\$3,695	6.7 C/R.....\$4,195	YANMAR & KUBOTA
460 '72-'92.....\$1,899	6.1 Hemi.....\$4,695	Starting at.....\$4,495	BOBCAT & PEUGEOT
	318-360.....\$1,899	6.0 P/S.....\$4,595	Starting at.....\$3,995
	488 V10.....\$3,395	6.4 P/S.....\$5,295	6.4 P/S.....\$5,295
		6.7 P/S.....\$6,395	6.7 P/S.....\$6,395
		7.3 P/S.....\$3,895	7.3 P/S.....\$3,895
			CASE & IH
			Starting at.....\$3,995
			HINO & IVECO
			Starting at.....\$5,995
			KOBELCO, KOMATSU, HITACHI
			Starting at.....\$5,995
			CATERPILLAR
			Starting at.....\$5,995

Call on other gas or diesel engines. We are a major rebuild on all diesel brands. All work done in house!  
**IN BUSINESS SINCE 1975.**

**OVER 250 ENGINES & 450 CYLINDER HEADS IN STOCK!**  
We have a complete line of import diesels and obsolete diesels for your mini excavators or skidsteers. We work and repair all brands!

**Need Engine Parts, Gas or Diesel! - Check it out:**  
[www.ebay.com/str/grumpysperformancecenter](http://www.ebay.com/str/grumpysperformancecenter)

## OREGON VALLEY GREENHOUSES

Greenhouse Manufacturing & Supplies

SHADE CLOTH SEASON IS HERE AND WE'VE GOT YOU COVERED

- \* WIDTHS FROM 12' TO 56' WIDE
- \* PERCENT BLOCKAGE FROM 30 TO 80%

JD EXHAUST FANS	SHUTTERS
20" \$275.00	24" LD \$191.50
24" \$350.00	30" LD \$207.00
36" \$1100.00	36" HD \$619.00
42" \$1256.00	42" HD \$729.00
50" \$1314.00	48" HD \$799.00

Also Offering: Poly Film, Poly Carbonate, Wire Lock, Side Roll-ups, Ground Cover, Code Structures

starting at 10 cents per square foot  
prices good thru 5/31/20

**BUILDERS OF HEAVY DUTY GREENHOUSES**  
20357 HWY 99E \* AURORA, OR 97002 \* 503-678-2700  
[www.ovg.com](http://www.ovg.com) \* [info@ovg.com](mailto:info@ovg.com)