

923 Farm Equipment | 923 Farm Equipment

923 Farm Equipment

923 Farm Equipment

923 Farm Equipment

923 Farm Equipment


923 Farm Equipment

923 Farm Equipment

Containers For Sale

20' and 40'

REFRIGERATED CONTAINERS AVAILABLE



Portland Container

9449 N. Burgard Way, Portland OR
Call Alan Conner (503) 286-1767
or 1-800-788-5159
boxsales@pdxcontainer.com
(Credit Cards Accepted) 5181699-1

2011 MacDon D60D swather header, 25'. Good condition, \$29,000. Moses Lake, WA. 509-750-7918

New Holland 1431 Disc Mower, 2005/2006, \$8000. Turner, OR. 503-932-7130



John Deere 8440: 50% rubber, 3 hydraulic outlets, 3 point hitch, \$12,500. McArthur, CA. 530-949-0643

John Deere 4200 4 bottom rollover plow, \$1250. (2) John Deere LLA drills, 6" & 7" spacing with grass boxes, \$1500 each. Sprague, WA. 509-257-2413



TR 98 New Holland Combine. New 30.5-32; 14-9-24 80%. 25ft header, 971 model. plastic tines plus cart. Good Condition, \$30,000. McArthur, CA. 530-949-0643



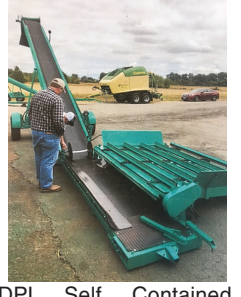
Handlair 680 pneumatic seed blower, barely used, with some associated piping, \$40,000. Salem, OR. 503-838-3779, 503-428-6577



Kelli Disc 225 12ft offset Excellent Condition. \$6,000. Southeastern OR. 541-219-0741

RETIRING:
ACE Groundhog - 14' width, \$5,500. John Deere VT2623 vertical tillage soil management system- 26' width, very low acres, \$40,000. Sterling Packer- 28' width, low acres, \$11,000. Connell, WA. Call/ text 509-282-2355

John Deere 10' roller harrow, \$1500. International 140 4 bottom rollover plow, 18" bottoms, field ready, \$2500. International 314 3 bottom rollover plow, \$500. 7 shank chisel plow, adjustable depth wheels, \$500. Grandview, WA. 509-830-1214



DPI Self Contained, towable field conveyor. 22" wide, 10' discharge height. Variable speed, hydraulic driven belts. Honda Gas Motor. Work light, highway towable with trailer light. Detachable bulk dump cross conveyor. Detachable wings for both cross and main conveyors. Drive over for belly dump. Low hours. Like new, \$22,000. Gervais, OR. Contact Brent 503-580-2286

CASE Bean Planter Model 1210: rigid frame, 12 row. Chains, sprockets, gears and metering wheels like new. Very little use. CASE Early Riser Monitor III. All wiring included. Boxes of new extra parts. Full set of front coulters for no-till seeding. Field ready. Like new condition at 1/2 the price of new, \$35,000 OBO. Moses Lake, WA. 509-750-7598



2007 900 Claas Speedstar Greeneye Chopper with 4x4. Auto lube. Auto sharpen, auto shear bar adjustment. 20 knife drum. Mad jag shear bar. Mad jag hard servicing throughout. Corn processor; grass chute. Some spare parts. Very Well Maintained. Approximately 3500 hours on brand new Claas engine. Includes 2012 380HD hay pickup. Good running, hard working chopper, \$75,000. Royal City, WA. Call 509-989-0404 for more info.



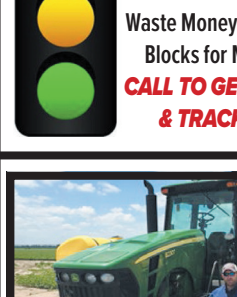
Brillion 25ft Pulvi-mulcher, Solid rollers, s-tines, \$30,000. Hillsboro, OR. 503-939-3604



John Deere 9600 Combine: engine hours: 6198; separator hours 4823. MacDon Swath Master double belt pickup, \$20,000. Independence, OR. 503-932-2287



John Deere 3970 Chopper with grass head. 2 corn heads, long tongue, tall spout, \$4,500. Wilsonville, OR. Leave Message 503-625-0646



John Deere 535 MOWER CONDITIONER, \$12,500. Lely 240B disc mower, \$4500. Gehl 120 mixer mill, \$3000. Southwest WA. 360-751-3353

John Deere 9600 Combine: engine hours: 6198; separator hours 4823. MacDon Swath Master double belt pickup, \$20,000. Independence, OR. 503-932-2287



John Deere 3970 Chopper with grass head. 2 corn heads, long tongue, tall spout, \$4,500. Wilsonville, OR. Leave Message 503-625-0646



John Deere 535 MOWER CONDITIONER, \$12,500. Lely 240B disc mower, \$4500. Gehl 120 mixer mill, \$3000. Southwest WA. 360-751-3353

DISTILLERY EQUIPMENT: Excellent condition. •LIKE NEW- 2006 500 HP Cleaver Brooks boiler, model CB1-200-500-150, gas/ oil fired, emission controls, shedded. You load and haul, \$150,000 OBO. •1964 250 HP Pawnee (Superior) gas/ oil fired boiler, \$10,000. •(5) NEW 2015 New House pyramid separators, automated. •Several New House separators and condensers •2012 Parma 15 HP lift pump. •2 New House re-distills. •Toledo Scale. •Miscellaneous distillery equipment: aluminum piping, hookups, etc. Othello, WA. 509-989-6070



Harsh 502H Mixer, 4 auger, stainless steel liner, scales. Excellent shape. Mixes hay bales. On International 5370 truck, Allison Auto, DT 466 diesel, \$15,000 Wilsonville, OR. Leave Message 503-625-0646

Ask about our Rental/Purchase/Consignment Program.
It includes 100 hrs of use per month. Free delivery to the Treasure Valley.

Combines/Harvesters	
2013 JD 7780 Kernel Processor, 3707 hrs.....	\$99,000
2013 JD 5670, 1680 hrs.....	\$89,000
2012 JD 5690 Combine 1893 hrs.....	\$95,000
Tractors	
2016 JD 7210R MFWD, IVT, 2400 hrs.....	\$110,000
2015 JD 6175R 480/85r46 tires 3200 hrs.....	\$85,000
2015 JD 7250R MFWD, PST ACS 1520 hrs.....	\$129,000
2013 JD 6210R IVT, NR 520/85R46 4300 hrs..	\$80,000
2013 JD 7280R MFWD, IVT 4900 hrs.....	\$89,000
2012 JD 7280R IVT 5200 hrs.....	\$75,000
2013 JD 8360R IVT, ILS, 3000 hrs.....	\$139,000
2016 JD 8270R Wide Tires Avail., 2200 hrs.....	\$149,500
2015 JD 8245R PG Warr., Exc. Cond., 7450 hrs...	\$79,000
2013 JD 7200R Rear PTO, Duals, 3200 hrs....	\$79,000
2017 JD 9470RT 470 hp, 4,643 hrs.....	\$119,000
2016 JD 7210R IVT 320/90r54 duals, 3,127 hrs..	\$89,500
2014 JD 9360R 3 pt, 6,855 hrs.....	\$85,000
2017 JD 8345R Ext. Warr., 3,550 hrs.....	\$149,000
2017 JD 8345RT Ext. Warr., 3,557 hrs.....	\$149,000
2013 JD 6150R 20 spd., 4,500 hrs.....	\$69,000
1998 JD 8400 Clean, Runs Good.....	\$32,000
JD 8420T Good Cond., 11,147 hrs.....	\$35,000
2002 SUNFLOWER 8781 Grain Cart.....	\$15,000

Ray Brothers Equipment
(208) 880-6344 • Call or Text Chris Ironside, OR • Financing Available!
www.ray-brothers.com
Email for more info
CHRISRAY@RAYBROTHERS.NET



Hydra-Pull
• 10 MODELS/SIZES • RENTAL OPTIONS • MADE IN USA
• MANURE & COMPOST • HEAVY DUTY DESIGN



BARRTECH
Compost / Organics Recycling
AUTHORIZED DEALER OF PIK RITE SPREADERS.
509-590-0437 • www.Barr-Tech.net • Sprague, WA

PASTURES, FARMS, HEMP & NUTS

- Improve soil without spending more
- Stimulates life in soil & supplies all the nutrients most fertilizers neglect
- Allows plants to reach maximum genetic potential
- GMO free, toxin free, no added chemicals
- No Animal Byproducts



ORDERS ARE BACKING UP!

Dr. Jim's
Bulk quantities available!
208-602-2844 | www.DrJimZ.com



WWW.WESTERNTRAILER.COM
ALL TRAILERS IN STOCK & READY FOR DELIVERY!

2015 49'6" Western Express Floor Airride, Aluminum Wheels, Air Scales
\$52,750


2000 48' Western Elite Supervan Hardtop W/S Airride
\$7,950

USED 2019 53' Western Express Floor Quad, Aluminum Wheels, Airride
PRICE ON REQUEST

(2) 2006 53' Western Elite Drop Deck, Sliding Rear Axle, Air Ride, Air Scales
\$16,900 each

888.344.2539
Great Dane


New Address: 1121 Garber ST, Caldwell, ID
www.nwmixerfeeders.com
208 459-2750
Feeding Cows Without the BULL!



bb88qh
2020 SUPREME INTL SEG5T 500 cu ft twin auger, front center door with dog leg conveyor, direct drive



bd73ic
2020 AG EQUIPMENT INC MSP650 Horizontal Manure Spreader Installed on 2010 Freightliner Truck



bd73id



bc98hm
2018 PEECON 1450 cuft. Full Stainless Steel wall liners, four side doors, transmission, augers 90%.

AGCO EQUIPMENT | LAUREL | BROTHERS | SCHULZERS | KIRBY | LEWIS | Easy Rake 5182812-1

SPRING SALE!



Case IH 165 5-bottom on land plow ... **\$8,500**



John Deere 1710 12-row 30" Planter, folding bar, hydraulic markers.....**\$14,500**



MAXXUM 115, 5800 hours, 1760 Leader, 3 remotes.....**\$40,000**



MF 1085, 5500 original hours, Perkins diesel ...**\$8,500**



JD 3010, 2 remotes.....**\$5,500**

JD 450 13', Dbl. Disc, 6" sp, w/Seeder **\$11,000**

JD B 10', Dbl. Disc.....**\$1,250**

JD 8200 10', 6" sp. Fresh Paint**\$4,500**

2011 HARLOW 6500 HD FORKLIFT, 1720 Hours, Tier 3 Cummins**\$45,000**

Nyssa Tractor & Implement

Celebrating 29 years in the agricultural machinery business.

Our yard has 5 miles of road, with machinery on both sides. FREE TOURS GIVEN DAILY. LOCATED NYSSA, OR
Call Toll Free: (833)372-4020
www.nyssatractor.com
sales@nyssatractor.com

D&S TIRES, INC

26884 Pearl Rd., Parma, ID 83660 • (208) 635-0700

GO GREEN - SAVE THOUSANDS OF \$\$\$
LIKE OUR MANY SATISFIED CUSTOMERS!! RELAY YOUR TRACK & WHEELS. PULL THEM OFF EARLY & SAVE YOUR BELT.

STOP!
Don't Throw Away Perfectly Good Track Because It's Missing Guide Blocks. Don't Waste Money! We Can Repair Your Guide Blocks for Much Cheaper Than New.
CALL TO GET YOUR GUIDE BLOCKS & TRACK REPAIRED TODAY!

EXCHANGE DRIVES, IDLERS AND MIDROLLERS

STEEL BELTED RADIAL RETREAD IRRIGATION TIRES ON HAND!

D&S TIRES INC.
Celebrating Our 49th Year In The Tire Business 1971-2020

26884 Pearl Road Parma, ID (208) 635-0700 (Dial entire number)
661 South Lincoln St. West Point, NE (402) 372-5572
620 North 23rd Street Richmond, IN (765) 965-5251

For More Information Ask For Marian
For More Information Ask For Tammy



SMART REWARDS

LIMITED TIME OFFER
90 DAYS
NO Payments. NO Interest.¹

Offer is valid on qualifying AGCO Parts and Service transactions² greater than \$1,000 financed through your AGCO Plus[®] account from
April 1 – June 30, 2020.³

Remember to Enroll in **SMART REWARDS** and Start Receiving

2% Cash Back³
in Comeback Cash⁵ on AGCO Parts purchased with AGCO Plus.
Enroll now at AGCOPlusSmartRewards.com

You now have smarter financing and purchasing options with AGCO Plus and Smart Rewards. AGCO Plus provides you the financial solutions, support, and flexibility you need. Then enjoy "FREE CASH" with Smart Rewards and get 2% cash back to use on your future purchases of AGCO Parts.

AGRI-SERVICE
Together, we drive agriculture FORWARD
800-260-3599 // www.agri-service.com

AGCO
Your Agriculture Company

AGCO FINANCE | AGCO PARTS | AGCO SERVICE

¹ Interest will accrue after the interest free period ends. ² Qualifying transactions must include certain amounts of AGCO Parts and/or Service as determined by AGCO Finance LLC & AGCO Corporation in their sole discretion. ³ Offer only valid at participating AGCO dealerships. AGCO Finance LLC and/or AGCO Corporation reserve the right to change or rescind this offer at any time for any reason. ⁴ 2% cash back is earned at every \$2,500 in AGCO Parts purchased through AGCO Plus. ⁵ Cash back is in the form of a Comeback Cash Certificate and is only valid at AGCO Parts dealers. ©2020 AGCO Corporation. AGCO Parts is a worldwide brand of AGCO Corporation. AGCO and AGCO Parts are trademarks of AGCO. All rights reserved.