

828 Misc For Sale

Consew 220R industrial sewing machine, table, light. Excellent condition, like new, \$1850. Hailey, ID. 208-720-2404

Plastic Tote Boxes 48"x40"x32"H. \$60 each or quantity discount. Some damage. Delivery Available. Cornelius, OR. 503-341-4289

MINT COMPOST!

Large quantity of Mint Compost. \$10/ yard. You haul. 2 yard minimum. \$15/ yard delivered plus \$1.00 per mile, 5 yard minimum. Will negotiate price for large orders.

835 Hemp

MINT COMPOST!

Large quantity of Mint Compost. \$10/ yard. You haul. 2 yard minimum. \$15/ yard delivered plus \$1.00 per mile, 5 yard minimum. Will negotiate price for large orders.

863 Refrigeration Equipment



Freezer and Freezer/Cooler Walk in units: Polar King, solid built, fully stand alone, enclosed units. Can be set outside.

Commercial REFRIGERATION & HVAC

Serving OR/ SW WA- 24 hrs Northwest Mechanical Group 888-652-4540 NWMechanicalGroup.com

869 Livestock Equip. & Supplies

Livestock Panels: 16' (6) rail, (3) brace, \$117 each. 12' panels, (6) rail, (2) brace, \$88. Bow gates, all lengths and sizes.

BZ Welding hydraulic CALF TABLES, in stock!

NW Farm Supply, Hermiston, OR. 800-801-5650 or Mike 541-561-6047

Powder River cow chute, all steel. Very good shape \$2250. Sprague, WA. 509-257-2413



New IA 24' portable hay feeder with 8 hole wheels swing away tongue inner bunk with 35 outer station openings. Buy 2 or More For \$3,995 each.

872 Dairy Eq. & Supplies

Kiln Dried Shavings: Smaller truck loads now available. Hogfuel also available. Call for details. Forest Grove, OR. 503-849-0216

Polydome Calf Nursery: Hutches available for various climates. Western Polydome, Inc. Monroeville, WA. 800-822-5837

CLASSIFIED LINE ADS GET RESULTS! 1-800-882-6789 CapitalPress.com

NEW MANURE SPREADER

400 bu. • BUY OR RENT Call Scott at Barr-Tech Compost/Organics Recycling

875 Tanks & Storage

(2) 1500 gallon round plastic tanks, used for water only, \$1500/ both. Sprague, WA. 509-257-2413

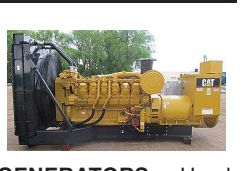
Water storage tanks: (6) 2500 gallons, \$1000 each. (2) 5000 gallons, \$2000 each. All in good condition. Eagle Point, OR. 541-821-3260



Vertical Storage Tanks: Custom built up to 25,000 gallons, U.L. 142 fuel, water and fertilizer storage. R.C.F. LLC, Middleton, ID. Call Andy 208-860-9256

FUEL TANKS: Used 5000 gallon UL2085, split 2500/2500 and 20k double walled tank. New 1000, 2000, 3000 and 5000 gallon double walled tanks.

878 Generators



GENERATORS: Used, low hour takeouts, 20kW to 2000kW, diesel, propane, & natural gas. Cooperstown, ND. We ship nationwide. 701-371-9526 or 701-367-4305



Caterpillar a500 KW Gen Set. 3412 CAT Diesel. 120-480 Volt. 1 and 3 phase. 719 ACTUAL HOURS. Complete with exhaust system, and day tank and transfer pump.

881 Shop Equip. & Tools

Mastercraft 10" Sliding Compound Miter Saw. New. \$200. Caldwell, ID. 208-284-1543

884 Well-Drilling Equip.

DRILLING EQUIPMENT: (18) 4-1/2x20 Drill stem 2-7/8 IF, 4"x6" stabilizer. (5") Tap with sub to 2-7/8 box, (8") Sky Tech casing lifter, (4-1/2"x4-1/2" box-pin 2' collar 8", (5") Roller cone bit, (8-3/4" med. Tricone bit 8" Tricone bit.

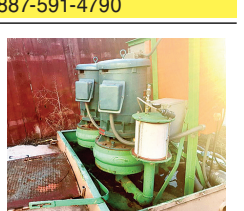
887 Irrigation Equip.

2014 Micro Rain Irrigation Sprinkler. Low hours, great condition, \$10,000. Castle Rock, WA. 360-749-4422

Used (2) Western 7" 1/4 mile wheel lines with self-levelers. Disassembled for hauling, \$3,500 each. (90+) assorted portable aluminum 30' main line joints: 4" hook & latch, 5", 6", and 8" ring lock available. Eltopia, WA. 509-528-7224



Used Diesel Irrigation Pump: John Deere 4045 80HP, 150 gallon tank, 400gpm at 150psi. Suction & Discharge fittings, steel discharge. Gooseneck, \$17,900. Lynden, WA. Contact WaterTec Inc. 887-591-4790



Dual 40-hp pump station, 480V, 3 phase, design point is 150' thd, 450gpm self priming vac, control panel, \$9,000 OBO. Homedale, ID. 208-989-8507

20 HP Berkley irrigation pump, high pressure, new pump casting, \$2495. (25) Rainbird #30 sprinklers, \$10 each. (3) Hydromatic sump pumps, \$75 each. Turner, OR. 503-769-6517

HOT! SAVINGS at Capital Press 1-800-882-6789 CapitalPress.com

887 Irrigation Equip.

(70) Used Pivots: Engines, pumps. Garden Valley, ID. Call Mike at 208-420-1480, or see www.pivotsplus.com

(8) used 1/4 mile wheel lines. Various wheel heights. Movers in great condition, \$4,250 each. Brogan, OR. 208-409-8524

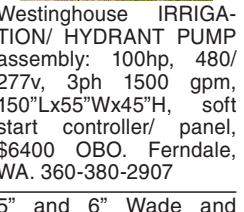
200 Solid Set Hand Lines: End Risers, Hook and latch. \$40/ pipe. Brogan, OR. 208-409-8524



IRRIGATION EQUIPMENT: (14) Used 1/4 mile wheel lines, 5hp Gheen single frame field king 6', 5hp Gheen dual frame ranch king 5', 8hp Travis single frame 5', 4" & 5" pipe, \$6000 each. Various mover frames also available. Dixon, CA. 800-734-8859

(20) 1/4 mile Wheel Lines with movers. 4" and 5", 48" to 72" wheel diameter, Wade and Gheen. Disassembled and ready to load. \$4,000+ each. Salem, OR. 503-838-3779

WANTED to buy or lease in Marion County, Oregon. Surface Water Right from the Pudding River or a tributary thereof. Any acreage considered. 503-710-7579



Westinghouse IRRIGATION/ HYDRANT PUMP assembly: 100hp, 480/ 277v, 3ph 1500 gpm, 150"Lx55"Wx45"H, soft start controller/ panel, \$6400 OBO. Ferndale, WA. 360-380-2907

5" and 6" Wade and Pierce Main line. \$3/ foot. Dayton, OR. 503-209-5896

(33) 5x40 supply line. (35) 5x30 14 with valves, \$2/ ft. Cornelius, OR. 503-314-8018

Used Valley 600 circle, 7 stans, 6-5/8" pipe, newer select control panel, new pipe on corner, 1000 8' system, 174' corner, 82' overhang, \$17,000. Near Pasco, WA. 509-380-7171

(875) Nelson R2000 windfighter sprinkler heads on 2' risers, \$8 each. Wapato, WA. 509-848-2622

WANTED: irrigation main line, 5", 6" and 8" supply hydrants. Wade rain and/ or Ringlock. Salem, OR. or surrounding area. 503-437-4833

ERNST Irrigation • Electrical • Tractor. "We understand your water needs. Let our experienced staff assist you with all your water quality and quantity needs." PRODUCTS: T and C 1/2" - 6", Filtration, Valves, Sprinklers, Water Meters, Chemical Injection, Bandit Clamps, Aluminum Irrigation Fittings & Pipe 2" - 10", Wheelines & Wheeline Fittings, Hard Hose Travelers, Linears • Pivots, Water Pumps, Steel Pipe & Fittings 1/2" - 12", PVC Fittings & Pipe 1/2" - 18", Low Volume/Micro Irrigation Drip Hose 1/2" - 2", Angus Drag Hose 2 1/2" - 5" Suction & Discharge Hose. SERVICES: Design & Consultation • Pumps & Panels, including Variable Frequency Drives • Traveler Repair, all makes & models • Field Fabrication • Big Gun Rebuilding • Water Testing / Flow & Quality

20179 Main St., St. Paul, OR 97137 (503) 633-1111

887 Irrigation Equip.

Drip Tube: .26gph at 30" centers, 350 rolls. 500 rolls of drip tube 12" spaced emitters suitable for blueberries. \$75 per roll. Lafayette, OR. 503-437-4833

Pivots: All brands. No rust. Plus buried wire. Call Keizer, OR. Cell 503-881-3232

2000' used 8" ringlock supply line, 40' pipes in good shape, \$4.50/ foot. 1000' used 10" Wosco mainline with valves, in good shape, \$6.50/ foot. Prices negotiable. Hillsboro, OR. 503-260-5828

Trash Pump on Trailer. needs work to restore. Selling as is, \$800 Vancouver, WA 360-901-4750

Cadman 3750XL hard- nose sprinkler reel, \$16,500. Rickreall, OR. 503-838-3740, 503-383-6722

(1) 1/4 mile Wheel line Nice condition, \$3800 each. Madras, OR. 503-508-7511



(3) wheelines, 5" pipe, 7" wheels, 1/4 mile: (1) Wade Rain (everything new but the frame/ transmission, those were used 2 seasons), new Honda motor, \$14,000. (2) Lake lines, new Travis movers, \$8000 each. Several hundred rebuilt sprinkler heads. Queen Creek, AZ. 602-625-8378

Frost Protection H2 Pipe & Supply. Authorized Factory Dealer of Orchard-Rite® Wind Machines. 598 Baseline, Cornelius, OR. Office: 503-357-4217, info@hpspipe.com

Vyrsa Impact Sprinklers. High Quality Brass. 1/2" Part Circle \$15.60, 1/2" Full Circle \$11.70, 3/4" Part Circle \$25.74, 3/4" Full Circle \$14.88. Call For Bulk Pricing and FREE Brochure! WaterTec (360) 393-4923 www.watertecna.com Lynden, WA

893 Logging Equip.



Timbco 425B Feller-buncher bar saw, sn# AT4C-562-021395. OR. 541-701-7757

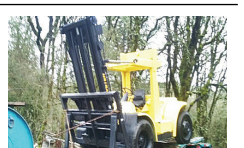
Komatsu Excavator: 98PC200-6, thumb, Quick Coupler, forestry guarding, 3900 hours, \$55,000. Creswell, OR. 541-912-7807

1996 EX200-5 Hitachi Excavator: thumb, excellent condition, all original, 7500 hours, \$35,000. Creswell, OR. 541-912-7807

896 Forklifts



2015 Hoist P330: 33K capacity, Fork positioners, side shift, 4407 hours, A.C. \$85,000. Gaston, OR. 503-789-3726. DELIVERED 50 Mile Radius.



1989 Hyster H200HS 9ft forks, side shift, hydraulic fork positioners, Perkins diesel, Monotrol, 182" upright. Nice \$25,000. DELIVERED within 50 mile radius of Gaston, OR. 503-789-3726

2 used forklifts, 1 needs motor, 1 needs hydraulic control parts, \$2500 each. Toppenish, WA. 509-945-2074



Eagle Picher Rough Terrain Forklift: 8,000 lb., side shift, diesel, Powershift, \$9500. Sandy, OR. Call Pepe: 503-544-3232; Call Pat: 503-407-9062



2003 Hyster H-120XM, REFURBISHED, rebuilt Perkins 1004 tier 2 engine, two speed transmission, new paint, tires, 8825 hours, \$11,000. McMinnville, OR. Call/ Text 503-550-7625 www.SpringHollowEquip.com

899 Heavy & Indust. Eq.

70' TRUCK SCALE, above ground, certified, electronic. Canby, OR. 503-803-1926



For RENT or SALE: CASE 1102PD 84in. drum drive vibratory roller. 2300 hours, \$19,500. Sandy, OR. Call Pepe: 503-544-3232; Call Pat: 503-407-9062



1991 Case 821 front end loader, 6735 hours, original owner, no leaks, 4 yard bucket, oil analyses and manuals. Excellent running condition, \$25,000. Portland, OR. ACI Contracting 503-799-0184

899 Heavy & Indust. Eq.



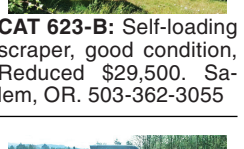
950 Cat loader, tires 70%, 4 machining tires, 3rd valve, gp bucket, \$16,500. MacDoeil, CA. 530-398-4010, 530-340-4899



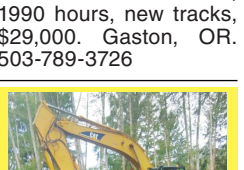
2010 Cat 307d, 3500 hours, 2 buckets, blades, \$42,000. 2016 John Deere 85G excavator, hydraulic thumb, \$75,000. Silverton, OR. 503-932-0766



2013 Bobcat T550, 1990 hours, new tracks, \$29,000. Gaston, OR. 503-789-3726



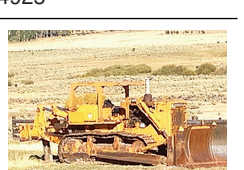
CAT 623-B: Self-loading scraper, good condition, Reduced \$29,500. Salem, OR. 503-362-3055



CAT Excavator 345B: 5' bucket and muck bucket, thumb, 36" tracks, 13,700 hours, Ready to work, \$49,000. Seaside, OR. 503-440-4925



Hitachi Zaxis Excavator: ARC, 3 buckets, thumb, blade, 3800 hours, excellent condition, \$39,000. Seaside, OR. (503)440-4925



1982 Komatsu 355-3 Dozer. New bearings, new pistons and rings. Liners, standard crank, new radiator, 15ft blade, 5ft ripper, 80% under-carriage, \$36,000 OBO. Klamath Falls, OR. 541-891-8617



D-6 H U-dozer with tilt and ripper, near new engine and hydraulic pump, \$79,500. Salem, OR. 503-362-3055

Complete Turn Key Concrete Batch Plant. Portable. Behind 10 yard dump truck. Silo, weigh hopper, generator, 2 cement trucks. \$75,000. Will help move and train. Creswell, OR. 541-912-7807

1996 EX200-5 Hitachi Excavator: thumb, excellent condition, all original, 7500 hours, \$35,000. Creswell, OR. 541-912-7807

Komatsu Excavator: 98PC200-6, thumb, Quick Coupler, forestry guarding, 3900 hours, \$55,000. Creswell, OR. 541-912-7807



907 Nursery Equip. & Supplies

899 Heavy & Indust. Eq.

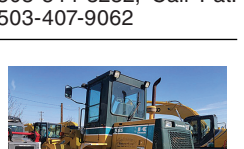
2000 Case 460 Trencher, 1625 hours, \$6000. Connel, WA. Call/ text 509-282-2355



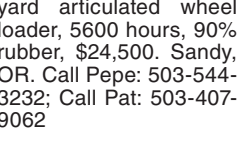
For RENT or SALE: John Deere 160-LC: hydraulic coupler with 2 buckets. Asking \$42,500. Call Pepe: 503-544-3232; Call Pat: 503-407-9062. Sandy, OR.



For SALE or RENT: Case CX130: 2 bucket, quick change, thumb, 10,000 hours, \$39,500. Call Pepe: 503-544-3232; Call Pat: 503-407-9062



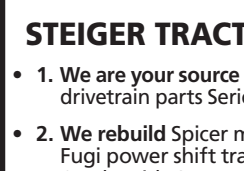
1998 CASE 570L XT SKIP LOADER: box scraper, 4x4. Open ROPs canopy, 5044 hours. Asking \$19,950. Sandy, OR. Call Pepe: 503-544-3232; Call Pat: 503-407-9062



For SALE or RENT: Kawasaki Z50 IV: 1-1/2 yard articulated wheel loader, 5600 hours, 90% rubber, \$24,500. Sandy, OR. Call Pepe: 503-544-3232; Call Pat: 503-407-9062

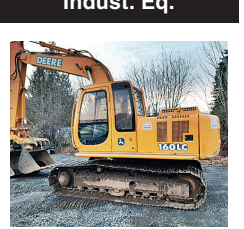


1955 Allis Chalmers WD-45 diesel: discs, 2 and 3 bottom plows, subsoiler, 6' Land Pride Brush Hog. Asking \$3000. Brush Prairie, WA. 360-903-1062, 360-496-0759



902 Farm Equip. Parts

899 Heavy & Indust. Eq.



For RENT or SALE: John Deere 160-LC: hydraulic coupler with 2 buckets. Asking \$42,500. Call Pepe: 503-544-3232; Call Pat: 503-407-9062. Sandy, OR.



Hitachi Ex300-3: thumb, wedge, quick change, Isuzu motor, 10,000 hours. Delivery Available, \$28,500. Sandy, OR. Call Pepe: 503-544-3232; Call Pat: 503-407-9062

CASE INDUSTRIAL PARTS. We sell genuine, after market, and used CASE parts at discount prices nationwide. Call For Free Catalog. CENTRAL EQUIPMENT AFTER MARKET & USED PARTS Medford, OR (888) 593-8749

905 Antique Farm Eq. & Parts

1955 Allis Chalmers WD-45 diesel: discs, 2 and 3 bottom plows, subsoiler, 6' Land Pride Brush Hog. Asking \$3000. Brush Prairie, WA. 360-903-1062, 360-496-0759



902 Farm Equip. Parts

Nyssa Tractor & Implement. Our yard has 5 miles of road, the rest is farm machinery & parts. www.nyssatractor.com Toll Free (833) 372-4020 Nyssa, OR

BIG TRACTOR PARTS, INC. ~ GEARED FOR THE FUTURE ~ STEIGER TRACTOR SPECIALIST. 1. We are your source for new & used Steiger drivetrain parts Series 1-9300 Series. 2. We rebuild Spicer manual transmissions, Fugli power shift transmissions, dropboxes & axle with ONE YEAR WARRANTY! 3. We now rebuild computer control boxes for Steiger tractors 1982-1999. 800-982-1769 www.bigtractorparts.com

NEW, USED, AND REMAN PARTS. TOLL FREE: 1-877-928-1646 32427 OLD HWY 34, TANGENT, OR 97389

Combine Parts, Rebuild Kits, Seats w/Air Suspension \$1,025, Reman Engines for Case/IH, John Deere, and Ford, JD 4010, 4020 Clutch Kits \$715, SALVAGED TRACTORS, Farmland Tractor Supply. Parts @Farmlandtractor.com

907 Nursery Equip. & Supplies

R & G MACHINING AND ENGINE PARTS. COMPLETE DIESEL MACHINE SHOP AND TRUCK REPAIR. MULINO, OREGON • SHOP: 503-829-6038 • NATIONWIDE: 1-800-823-6038. We Absolutely, Positively Have The Best Remanufactured Engines Available Anywhere! Huge Inventory • Expert Technical Assistance

Table with columns: ENGINES BY R&G MACHINING, REBUILT DIESEL L/B ENGINES. Lists various engine models and prices.

Call on other gas or diesel engines. We are a major rebuilder on all diesel brands. All work done in house! IN BUSINESS SINCE 1975. OVER 250 ENGINES & 450 CYLINDER HEADS IN STOCK! We have a complete line of import diesels and obsolete diesels for your mini excavators or skidsteers. We work and repair all brands!

Need Engine Parts, Gas or Diesel - Check it out: www.ebay.com/str/grumpysperformancecenter

GK MACHINE INC. FUEL TANKS—UL 142 WITH SECONDARY CONTAINMENT. Turn-key above ground, all steel storage tanks, 250 up to 18,000 gal. Primer coat, urethane top coat and sand-blasted. Quality fuel storage tanks for split tanks for diesel, gasoline, bio-diesel, oil or ethanol. Most sizes In-stock! GK MACHINE INC — Donald Oregon www.gkmachine.com 503-678-5525