

# CLASSIFIEDS

VIEW ALL CLASSIFIED ADS ABSOLUTELY FREE AT CapitalPress.com

1-800-882-6789  
CapitalPress.com



**Capital Press**  
EMPOWERING PRODUCERS OF FOOD & FIBER

2870 Broadway St. NE  
Salem, OR 97303  
P.O. Box 2048  
Salem, OR 97308

OMISSION & ERROR: Capital Press will exercise due care to prevent omissions and mistakes, but its total liability for any error, in any advertisement published, shall not exceed the proportionate space in which the error occurred. Credit, when allowable, will apply to the first insertion only.

## CLASSIFIED INDEX

Acreage.....	579	Loans & Financing.....	667
Alpacas & Llamas.....	743	Logging Equip.....	893
Antique Farm Eq. & Parts.....	905	Mini Ranchettes.....	555
Antique/Classic Vehicles.....	201	Misc for Sale.....	828
Antiques & Collectibles.....	813	Mixed Livestock Sales.....	752
Arts & Crafts.....	816	Mobile & Mfd. Home.....	537
ATVs/Motorcycles.....	219	Nursery Equipment & Supplies.....	907
Auction Sales.....	354	Nursery Stock Plants.....	822
Automobiles.....	204	Obituaries.....	91
Bees.....	823	Orchard & Vineyard Property.....	570
Bison.....	761	Orchard/Vineyard Equip.....	917
Boat Trailers.....	260	Organic.....	826
Boat/RV Storage.....	269	Packing/Processing Eq.....	890
Boating Parts Accessories.....	254	Pasture.....	582
Boats for Sale.....	251	Pickups.....	211
Boats Wanted.....	257	Potato/Sugar Beet Equip.....	914
Building Materials.....	804	Poultry & Fowl.....	722
Business Sales Opportunities.....	643	Public Notices.....	107
Condos for Sale.....	510	Rabbits.....	725
Crop Protection Products.....	827	Ranches.....	561
Dairy Eq. & Supplies.....	872	Ranchettes.....	558
Dairy Farms.....	567	Real Estate Auctions.....	534
Dogs, Cats, Pets.....	728	Real Estate Wanted.....	531
Draft Horses & Equip.....	734	Recreational Property.....	540
Emu, Ostrich, Rhea.....	744	Refrigeration Equipment.....	863
Equestrian Property.....	552	Rentals, Leases.....	546
Exotic Animals.....	737	Residential Property.....	549
Farm Buildings.....	805	Rock, Sand & Gravel.....	803
Farm Equip Parts.....	902	RV Parts & Accessories.....	307
Farm Equipment.....	923	RVs & Travel Trailers.....	301
Farm, Yard, Estate Sales.....	351	Sawmill Equip.....	894
Farms.....	564	Seed.....	824
Feed, Grain.....	719	Services.....	664
Fencing.....	802	Sheep.....	740
Fertilizer.....	825	Shop Equip. & Tools.....	881
Fish.....	721	Sporting Goods/Hunting.....	819
Forklifts.....	896	SUVs.....	207
Fuel, Heating & Firewood.....	807	Swine.....	749
Garden, Turf, Yard Equip.....	908	Tanks & Storage.....	875
Generators.....	878	Timber Property.....	573
Goats.....	746	Timber/Lumber.....	801
Hay Equip.....	911	Tires & Wheels.....	228
Hay, Straw, Forage.....	716	Tractors.....	920
Heavy & Indust. Eq.....	899	Trailers Misc.....	316
Help Wanted.....	651	Trailers, Horse & Stock.....	319
Hemp.....	835	Truck/Auto Parts & Accessories.....	222
Horses, Mules, Donkeys.....	731	Trucks.....	210
Irrigation Equip.....	887	Utility Trailers.....	313
Land.....	576	Vacation Homes for Sale.....	513
Legal Notices.....	101	Vans.....	216
Livestock Equip. & Supplies.....	869	Well-Drilling Equip.....	884
		Work Wanted.....	652



Capital Press  
EMPOWERING PRODUCERS OF FOOD & FIBER

1-800-882-6789 • CapitalPress.com

### 210 Trucks



**2005 Freightliner Columbia Automatic** CAT C13 470HP, Allison Automatic, double lockers, 145K miles. Excellent shape, \$59,500 Gresham, OR. Tim 503-719-2545

### 210 Trucks



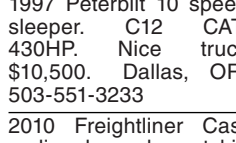
**1989 Ford F800 S/A Dump Truck.** 429-4V Gas. 5.8. 7-8 yard bed. New rubber. Low miles. Former City truck that has been well maintained and works and operates well. Drive it anywhere, \$5900. Located in Twin Falls ID. Call 208-613-0050

### 210 Trucks



**1982 Peterbilt 359 dump truck,** Cummins Big Cam 400, Eaton 13 speed, Hendrickson suspension. Good condition, well maintained, \$25,500 OBO. Central OR. Text/call 503-351-4412

### 210 Trucks



**2010 Freightliner Cascadia,** day cab, wet kit, \$27,000, Silverton, OR. 503-932-0766

### 210 Trucks



**2003 Ford F550: 4x4 Diesel Lariat,** 10ft flatbed dump. 1 Owner, 48K miles, \$26,500. Northern, CA. 707-489-2854

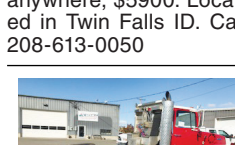
### 210 Trucks



**2005 Freightliner M2 6x6,** CAT C13 410HP, 10 speed, double lockers, 12K Original Miles, \$69,500. Gresham, OR. Tim 503-719-2545



**1991 IHC 9300 semi-tractor.** 3406B CAT Diesel. 425 HP. RTLO 13 SPEED PS, AC, JAKE. 80% Rubber. Hendrickson spring. 234K. ACTUAL MILES. Lots of nice aluminum boxes and rack. One owner former Govt. Absolutely immaculate. \$19,900. Located in Twin Falls ID. Call 208-613-0050



**1989 Ford L9000 with Cat 3406B,** 425HP and 14-6-13 transmission. Retarder, PS. Power mirrors. Nearly new 11R22.5 Radial Tires. Hendrickson spring rear. Nice aluminum tool boxes. 149,000 ACTUAL MILES. One owner former Municipal Fire Dept truck that is in near new condition. Runs and drives the same way. Beautiful truck. \$19,900. Located in Twin Falls ID. Call 208-613-0050



**1994 AutoCar White GMC tandem axle tractor.** 133,000 ACTUAL Miles. N14 Cummins, 410 HP. RTLO 13 speed. Jake, PS, AC. Hedrickson rear. One owner ex-GOVT. 80% rubber. In near new condition. \$21,900. Located in Twin Falls ID. 208-613-0050



**1992 International 6300 Navistar single axle truck,** Cummins L6 engine, 9 speed manual, spring suspension, 481,524 miles, tires 90% or better. Great for hauling short seed trailers. Good condition. Previous Dept Corrections truck, \$8900. Sublimity, OR. 503-949-3065 text or call

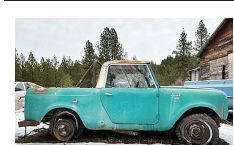


**4x4 Japanese Mini Trucks & Dump Trucks:** Honda, Suzuki & others. Truck capability, quad maneuverability. Mini trucks starting @ \$3995. Portland, OR. 503-805-2684 www.oregondieselimports.com



**2001 GMC T7500 with walk in utility bed,** 2000 Lb. Autocrane, 185 CFM LeROI Diesel air compressor and Yamaha 6500 Watt Diesel generator. Brand new 11/22.5 radials. 7.8 Liter Isuzu Diesel. Allison 6 speed automatic transmission. PS, AC. 96K ACTUAL MILES. Well maintained one owner Municipal truck from California. Runs and operates like new, \$12,900. Located in Twin Falls ID. Call 208-613-0050

### 201 Antique/Classic Vehicles

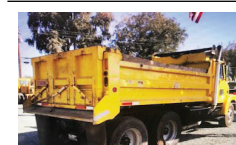


**What A Find! 1962 IH Scout,** all complete, clean title, \$5500. Pendleton, OR. 541-377-0332

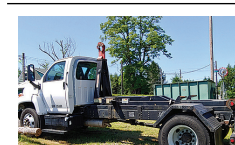
### 210 Trucks



**1988 Bluebird Conversion bus.** 40FT. 3208 CAT Diesel. Allison AT. 3 roof AC units. 10 KW Onan Diesel Genset. Toilet. Sink. Water tank. 2 holding tanks. 85% 11R/22.5 radial tires. Former Mobile classroom. One owner Excellent fleet maintenance. Ready for easy conversion. Very Roadworthy. \$7900. Located in Twin Falls Idaho. Call 208-613-0050



**1989 Freightliner FL112 tandem axle dump truck with 14ft. dump bed and load tarp.** 10.5 L. L6 Diesel. Allison 5 speed. Auto Transmission. PS, AC. 100,660 ACTUAL MILES. Former County vehicle from Southern California that has been well maintained and operates and drives like new. Work Ready. \$15,900. Located in Twin Falls Idaho. Call 208-613-0050



**2006 GMC C 7500 Topkick Duramax diesel,** Allison automatic transmission. AC, 22.5 tires. LOW MILES, 31,096. Body like new. Stellar hooklift unit. 16ft. Beaver tail diamond plate flatbed with tool box. (2) 12ft. Drop boxes & (3) 14ft. Drop boxes. All for just \$65,000. Vancouver, WA. 360-256-5010



**2005 Sterling CO with 24 ft. box van.** 3500 lb. liftgate. Cummins 5.9 Diesel, Allison 6 speed auto transmission. PS, AC, CC. 80% 11R22.5 tires. Air lift tag axle. Very clean and well maintained truck from a Federal Agency, \$9900. Located in Twin Falls ID. Call 208-613-0050

### 210 Trucks

**2004 Kenworth T900 Quad Axle,** 600HP CAT, wet kit, GPS, \$27,000. Lebanon, OR. 541-905-6064

"...Sold both bulls second week. Thanks!" Tiara Farm Port Townsend, Wash. You sell too at 1-800-882-6789.

**HEMP** • HARVESTING 503-932-0766  
• DRYING Klopfenstein  
• POLISHING Ag Service

## Newsday Crossword

- ACROSS**  
1 Battlefield healer  
6 Radar screen images  
11 Sesame Street network  
14 "Well done!"  
15 Cowboy contest  
16 Lab maze runner  
17 Soldier's clothing  
19 Long-term svgs. plan  
20 Little litter members  
21 Angled edge  
23 Falling behind  
27 Comment  
28 Weds secretly  
29 Enthusiasm  
31 "Are you calling me \_\_\_?"  
32 "\_\_\_ the night before..."  
33 Exam  
36 Mom and Dad's boy  
37 Piece of the action  
38 Evergreen tree  
39 Therefore  
41 Window glass  
42 Sparkle, as shoes  
44 Baseball and golf  
46 Hard to find  
47 In recent days  
49 Sent unwanted email to  
50 Make better  
51 Annoy  
53 Espionage org.

- 54 Riding academy building  
60 Finish  
61 Flared dress shape  
62 Heron's cousin  
63 Tofu source  
64 Man in the choir  
65 Origins  
**DOWN**  
1 CEO's degree, perhaps  
2 Slip up  
3 Beaver's work  
4 Climbing vine  
5 Deliveryperson  
6 Tote with you  
7 Church balcony  
8 Wedding vows  
9 Part of mpg  
10 Gloomy

**CONSTANTLY** by Billie Truitt  
Edited by Stanley Newman  
www.stanxwords.com

- 11 Closely held business  
12 Less decorated  
13 Piece of celery  
18 Convent residents  
22 Give off  
23 Rental agreement  
24 "It's \_\_\_ nothing!"  
25 In an exclusive relationship  
26 Coll. student's stat  
27 Move upward  
29 Graceful birds  
30 Whittle down  
32 "\_\_\_ does it!"  
34 Starting from  
35 Trapped on a branch  
37 Agile  
40 Ready for business  
42 Strew randomly  
43 Sandwich meat  
45 Tritite  
46 Hot tubs  
47 Shoestrings  
48 Acid in proteins  
49 Cattle drive animal  
51 Ireland, poetically  
52 "It comes \_\_\_ surprise..."  
55 Bullring cheer  
56 In the past  
57 Sis' sibling  
58 Allow  
59 Sci-fi creatures: Abbr.

1	2	3	4	5	6	7	8	9	10	11	12	13
14					15						16	
17					18						19	
				20					21	22		
23	24	25	26						27			
28							29	30				
31							32			33	34	35
36							37				38	
39			40				41			42	43	
			44				45				46	
47	48								49			
50							51	52				
53							54	55			56	57
60							61				62	
63							64				65	

Answer in Classification 894

As dependable as the 4 seasons  
Agricultural and natural resource news you can trust.

Capital Press  
1-800-882-6789  
Subscribe  
1-800-781-3214  
CapitalPress.com

## LOVELL Truck Sales 50th Anniversary



**2012 Freightliner,** tandem axle, day cabs, DD13, 10 speed Fuller, engine brake, PS, cruise control, air ride, 341k miles..... \$39,500 ea.



**2013 Peterbilt 389 ISX Cummins Engine 550 hp,** Aluminum Wheels, 70 in Sleeper, ps, ac, cc, air slide 5th wheel, dump valve, loaded interior ..... \$55,500



**(3) 2013 Freightliner 3-Axle Day Cabs,** Allison Auto transmissions, DD13, 450hp, 4.11 ratio, PS, AC, CC, tilt and tele, PW, PC, air slide 5th wheel, 177" WB, engine brake ..... Starting at \$36,500



**(2) 1993 Freightliner 3-axle Cab & Chassis** will take a 24' bed or van box. Cummins 8.3, 275hp, 9 speed, 4 spring suspension, 240" WB ..... \$12,500



**2006 GMC T7500,** Isuzu diesel, automatic transmission, 20'x102" box, tuck away gate, 82k miles, air brakes, 26,000 GVW ..... \$14,500



**2011 Freightliner M2-112,** tandem axle, DD13, fuller 10 speed, engine brake, 24'x8' box, tuck-away gate and walk ramps, ps, ac, cc, pw. Very nice truck ..... \$29,500



**2014 Peterbilt 385,** 455hp, Fuller 10 speed, PS, AC, CC, tilt and tele, engine brake, air slide 5th wheel, dump valve, aluminum wheels, 350k miles, very clean truck ..... \$37,500



**2014 Isuzu NPR,** with 16" boxes, diesel, automatic trans. .... Starting at \$18,500



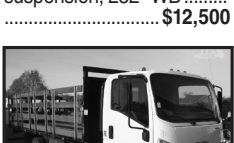
**2000 Freightliner FL-80 3-axle Box Truck or Cab and Chassis,** CAT, 275hp, spring suspension, 252" WB ..... \$12,500



**2004 Peterbilt 3-Axle Day Cab,** Cummins, 10 speed, 3.90 gears, PS, AC, CC. Air fairings can be easily removed ..... \$12,500



**2015 Freightliner 58" sleeper,** tandem axle, DD16, 560hp, 18 speed, 228" WB, Dual air axle lockers, engine brake ..... \$35,000



**2015 Isuzu 18' Flatbed NPR HD,** Isuzu diesel, automatic transmission, PS, AC, CC, PW, PL ..... \$22,500

1-800-451-0012  
(503) 266-5886 • FAX (503) 266-6903  
LOVELLTRUCKSALES.COM  
680 SW 1st Ave (Hwy 99 E) • Canby, OR