

210 Trucks



1989 Freightliner FL112 tandem axle dump truck with 14ft. dump bed and load tarp. 10.5 L. L6 Diesel. Allison 5 speed. Auto Transmission. PS, AC. 100,660 ACTUAL MILES. Former County vehicle from Southern California that has been well maintained and operates and drives like new. Work Ready. \$15,900. Located in Twin Falls Idaho. Call 208-613-0050

210 Trucks



2008 Ford 4x4 F450 with little used 8.5ft. Meyer 4 way snow plow. 12ft. stake side flat bed. 6.4 Powerstroke diesel. Tilt, CC, PW, AC. Alcoa aluminum wheels. Good rubber. 90K ACTUAL MILES. Formerly owned by a Calif. Fire Dept. As clean as new and very well maintained. Work ready. \$19,900. Located in Twin Falls ID. Call 208-613-0050

210 Trucks



1996 Freightliner FLD112 2 axle semi tractor. Cummins 10.8L & Eaton Fuller 9 speed, odometer reads 049,800, \$5,400. Newberg, OR. 503-537-4297

210 Trucks

2006 Volvo, day cab, auto, 450,000 miles, \$12,000. Silvertown, OR. 503-932-0766



1991 IHC 9300 semi-tractor. 3406B CAT Diesel. 425 HP. RTLO 13 SPEED PS, AC, JAKE. 80% Rubber. Hendrickson spring. 234K. ACTUAL MILES. Lots of nice aluminum boxes and rack. One owner former Govt. Absolutely immaculate. \$19,900. Located in Twin Falls ID. Call 208-613-0050

210 Trucks



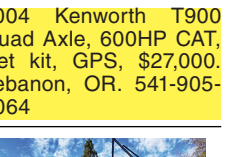
1994 Ford LTL9000. 4000 Gallon Water Truck. 6 sprays, hose reel, brand new pump and drive line. Brand new rubber, \$27,500. Othello, WA. 509-539-4203

210 Trucks



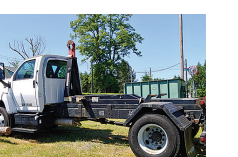
1982 Peterbilt 359 dump truck, Cummins Big Cam 400, Eaton 13 speed, Hendrickson suspension. Good condition, well maintained, \$25,500 OBO. Central OR. Text/call 503-351-4412

210 Trucks



2004 Kenworth T900 Quad Axle, 600HP CAT, wet kit, GPS, \$27,000. Lebanon, OR. 541-905-6064

210 Trucks



2006 GMC C 7500 TopKick Duramax diesel, Allison automatic transmission. AC, 22.5 tires. LOW MILES, 31,096. Body like new. Stellar hooklift unit. 16ft. Beaver tail diamond plate flatbed with tool box. (2) 12ft. Drop boxes & (3) 14ft. Drop boxes. All for just \$65,000. Vancouver, WA. 360-256-5010



Brush Bandit 100 Chipper. Gas-Powered. 4-cylinder Ford. New Blades.....\$8,900



2005 Chevrolet 2500 HD Utility Truck. 6.0L Vortec, & A/T. 8' Box & Rack..... \$7,900



2007 Sterling A-9500 Tr/Trk. Detroit Series 60 @ 455hp. & 7-Spd.....\$8,900



2011 Ford F-550 4x4 Utility W/Crane. 6.7L Diesel & A/T..... \$29,500



2001 Ford F-550 18' Flatbed. 6.8L V-10 & A/T.....\$8,500



2009 3/4-ton Chevrolet Utility Truck. Ex-Cab. 4x4, 6.0L V-8 & A/T..... \$7,500

ChambersMotorCo.com
(503) 663-7200 • Boring, OR
S165187-1

KENWORTH T800 4-AXLE CHASSIS

Your Choice

\$60,000

4 TRUCKS FOR SALE

Cummins ISX engines, 18-spd. trans. (RTL0189188), single spd. Eaton rear-ends 4:10 or 4:11 gears w/locker, HENDRICKSON HAUL-MAX WALKING BEAM SUSP.

- #13 R179267 2007, D46-170HP rears, 272" WB, 475hp.....\$60,000
- #16 R179268 2007, D46-170HP rears, 254" WB, 475hp.....\$60,000
- #30 R179277 2007, D46-170HP rears, 254" WB, 475hp.....SOLD
- #36 R179270 2007, D46-170HP rears, 265" WB, 475hp.....SOLD
- #40 R179271 2007, D46-170HP rears, 266" WB, 475hp.....SOLD
- #81 F064741 2004, DSP-463P rears, 270" WB, 475hp.....\$60,000
- #82 R118646 2006, D46-170HP rears, 254" WB, 475hp.....\$60,000

CLEAN AND IN EXCELLENT SHAPE! MAINTENANCE RECORDS - REGULAR OIL SAMPLES

More info: www.irelandtrucking.com
Thomas H. IRELAND INCORPORATED Call Charles Ireland 541-863-1501 Myrtle Creek, OR
 S164983-1

DORNGOOD DEAL.COM

CUMMINS DIESEL

2008 DODGE RAM 3500 CREW CAB, 5.9 Cummins diesel, automatic, air, tilt, cruise control, power windows and locks, am/fm CD player, DVD player, only 136k actual miles.....\$21,995

POWERSTROKE DIESEL

2011 FORD F-250 EXCAB, 4x4, white, 6.7L Powerstroke diesel, AT, AC, PS, 4 lockable toolboxes, am/fm CD player, vinyl floors, 74k actual miles.....\$32,995

LONG BED

2004 CHEVROLET SILVERADO 1500 extra cab with rear suicide doors, long bed that doesn't have a dent inside it, V8 auto, air conditioning, intermittent wipers and cruise control, 131k actual miles and fleet maintained.....\$8,450

4X4 38K ACTUAL

2004 FORD F-450 4X4 CREW CAB 12' FLATBED, V10, Auto, Air cond, one owner, fleet serviced, good tires, clean truck, 15,000 GVWR, only 38k actual miles.....\$22,995

F-450

2001 FORD F-450 SUPER DUTY, 2wd, V10, auto, air, am/fm, utility box, towing package, 15k GVWR.....\$7,995

Come see us soon or call Mike Dorn or John Dorn. We would love to hear from you today! (If you don't like talking to John, just ask for Mike.)

DORN BROS. TRUCK SALES, Inc.
SINCE 1947
(503) 585-4731
3130 PORTLAND RD. • SALEM, OR
Prices good for 1 week from publication date.
S164995-1

CLASS 8 TRUCKS 509-534-9088

A Healthy & Prosperous year from Class 8 to you

2001 International 9100i CAT C12 430 hp 1650 tq, 10spd, Auto shift, 4.11 ratio, 173" Wb, good low miles, **CALL**

1996 Peterbilt 377 Detroit 12.7 470 hp, Jake brake, AC, 10 spd, 3.90 ratio, air ride **CALL**

Just Arrived 2006 Freightliner Columbus, Detroit S60's 10 spds, sliding 5th wheel, one with double lockers, going through the shop now! **CALL**

2001 Freightliner FLD120's (2) CAT C12 430 hp, 10 spd, 3.90 ratio, 170 WB, Sliding 5th wheel, low miles **\$22,900**

2004 GMC W5500 Reefer Truck TK MD200, 16' Kidron Box E-track and racking. Auto trans, electric standby. **\$14,900**

2004 - 23,000 original miles!! Under 26K and a ALLISON AUTO. No emissions. **\$24,900**

S165286-1

Bruce Chevrolet

"A Name You Know & Trust"

866-449-9351

FULL LINE OF CHEVY PRODUCTS!

\$48,576

NEW 2019 Chevrolet Silverado 3500HD CC V8, 6.0L, 6 speed automatic

Stock Number 1980082

\$48,888

NEW 2018 Chevrolet Low Cab Forward 4500 Gas, Uppfitted 12ft Flatbed, 8 Cylinder, 6 speed automatic

Stock Number 1880323

\$68,575

NEW 2019 Chevrolet Silverado Chassis Cab ULTRA Contractor Dump Body

Stock Number 1980283

\$58,886

NEW 2019 Chevrolet Silverado Chassis Cab 4500 12ft Flat Bed

Stock Number 1980238

\$68,888

NEW 2018 Chevrolet 4500XD Low Cab Forward 12ft Landscape Dump, 4 cylinder, automatic

Stock Number 1880300

\$44,444

NEW 2018 Chevrolet Low Cab Forward 4500 Gas Uppfitted 12ft Flatbed, 8 Cylinder, 6 speed automatic

Stock Number 1880329

\$69,575

NEW 2019 Chevrolet Silverado Chassis Cab Jet Black

Stock Number 1980272

\$42,499

NEW 2018 Chevrolet Express Commercial Cutaway 18 Express Uppfitted 12ft Box, V8, 6.0L, automatic

Stock Number 1880308

\$68,575

NEW 2019 Chevrolet Silverado Chassis Cab 6.6 Liter, 8 cylinder

Stock Number 1980192

866-449-9351

1084 SW Oak St., Hillsboro, OR

www.brucechevrolet.com

S165208-1

EVERYTHING YOU NEED

To Keep Your Truck Moving

Hagerman, Inc.

Sales • Service • New & Used Parts

Truck Shop

- Large Inventory of 600+ Salvage Trucks with Most Parts Readily Available
- Get Your Truck On the Road Faster for Less Out of Pocket Cost
- Full Service, DOT Inspections, Service/Road Calls, etc.
- Tractor & Trailer Repairs – Both Minor & Major

Tire Shop

- New & Salvage Tires & Wheels
- Flat Repair
- Service/Road Calls

Gear Shop

- Repair, Rebuild, or Exchange
- Transmissions, Differentials – Front & Rear, etc.
- 300+ Inventory of all Makes & Models
- Used Engines Available

Surplus

- Two Warehouses Full of New Surplus Parts - Aftermarket & OEM
- Hoods, Mirrors, Headlights, Wide Variety of Seats & Much More

Come see us today or go online to view our inventory!

"One of Oregon's Largest Heavy-Duty Wrecking Yards"

www.hagermanparts.com

WANTED!

Military Vehicles, Halftracks, Tanks & Dodge Power Wagons

WE PAY CASH! & Pick Up at Your Location

707-486-2882

rattlecanejohnny@gmail.com

Trucks Trailers & Forklifts

(206) 571-8782

1994 Peterbilt, 20,000 miles on new transmission, \$10,000 OBO. Fortuna, CA. Call/ text 707-496-6031

1999 Peterbilt 377, N14 Cummins Select Plus 435HP (red top), 13 speed, wet kit, 210" wheelbase, set back axle, 608k miles, \$23,000. White City, OR. 541-499-8723

2007 GMC W4500 16' x 8' van, 190hp diesel, tuckaway gate, 3 spd. Allison AT, 180,075 miles.....\$14,950 (3) Other diesel vans in stock

1980 International, 220" WB, Hendrickson spring over beam, DT 466 diesel, 9 spd. tranny. Has 282,956 miles, will accept 24' bed.. \$5,950 Have (6) other single and tandem axle C+C's in stock.

1988 Bluebird Conversion bus. 40FT. 3208 CAT Diesel. Allison AT. 3 roof AC units. 10 KW Onan Diesel Genset. Toilet. Sink. Water tank. 2 holding tanks. 85% 11R/22.5 radial tires. Former Mobile classroom. One owner Excellent fleet maintenance. Ready for easy conversion. Very Roadworthy. \$7900. Located in Twin Falls Idaho. Call 208-613-0050

1990 Ford 5 yd. dump, 6.6L Ford diesel, 3 spd. Allison AT. Has air brakes and NO CDL REQUIRED! Will represent well. Runs good. Looks good!.....\$8,950

www.protruck.com

S164937-1

ARMY TRUCKS

4x4 & 6x6

COMPLETE PARTS INVENTORY

MEMPHIS EQUIPMENT

901-774-0600 (TN)

www.memphisequipment.com

THE NATION'S LARGEST ARMY TRUCK DEALER

Rebuilder, Custom Rebuilds, Exchange Units

Two-Year Warranty on Rebuilds • Factory Warranty on New Units

We are different! Did you know? With Ratco you can interview and discuss your rebuild with the technician working on your unit. We have both transmission and differential specialists. We are happy to send pictures of what we find, talk to you after inspection, and save your parts. Units 5-ton and larger. 24 hour turn around on most units.

RATCO

TRUCK GEAR SPECIALISTS

SHOP BACK AT:
3620 Olympic Street
Springfield, OR | 541-747-2849
S155348-1

Free Weekly Pickup/Deliveries: Portland, La Grande, & Bend, OR

Two Locations For Your Convenience

82891 Bud Draper Dr. Umatilla, OR 541-922-6455

7100 NE Columbia Blvd. Portland, OR 503-289-0637

Mon-Thurs: 6am - 5pm
Friday: 6am - 4:30pm

Se Habla Espanol

WANTED: TRUCKS

We Buy & Sell Used Trucks RUNNING OR NOT!

Contact Neil : 503-521-6935

neil@hagermanparts.com