

923 Farm Equipment

923 Farm Equipment

923 Farm Equipment

923 Farm Equipment

923 Farm Equipment

923 Farm Equipment

923 Farm Equipment

923 Farm Equipment



2016 Dion pull type forage harvester (chopper) with a 2019 corn/hemp head, 150 hours on corn/hemp head, extended chute for easy loading into a trailer or dump cart, \$65,000. Salem, OR. 503-580-4261



John Deere/ Frontier 10' disk, 2018, scrapers and furrow fillers, rear hitch, \$5950 OBO. Warren, OR. 503-952-6433



John Deere Air Drill 1860/1900, 30' width, 10" spacing, 270 bushel air cart. Stainless meter housing, all run blockage monitor. Openers, closing wheels and seed boots all in good shape. Mud Smith gauge wheels. Vicon spreader mounted on drill, \$55,000. Harrisburg, OR. 541-954-5862



400 gallon turbo-mist air blast. Very clean, field ready, \$13,500. Silverton, OR. 503-932-0766

Containers For Sale

20' and 40'

REFRIGERATED CONTAINERS AVAILABLE

Portland Container
9449 N. Burgard Way, Portland OR
Call Alan Conner (503) 286-1767
or 1-800-788-5159
boxsales@pdxcontainer.com
(Credit Cards Accepted) \$135081-1

FI SCHER MILL SUPPLY, INC.
TRACTORS - LAWN EQUIPMENT - IMPLEMENTS - PARTS - SERVICE - FEED - HARDWARE

OREGON CITY, OR • 503-631-3411
NEW ON-LOT KIOTI INVENTORY

KIOTI
run ahead of the pack

ZERO PERCENT FINANCING & CASH BACK OPTIONS

2019 CK2510 HST TRACTOR 24.5hp, 3 Cyl Diesel, 4WD, Hydrostatic Transmission, 19hp PTO, 11.3 GPO Total Hydraulic Flow.

2019 CK2610 HST TRACTOR 24.5hp, 3 Cyl Diesel, 4WD, Hydrostatic Transmission, 21.5hp PTO, 11.7 GPM Total Hydraulic Flow.

2019 CK3510E HST TRACTOR 34.9hp, 4WD, with Loader, 3 Cylinder Diesel Engine, Dual Pedal Hydrostatic Transmission, Platform/ROPS, Power Steering, Single Lever Joystick.

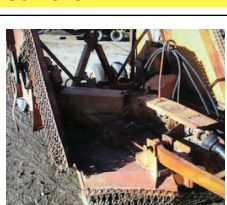
2019 CK3510 HST TRACTOR Base Tractor Engine Gross Power: 34.9hp, 4WD, 3-cylinder diesel, Hydrostatic transmission, PTO: 30.8 hp

CALL FOR SPECIAL PRICING!
VISIT FISCHERMILLSUPPLY.COM TO SEE OUR ON LOT INVENTORY

2019 CK3510 HST TRACTOR Base Tractor Engine Gross Power: 34.9hp, 4WD, 3-cylinder diesel, Hydrostatic transmission, PTO: 30.8 hp

CALL FOR SPECIAL PRICING!
VISIT FISCHERMILLSUPPLY.COM TO SEE OUR ON LOT INVENTORY

2008 MacDon M150 swather with 2009 D60-D15 9 bat draper header, 766 hours, \$70,000. **2011 D60 25' draper header** \$30,000. Moses Lake, WA. 509-750-7918



1994 Alamo AG151V Rotary deck mower. 15ft. cut. Batwing. Mechanical. Formerly owned by a State Agency and has been well maintained and is work ready. Excellent rubber also, \$3900 Located in Twin Falls ID. Call 208-613-0050



Lemken 8 furrow rollover plow. New- never been used, \$62,500. Klamath Falls, OR. 806-717-7337

MacDon 9000 Turbo, 1994, 2127 hours, 920 grass seed special header, \$22,000 OBO. Junction City, OR. (541)998-1902

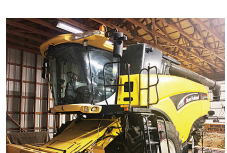
RETIRED: John Deere 4890 swather, 1770 hours, excellent condition, \$25,000. John Deere 430, restored, \$5,000. John Deere D steel wheels, \$5,000 restored John Deere 4 bottom plow, \$400. 10' & 12' flex harrow, \$200 each. Banks, OR. 503-313-8079



ONLY ONE LEFT! John Deere R450: with grass seed AIR headers. Approximately 1,100 engine hours and 725 header hours. All modifications and updates have been done. Extremely well cared for. Engine oils changed and ready for next season. \$100,000. Silverton, OR. 503-871-4325



90' Aluminum Booms OFF John Deere 4630. Sprayer, complete liquid system, tank and pump, \$25,000 OBO. Sublimity, OR. 503-932-9934



2003 CX 840 New Holland combine, with pick-up header, radish popper, 2900 separating hours, \$60,000. Albany, OR. 503-510-7779

40' Burley Ironworks Compost Spreader Trailer with spinners. New Fall 2018, \$64,000. Lebanon, OR. 541-905-6064

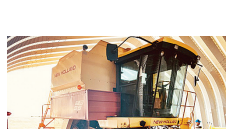


15' Northwest rototiller, newer gear box and blades, \$11,000. Albany, OR. 503-510-7779



Brent disc ripper, 5 shank, notched blades. New tire and cylinder, \$10,500. Albany, OR. 503-510-7779

Schulte snowblower RDX110 Avalanche, 2 chutes, great condition, \$11,000. Shulte RDX1500 rotary cutter, good condition, \$9000. Bellevue, ID. 208-788-3080, 208-720-8792



New Holland TR96: 25' header, newer tires, lots of chromed parts. Good, low cost machine! Would make good hemp combine, \$8,700 OBO. Grass Valley, OR. 541-980-3222



John Deere 329D compact track loader. New tracks, rollers, sprockets. 3429 hours, \$28,500. Woodburn, OR. Call/text Greg 503-969-8705

SINCE 1979 **BOYD'S IMPLEMENT**
www.boyds-implement.com
1-877-842-9408
Tillamook, OR

Kubota Kuhn-Knight NUHN GEHL BALZER MEYER HAGEDORN

McCORMICK

Kubota GR2120 mower w/ bagger, 93 hours \$8,000

Kubota ZD326, zero-tum mower, diesel, 132 hrs. \$10,750

Kubota L245T, 23 PTO hp, loader..... \$4,500

Case 995, 65hp, 2WD. \$4,500

Ford 5000, 64PTO HP, manual..... \$6,000

Case SV185 skid loader..... \$9,500

New Holland 1412 mower..... \$5,000

Kuhn FC303GC moco, 9'10", 6-disc \$10,000

Botec 4063 4-auger mixer wagon, 630 cu. ft. **Make Offer**

2017 Nuhn 5,000 gal. vacuum w/top load..... \$45,000

AgBag G6500 9' silage bagger..... \$5,000

Don't See It? Give Us a Call!
\$162625-1

Spokane February 4-6, 2020 AGEXPO

26th Annual Special Section

Reserve your space for the upcoming Spokane Ag Expo Special Section!

Place your ad by Thursday January 2nd at 10AM.

Let this special section deliver your advertising message to our print and online readers.

Contact your sales rep today or call 800-882-6789.

PUBLISHES JANUARY 31ST
AD SPACE DEADLINE IS JANUARY 2ND

Capital Press
EMPOWERING PRODUCERS OF FOOD & FIBER

FISCHER MILL SUPPLY, INC.
503-631-3411
WWW.FISCHERMILLSUPPLY.COM

WINTER SPECIAL

10% OFF

DECEMBER 15TH - JANUARY 31ST

AGCO, KIOTI, HESSTON PARTS -AND- IN-HOUSE SHOP SERVICE

MASSEY FERGUSON FISCHER MILL SUPPLY, INC.
YOUR LOCAL FARM SUPPLY SINCE 1889
503-631-3411
20990 S Fischer Mill Road
Oregon City, OR

"Fall Special" Limited Time/No trade on MF-GC1700 Series with mention of this ad!

GC 1723E	\$12,250	GC1723EB	\$16,850
GC 1725M	\$13,440	GC1725MB	\$18,350

USED TRACTORS	MISCELLANEOUS
Massey 1736 Cab Tractor/Loader \$30,000	Komatsu PC150-5 Excavator \$29,500
Ford 1520 Tractor/Loader, Hydro \$8,000	Gleaner M Combine 13' Header \$5,500
Kubota B7510 HSD T/L \$9,750	Kverneland C-2 2-Bottom Plow \$1,100
Kubota M7060 Cab T/L, Low Hours..... \$45,900	Agric BMS60 Tiller, 60" \$2,950
Case IH 385 Tractor/Loader/Canopy..... \$8,950	Maschio A-100 Tiller, 42" \$1,750
Hinomoto Tractor/Loader..... \$3,950	Dunham Lehr 10' Cultipacker..... \$5,750
Case 4690 260hp 4WD \$16,900	Brillion Roller, 10ft \$1,750
Kubota B1750DT Tractor/Front Weights..... \$6,250	Farmhand CP40 12ft Roller \$2,950
Massey GC2300 T/L/MM..... \$8,500	Tortella 60" Spader \$3,950
Case 885 Tractor/Mower..... \$5,950	Rears 100 gal PakTank w/Booms..... \$2,250
Case 1210 Tractor 2wd..... \$4,250	Aerway AW080H Aerator 7' Pull..... \$5,750
	MC Model 1980 Tree Planter \$3,950

SEE ALL INVENTORY ONLINE AT FISCHERMILLSUPPLY.COM

A YEAR OF IDAHO INNOVATION

Reserve Your Space for Upcoming

IDAHO AG INNOVATORS

Place your ad by Thursday January 2nd at 10AM

Let this special section deliver your advertising message to our print and online readers.

Contact your sales rep today or call 800-882-6789.

Publication date: January 31, 2020
Deadline: January 2, 2020

LABOR SAVING EXCELLENCE

Bringing efficiency to on-farm feeding for Smart Farmers

"IT'S A SINCH" - Made in Oregon

A GAME CHANGER
"With the Sinch Bale Feeder I can feed 500 head in half an hour."
Matt Lake, Utah.

- Can Be Installed On Your Trailer
- 4, 6, 8 & 10 Bale Models
- Roi No Brainer
- Tractor And Pick-up, Towed And Tray Truck
- Videos On Website

SINCH Bale Feeders™
feeding farm efficiency

info@sinchbalefeeders.com
sinchbalefeeders.com
541-443-3234

END OF YEAR INVENTORY REDUCTION

Ray Brothers Equipment

Call or Text Chris at 208-880-6344 (Cell) 541-446-3265 (Office) • Ironside, OR • Financing Available!

Ask About our Rental/Purchase/Consignment Program
Includes 100 hrs of use per month
FREE Delivery to the Treasure Valley

View Our Shop and More Pictures at:
www.Ray-Brothers.com
