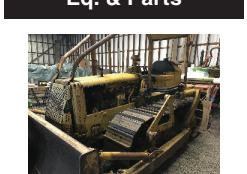


905 Antique Farm Eq. & Parts



1952 Caterpillar D4 7U: 3742 actual hours, all original with Cat blade. Corvallis, OR. 541-619-6166

Minneapolis Moline Model R, gas, wide front, runs like new, sn0174900846, \$1250 USD. Chilliwack, BC. 604-794-7139



1938 John Deere Model "D". Runs Good. In original condition, \$6650. Nampa, ID. 208-870-5787

907 Nursery Equip. & Supplies

USED NURSERY CONTAINERS:
Used, but reusable nursery containers. All sizes. Inventory changes daily. Call for current availability and prices. Sawyer Farms, Scio OR. 503-769-3417, juddsfarm@vvi.com (also wanted: used containers)

FRESH SAWDUST:
Consistently fair pricing. 9 Unit Loads Now Available Forest-Grove, OR. For pricing call 503-849-0216

IF YOU HAVE A BEEF -
sell it in next week's Capital Press!

911 Hay Equip.

Twinstar V Rake 2024
Excellent condition, low hours, 20,000. Castle Rock, WA. 360-274-4422

Freeman 5300 Big Bale Wagon, \$65,000. 2 Krone 1290 balers, 3x4, \$60,000 or \$50,000. New Holland BW28, Mil-stak and 3 tie attachments, \$115,000. Silver Lake, OR. 541-480-3371

HAY EQUIPMENT

HAY EQUIPMENT:
(2) 2009 New Holland BB9080 3X4 balers with scales, 44K & 49K bale counts, price starting at \$40,000.

2013 Massey Ferguson 2170XD 3X4 baler with scales, 45K bale count, \$60,000.

2013 Mil-Stak PT/2012 large bale stacker, 12 bale table, 120K bale count, \$70,000.

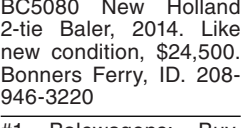
(2) Fella rotary rakes: 21' & 24.6' wide, \$8,500 and \$14,000.

2010 Massey Ferguson rotary rake, 24.6' wide, \$16,000.

All equipment stored inside. St. Paul, OR. 503-800-1448

McHale 991BE Wrapper, like new, excellent condition. Bellingham, WA. 360-961-5877

New And Used Parts:
for all models New Holland bale wagons. **Largest Inventory in North America.** Sod Busters Sales, Polson, MT. 877-735-2108 or 406-883-2118

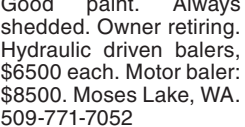


BC5080 New Holland 2-tie Baler, 2014. Like new condition, \$24,500. Bonners Ferry, ID. 208-946-3220

#1 Balewagons: Buy, Sell, New Holland 2&3 wide self-propelled, pull-type models, parts, tires, manuals. Caldwell, ID. 208-880-2889 www.balewagon.com



(4) Freeman 330 3 tie Balers: 3 hydraulic drive and 1 motor baler. Field Ready. Big twine boxes, hydraulic drive hay saver wheels. Spare parts. Good paint. Always shedded. Owner retiring. Hydraulic driven balers, \$6500 each. Motor baler: \$8500. Moses Lake, WA. 509-771-7052



Six New Holland 580 balers to choose from. Field Ready. Some with hydraulic pickup/ swing. Pricing varies. \$5500-7500. Volume Discount. Quincy, WA. 509-237-1663

Massey Ferguson 1839 Square Baler, \$18,000. John Deere 338 Square Baler, \$5000. John Deere 582 Round Baler, \$16,000. New Holland 1412 Mower Conditioner, \$10,000. Ferndale, WA. 360-366-3611

New Holland 1095 Bale Wagon: 3 tie bale chute and Mil-Stak bale clamp, stored under cover, 5025 hours, good condition, \$48,000 OBO. Dallas, OR. 503-580-8943

Capital Press CLASSIFIEDS
1-800-882-6789
CapitalPress.com

907 Nursery Equip. & Supplies

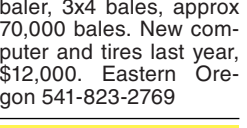
911 Hay Equip.

1979 Roadrunner Hay squeeze, 2 stage, excellent condition, always shedded, \$59,500. Rickreall, OR. 503-930-1904

New Holland H8080 Swather: with 416 rotary header. Field ready. Excellent condition, 68,000. Jefferson, OR. 541-327-1645



Hesston 4790 cutter baler, 3x4 bales, approx 70,000 bales. New computer and tires last year, \$12,000. Eastern Oregon 541-823-2769



New Hay Squeeze built on a 1999 Ford Sterling frame, CAT engine, Allison 3060 Automatic transmission, Air ride cab, new air seats, New hydraulic system, new squeeze head, lifts 14'10". Licensed for highway, clean title in hand \$65,000. Paragonah, UT. 435-590-5446

HAY EQUIPMENT SALE

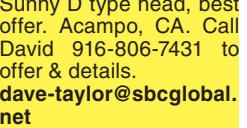
SALE ENDS SOON
New Holland 1118, 14' header, 2,465 hours, 1 owner, \$10,500. New Holland 2550, cab, 14' swather, 5243 hours, \$14,500. New Holland 2550, cab, 14' haybine, very clean, new motor, pump & trans, \$23,000. Darf 917W hydraulic hay rakes, good condition, \$9,000. Golden Eagle Rake, hydraulic, very little use, best offer. Massey Ferguson 2675, cab, 2wd, 120hp, duals, \$9500. Case 5488, cab, 2wd, duals, 185hp, 6600 hours, \$19,500 OBO. Challenger SP185B, 15' rotary, 2800 hours, Cummins, \$32,000. Kuhn tedder, pto, GF640M, \$9000. Yonker Johnson Border Maker, 3 point, \$8000. Freightliner with set 24' semi flat hay trailers, \$12,000. Hyster Hay Squeeze, gas, Sunny D type head, best offer. Acampo, CA. Call David 916-806-7431 to offer & details. dave-taylor@sbcglobal.net

Big bale pull stacker, 6 bale, \$12,500. Albany, OR. 503-510-7779

Large Supply of Rebuilt New Holland Bale Wagons: Also buying New Holland bale wagons. Sod Busters Sales, Polson, MT. 406-883-2118

917 Orchard/ Vineyard Equip.

2010 Weiss McNair 9800P Hazelnut Harvester with Cart: Herbst Hi/ Lo rear dump cart. Harvester equipped with rear steering wheels. Cart with Herbst Desticker, can dump straight into truck. Excellent condition, \$52,500 for the pair. Silverton, OR. 503-873-4806, 503-510-6239



400 gallon turbo-mist air blast. Very clean, field ready, \$13,500. Silverton, OR. 503-932-0766



2015 New Holland Speedrower 160. Like new condition, only 257 hours, 14' sickle header, \$78,500. Bonners Ferry, ID. 208-946-3220

H-2A LABOR & HOUSING

H-2A Farm Labor & Housing available. Housing starts @ \$10/ day. Yakima - Hermiston Region. AgriLabor - "Labor Where you want it, When you want it!" 541-571-5989 AgriLaborInc.com

911 Hay Equip.

917 Orchard/ Vineyard Equip.



Jessee Machine Works: **NUT HARVESTING EQUIPMENT**
530-342-4379
JesseeMachineWorks.com

2008 SHM all wheel drive, air cab sweeper. 7' head, plus tree row berm brush. 80HP, 4.5L John Deere engine. Excellent Condition, \$37,500. Silverton, OR. 503-873-4806, 503-510-6239



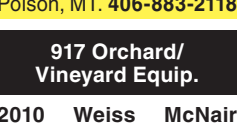
RCO Baits
Gophers • Squirrels
Voles • Moles
Ask for your Capital Press Discount
Dealer Locator
1-800-214-2248
Harrisburg, OR \$159960-

Looking for ORCHARD/ VINEYARD PROPERTY?
Go to Class 570

Capital Press
Empowering Producers of Food & Fiber
CapitalPress.com
\$159454-1

TALLMAN LADDERS

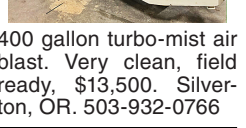
Crafted for Safety, Longevity, Stability and Affordability!



Quality Made in the U.S.A. Since 1954

tallmanladders.com
(541) 386-2733
(800) 354-2733
\$129237-1

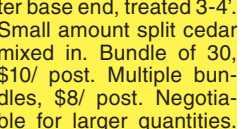
920 Tractors



2015 John Deere 6115 4x4 with 563 loader, 830 hours, 3x3 with shuttle 9 forward and reverse gears, 2 sets of remotes, 4.5 liter turbo diesel tier IV, weighs 14,000. Very nice condition like new. Possible delivery, \$56,500 OBO. Call 541-934-2205 or text 541-604-4654. Dallas or David, Kimberly, OR. 541-934-2205



John Deere 7410, 4068 hours, power quad with left hand reverse, \$35,000 OBO. Eastern Oregon 541-823-2769



2017 Yanmar YT59, 330 hours, 4WD, 59 hp, Bob Cat quick attach, canopy, hydraulics front & Back, \$28,900 OBO. Junction City, OR. 541-915-3174

1980 Versatile 875: good clean tractor, lots of work history, 20.8-38 tires, 4 valve hydraulics, no slip front differential, 11,589 hours, \$12,000 OBO. Uniontown, WA. 509-229-3747, 509-597-7850

John Deere 6420; 4600 hours. John Deere 7130; 2658 hours. John Deere 5055E; 850 hours. All with loaders. Bellingham, WA. 360-961-5877

NEW YEAR'S DEADLINES

For January 3rd Issue:
News Display & Legal Ads - Friday, Dec. 27th @ 3PM
Class Display - Monday, Dec. 30th @ 5PM
Class Liners - Monday, Dec. 30th @ 5PM

1-800-882-6789
www.capitalpress.com

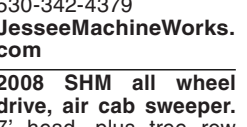
Capital Press
Empowering Producers of Food & Fiber
\$159481-1

907 Nursery Equip. & Supplies

920 Tractors



2009 CASE Puma 115: 1900 hours, very good condition, creeper transmission, duals, 80% rubber, A/C, \$55,000. Prineville, OR. 541-233-3771



1938 John Deere Model "D." Runs Good. In original condition, \$6650. Nampa, ID. 208-870-5787



John Deere 8285R, MFD, large flotation tires, IVT transmission, \$139,000. Sublimity, OR. Call or text 503-932-9934



Case IH Steiger 450 tractor, 3509 hours, deluxe cab, 4 remotes, 2000 lb front end weights, 8 710-70R38 tires with 75% tread, \$149,000. Salem, OR. 503-580-4261

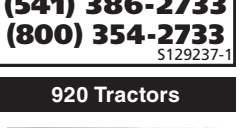
1994 John Deere 4560, MFD, excellent condition, new engine, \$54,500. Rickreall, OR. 503-930-1904

Attention: Wanted Kubota or John Deere, 4x4 compact tractor with loader/equipment. Carlton, OR. 503-550-0094

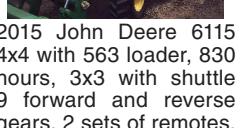
John Deere 7800: runs excellent, 8700 hours, \$30,000. Jefferson, OR. 541-327-1645



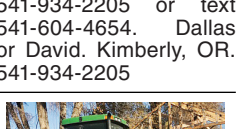
2018 Kubota M6H-101 Mudder-high crop tractor, 108 hours, 104 HP, MFWD, 2 remotes, 25.8" clearance, Creeper gears, 540 PTO, canopy, front weights. Still under factory warranty, \$55,000. Scappoose, OR. 503-432-1717



John Deere 9530T, 36" racks, 4084 hours, 3 point and swinging drawbar, 4 remotes, radar, autotrack ready, \$145,000 OBO. Sublimity, OR. 503-932-9934



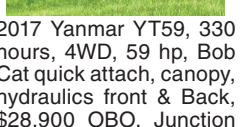
New Idea 217 Manure Spreader PTO Drive, Dual Beater, Works Great \$2750



Kubota 900 RTV Rebuilt Diesel Engine, 3 Speed Hydro, 4 wd \$6000



New Holland 1530 4 wd, Hydro, Bradco Backhoe, Hrs 1869 \$12,500

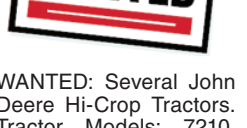


Toyota Forklift 8000 lbs, LPG, 68" Carriage, 48" Forks, Duals \$5000

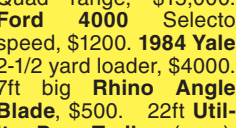
www.meridianeq.com
360-398-2141 • Bellingham, WA

WESTERN TRAILERS

WWW.WESTERNTRAILER.COM
ALL TRAILERS IN STOCK & READY FOR DELIVERY!



2014 '36 & 18' AG 45 Hopper Set, Spring Ride, Alum. Wheels. \$57,500



2006 48' Western Super Van, Hard Top, Air Ride, Alum. Wheels, Air Scales. \$22,000



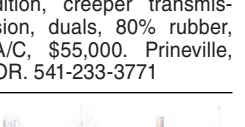
2014 53' Unity Reefer, Carrier Unit, Air Ride, Alum. Wheels, New Tires. \$38,500

NEW 2020 53' Tri-Axle Muv-All folding tail equipment trailer. \$72,246 F.E.T. Inc, FOB Boise, ID

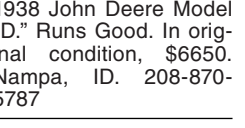
923 Farm Equipment



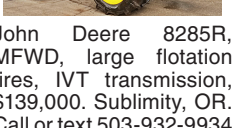
2002 Kubota 9000 Mudder tractor with cab, 2900 hours, 4 speed, H-L and Creep gear, dual auxiliary hyd, \$26,900. Newberg, OR. Dennis 503-537-4297



2017 Yanmar YT59, 330 hours, 4WD, 59 hp, Bob Cat quick attach, canopy, hydraulics front & Back, \$28,900 OBO. Junction City, OR. 541-915-3174



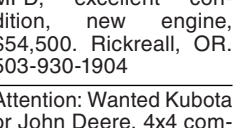
1980 Versatile 875: good clean tractor, lots of work history, 20.8-38 tires, 4 valve hydraulics, no slip front differential, 11,589 hours, \$12,000 OBO. Uniontown, WA. 509-229-3747, 509-597-7850



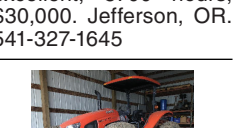
John Deere 6420; 4600 hours. John Deere 7130; 2658 hours. John Deere 5055E; 850 hours. All with loaders. Bellingham, WA. 360-961-5877

REWARD!

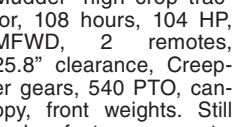
REWARD OFFERED for information that leads to the recovery of 1997 F350 LIC: VZG048; Vin: 3FTHF36F9VMA72057. Call 541-576-2440 or 541-480-3371



Massey Ferguson 451, 4WD, 52hp, bale spears for round and large square bales, 2 remotes, only 850 actual hours, 1050 large bucket, \$19,500. Eagle Creek, OR. 503-637-6619



2002 Kubota 9000 Mudder tractor with cab, 2900 hours, 4 speed, H-L and Creep gear, dual auxiliary hyd, \$26,900. Newberg, OR. Dennis 503-537-4297



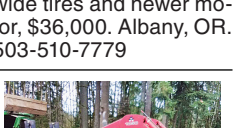
John Deere 329D compact track loader. New tracks, rollers, sprockets. 3429 hours, \$28,500. Woodburn, OR. Call/text Greg 503-969-8705



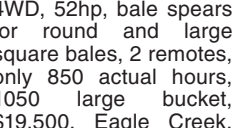
John Deere 329D compact track loader. New tracks, rollers, sprockets. 3429 hours, \$28,500. Woodburn, OR. Call/text Greg 503-969-8705



John Deere 329D compact track loader. New tracks, rollers, sprockets. 3429 hours, \$28,500. Woodburn, OR. Call/text Greg 503-969-8705



John Deere 329D compact track loader. New tracks, rollers, sprockets. 3429 hours, \$28,500. Woodburn, OR. Call/text Greg 503-969-8705



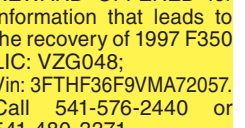
John Deere 329D compact track loader. New tracks, rollers, sprockets. 3429 hours, \$28,500. Woodburn, OR. Call/text Greg 503-969-8705



John Deere 329D compact track loader. New tracks, rollers, sprockets. 3429 hours, \$28,500. Woodburn, OR. Call/text Greg 503-969-8705



John Deere 329D compact track loader. New tracks, rollers, sprockets. 3429 hours, \$28,500. Woodburn, OR. Call/text Greg 503-969-8705



John Deere 329D compact track loader. New tracks, rollers, sprockets. 3429 hours, \$28,500. Woodburn, OR. Call/text Greg 503-969-8705



John Deere 329D compact track loader. New tracks, rollers, sprockets. 3429 hours, \$28,500. Woodburn, OR. Call/text Greg 503-969-8705

Capital Press
EMPOWERING PRODUCERS OF FOOD & FIBER
twitter.com/capitalpress
@capitalpress

Oregon Valley Greenhouses Inc.
503-678-2700

ALSO OFFERING
SHADE CXLOTH POLY CARBONATE POLY GROUND COVER
CIRCULATIN FANS WIRE LOCK
ROLL-UP SIDES HEATERS
EXHAUST FANS CODE STRUCTURES
GUTTER CONNECTS CUSTOM SIZES

3.2 oz Ground Cover
3 x 300 \$62.00
6 x 300 \$112.00
12 x 300 \$199.00
15 x 300 \$279.00
prices good thru 12/31/19

BUILDERS OF QUALITY GREENHOUSES AND STRUCTURES
20357 Hwy 99 E • Aurora, OR 97002 • info@ovg.com • www.ovg.com

WANTED

Several John Deere Hi-Crop Tractors. Tractor Models: 7210, 7410, 7420, 7330 with creeper transmission. 503-719-2545

1980 John Deere 4640: Quad range, \$15,000. Ford 4000 Selecto speed, \$1200. 1984 Yale 2-1/2 yard loader, \$4000. 7ft big Rhino Angle Blade, \$500. 22ft Utility Pup Trailer (poor), \$500. Madras, OR. 541-480-2740

REWARD!

REWARD OFFERED for information that leads to the recovery of 1997 F350 LIC: VZG048; Vin: 3FTHF36F9VMA72057. Call 541-576-2440 or 541-480-3371

Western STORAGE TRAILERS
1-800-OK-2-RENT
Rent or Sale
Containers and Trailers

CONTAINERS: 20' & 40'
TRAILERS: 27', 40', 45' & 48'

Western Mobile Storage
1-800-652-7368 • 541-342-1835
Eugene, OR \$114471-1

NEW YEAR'S DEADLINES

For January 3rd Issue:
News Display & Legal Ads - Friday, Dec. 27th @ 3PM
Class Display - Monday, Dec. 30th @ 5PM
Class Liners - Monday, Dec. 30th @ 5PM

1-800-882-6789
www.capitalpress.com

Capital Press
EMPOWERING PRODUCERS OF FOOD & FIBER
\$159488-1

FARM & HOME SUPPLY
1-888-643-3395 • 509-843-3395
www.fhssupply.com Pomeroy, WA

2015 Case IH 8240H Combine, Hilco leveler, 2015 MacDon 40' draper header, 1500 Sep. hrs \$375,750
NEW Case IH 580 Quadtrac, PTO, Eng. Brake, 36" tracks.....CALL
'08 Case IH 435 HD Steiger, triples, PTO.....\$127,750
New Great Plains 3000 Turbo Max/Harrow.....CALL
New Great Plains 3010 No-Till Drill 7.5" spacing..CALL
Great Plains 36" Folding DDisk Drill, 7" spacing \$12,500 OBO
28' Donahue Machine Trailer.....\$2,500
'89 JD 7722 Combine, 25' header \$17,500
Case IH 3020 Header, nice cart.....\$15,500
Wil-Rich 2900-10 10-Bottom Plow, good cond., 18" shares.....\$12,950

CASE IH AGRICULTURE \$159414-1

MERIDIAN EQUIPMENT
Serving the Pacific Northwest Since 1973

New Idea 217 Manure Spreader PTO Drive, Dual Beater, Works Great \$2750
Kubota 900 RTV Rebuilt Diesel Engine, 3 Speed Hydro, 4 wd \$6000
New Holland 1530 4 wd, Hydro, Bradco Backhoe, Hrs 1869 \$12,500
Toyota Forklift 8000 lbs, LPG, 68" Carriage, 48" Forks, Duals \$5000