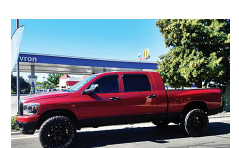


210 Trucks



2006 Ford F750 18' steel flatbed, D ring tie downs, CAT C7, 7 speed manual, 33k GVW. Only 90k miles, \$19,900. White City, OR. 541-499-8723

210 Trucks



2006 RAM 2500 Mega Cab SLT 4x4, 5.9L Cummins diesel with TWIN Turbos, 184,386 miles. Many performance upgrades, \$23,900 OBO. Boise, ID. 208-388-2138

210 Trucks



1999 Peterbilt 377, N14 Cummins Celec Plus 435HP (red top), 13 speed, wet kit, 210" wheelbase, set back axle, 608k miles, \$25,000. White City, OR. 541-499-8723

210 Trucks



1994 Mack E7-400: 18 speed, new radiator, transmission, differential, hood, etc. 2012 KND silage trailer, 36', beaters, gate, \$72,000 Outlook, WA. 509-840-5511

211 Pickups



REWARD!
REWARD OFFERED for information that leads to the recovery of 1997 F350 LIC: VZG048; Vin: 3FTHF36F9VMA72057. Call 541-576-2440 or 541-480-3371

222 Truck/ Auto Parts & Accessories

Looking for a farm or ranch? VISIT **FarmSeller.com**

222 Truck/ Auto Parts & Accessories

CUSTOM FABRICATION
We can meet your needs!
541-447-4555
PRO-LINE FABRICATION
Prineville, OR 97134-1741

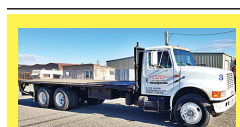
228 Tires & Wheels



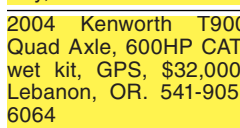
(4) Unused 48x25-20, 10 ply, \$950 each. Gresham, OR. Tim 503-719-2545



1993 GMC 1 ton garbage truck, Wayne Hi-Lift 8 yard compactor, low hours, \$13,500. Tualatin, OR. 503-260-0303



1992 International 4900 6x4, DT466 engine with 126k miles, 8LL, 24' steel flatbed, 46k gvw, air brakes, \$7000. White City, OR. 541-499-8723



2004 Kenworth T900 Quad Axle, 600HP CAT, wet kit, GPS, \$32,000. Lebanon, OR. 541-905-6064



2005 GMC T-7500 24' box van, Allison, Isuzu, non CDL, \$11,500. Aurora, OR. 503-504-1881



1991 IHC 9300 semi-tractor. 3406B CAT Diesel. 425 HP. RTLO 13 SPEED PS, AC, JAKE. 80% Rubber. Hendrickson spring. 234K. ACTUAL MILES. Lots of nice aluminum boxes and rack. One owner former Govt. Absolutely immaculate. \$19,900. Located in Twin Falls ID. Call 208-613-0050



1994 AutoCar White GMC tandem axle tractor. 133,000 ACTUAL Miles. N14 Cummins, 410 HP. RTLO 13 speed. Jake, PS, AC. Hedrickson rears. One owner ex-GOVT. 80% rubber. In near new condition. \$21,900. Located in Twin Falls ID. 208-613-0050



1992 International 6300 Navistar single axle truck, Cummins L6 engine, 9 speed manual, spring suspension, 481,524 miles, tires 90% or better. Great for hauling short seed trailers. Good condition. Previous Dept Corrections truck, \$9500. Sublimity, OR. 503-949-3065 text or call



1989 Ford L9000 with Cat 3406B, 425HP and 14-6-13 transmission. Retarder, PS. Power mirrors. Nearly new 11R22.5 Radial Tires. Hendrickson spring rears. Nice aluminum tool boxes. 149,000 ACTUAL MILES. One owner former Municipal Fire Dept truck that is in near new condition. Runs and drives the same way. Beautiful truck. \$19,900. Located in Twin Falls ID. Call 208-613-0050



2013 RAM 3500 Crew Cab Dually, 6.7 turbo diesel, 146,667 miles. Loaded with all the options, \$35,900. Boise, ID. 208-388-2138



2005 Sterling CO with 24 ft. box van. 3500 lb. liftgate. Cummins 5.9 Diesel, Allison 6 speed auto transmission. PS, AC, CC. 80% 11R22.5 tires. Air lift tag axle. Very clean and well maintained truck from a Federal Agency, \$9900. Located in Twin Falls ID. Call 208-613-0050

DORNGOODDEAL.COM

2001 FORD F-450 SUPER DUTY 2WD, V10, auto, air, am/fm, utility box, 182k towing package...**\$7,995**

2004 FORD F-450 4X4 CREW CAB 12' FLATBED, V10, Auto, Air cond, 15,000 GVWR, only 38k actual miles.....**\$22,995**

2000 FORD F-350 DUMP, Crew Cab, V10 and runs on gas or natural gas, Auto, AC, only 95k actual miles.....**\$15,500**

2008 FORD F-350 XL 4X4 EXTENDED CAB PICKUP 4-DR with 6.8L V10, 11' SERVICE BODY, dual remote spot lights, 100 gallon diesel service tank with 20 gal. per minute pump, AC, PS, PB, Automatic, 71k actual miles.....**\$19,850**

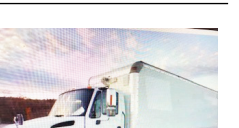
2005 ISUZU NQR 18' VAN 5.2L 4cyl Diesel, auto, air, power windows and locks, 112k actual miles, 17,500lb GVWR.....**\$16,995**

Come see us soon or call Mike Dorn or John Dorn. We would love to hear from you today! (If you don't like talking to John, just ask for Mike.)

DORN BROS. TRUCK SALES, Inc.
SINCE 1947
(503) 585-4731
3130 PORTLAND RD. • SALEM, OR
Prices good for 1 week from publication date.



2005 Ford 750, 4 door, 115,000 miles, 14' flatbed with gooseneck hitch, air brakes, \$16,500. Oxbow, OR. 541-785-3352



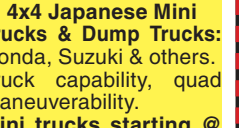
2005 IHC 4400 with 20' box van with 3500 lb. liftgate. DT 466 Diesel with Allison AT. A/C, PS, CC. Very clean and well maintained one owner former Government truck. Runs, look, and drives like new, \$10,900. Located in Twin Falls, ID. Call 208-613-0050

211 Pickups

#1 Pickups: Used Power Stroke & Dodge Diesel 4x4. Call about great tax advantages! Wallowa, OR. 541-569-2352



4x4 Japanese Mini Trucks & Dump Trucks: Honda, Suzuki & others. Truck capability, quad maneuverability. Mini trucks starting @ \$3995. Portland, OR. 503-805-2684 www.oregondieselimports.com



4x4 Japanese Mini Trucks & Dump Trucks: Honda, Suzuki & others. Truck capability, quad maneuverability. Mini trucks starting @ \$3995. Portland, OR. 503-805-2684 www.oregondieselimports.com

219 ATVs/Motorcycles



4x4 Japanese Mini Trucks & Dump Trucks: Honda, Suzuki & others. Truck capability, quad maneuverability. Mini trucks starting @ \$3995. Portland, OR. 503-805-2684 www.oregondieselimports.com

210 Trucks

210 Trucks

EVERYTHING YOU NEED To Keep Your Truck Moving

Hagerman, Inc.
Sales • Service • New & Used Parts

Truck Shop

- Large Inventory of 600+ Salvage Trucks with Most Parts Readily Available
- Get Your Truck On the Road Faster for Less Out of Pocket Cost
- Full Service, DOT Inspections, Service/Road Calls, etc.
- Tractor & Trailer Repairs – Both Minor & Major

Gear Shop

- Repair, Rebuild, or Exchange
- Transmissions, Differentials – Front & Rear, etc.
- 300+ Inventory of all Makes & Models
- Used Engines Available
- 90 Day Warranty (major components)

Surplus

- Two Warehouses Full of New Surplus Parts - Aftermarket & OEM
- Hoods, Mirrors, Headlights, Wide Variety of Seats & Much More

Tire Shop

- New & Salvage Tires & Wheels
- Flat Repair
- Service/Road Calls

Come see us today or go online to view our inventory!

"One of Oregon's Largest Heavy-Duty Wrecking Yards" www.hagermanparts.com

Free Weekly Pickup/Deliveries: Portland, La Grande, & Bend, OR

For New Parts on Hand or Used Parts Delivered Weekly from Umatilla, Visit Us In Portland.

Two Locations For Your Convenience

82891 Bud Draper Dr.
Umatilla, OR
541-922-6455

7100 NE Columbia Blvd.
Portland, OR
503-289-0637

Mon-Thurs: 6am - 5pm
Friday: 6am - 4:30pm

Se Habla Espanol

WANTED: TRUCKS
We Buy & Sell Used Trucks
RUNNING OR NOT!
Contact Neil : 503-521-6935
neil@hagermanparts.com

TILT TRAILERS

2020 PJ TRAILER TILT T620

- 83"x20'
- 16' tilt
- 4' stationary
- 14k GVWR
- 2x6 treated pine deck
- Black powder coat

STK #1316674
STANDARD PRICE \$7,195
SPECIAL \$6,800
CASH/CHECK

8' to 16' Lengths
5200# to 16k GVWR

Please call on other trailers & options. **MULTIPLE TRAILERS ON SALE!**
ALL TRAILERS GET .5% TAX & \$50 DOC FEE AT THE TIME OF SALE.

GR Trailers, **EBY**, **GREAT NORTHERN TRAILER WORKS**, **PACE**, **LOOK Trailers**, **PJ TRAILERS**

Diamond Sales
Your All Service Dealer
Halsey, OR
450 UNITS ON OUR LOT!
541-369-2755 • 541-740-5135 • View our inventory at: diamondksales.com

We deliver your message to the West's Ag Audience, wherever they are!

- Newspaper
- E-Editions
- Mobile
- Websites
- Flyers
- Custom Publications

219 ATVs/Motorcycles

2019 TRX420TM RANCHER

- BIG RACKS • 5 SPEED MANUAL TRANS
- FUEL INJECTION • LIQUID COOLED
- 12 MONTH WARRANTY

SALE PRICE \$4,949
MSRP \$5,349

TAYLOR honda sports
YOUR AUTHORIZED FULL-SERVICE DEALER
Serving Farms & Ranches for 55 Years - 1964-2019

ST#00762

TONS OF ACCESSORIES • EASY FINANCING • FULL SERVICE DEALERSHIP
Complete Line of Honda ATVs

2140 N. Pacific Hwy. 99E • Woodburn, OR • Open 8-6 Tues-Sat.
(503) 981-1813 • 800-981-1813 • www.taylormotorcycles.com

honda.com UTILITY ATVs ARE RECOMMENDED ONLY FOR RIDERS 16 YEARS OF AGE AND OLDER. ATVs CAN BE HAZARDOUS TO OPERATE. FOR YOUR SAFETY, BE RESPONSIBLE. READ THE OWNER'S MANUAL. ALWAYS WEAR A HELMET, EYE PROTECTION, AND PROTECTIVE CLOTHING. BE CAREFUL ON DIFFICULT TERRAIN. ALL ATV RIDERS SHOULD TAKE A TRAINING COURSE (FREE FOR NEW BUYERS. ASK YOUR DEALER OR CALL ASI AT 800-887-2887). NEVER RIDE UNDER THE INFLUENCE OF DRUGS OR ALCOHOL, ON PAVED SURFACES, ON PUBLIC ROADS, WITH PASSENGERS, OR AT EXCESSIVE SPEEDS. NO STUNT RIDING. RESPECT THE ENVIRONMENT WHEN RIDING. TRX® is a registered trademark of Honda Motor Co., Ltd. (12/17) *M.S.R.P. does not include \$400 in destination charges. Visit powersports.honda.com to view applicable destination charge amount.

Call today to advertise.

Capital Press
EMPOWERING PRODUCERS OF FOOD & FIBER

800-882-6789
or go to CapitalPress.com