

# Don't Miss Another Issue of Capital Press!

Stay up to date on the latest agricultural and natural resources news.

ANYTIME ANYWHERE

1 year \$55

2 years \$100

EZ Pay \$4 month



SUBSCRIBE TODAY!



1-800-781-3214  
CapitalPress.com

### 887 Irrigation Equip.

WANTED to buy or lease in Marion County, Oregon. Surface Water Right from the Pudding River or a tributary thereof. Any acreage considered. 503-710-7579

WANTED: 6" ringlock aluminum irrigation pipe with valves. Oregon 503-710-7579



Westinghouse IRRIGATION/ HYDRANT PUMP assembly: 100hp, 480/277v, 3ph 1500 gpm, 150"Lx55"Wx45"H, soft start controller/ panel, \$6400 OBO. Ferndale, WA. 360-380-2907

WANTED: irrigation main line, 5", 6" and 8" supply hydrants. Wade rain and/or Ringlock. Salem or surrounding area, OR. 503-437-4833

Drip Tube: .26gph at 30" centers, 350 rolls, \$75 per roll. Lafayette, OR. 503-437-4833

(3) 1/4 mile wheel lines with newer movers, (1) 4", (2) 5", \$6000 for all. Toppenish, WA. Call/Text 509-840-2488

Pivots: Good, various lengths, all brands & late models. No rust. Plus buried wire. Call Keizer, OR. Cell 503-881-3232, 503-390-3210

**H Pipe & Supply**  
Specializing in  
• Drip Irrigation  
• Filtration • Design  
598 Baseline, Cornelius, OR  
(503) 357-4217  
www.hpspipe.com

**IRRIGATION EQUIPMENT**  
BOUGHT. SOLD. RENTAL.  
Design of Effluent Handling Systems  
- Gates, Valves & Aerators  
**New & Used Parts**  
• Aluminum Pipe • Certa-lok  
• Siphon Tubes • HDPE  
• Sand Media Filters  
• Wheel Lines • Pumps  
**PACIFIC SOUTHWEST IRRIGATION**  
Office: (209) 460-0450  
Fax: (209) 982-1832  
www.pacsouthwestirr.com  
Carlos (209) 481-7677  
Jim (209) 986-0099



**ADVERTISING IN CAPITAL PRESS IS A CASH COW!**  
CALL TODAY TO PLACE YOUR AD  
1-800-882-6789  
FAX (503) 370-4383  
CapitalPress.com

### 899 Heavy & Indust. Eq.



Because of Thanksgiving holiday, our ad deadlines for the November 29th, 2019 issue must move ahead to:  
News Display & Legals  
**DEADLINE MON., NOV. 25TH at 3PM**  
Classified Display Ads  
**DEADLINE TUES., NOV. 26TH at 5PM**  
Classified Line Ads  
**DEADLINE TUES., NOV. 26TH at 5PM**

**Capital Press**  
EMPOWERING PRODUCERS OF FOOD & FIBER  
1-800-882-6789 • CapitalPress.com

### 887 Irrigation Equip.

(24) 8"x30" wade rain mainline, \$100 each. Sherwood, OR. 503-550-9925

(5) 1200' long wheel lines with hydraulic movers. levelers. Good shape, used this season, \$4500 each. Pasco, WA. 509-539-1054

(5) 1/4 mile Wheel Lines, good or new motors, \$3500 each. Madras, OR. 503-508-7511



**IRRIGATION EQUIPMENT:**  
(14) Used 1/4 mile wheel lines, 5hp Gheen single frame field king 6', 5hp Gheen dual frame ranch king 5', 8hp Travis single frame 5', 4" & 5" pipe, \$6500 each. Various mover frames also available. Dixon, CA. 800-734-8859

(70) Used Pivots: Engines, pumps. Garden Valley, ID. Call Mike at 208-420-1480, or see www.pivotsplus.com

### 893 Logging Equip.



2002 Kenworth W900L: C15 CAT engine, RTLO 189-18, D463P 4:11 rears, Chalmers suspension, 260"WB, 8'6" bunks, 3/8" steel frame, 350,300 miles, electric scales. Whit-Log Trailer with electric scales, \$59,900. Eugene, OR. Call/text 541-968-2239

### 896 Forklifts



2015 Hoist P330 forklift, 33,000 lb capacity, 4450 hours, 6' forks hydraulic fork positioners. Side Shift, 2 stage mast, Cummins 3 speed auto, pneumatic tires, \$72,000. Gaston, OR. 503-789-3726

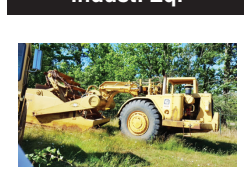


2005 John Deere 3420 4x4 Telescopic forklift with bucket, enclosed cab. NICE, \$39,500. Wilsonville, OR. 503-260-0303



Hyster H200 HS: 1989, 20K capacity, 4 control valves, 182" upright, 2 stage, 3 speed, automatic monotrol, Perkins diesel, side shift, good brakes, no leaks, 6' forks, full width carriage, e-brake. Runs Good! Hay Squeeze? \$20,000. Gaston, OR. 503-789-3726

### 899 Heavy & Indust. Eq.



CAT 623-B: Self-loading scraper, good condition, Reduced \$29,500. Salem, OR. 503-362-3055

### 899 Heavy & Indust. Eq.

**CAT D4D:** straight blade, hydraulic tilt, power shift, free spool winch, arch, pin-on brush rake. Ex-government, \$28,500. Myrtle Creek, OR. 541-863-6968

**CAT D5B:** straight blade, hydraulic tilt, power shift, winch, low hours. Ex-government, \$35,500. Myrtle Creek, OR. 541-863-6968

2005 Hitachi ZX 135 Excavator, 2 Buckets, Quick Change, Thumb, 4,400 Hours, \$44,950. Sandy, OR. Call Pat 503-407-9062

### REPLACEMENT DECAL SETS

Construction, Forestry & Ag Equipment. Fast, Knowledgeable, Reliable Service. 215-536-5339 email: info@CustomServicesCompany.com  
Thousands of sets, Old & New, in our digital inventory. [www.QuipCal.com](http://www.QuipCal.com)



1978 International S-10 Skidder: new rings and liners, injection pump rebuilt, injectors reconditioned, last serviced 3/18. Includes one set of chains, \$15,000. Council, ID. 208-741-0321



2002 Sullair 185 CFM air compressor. John Deere Diesel. Trailer mounted. 2400 ACTUAL HOURS Clean one owner, well maintained. Runs and operates properly, \$6900. Twin Falls ID. Call 208-613-0050



John Deere 210 LE Skip Loader. 4X4. Ripper. 4 in 1, \$26,500. Sandy, OR. Call Pat 503-407-9062

12G Road Grader, push block, rear rippers. Good shape, recent motor rebuild, \$35,000. Yakima, WA. 509-949-2065



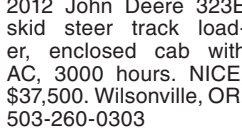
2010 Cat 307d, 3500 hours, 2 buckets, blades, \$47,000. 2016 John Deere 85G excavator, hydraulic thumb, \$80,000. Silverton, OR. 503-932-0766



2010 Cat 307d, 3500 hours, 2 buckets, blades, \$47,000. 2016 John Deere 85G excavator, hydraulic thumb, \$80,000. Silverton, OR. 503-932-0766

### D-6 H U-dozer with tilt and ripper, near new engine and hydraulic pump.

\$79,500. Salem, OR. 503-362-3055



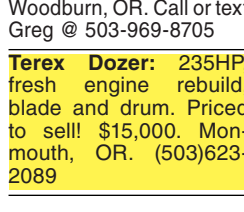
2012 John Deere 323E skid steer track loader, enclosed cab with AC, 3000 hours. NICE, \$37,500. Wilsonville, OR. 503-260-0303

### 899 Heavy & Indust. Eq.

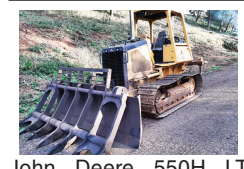


John Deere 329 D compact track loader: one owner, 3429 hours. New tracks, rollers & sprockets. Nice machine, ready to go. Asking \$31,500. Woodburn, OR. Call or text Greg @ 503-969-8705

**Terex Dozer:** 235HP fresh engine rebuild, blade and drum. Priced to sell! \$15,000. Monmouth, OR. (503)623-2089



Good shape, runs well, articulating road grader, front scarifier, powershift transmission. Recently did full service, \$35,000. Pasco, WA. 509-438-8402



John Deere 550H LT Dozer. 6 way blade. Ripper. CWS brush rake. 2,300 hours, \$49,500. Sandy, OR. Call Pat 503-407-9062

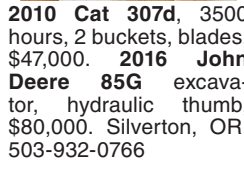


John Deere 210 LE Skip Loader. 4X4. Ripper. 4 in 1, \$26,500. Sandy, OR. Call Pat 503-407-9062



John Deere 210 LE Skip Loader. 4X4. Ripper. 4 in 1, \$26,500. Sandy, OR. Call Pat 503-407-9062

### 902 Farm Equip. Parts

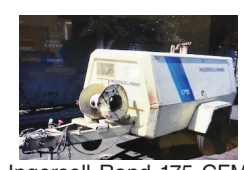


2010 Cat 307d, 3500 hours, 2 buckets, blades, \$47,000. 2016 John Deere 85G excavator, hydraulic thumb, \$80,000. Silverton, OR. 503-932-0766

### 902 Farm Equip. Parts

2010 Cat 307d, 3500 hours, 2 buckets, blades, \$47,000. 2016 John Deere 85G excavator, hydraulic thumb, \$80,000. Silverton, OR. 503-932-0766

### 899 Heavy & Indust. Eq.



Ingersoll Rand 175 CFM air compressor. 999 HOURS. Gas. Trailer mounted. Good tires. Well maintained one owner machine, \$5900. Located in Twin Falls ID. Call 208-613-0050

**CASE INDUSTRIAL PARTS**  
We sell genuine, after market, and used CASE parts at discount prices nationwide. Call For Free Catalog.

**CENTRAL EQUIPMENT**  
AFTER MARKET & USED PARTS  
Medford, OR  
(888) 593-8749



**1986 JOHN DEERE HOE CK0490**  
w/ Bucket & Thumb  
Recent 4-239 Engine  
30,000# Machine  
**\$24,500**  
509-535-1661  
or Jim at 509-991-9473  
713 N Cook, Spokane WA 5153337-1

### 907 Nursery Equip. & Supplies

**FRESH SAWDUST:** Consistently fair pricing. 9 Unit Loads Now Available Forest-Grove, OR. For pricing call 503-849-0216



HAYGROVE Tunnel Hoops: Extend your growing season, control your growing environment! Post spacing: 11ft. Length: 33' spacing; height: 33' leg rows, 7' height, diagonal pipe in-kit. Used 6 mil single layer plastic film available. Call for Pricing: 503-793-1925. Cornelius, OR.

**USED NURSERY CONTAINERS:** Used, but reusable nursery containers. All sizes. Inventory changes daily. Call for current availability and prices. Sawyer Farms, Scio OR. 503-769-3417, juddsfarm@wvi.com (also wanted: used containers)

**HAY EQUIPMENT**  
HAY EQUIPMENT:  
(2) 2009 New Holland BB9080 3X4 balers with scales, 44K & 49K bale counts, price starting at \$40,000.  
2013 Massey Ferguson 2170XD 3X4 baler with scales, 45K bale count, \$60,000.  
2013 Mil-Stak PT/2012 large bale stacker, 12 bale table, 120K bale count, \$70,000.  
(2) Fella rotary rakes: 21' & 24.6' wide, \$8,500 and \$14,000.  
2010 Massey Ferguson rotary rake, 24.6' wide, \$16,000.  
All equipment stored inside. St. Paul, OR. 503-800-1448

### 902 Farm Equip. Parts

2010 Cat 307d, 3500 hours, 2 buckets, blades, \$47,000. 2016 John Deere 85G excavator, hydraulic thumb, \$80,000. Silverton, OR. 503-932-0766

### 902 Farm Equip. Parts

2010 Cat 307d, 3500 hours, 2 buckets, blades, \$47,000. 2016 John Deere 85G excavator, hydraulic thumb, \$80,000. Silverton, OR. 503-932-0766

### 911 Hay Equip.

## H-2A LABOR & HOUSING

H-2A Farm Labor & Housing available. Housing starts @ \$10/ day. Yakima - Hermiston Region. AgriLabor - "Labor Where you want it!" 541-571-5989 AgriLaborInc.com

**New Holland H8080 Swather:** with 416 rotary header. Field ready. Excellent condition, 68,000. Jefferson, OR. 541-327-1645



Big Bale Hemp or Hay Grinder: excellent condition, \$5000. Wilsonville, OR. 503-806-7536

4 - NH BB900 Balers, 1 -NH 216 Rake. One owner maintained and rebuilt every season. Service info available. Salem, OR. 503-910-4010

WANTED: 4655 Hesston baler in good condition. FOR SALE: Allan 8803 basket rake, \$11,500 or trade. Deer Park, WA. 509-994-9520



Hustler Bale Feeder CHX5000: Demo-unit, trailed, hydraulic, 5' wide table, big square or round bales. List \$19,390, Special price, \$16,500. Yakima Implement 800-572-2239, WA. yakimple@qwestoffice.net

Freeman 5300 Big Bale Wagon, \$65,000. 2 Kroene 1290 balers, 3x4, \$60,000 or \$50,000. New Holland BW28, Mil-stak and 3 tie attachments, \$115,000. Silver Lake, OR. 541-480-3371

### HAY EQUIPMENT

HAY EQUIPMENT:  
(2) 2009 New Holland BB9080 3X4 balers with scales, 44K & 49K bale counts, price starting at \$40,000.

2013 Massey Ferguson 2170XD 3X4 baler with scales, 45K bale count, \$60,000.  
2013 Mil-Stak PT/2012 large bale stacker, 12 bale table, 120K bale count, \$70,000.  
(2) Fella rotary rakes: 21' & 24.6' wide, \$8,500 and \$14,000.  
2010 Massey Ferguson rotary rake, 24.6' wide, \$16,000.  
All equipment stored inside. St. Paul, OR. 503-800-1448

New And Used Parts: for all models New Holland bale wagons. Largest inventory in North America. Sod Busters Sales, Polson, MT. 877-735-2108 or 406-883-2118

### WANTED

WANTED: 1068 New Holland diesel harrow bed that's been greased, running or not. 541-473-2879



2014 Hesston 2270XD 3x4 baler, 31,192 bales, 500 PTO hours, roller chute, scales, knott-er blower, auto luber, bale ski. Shedded and in excellent condition, \$77,500. Silverton, OR. 503-873-4464. For pictures visit: [www.iokafarms.com](http://www.iokafarms.com)

Hesston 4790 cutter baler, 3x4 bales, approx 70,000 bales. New computer and tires last year, \$12,000. Eastern Oregon 541-823-2769

6' Clover Fluffer, good condition, \$100. Ridgefield, WA. 360-887-3793

Large Supply of Rebuilt New Holland Bale Wagons: Also buying New Holland bale wagons. Sod Busters Sales, Polson, MT. 406-883-2118

#1 Balewagons: Buy, Sell, New Holland 2&3 wide self-propelled, pull-type models, parts, tires, manuals. Caldwell, ID. 208-880-2889 [www.balewagon.com](http://www.balewagon.com)

### RCO Baits

Gophers • Squirrels  
Voles-Moles  
Dealer Locator  
1-800-214-2248  
Harrisburg, OR

### BIG TRACTOR PARTS, INC.

~ GEARED FOR THE FUTURE ~

### STEIGER TRACTOR SPECIALIST

- 1. We are your source for new & used Steiger drivetrain parts Series 1-9300 Series.
- 2. We rebuild Spicer manual transmissions, Fugi power shift transmissions, dropboxes & axle with ONE YEAR WARRANTY!
- 3. We now rebuild computer control boxes for Steiger tractors 1982-1999.

800-982-1769

www.bigtractorparts.com

### NEW, USED, AND REMAN PARTS

TOLL FREE: 1-877-928-1646  
32427 OLD HWY 34, TANGENT, OR 97389

Combine Parts  
Rebuild Kits  
Seats w/Air Suspension \$1,025  
JD 4010, 4020 Clutch Kits \$715  
Reman Engines for Case/IH, John Deere, and Ford  
SALVAGED TRACTORS

Farmland Tractor Supply  
Parts @Farmlandtractor.com

