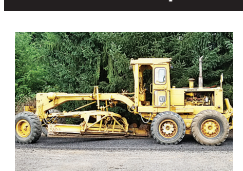


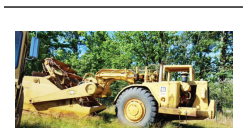
**899 Heavy & Indust. Eq.**



CAT 14E Grader: Ripper, Scarifier, Direct Start, Powershift. \$19,500. Sandy, OR. Pat 503-407-9062

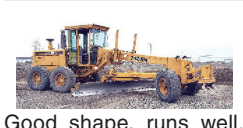
CEC Screen It, 5x12 screen, \$50,000. Pilot Rock, OR. 541-969-8645

John Deere 329 D compact track loader: one owner, 3429 hours. New tracks, rollers & sprockets. Nice machine, ready to go. Asking \$31,500. Woodburn, OR. Call or text Greg @ 503-969-8705



CAT 623-B: Self-loading scraper, good condition, Reduced \$29,500. Salem, OR. 503-362-3055

CAT D4D: straight blade, hydraulic tilt, power shift, free spool winch, arch, pin-on brush rake. Ex-government, \$28,500. Myrtle Creek, OR. 541-863-6968



Good shape, runs well, articulating road grader, front scarifier, powershift transmission. Recently did full service, \$35,000. Pasco, WA. 509-438-8402

**899 Heavy & Indust. Eq.**

CAT D5B: straight blade, hydraulic tilt, power shift, winch, low hours. Ex-government, \$35,500. Myrtle Creek, OR. 541-863-6968

**REPLACEMENT DECAL SETS**  
Construction, Forestry & Ag Equipment. Fast, Knowledgeable, Reliable Service. 215-536-5339  
email: info@CustomServicesCompany.com  
Thousands of sets, Old & New, in our digital inventory. [www.QuipCal.com](http://www.QuipCal.com)

**CASE INDUSTRIAL PARTS**  
We sell genuine, after market, and used CASE parts at discount prices nationwide. Call for Free Catalog.  
**CENTRAL EQUIPMENT**  
AFTER MARKET & USED PARTS  
Medford, OR  
**(888) 593-8749**

**Quality Used EQUIPMENT & ATTACHMENTS**  
• INDUSTRIAL  
• COMMERCIAL  
Please visit our Website [www.amtractor.com](http://www.amtractor.com) for a complete list of Machines and Attachments

**American Tractor**  
Our Toll Free # **888-499-8980**  
Call Cameron Noble or Eric Hunt  
CENTRAL POINT, OR

**902 Farm Equip. Parts**  
Starters, alternators, and generators. Call 503-364-3650 or visit Walz's Rebuilt - 348 Market St. NE., Salem, OR.

**905 Antique Farm Eq. & Parts**

Minneapolis-Moline Collection: ZB, 5 Star, R, U, 445, UTS, Z, H-3 combine. North Plains, OR. 503-310-3538

Massey Ferguson 50: no motor, no wheels, good transmission and rear end, \$350 OBO. Yuba-City CA. 530-370-5749



1950's Farmall H: running when parked 10 years ago. 2nd gear very loose, good condition, \$700. Ridgefield, WA. 360-887-3793, noah\_974@yahoo.com

**907 Nursery Equip. & Supplies**



HAYGROVE Tunnel Hoops: Extend your growing season, control your growing environment! Post spacing: 11ft. Length: 33' spacing; height: 33' leg rows, 7' height, diagonal pipe in-kit. Used 6 mil single layer plastic film available. Call for Pricing: 503-793-1925. Cornelius, OR.

Addco Greenhouse 30'x7x8, corrugated fiberglass, aluminum frame, built-in shelves, central walk. Wired for 110V and 220V, 220V heater, solar blanket, \$3200 OBO. Salem, OR. 503-559-0251

**907 Nursery Equip. & Supplies**

**USED NURSERY CONTAINERS:**  
Used, but reusable nursery containers. All sizes. Inventory changes daily. Call for current availability and prices. Sawyer Farms, Scio OR. 503-769-3417, juddsfarm@wvi.com (also wanted: used containers)

**FRESH SAWDUST:**  
Consistently fair pricing. 9 Unit Loads Now Available Forest-Grove, OR. For pricing call 503-849-0216



New Holland H8080 Swather: with 416 rotary header. Field ready. Excellent condition, 68,000. Jefferson, OR. 541-327-1645

**911 Hay Equip.**  
Large Supply of Rebuilt New Holland Bale Wagons: Also buying New Holland bale wagons. Sod Busters Sales, Polson, MT. 406-883-2118

**Line Classifieds Call Toll-Free 1-800-882-6789**  
FAX: (503) 370-4383  
CapitalPress.com

**911 Hay Equip.**

#1 Balewagons: Buy, Sell, New Holland 2&3 wide self-propelled, pull-type models, parts, tires, manuals. Caldwell, ID. 208-880-2889, www.balewagon.com

**H-2A LABOR & HOUSING**  
Housing starts @ \$10/day, Yakima - Hermiston Region. AgriLabor - "Labor Where you want it, When you want it!" 541-571-5989, AgriLaborInc.com

**New Holland H8080 Swather:** with 416 rotary header. Field ready. Excellent condition, 68,000. Jefferson, OR. 541-327-1645



Big Bale Hemp or Hay Grinder: excellent condition, \$5000. Wilsonville, OR. 503-806-7536

4 - NH BB900 Balers, 1 -NH 216 Rake. One owner maintained and rebuilt every season. Service info available. Salem, OR. 503-910-4010

**WANTED:** 4655 Hesston baler in good condition. FOR SALE: Allan 8803 basket rake, \$11,500 or trade. Deer Park, WA. 509-994-9520

**Hustler Bale Feeder CHX5000:** Demo-unit, trailed, hydraulic, 5' wide table, big square or round bales. List \$19,390, Special price, \$16,500. Yakima Implement 800-572-2239, WA. yakimplete@qwestoffice.net

Freeman 5300 Big Bale Wagon, \$65,000. 2 Krone 1290 balers, 3x4, \$60,000 or \$50,000. New Holland BW28, Mil-stak and 3 tie attachments, \$115,000. Silver Lake, OR. 541-480-3371

**WANTED:** Several John Deere Hi-Crop Tractors. Tractor Models: 7210, 7410, 7420, 7330 with creeper transmission. 503-719-2545

**WANTED:** 1068 New Holland diesel harrow bed that's been greased. 541-473-2879

**917 Orchard/Vineyard Equip.**

2017 Monchiero nut harvester, 220 hours, extra brush, after market blower. 3 year warranty left, \$130,000. Albany, OR. 503-510-7779



John Deere 8970 Wheel Tractor. In nice condition. Shows 3313 hours. Very good 710/70R38 metric tires, 24 speed transmission, differential locks, 3 hydraulic remotes, \$35,000. Genesee, ID. Call or Text 509-336-1995 or 208-669-0397

John Deere 7800: runs excellent, 8700 hours, \$35,000. Jefferson, OR. 541-327-1645

Attention: Wanted Kubota or John Deere, 4x4 compact tractor with loader/equipment. Carlton, OR. 503-550-0094

**1972 International Harvester 454:** 3300 hours, completely refurbished, IH loader, 8 speed, 42HP, dual PTO, new fronts, excellent condition, barn stored, \$8500 Junction-City, OR. 541-998-8060

All parts for IH Model 1806D tractor, ss# 7526S-Y, with loader, Needs new timing gear and put back together. Lakeview, OR. 541-947-3615

**1980 John Deere 4640:** Quad range, \$15,000. Ford 4000 Selecto speed, \$1200. 1984 Yale 2-1/2 yard loader, \$4000. 1969 Kenworth 15 yard dump truck, \$1800. 7ft big Rhino Angle Blade, \$500. 22ft Utility Pup Trailer (poor), \$500. Madras, OR. 541-480-2740

John Deere 7420, MFWD, 4130 hours, 16 speed PQ, 3 SCV's, 90% tires. Much recent work, very clean, \$55,000 OBO. Corvallis, OR. 541-740-0501

**BEST SELLERS** "...Had great results and will definitely use Capital Press again."  
Len St. Claire, Horseshoe Loop, Lebanon, OR  
Call 1-800-882-6789 to advertise.

**RCO Baits**  
Gophers • Squirrels  
Voles • Moles  
Ask for Your Capital Press Discount  
Dealer Locator  
1-800-214-2248  
Harrisburg, OR 512847-1

**Looking for ORCHARD/VINEYARD PROPERTY?**  
Go to Class. 570  
Capital Press  
CapitalPress.com  
598124-1

**TALLMAN LADDERS**  
Crafted for Safety, Longevity, Stability and Affordability!  
Quality Made in the U.S.A. Since 1954  
tallmanladders.com  
(541) 386-2733  
(800) 354-2733  
512929-1

**920 Tractors**  
CASE 9370: runs excellent, n14 Cummins, bare-back, weighted, 4808 hours on tractor less on engine, Jake break, \$66,000 OBO. Albany, OR. 541-619-4720

**Ford Row Crop Tractors:** 4630 and 4610, 60HP, 52HP PTO, \$6500/\$4500. Troutdale, OR. 503-665-1528

**High Clearance:** 5000 Ford, 8 speed, 9.5-24 front, 11.2R48 rear. Rears Pak Tank Sprayer with hydraulic boom, 150 gallon stainless steel, \$6500. Troutdale, OR. 503-320-9732

John Deere 8630 with 50 Series motor, (8) 18.4x38 tires, 70 percent, 3 remotes, 3 point, 1000rpm PTO, \$9000 OBO. Dayton, OR. 503-435-7080

**WANTED:** Several John Deere Hi-Crop Tractors. Tractor Models: 7210, 7410, 7420, 7330 with creeper transmission. 503-719-2545

**WANTED:** Several John Deere Hi-Crop Tractors. Tractor Models: 7210, 7410, 7420, 7330 with creeper transmission. 503-719-2545

**WANTED:** Several John Deere Hi-Crop Tractors. Tractor Models: 7210, 7410, 7420, 7330 with creeper transmission. 503-719-2545

**WANTED:** Several John Deere Hi-Crop Tractors. Tractor Models: 7210, 7410, 7420, 7330 with creeper transmission. 503-719-2545

**WANTED:** Several John Deere Hi-Crop Tractors. Tractor Models: 7210, 7410, 7420, 7330 with creeper transmission. 503-719-2545

**WANTED:** Several John Deere Hi-Crop Tractors. Tractor Models: 7210, 7410, 7420, 7330 with creeper transmission. 503-719-2545

**WANTED:** Several John Deere Hi-Crop Tractors. Tractor Models: 7210, 7410, 7420, 7330 with creeper transmission. 503-719-2545

**920 Tractors**

John Deere 8970 Wheel Tractor. In nice condition. Shows 3313 hours. Very good 710/70R38 metric tires, 24 speed transmission, differential locks, 3 hydraulic remotes, \$35,000. Genesee, ID. Call or Text 509-336-1995 or 208-669-0397

John Deere 7800: runs excellent, 8700 hours, \$35,000. Jefferson, OR. 541-327-1645

Attention: Wanted Kubota or John Deere, 4x4 compact tractor with loader/equipment. Carlton, OR. 503-550-0094

**1972 International Harvester 454:** 3300 hours, completely refurbished, IH loader, 8 speed, 42HP, dual PTO, new fronts, excellent condition, barn stored, \$8500 Junction-City, OR. 541-998-8060

All parts for IH Model 1806D tractor, ss# 7526S-Y, with loader, Needs new timing gear and put back together. Lakeview, OR. 541-947-3615

**1980 John Deere 4640:** Quad range, \$15,000. Ford 4000 Selecto speed, \$1200. 1984 Yale 2-1/2 yard loader, \$4000. 1969 Kenworth 15 yard dump truck, \$1800. 7ft big Rhino Angle Blade, \$500. 22ft Utility Pup Trailer (poor), \$500. Madras, OR. 541-480-2740

John Deere 7420, MFWD, 4130 hours, 16 speed PQ, 3 SCV's, 90% tires. Much recent work, very clean, \$55,000 OBO. Corvallis, OR. 541-740-0501

**BEST SELLERS** "...Had great results and will definitely use Capital Press again."  
Len St. Claire, Horseshoe Loop, Lebanon, OR  
Call 1-800-882-6789 to advertise.

**RCO Baits**  
Gophers • Squirrels  
Voles • Moles  
Ask for Your Capital Press Discount  
Dealer Locator  
1-800-214-2248  
Harrisburg, OR 512847-1

**Looking for ORCHARD/VINEYARD PROPERTY?**  
Go to Class. 570  
Capital Press  
CapitalPress.com  
598124-1

**TALLMAN LADDERS**  
Crafted for Safety, Longevity, Stability and Affordability!  
Quality Made in the U.S.A. Since 1954  
tallmanladders.com  
(541) 386-2733  
(800) 354-2733  
512929-1

**920 Tractors**  
CASE 9370: runs excellent, n14 Cummins, bare-back, weighted, 4808 hours on tractor less on engine, Jake break, \$66,000 OBO. Albany, OR. 541-619-4720

**Ford Row Crop Tractors:** 4630 and 4610, 60HP, 52HP PTO, \$6500/\$4500. Troutdale, OR. 503-665-1528

**High Clearance:** 5000 Ford, 8 speed, 9.5-24 front, 11.2R48 rear. Rears Pak Tank Sprayer with hydraulic boom, 150 gallon stainless steel, \$6500. Troutdale, OR. 503-320-9732

John Deere 8630 with 50 Series motor, (8) 18.4x38 tires, 70 percent, 3 remotes, 3 point, 1000rpm PTO, \$9000 OBO. Dayton, OR. 503-435-7080

**WANTED:** Several John Deere Hi-Crop Tractors. Tractor Models: 7210, 7410, 7420, 7330 with creeper transmission. 503-719-2545

**WANTED:** Several John Deere Hi-Crop Tractors. Tractor Models: 7210, 7410, 7420, 7330 with creeper transmission. 503-719-2545

**WANTED:** Several John Deere Hi-Crop Tractors. Tractor Models: 7210, 7410, 7420, 7330 with creeper transmission. 503-719-2545

**WANTED:** Several John Deere Hi-Crop Tractors. Tractor Models: 7210, 7410, 7420, 7330 with creeper transmission. 503-719-2545

**WANTED:** Several John Deere Hi-Crop Tractors. Tractor Models: 7210, 7410, 7420, 7330 with creeper transmission. 503-719-2545

**WANTED:** Several John Deere Hi-Crop Tractors. Tractor Models: 7210, 7410, 7420, 7330 with creeper transmission. 503-719-2545

**WANTED:** Several John Deere Hi-Crop Tractors. Tractor Models: 7210, 7410, 7420, 7330 with creeper transmission. 503-719-2545

**WANTED:** Several John Deere Hi-Crop Tractors. Tractor Models: 7210, 7410, 7420, 7330 with creeper transmission. 503-719-2545

**WANTED:** Several John Deere Hi-Crop Tractors. Tractor Models: 7210, 7410, 7420, 7330 with creeper transmission. 503-719-2545

**WANTED:** Several John Deere Hi-Crop Tractors. Tractor Models: 7210, 7410, 7420, 7330 with creeper transmission. 503-719-2545

**920 Tractors**



2012 John Deere 9140R ag tractor: Duals, duals, 18 speed forward and 6 reverse, 4400 hours, 410 HSP, good rubber. Set up to pull disc or scrap-er. Very nice and clean machine! Job ready unit, \$132,500. P.O.R. Financing and delivery available. Central Point, OR. 541-531-2337

Massey Ferguson 165 Tractor: 58HP. 3 Point PTO. Rear Auxiliary Loader. Excellent Condition, \$6,750. Sandy, OR. Call Pat 503-407-9062

**923 Farm Equipment**  
Willamette Ag Show Special: 24' Harrow-AR400 Hard Bars. Extended Rear Hitch, Dual Pioneer Breakaways, 2 Rows of S-Tines, 10' Center Section, \$30,700. Independence, OR. 503-586-4564

Eversman 14' tandem disk, 7" spacing, \$3000. 14' Schmeiser packer, \$2000. 7' Schmeiser plow packer, \$800. Pasco, WA. 509-539-1054

Nearly new Powell HEMP Harvester (Model 6031) with factory spare parts. Requires 80 HP tractor. Selling for \$25,000, (paid \$39,700). Vinton, CA. 775-849-3811

2017 John Deere 6110M: 469 hours, factory warranty, MFWD, \$65,000. Cove, OR. 541-910-8024

**Don't Miss This One!**  
New Holland TC45DA tractor, 329 hours, shop stored, Land Pride rotary cutter, rotary tiller, post hole digger, \$21,000. McMinnville, OR. Michael 503-883-3031

2008 Cat Challenger MT755B, 300+ HP, 4464 hours, new tracks. Excellent condition, \$98,000 negotiable. Pendleton, OR. 541-969-8774

Case IH MX 255. 6500 hours, 50%+ rubber. Good condition and well maintained, \$42,000 Pasco, WA. Call 509-221-9317

**WANTED:** Several John Deere Hi-Crop Tractors. Tractor Models: 7210, 7410, 7420, 7330 with creeper transmission. 503-719-2545

**WANTED:** Several John Deere Hi-Crop Tractors. Tractor Models: 7210, 7410, 7420, 7330 with creeper transmission. 503-719-2545

**WANTED:** Several John Deere Hi-Crop Tractors. Tractor Models: 7210, 7410, 7420, 7330 with creeper transmission. 503-719-2545

**WANTED:** Several John Deere Hi-Crop Tractors. Tractor Models: 7210, 7410, 7420, 7330 with creeper transmission. 503-719-2545

**WANTED:** Several John Deere Hi-Crop Tractors. Tractor Models: 7210, 7410, 7420, 7330 with creeper transmission. 503-719-2545

**WANTED:** Several John Deere Hi-Crop Tractors. Tractor Models: 7210, 7410, 7420, 7330 with creeper transmission. 503-719-2545

**WANTED:** Several John Deere Hi-Crop Tractors. Tractor Models: 7210, 7410, 7420, 7330 with creeper transmission. 503-719-2545

**WANTED:** Several John Deere Hi-Crop Tractors. Tractor Models: 7210, 7410, 7420, 7330 with creeper transmission. 503-719-2545

**WANTED:** Several John Deere Hi-Crop Tractors. Tractor Models: 7210, 7410, 7420, 7330 with creeper transmission. 503-719-2545

**WANTED:** Several John Deere Hi-Crop Tractors. Tractor Models: 7210, 7410, 7420, 7330 with creeper transmission. 503-719-2545

**WANTED:** Several John Deere Hi-Crop Tractors. Tractor Models: 7210, 7410, 7420, 7330 with creeper transmission. 503-719-2545

**WANTED:** Several John Deere Hi-Crop Tractors. Tractor Models: 7210, 7410, 7420, 7330 with creeper transmission. 503-719-2545

**WANTED:** Several John Deere Hi-Crop Tractors. Tractor Models: 7210, 7410, 7420, 7330 with creeper transmission. 503-719-2545

**WANTED:** Several John Deere Hi-Crop Tractors. Tractor Models: 7210, 7410, 7420, 7330 with creeper transmission. 503-719-2545

**WANTED:** Several John Deere Hi-Crop Tractors. Tractor Models: 7210, 7410, 7420, 7330 with creeper transmission. 503-719-2545

**WANTED:** Several John Deere Hi-Crop Tractors. Tractor Models: 7210, 7410, 7420, 7330 with creeper transmission. 503-719-2545

**WANTED:** Several John Deere Hi-Crop Tractors. Tractor Models: 7210, 7410, 7420, 7330 with creeper transmission. 503-719-2545

**WANTED:** Several John Deere Hi-Crop Tractors. Tractor Models: 7210, 7410, 7420, 7330 with creeper transmission. 503-719-2545

**WANTED:** Several John Deere Hi-Crop Tractors. Tractor Models: 7210, 7410, 7420, 7330 with creeper transmission. 503-719-2545

**WANTED:** Several John Deere Hi-Crop Tractors. Tractor Models: 7210, 7410, 7420, 7330 with creeper transmission. 503-719-2545

**WANTED:** Several John Deere Hi-Crop Tractors. Tractor Models: 7210, 7410, 7420, 7330 with creeper transmission. 503-719-2545

**WANTED:** Several John Deere Hi-Crop Tractors. Tractor Models: 7210, 7410, 7420, 7330 with creeper transmission. 503-719-2545

**NEW & USED OLIVER & CLETRAC**  
Crawler Parts Are Our Specialty  
ZIMMERMAN OLIVER-CLETRAC  
1450 Diamond Station Rd. • Ephrata, PA 17522  
**717-738-2573**  
Fax 717-733-3529  
[www.olivercletrac.com](http://www.olivercletrac.com)  
5134970-1

**Nyssa Tractor & Implement**  
Our yard has 5 miles of road, the rest is farm machinery & parts.  
[www.nyssatractor](http://www.nyssatractor.com)