

805 Farm Buildings

Martin Cisneros Pole Buildings & Concrete: Shops, garages, arenas, hay storage. Agriculture/Residential, additions and repairs. Serving Oregon CCB# 135771. Licensed, bonded and insured. Excellent references. 503-375-9273 or 503-507-2847

Heavy Duty Bolted Timber Truss Buildings. Specialized Custom Designs. Challenging Projects Welcome. Sites Cleared, access roads. Concrete Slabs, Restorations and Re-roofs. Al Fromherz Construction. Since 1972. Dallas, OR. Call or Text 503-931-9585 CCB#44178

807 Fuel, Heating & Firewood



WANTED: clean, white birch wood, 4' to 8' logs and branches. Minimum 1-1/4" diameter. Maximum 12" diameter 206-650-8744

813 Antiques & Collectibles

John Deere 40-C crawler, hydraulic angle blade, electric wench. New: paint, gages, 12V conversion alternator and roll protection canopy. Engine and tracks in good to excellent condition. Ready to work or show, \$5650. Delivery available. Springdale, WA. 509-251-1119

821 Christmas Trees

(3) Christmas Tree Truck beds: 8x20, + over cab space: 8x8. Sublimity, OR. 503-769-7127

Greenbriar Ag Management Offering Professional Christmas Tree Services: Experienced, quality work, planting through harvesting, stump grinding. Sales, brokering, licensed & bonded contractor. Farm & Forest Labor License #10628 Stayton, OR. 503-932-2323 greenagmngt@wvi.com

OUR WESTERN ROOTS RUN DEEP
Up-to-date news of ag in the west

- Newspaper
- E-editions
- E-newsletters
- Mobile
- Website



822 Nursey Stock - Plants

Common Boxwoods, gallon pots, ready to plant. Minimum 25, \$5 each. Silverton, OR. 503-910-3909

822 Nursey Stock - Plants

Plan Ahead To Be Late.

FALL CREEK FARM & NURSERY, INC.
1.800.538.3001 | www.fallcreeknursery.com

821 Christmas Trees

Christmas Trees For Sale
CHRISTMAS TREES (10,000) Noble: 3', 4', 5' and some small 6'. (2,000) Douglas Fir: 5' and 6'. Colton, OR. 503-314-0145

Cash Paid. Top Prices. Christmas Tree Fields. Any Condition. Oregon, Washington. 503-873-6774, 503-551-5809



Single PTO DeJong-Products Christmas tree shaker, barn stored, \$1200. Tahuya, WA. 360-731-3285

New & Used Helicopter Ropes: Sublimity, OR. 503-580-7313



Handmade Noble Fir Christmas Wreaths, Swags and Garlands, wholesale rates. Also buying Noble Fir and Cedar boughs. Troutdale, OR. 503-666-7896



Howey Model 210RC Tree Baler For Sale. Bales small to medium sized trees. Cone opening of 18" and equipped with roller chain pull thru system. Very reliable production machine with Honda 9H gas engine. Excellent condition and very little use, \$3,500. Sandy, OR. 503-781-7707



Howey Christmas Tree Shaker and Re-Bar Drilling Tree Stand for sale as an equipment pair. Model 120 Tree Shaker powered by 1HP electric motor. Christmas Tree Re-Bar Stand drilling machine for manufacturing tree stands for trees. Both are in excellent shape with limited use. Asking \$600 OBO for the pair. Sandy, OR. Call Milo at 503-781-7707.

Buyer - Looking for 7'-13' NOBLE and NORDMAN Fir. Can fill with other smaller varieties and sizes if needed. Have own trucking. Text or call 858-344-0979



2003 DeJong Tree Shaker: self propelled, shakes 8 trees, 24HP V-twin Honda, \$4,500 OBO. Creswell, OR. 541-517-4448



CHRISTMAS TREE EQUIPMENT: Evergreen baler with shaker, drill jaw, and lights, \$10,000. DeJong jaw baler (converted to Evergreen twine cans), \$6000. DeJong double shaker (3 point, 540 PTO), \$1000. Approximately 150 helicopter slings, \$500 or entire package \$15,000. Monroe, OR. 541-953-4890, 541-915-1234

822 Nursey Stock - Plants



Common Boxwoods, gallon pots, ready to plant. Minimum 25, \$5 each. Silverton, OR. 503-910-3909

822 Nursey Stock - Plants

Plan Ahead To Be Late.

FALL CREEK FARM & NURSERY, INC.

1.800.538.3001 | www.fallcreeknursery.com

822 Nursey Stock - Plants

Leyland Cypress (container or field grown), Emerald Green Arborvitae, Green Giant Arb, Otto Luyken Laurel, Dawn Redwood. All B&B, excellent quality, vigorous plants. Shipping available. Troutdale, OR. 503-348-5902

Hedge & Border Varieties: Leyland Cypress, Green Giant, Arborvitae, and Laurels (English, Schip and Portuguese). Excellent for road and property barriers. **Severson Farms, Springfield, OR.** Call 541-228-6085

Sacajawea, Doris, York, Webster **Hazelnut Trees**, 4 years old, \$6-\$8. **Blueberries, Duke, Legacy:** 3 year old plants, \$2.50 each. Crabtree, OR. 503-871-9114



Hazelnut Trees: McDonald, Jefferson, Yamhill, Wepster, York, Eta, Theta, Felix. Dayton, OR. 503-864-4422

EMERALD GREEN ARBORVITAE: rooted cuttings and 2-1/4", liners available. Forest Grove, OR. Call 503-359-7540

Blueberry (20 varieties), Raspberry, Marion, Boysen, Currant, Grape, Kiwi, Strawberry Plants. Canby, OR. 503-730-4788 www.canby.com/morningshade

HAZELNUT TREES: Polly-O (\$6.25), Yamhill (\$5), Jefferson (\$5), and pollinizers. Excellent caliper and roots. Scio, OR. 503-508-4684



Polly O and McDonald Hazelnut Trees Potted / Bare Root Newberg, OR. 503-858-7865



Start your Hazelnut Orchard with larger trees: 3 years, 2 gallon Jefferson trees, while supplies last, \$7. Silverton, OR. 503-873-5940

Containerized Swedish Aspen and Arborvitae (American Pillar and Emerald Green) at wholesale prices. Carpathian Walnut bare Root Seedlings. Lyons, OR. 503-580-5852

CLASSIFIED LINE ADS GET RESULTS
1-800-882-6789
CapitalPress.com

Blueberry Plants



Northern Highbush
Southern Highbush
Rabbiteye

Call or visit us online today.

(503) 873-1200
www.oreblueberry.com

824 Seed

Pasture Seed \$1.20/ lb. Lawn Seed \$1.20/ lb. Wheat Straw \$120/ ton. Grass Hay \$180/ ton. Wheat \$6/ bag. Rickreall, OR. 503-623-6922

Quality VNS Alfalfa Seed: \$2.00/ lb. Touchet, WA. Chris Kregger 509-394-2400

825 Fertilizer



POTENTGROW Organic Fertilizer AG SERVICES
•Transportation
•Warehousing
•Chicken litter/ manure
•Organic fertilizer
•Hemp logistics
For pricing and freight quotes call/ text 541-602-9477 or e-mail: info@potentgrow.com

826 Organic

CERTIFIED ORGANIC Alfalfa, 3x4 bales, also 3 string bales. Othello, WA. 509-989-2141, 509-592-3499

Organic and Conventional Round Bale Silage/Haylage, \$40 to \$55 bale. Delivery Possible. Scio, OR. 503-930-2738

826 Organic

900 Bales of Organic Haylage: good quality, \$55/ bale. Scio, OR. 503-932-1005

835 Hemp



Nearly new **Powell HEMP Harvester** (Model 6031) with factory spare parts. Requires 80 HP tractor. Selling for \$25,000, (paid \$39,700). Vinton, CA. 775-849-3811

Extra large facility suitable for **HEMP drying**. Independence, OR. 503-838-3740



Big Bale Hemp or Hay Grinder: excellent condition, \$5000. Wilsonville, OR. 503-806-7536

Secluded Valley: 95 Irrigated Acres. All/part in orchard grass. Klamath Falls, OR. John 541-892-1948

New Holland FX28 Forage Chopper, excellent condition, used on hemp 2019, 4-row corn head, 8" grass head, \$80,000. **OBO. Dryer: Farm Fan Model 150AB, \$10,000 OBO.** Cornelius, OR. 503-341-4289

Baled hemp drying services available November-December. Up to 15,000 dry pounds per day. Trucking to drying facility available. Pricing dependent on volume. Call Brian, Salem, OR. 503-580-8308

***HEMP GROWERS* It's not too late!**

Let us get your valuable crop harvested with our 900HP Claas Forage Harvester and Orkel high compression balers. Bales can be safely stored, allowing time to dry and market your product. Serving Oregon/ California. Call for info: 971-273-3211

Farm Land for Lease/ Hemp Farm: 500 Acres under pivots, good water, good soils, large commodity shed available, \$1100 acre. Burns, OR. 541-493-2772

869 Livestock Equip. & Supplies



At Palouse Ranches, we build **Portable Shelters and Livestock Equipment**. Servicing the entire Pacific Northwest. Contact us for a quote. www.palouseranches.com, 208-301-1091

Livestock Panels: 16' (6) rail, (3) brace, \$128 each. 12' panels, (6) rail, (2) brace, \$96. Bow gates, all lengths and sizes. These panels are new Green color, hundreds available. **Heavy 16' Feeder Panels**, \$330 each. La Grande, OR. 541-805-9279, 541-963-6258



HDPE Pipe for Ranch Water Systems: *Fair Prices *Good Service *Rancher Owned. Quantities up to truckload. Delivery available. 775-657-1815

Dew-Eze round bale feeding machine. Good condition, \$3300. Silverlake, OR. 541-576-2552

1986 International DT466; tandem axle feed truck, Farm shop, feed box with beltavator on side, \$25,000. Lebanon, OR. 541-905-6064

872 Dairy Eq. & Supplies

Kiln Dried Shavings: Smaller truck loads now available. Hogfuel also available. Call for details. Forest Grove, OR. 503-849-0216

Polydome Calf Nursery: Hutches available for various climates. Western Polydome, Inc. Monroe, WA. 800-822-5837

CAPITAL PRESS CLASSIFIEDS GET RESULTS!



400 bu. • BUY OR RENT Call Scott at Barr-Tech Compost/Organics Recycling Authorized Dealer of PIK RITE Spreaders 509-590-0437 www.Barr-Tech.net Sprague, WA 5138359-1

875 Tanks & Storage

FUEL TANKS: (1) 5000 gallon UL2085, split 2500/2500. 1000, 2000, 3000 and 5000 gallon double walled tanks. Single wall tanks 6000, 12,000 & 20,000 gallons. Salem, OR. Peter 503-881-9803

878 Generators



GENERATORS: Used, low hour takeouts, 20kW to 2000kW, diesel, propane, & natural gas. Cooperstown, ND. We ship nationwide. 701-371-9526 or 701-367-4305 abrahamindustrial.com



30 KW Onan generator set, propane. 1 and 3 phase. 110V to 480V capable. 875 ACTUAL HOURS. Has cabinet with all side panels included. Very clean and well maintained, former Municipal machine. Needs nothing but the propane tank, \$3900. Located in Twin Falls, ID. Call 208-613-0050



2005 Onan 35 KW Gen-Set. Propane. 1-3 Phase. 110-480 Volt. Ford Industrial V6. Very low hours. In brand new condition. \$7900. Located in Twin Falls ID. Call 208-613-0050



Cat gen, 60 KW, 3 phase, can be wired for 1 phase. 131 hours, including auto trans switch, diesel tank. Very nice condition, \$7000 OBO. Quincy, WA. 509-750-6439

887 Irrigation Equip.

(70) Used Pivots: Engines, pumps. Garden Valley, ID. Call Mike at 208-420-1480, or see www.pivotsplus.com

WANTED to buy or lease in Marion County, Oregon. Surface Water Right from the Pudding River or a tributary thereof. Any acreage considered. 503-710-7579

WANTED: 6" ringlock aluminum irrigation pipe with valves. Oregon 503-710-7579



Westinghouse IRRIGATION/ HYDRANT PUMP assembly: 100hp, 480/ 277v, 3ph 1500 gpm, 150"Lx55"Wx45"H, soft start controller/ panel, \$6400 OBO. Ferndale, WA. 360-380-2907

WANTED: irrigation main line, 5", 6" and 8" supply hydrants. Wade rain and/ or Ringlock. Salem or surrounding area, OR. 503-437-4833

Drip Tube: .26gph at 30" centers, 350 rolls, \$75 per roll. Lafayette, OR. 503-437-4833

(3) 1/4 mile wheel lines with newer movers, (1) 4", (2) 5", \$6000 for all. Toppensish, WA. Call/ Text 509-840-2488

Pivots: Good, various lengths, all brands & late models. No rust. Plus buried wire. Call Keizer, OR. Cell 503-881-3232, 503-390-3210

(5) 1200' long wheel lines with hydraulic movers, levelers. Good shape, used this season, \$4500 each. Pasco, WA. 509-539-1054

(5) 1/4 mile Wheel Lines, good or new motors, \$3500 each. Madras, OR. 503-508-7511

IRRIGATION EQUIPMENT BOUGHT. SOLD. RENTAL.

Design of Effluent Handling Systems - Gates, Valves & Aerators
New & Used Parts
• Aluminum Pipe • Certa-lok
• Siphon Tubes • HDPE
• Sand Media Filters
• Wheel Lines • Pumps
Office: (209) 460-0450
Fax: (209) 982-1832
www.pacsouthwestir.com
Carlos (209) 481-7677
Jim (209) 986-0099 5118486-1

894 Sawmill Equip.

Mobile Dimension 128; 1076 hours. LOADED. Hardly used, hydrostatic drive, Mobile Dimension trailer, \$26,000. Concrete, WA. (360)708-8302. If no answer, leave message.

896 Forklifts



2015 Hoist P330 forklift, 33,000 lb capacity, 4450 hours, 6' forks hydraulic fork positioners. Side Shift, 2 stage mast, Cummins 3 speed auto, pneumatic tires, \$72,000. Gaston, OR. 503-789-3726



2005 John Deere 3420 4x4 Telescopic forklift with bucket, enclosed cab. NICE, \$39,500. Wilsonville, OR. 503-260-0303



Hyster H200 HS: 1989, 20K capacity, 4 control valves, 182" upright, 2 stage, 3 speed, automatic monotorl, Perkins diesel, side shift, good brakes, no leaks, 6' forks, full width carriage, e-brake. Runs Good! Hay Squeeze? \$20,000! Gaston, OR. 503-789-3726

899 Heavy & Indust. Eq.

Terex Dozer: 235HP, fresh engine rebuild, blade and drum. Priced to sell! \$15,000. Monmouth, OR. (503)623-2089



1999 Tucker Sno Cat 2000. Cummins 5.9 Automatic. 5 Passenger. 12 Way Blade. Idaho Northern Trail Groomer. \$39,500. Sandy, OR. Call Pat 503-407-9062

"Thanks! Very effective ad!" William Krieg - Portland, Ore. Call 1-800-882-6789 to advertise.



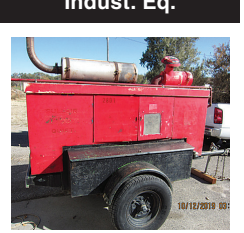
RIVERBROOK FARM HAULING SERVICE
Brooks, OR
WE HAUL!
• Building Supplies • Farm Equipment
• Construction Equipment • Heavy Equipment
• Granular Fertilizer • Grain/Wheat
888-393-1819 • www.riverbrooktrucking.com

887 Irrigation Equip.

887 Irrigation Equip.

887 Irrigation Equip.

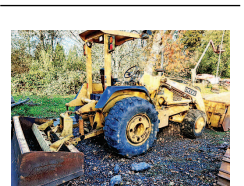
899 Heavy & Indust. Eq.



Sullair 185 CFM Air Compressor. 4 cylinder, gas GM Industrial engine. 1400 Hours. New tires. Well maintained and everything works properly. WORK READY. \$3900. Located in Twin Falls ID. Call 208-613-0050



Ingersoll Rand 175 CFM air compressor. 999 HOURS. Gas. Trailer mounted. Good tires. Well maintained one owner machine, \$5900. Located in Twin Falls ID. Call 208-613-0050



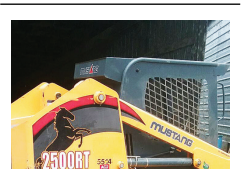
John Deere 210 LE Skip Loader. 4X4. Ripper. 4 in 1, \$26,500. Sandy, OR. Call Pat 503-407-9062



2012 John Deere 323E skid steer track loader, enclosed cab with AC, 3000 hours. NICE, \$37,500. Wilsonville, OR. 503-260-0303



D-6 H U-dozer with tilt and ripper, near new engine and hydraulic pump, \$79,500. Salem, OR. 503-362-3055



2014 Mustang 2500RT track steer, 1827 hours, \$40,000. Ingersoll Rand Air compressor P175WD, Deutz, 54.5, \$2400. Myrtle Point, OR. 541-260-4114



John Deere 550H LT Dozer. 6 way blade. Ripper. CWS brush rake. 2,300 hours, \$49,500. Sandy, OR. Call Pat 503-407-9062



Cat D7F dozer, 94N series, power shift, cab, U-blade, 75% U/C, #25 cable unit, Cat #70 pull scraper, package \$24,500. Good condition. Camas, WA. 360-607-1646

899 Heavy & Indust. Eq.

899 Heavy & Indust. Eq.

899 Heavy & Indust. Eq.

END OF SEASON SPECIALS!
Winterize and Repair your equipment now so it's ready to work for you next season!

ERNST IRRIGATION
ccbf# 185365

TRAVELER SERVICE*
Annual service and inspection **10% OFF PARTS & LABOR**

PANEL INSPECTIONS*
Service includes the following:
• Loose connections • Noisy starters
• Rusty components • Water damage
• Check for signs of heat build-up
10% OFF PARTS & LABOR

VFD SERVICE*
• Inspection
• Change filters
10% OFF PARTS & LABOR

PUMP SERVICE*
Great time to have bearings, packing, and seals checked out!
10% OFF PARTS & LABOR

Trade Ally of **EnergyTrust of Oregon**

Special valid for work scheduled by Jan. 3