

920 Tractors

Ford Row Crop Tractors: 4630 and 4610, 60HP, 52HP PTO, \$6500/\$4500. Troutdale, OR. 503-665-1528

High Clearance: 5000 Ford, 8 speed, 9.5-24 front, 11.2R48 rear. Rears Pak Tank Sprayer with hydraulic boom, 150 gallon stainless steel, \$6500. Troutdale, OR. 503-320-9732

John Deere 8630 with 50 Series motor, (8) 18.4x38 tires, 70 percent, 3 remotes, 3 point, 1000rpm PTO, \$9000 OBO. Dayton, OR. 503-435-7080

920 Tractors

John Deere 8970 Wheel Tractor. In nice condition. Shows 3313 hours. Very good 710/70R38 metric tires, 24 speed transmission, differential locks, 3 hydraulic remotes, \$35,000. Genesee, ID. Call or Text 509-336-1995 or 208-669-0397

John Deere 7800: runs excellent, 8700 hours, \$35,000. Jefferson, OR. 541-327-1645

Attention: Wanted Kubota or John Deere, 4x4 compact tractor with loader/equipment. Carlton, OR. 503-550-0094

923 Farm Equipment

Verminator gopher baiting machine, very good condition, \$2500. Silverlake, OR. 541-576-2552



Rigid Harrow: 20', wing fold to 10', \$950. John Deere 27 flail mower, 14', \$2300. Folding disc, 24', spacing 9" with harrows, \$4500. Eagle-Creek, OR. 503-793-1138



Westendorf loader with 7' bucket, 4' forks, quick attach. Great shape, \$5500 OBO. Albany, OR. 541-926-8935

John Deere 915 flex header, single point hookup, pick up real. Excellent condition, \$4950. Warren, OR. 503-952-6433

John Deere 3x grain/ fert drill set, 4555 mfw cab, 7210 high crop, Kello-Bilt 16' disk, J&M 32' roller, EHCO 3" x 1100' irrigation reel. Woodburn, OR. 503-454-8047

Brent disc ripper, 5 shank, good blades, new tires, rebuilt cylinders, \$10,500. Albany, OR. 503-510-7779

923 Farm Equipment

2006 Sterling truck with laird feed box 1200, vertical twin augers, \$90,000 OBO. Hermiston, OR. 541-314-5252

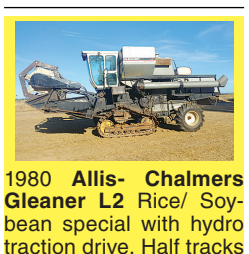
Great Plains 12' No-till drill with cart, 6" spacing. Main, small seeds, and fertilizer boxes included. 1300 acres on meter, \$32,000. Albany, OR. 503-551-1367



Willamette Ag Show Special: 24' Harrow-AR400 Hard Bars. Extended Rear Hitch, Dual Pioneer Breakaways, 2 Rows of S-Tines, 10' Center Section, \$30,700. Independence, OR. 503-586-4564



Nearly new Powell HEMP Harvester (Model 6031) with factory spare parts. Requires 80 HP tractor. Selling for \$25,000, (paid \$39,700). Vinton, CA. 775-849-3811

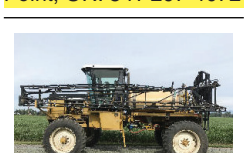


1980 Allis-Chalmers Gleaner L2 Rice/ Soybean special with hydro traction drive. Half tracks & Firestone Champion Spade grip tires. Always shedded, \$7500. Pleasant Grove, CA. 916-417-4864

Don't Miss This One! Had a Stroke Unused Work Gloves to Trade: X-Large left-hand work gloves to trade for unused X-Large right-hand work gloves. Call Roger: 509-630-6882

923 Farm Equipment

Hi-Lift Farm Hand Loader, excellent condition, 7ft. quick attach bucket and bale spears, joy stick control and tractor mounts, \$4700. Myrtle Point, OR. 541-297-4072



664 Rogator, 660 gallon tank, 90' booms, 6 cyl Cummins, 2874 hours, midtech legacy 6000 controller with light bar and auto boom, 10 section boom. Runs good, \$29,000 OBO. Albany, OR. 541-401-7725

923 Farm Equipment

Chisel plow, Dunham Lehr, 7 shank, 3" points, \$1550 OBO. Warren, OR. 503-952-6433

Jamesway manure Agipump, 50', with hydraulic fill pipe, \$16,500. Albany, OR. 541-619-4720

A & L Bankout Wagon, model 47, PTO driven, 12" unloading auger, 23.1x26 tires, field ready, \$5250. (2) Stainless steel tanks, approximately 250 gallons, 10'Lx2'D, with skids, \$300 each or \$500, both. AC Jeoffroy chisel plow, 30', hydraulics, 12" centers, \$1000. Eastern WA. Text 509-660-0552. All texts will be returned.

923 Farm Equipment



923 Farm Equipment

TONS OF USED FARM WHEELS. AG WEST TIRE FACTORY Rickreall 503-623-9171 ~ Mike

Branson TRACTORS advertisement featuring a 7845 R Tractor Old Stock with reduced price. Includes contact information for The Tractor Store in Eugene, OR.

Trailer World advertisement for a new Branson 2400 tractor. Features 'Always Best Service guaranteed' and 'Always lowest prices guaranteed' slogans. Includes contact info for John 3:16.



LIKE NEW Westfield WR100 31ft. grain auger, \$2000. Tub included. Morris HR-36 roodweeder, \$2000. Timpte 42ft high cube aluminum grain trailer, DOT certified, new tires, \$24,500. Troy OR. Call 509-256-3374 awodom@gmail.com

John Deere 4023 sprayer, 90' booms, 679 hours. McMinnville, OR. 503-209-5846



STORAGE CONTAINERS: 20' & 40', wind and weather tight. 1 year warranty on leaks. Delivery on a tilt bed trailer. Viking Cargo Containers Inc. CALL/TEXT 541-229-7280 www.VikingCargoContainers.com

GET 'EM AT FARMLAND NOW! advertisement listing various tractors and equipment with prices. Includes contact info for Farmland Tractor Supply in Eugene, OR.

Western Storage Trailers advertisement for 20' & 40' containers and 27', 40', 45' & 48' trailers. Includes contact info for Western Mobile Storage in Eugene, OR.

FALL SPECIALS advertisement for Linn Benton Tractor. Features Kubota harvest rental returns, used Kubota tractors, and other equipment & utility vehicles. Includes contact info for Linn Benton Tractor in Eugene, OR.

McHale 10% DISCOUNT advertisement for balers and wrappers. Includes images of McHale equipment and contact info for TJEquipment LLC in Lynden, WA.

SSE Equipment advertisement listing various farm equipment for sale. Includes contact info for SSE Equipment in Pasco, WA and other locations.

Landoll advertisement for new & used equipment. Features images of Landoll machinery and contact info for Landoll in Aumsville, OR.

Doerfler Tractor Sales Company advertisement. Includes contact info for Doerfler Tractor Sales Company in Aumsville, OR.

Community Cultivating advertisement. Includes contact info for Community Cultivating in Eugene, OR.