

# Don't Miss Another Issue of Capital Press!

Stay up to date on the latest agricultural and natural resources news.

ANYTIME ANYWHERE

1 year  
**\$55**

2 years  
**\$100**

EZ Pay  
**\$4**  
month



SUBSCRIBE TODAY!



1-800-781-3214  
CapitalPress.com

354 Auction Sales

354 Auction Sales

## Albany Year End Consignment Auction



**Albany Auction Co**  
Sunday, December 15th

See next weeks ad for more info

- Farm Machinery • Trailers
- Trucks • Heavy Equipment • Misc.

Now Taking Consignments, Big & Small

541-928-8868 (Call/Text)

info@AlbanyAuctionCo.com | AlbanyAuctionCo.com

## Voluntary Liquidation AUCTION Fred Devine Diving & Salvage

6211 North Ensign Street, Portland, OR  
Thursday November 21, 2019 @ 8AM

**Featuring:** 7 Aluminum hull work boats to 36' • P&H 780 truck crane • 5 trucks • 4 forklifts • 6 compressors • 60 pumps – Trash, Water, Fire, etc. • 3 Gensets to 187.5 KVA • 14 welders • Machine Shop • 4 Detroit diesel engines • 7 outboards to 30 HP • 8,000' of Blue Steel and Manila mooring rope • numerous power and hand tools, Gangways, pallet racking, buoys, dollies, snatch blocks, lifting slings, etc.

Preview & Inspection Wednesday

November 20 – 9AM to 5 PM

Visit our website for full details [www.pahlindustrial.com](http://www.pahlindustrial.com)

Bidding available at BidsPotter.com

**Pahl INDUSTRIAL INC**  
AUCTIONEERS • APPRAISERS • LIQUIDATORS  
4040 SE International Way, Suite E204, Portland OR 97222-8864  
Phone (971) 206-0017

## PUBLIC AUCTION

**Vance Lift Truck Service - Tacoma**

Tuesday, November 12, 9AM

Preview: Monday, November 11, 9AM-5PM

10005 Lakewood Ave. SW, Lakewood, WA

## COMPLETE LIQUIDATION

(15+) Forklifts; IH Truck W/ 40' Trailer; Isuzu Truck; Shop Tools & Equipment; Forklift Forks & Attachments; New Parts; Hydraulic Pallet Jacks; Forklift Seats; Pallet Racking; Storage Containers; Office Furnishings & Much More!

For Info and Brochure Check Our Website  
**WWW.MATHERAUCTIONS.COM**

PH: 253-847-9161 WSL 194

**HAROLD Mather INC., AUCTIONEERS**

## (2) ONLINE AUCTIONS

**FONSECA & FONSECA, INC.**  
HAVE SOLD THEIR RANCH • EVERYTHING SELLS

**WALNUT GROVE, CA**

Nov. 8th- Nov. 12th



## NORTHERN CALIFORNIA EQUIPMENT

**COLUSA, CA**

Dec. 13th - Dec. 17th



Learn more at

**www.AUCTION-IS-ACTION.COM**

**PUTMAN AUCTIONEERS, INC.**  
EMAIL: PUTMAN.KEVIN@YAHOO.COM

KEVIN PUTMAN JOHN PUTMAN  
(530)566-5083 (530)701-8596

43-2-3/102

**TRY CAPITAL PRESS CLASSIFIEDS**  
CALL TODAY! 1-800-882-6789

FAX (503) 370-4383 • CapitalPress.com

561 Ranches

561 Ranches

525 Commercial Property



**FOR SALE:** Building/Warehouse; Retail/ Office space, Scappoose/ Sauvie Island, HWY 30 Roadfrontage, 1.14 Acres with 5000sqft Insulated Steel Building, double 14'x16' roll-up doors. Currently Marine Repair Facility, Zoned MUA20. 20 minutes to Downtown Portland. Business also available. \$629,000. Contact Matt Moran, Realtor, Windermere Realty Trust 503-781-9646

## Buying or Selling

Capital Press is here to help you!  
1-800-882-6789  
or FAX 503-370-4383  
CapitalPress.com

525 Commercial Property



Retail space in rural Wasco, Oregon. Currently the only grocery store in Wasco. Equipment, building & land. **\$175,000** RMLS #19564864

**DRYSIDE PROPERTY** Mary Beth Richman  
541-288-6189  
702 E 3rd St, The Dalles, OR

525 Commercial Property



## DECKER'S DEALS!

Everett Decker, Licensed Realtor  
John L. Scott-Redmond, OR  
541-548-1712 or 541-480-8185  
email: everett@johnlscott.com

**NEW LISTING** 805 Acres with 386.9 of Water Rights. 3 Newer Valley Pivots and 6 wheel lines. 308 Acres of North Unit Irrigation District Rights and 78 Acres of State Water Rights. Approximately 140 Acres of Dry Farm Land that has not been farmed for the past 3 years. Irrigated land is in alfalfa, Blue Grass and Orchard Grass. No buildings. 2018 RE Taxes were \$4,031.00. Located approximately 4 miles from Madras. **MLS 201909845 \$3,000,000.00**

**PRINEVILLE CUSTOM HOME ON 52 PLUS ACRES** 3500 Sq Ft 4 bedroom 3.5 bath Custom home with all the features. The home is Custom thru out, even with a security system and attached 3 car garage. There is a 60 x 100 Hay shed, shop, storage shed and wood shed as well as a 12 x 48 RV cover, well house and pantry. 4 wheel lines on 52 Acres of Ochoco Irrigation District water right land that is in a very productive stand of orchard grass. Has been a cattle-hay operation. **MLS 201905598 \$1,099,000.00**

**35 ACRES AT SILVER LAKE, OREGON.** Zoned Commercial-Residential and is sub-dividable. Private well with Mid State Electric to the property. Located on a paved Road. **MLS 201810781 \$195,000.00**

5151232-1

Print and online  
Ag News  
for  
ranchers,  
farmers,  
vintners,  
nursery  
people  
and more!

ANYTIME ANYWHERE

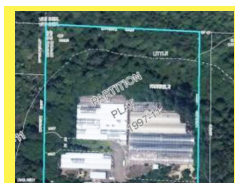


1-800-882-6789  
CapitalPress.com

561 Ranches

561 Ranches

543 Coast Properties



**9+ COASTAL ACREAGE** near Waldport, OR: currently has 115,000 sq.ft. of green houses, **City water**, (2) three phase power connections, water rights to pump from creek for irrigation, mostly level. Property could be used for other purposes- crops, hemp, tiny houses, ag/ truck garden or?? \$395,000. Seller motivated! Call **Kathleen 541-992-3399** or At the Beach 541-994-1156

546 Rentals, Leases

Farm Land for Lease/ Hemp Farm: 500 Acres under pivots, good water, good soils, large commodity shed available, \$1100 acre. Burns, OR. 541-493-2772

For Rent/ Lease: 150 acres can be used as HEMP ground (currently used for pasture). Reed-sport, OR. Call or email for details 541-271-4403. cncranch2320@gmail.com

Secluded Valley: 95 Irrigated Acres. All/ part in orchard grass. Klamath Falls, OR. John 541-892-1948

549 Residential Property



**HOME on the PRAIRIE-** Winnett, MT. near **Missouri Brakes- Hunters paradise!** Home, deck, large shop, storage. New roof & windows. On corner lots. 509-989-0194, 509-989-0782

**A picture is worth a 1,000 words**



Add a full color photo to your print and online ad.

**Capital Press**  
EMPOWERING PRODUCERS OF FOOD & FIBER

800-882-6789  
CapitalPress.com

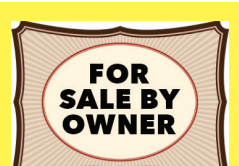
546 Rentals, Leases

555 Mini Ranchettes



Stunning Farm House on 41.51 Acre of flat usable land- Junction City, OR. 75x75 barn, large shop, round pen, chicken coop. Fenced/ cross fenced, water rights. Detached double car garage, 5 bedroom, 3 bath main home with a separate 3 bedroom, 1.5 bath ADU guest quarters. 15 minutes to Eugene airport. \$899,000. WVMLS #753174. Ron Stover-Broker. Home Smart Realty Group 541-602-0571

561 Ranches



**FOR SALE BY OWNER**

**LOWER CLEARWATER RANCH WITH CELL TOWERS. FSBO**

Approximately 685 acres canyon range land above Clearwater and Potlatch Rivers, east of Lewiston, Idaho via Cherry Lane Bridge. Good fall and spring cattle pasture. Stock water improvements. Vineyards nearby. Lower areas within Lewis-Clark Valley AVA. Home site with well and outbuildings; newer pole building, big old barn, good machine shed, shop with living quarters. Access by county road. **Two cell towers provide significant monthly income.** Whitetail, Mule Deer, Game Birds. Appraised at \$805,000. Seller to provide written detail in response to serious buyer inquiries only please. No realtors. Send inquiries to: [odieproperties@gmail.com](mailto:odieproperties@gmail.com)

**The West's BEST Ag News!**  
• newspaper  
• e-paper  
• facebook  
• twitter  
• web  
CapitalPress.com

546 Rentals, Leases

## State Leasing Opportunities Available

**IDAHO DEPARTMENT OF LANDS**  
Now Accepting Applications  
**Application Period Open from 10/21/2019 to 11/19/2019**  
Visit: <https://www.idl.idaho.gov/leasing/advertise/index.html>  
Call: 208-334-0278 149094-1

549 Residential Property

549 Residential Property

## GREAT PROPERTIES

**CALDWELL 12 ACRE HORSE/CATTLE SET UP**

Brand New 4 Bed, 2 Bath, 30x30 3 car garage, 2200 SF Single Level, 2x6 Construction, 40x70 heated shop with bathroom, barns, outbuildings, hay storage, can be split. Live year round creek, irrigated pastures, no climb fencing, on 150 year old farmstead with Huge Fruit and Nut Trees.

**NAMPA 137 SPACE RV PARK TO BE BUILT**

All Engineering is Complete, Permits Approved, Paved road access, City Sewer, Water and underground Utilities to the Site. Sits on 19 Acres with Live Year Round Creek and Old growth Trees. Easy Freeway Access and 184 Frontage. Ready to be developed, Waiting list of occupants.

**Virtual Tours Available on YouTube**  
**Stacey Budell**  
Delta Land Real Estate  
(208) 880-4244  
[stacey@idaho4homes.com](mailto:stacey@idaho4homes.com)  
[www.idaho4homes.com](http://www.idaho4homes.com)



561 Ranches

561 Ranches

THE WHITNEY LAND COMPANY  
EST. 1970

## FARM, RANCH, RECREATIONAL, & COMMERCIAL

The Whitney Land Company has been providing professional real estate services in Oregon, the Pacific Northwest and throughout the Rocky Mountain states since 1970.

• Jim Whitney, CCIM  
Owner/Principal Broker

• Todd Longgood, Owner/Broker

• Gary Jellum, Broker

• Timothy "Scott" Coe, Broker

• Travis Bloomer, Broker

• Blake Knowles, Broker

• Christopher Stuvland, Broker



**whitneylandcompany.com**



5107239-1