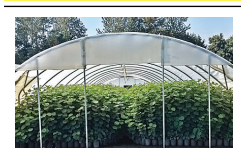


822 Nursey Stock - Plants



Halloween Pumpkins, large selection, minis to 40lb. Jack O' Lantern \$80 in your bin, \$100 with bin provided. Also Cinderella & White available. Sunnyside, WA. 509-840-4880

Red Rhubarb roots, some crimson red and other red varieties. Good healthy starts, \$2 each. Large volume discount. Sunnyside, WA. 509-840-4880



Jefferson, Yamhill, and Wepster. Beautiful, nursery grown, large quantities. BUY 1000 Jefferson, GET 500 Jefferson FREE! Blue Heron Farm, Independence, OR. 503-838-3779

Blueberry (20 varieties), Raspberry, Marion, Boysen, Currant, Grape, Kiwi, Strawberry Plants. Canby, OR. 503-730-4788
www.canby.com/morningshade

Leyland Cypress (container or field grown), Emerald Green Arborvitae, Green Giant Arb, Otto Luyken Laurel, Dawn Redwood. All B&B, excellent quality, vigorous plants. Shipping available. Troutdale, OR. 503-348-5902



Common Boxwoods, gallon pots, ready to plant. Minimum 25, \$5 each. Silverton, OR. 503-910-3909

Hedge & Border Varieties: Leyland Cypress, Green Giant, Arborvitae, and Laurels (English, Schip and Portuguese). Excellent for road and property barriers. **Severson Farms, Springfield, OR.** Call 541-228-6085

Sacajawea, Doris, York, Webster **Hazelnut Trees**, 4 years old, \$6-\$8. **Blueberries, Duke, Legacy:** 3 year old plants, \$2.50 each. Crabtree, OR. 503-871-9114



Hazelnut Trees: McDonald, Jefferson, Yamhill, Wepster, York, Eta, Theta, Felix. Dayton, OR. 503-864-4422

EMERALD GREEN ARBORVITAE: rooted cuttings and 2-1/4", liners available. Forest Grove, OR. Call 503-359-7540

824 Seed

Pasture Seed \$1.20/ lb. Lawn Seed \$1.20/ lb. Wheat Straw \$120/ ton. Grass Hay \$180/ ton. Wheat \$6/ bag. Rickreall, OR. 503-623-6922

825 Fertilizer



For sale by the truckload, delivered anywhere in OR./WA. PotentGrow 5-2-2 organic fertilizer pellets. Product of Washington State. WSDA approved for organic use. For pricing and freight quotes call/ text 541-602-9477 or e-mail: info@potentgrow.com

822 Nursey Stock - Plants

826 Organic

400 ton Certified organic Alfalfa, 3x4 bales, nice Alfalfa, \$190/ ton. Delivery available. 541-823-2769

Organic and Conventional Round Bale Silage/Haylage, \$40 to \$55 bale. Delivery Possible. Scio, OR. 503-930-2738

900 Bales of Organic Haylage: good quality, \$55/ bale. Scio, OR. 503-932-1005

CERTIFIED ORGANIC Alfalfa, 3x4 bales, also 3 string bales. Othello, WA. 509-989-2141, 509-592-3499

828 Misc for Sale

45 Galvanized Buckets, good condition, \$3.50 each. Newberg, OR. 503-538-2688

835 Hemp

HEMP DRY? Hop dryers for rent, 2100 sq.ft. Licensed in OR/ WA. 509-637-4652 Southwest, WA.

Farm Land for Lease/ Hemp Farm: 500 Acres under pivots, good water, good soils, large commodity shed available, \$1100 acre. Burns, OR. 541-493-2772



Nearly new **Powell HEMP Harvester** (Model 6031) with factory spare parts. Requires 80 HP tractor. Selling for \$25,000, (paid \$39,700). Vinton, CA. 775-849-3811

Extra large facility suitable for **HEMP drying**. Independence, OR. 503-838-3740



Big Bale Hemp or Hay Grinder: excellent condition, \$5000. Wilsonville, OR. 503-806-7536

Secluded Valley: 95 Irrigated Acres. All part in orchard grass. Klamath Falls, OR. John 541-892-1948

New Holland FX28 Forage Chopper, excellent condition, used on hemp 2019, 4-row corn head, 8' grass head, \$80,000 OBO. **Dryer: Farm Fan Model 150AB**, \$10,000 OBO. Cornelius, OR. 503-341-4289

869 Livestock Equip. & Supplies

WEIGH CALVES ANY PLACE ON THE RANCH! NORAC portable scales. 13ft x 18ft weigh deck, \$19,000. Walla Walla, WA. 509-529-7635



At Palouse Ranches, we build **Portable Shelters and Livestock Equipment**. Servicing the entire Pacific Northwest. Contact us for a quote. www.palouseranches.com, 208-301-1091

Livestock Panels: 16' (6) rail, (3) brace, \$128 each. 12' panels, (6) rail, (2) brace, \$96. Bow gates, all lengths and sizes. These panels are new Green color, hundreds available. Heavy 16' Feeder Panels, \$330 each. La Grande, OR. 541-805-9279, 541-963-6258

Check Out our line ads @ CapitalPress.com
Call in your classified ads by Wednesday: 10:00 Display Ad Noon Line Ad 1-800-882-6789

822 Nursey Stock - Plants

872 Dairy Eq. & Supplies

Kiln Dried Shavings: Smaller truck loads now available. Hogfuel also available. Call for details. Forest Grove, OR. 503-849-0216

Polydome Calf Nursery: Hutches available for various climates. Western Polydome, Inc. Monroe, WA. 800-822-5837

BEST SELLERS "...Had great results and will definitely use Capital Press again."
Len St. Claire, Horseshoe Loop, Lebanon, OR
Call 1-800-882-6789 to advertise.



400 bu. • BUY OR RENT Call Scott at Barr-Tech Compost/Organics Recycling
Authorized Dealer of PK RITE Spreaders
509-590-0437
www.Barr-Tech.net
Sprague, WA 43-3/104

875 Tanks & Storage

FUEL TANKS: (1) 5000 gallon UL2085, split 2500/2500. 1000, 2000, 3000 and 5000 gallon double walled tanks. Single wall tanks 6000, 12,000 & 20,000 gallons. Salem, OR. Peter 503-881-9803



STORAGE CONTAINERS: 20' & 40', wind and weather tight. 1 year warranty on leaks. Delivery on a tilt bed trailer. Viking Cargo Containers Inc. CALL/ TEXT 541-229-7280
www.VikingCargoContainers.com

Containment Fuel Tank, 1000 gallons, 110V pump, meter and filter, \$4500. Eagle-Creek, OR. 503-793-1138

878 Generators



Cat gen, 60 KW, 3 phase, can be wired for 1 phase. 131 hours, including auto trans switch, diesel tank. Very nice condition, \$9000 OBO. Quincy, WA. 509-750-6439

Your Leading Source for Irrigation Supplies

HP Pipe & Supply
• Drip Irrigation • Filtration • Design
598 Baseline, Cornelius, OR 97113
Phone (503) 357-4217
www.hpspipe.com
info@hpspipe.com

WATER MASTER SERIES AND EVERGREEN
SUPERIOR SERVICE & DESIGN
• All your needs for irrigation parts service
• We build custom equipment for your special needs.
• Hose replacements & fusion repairs
• Transport Tanks • Rental Returns & Used Equipment
• US Dairy Waste Equipment

VALLEY WORKMAN
Truck Equipment
• Full Service
• Alterations
• Dump bodies • Hoists
• Farmbeds • Flatbeds
VALLEY FAB
10910 Portland Rd. NE • Brooks, OR
Call: 503-792-3739 • Fax: 503-792-3738

END OF SEASON SPECIALS!
Winterize and Repair your equipment now so it's ready to work for you next season!
ERNST IRRIGATION
ccb# 185365

TRAVELER SERVICE*
Annual service and inspection **10% OFF PARTS & LABOR**

PANEL INSPECTIONS*
Service Includes the following:
• Loose connections • Noisy starters
• Rusty components • Water damage
• Check for signs of heat build-up
10% OFF PARTS & LABOR

VFD SERVICE*
• Inspection
• Change filters
10% OFF PARTS & LABOR

PUMP SERVICE*
Great time to have bearings, packing, and seals checked out!
10% OFF PARTS & LABOR

Special valid for work scheduled by Jan. 31, 2020.
*Additional fees may apply for parts and repairs.
www.ErnstIrrigation.com • (503) 633-1111
20179 Main St., St. Paul, OR 97137
Open Mon-Fri 8am-5pm; Sat 8am-2pm

878 Generators



30 KW Onan generator set, propane. 1 and 3 phase. 110V to 480V capable. 875 ACTUAL HOURS. Has cabinet with all side panels included. Very clean and well maintained, former Municipal machine. Needs nothing but the propane tank, \$3900. Located in Twin Falls, ID. Call 208-613-0050



GENERATORS: Used, low hour takeouts, 20kW to 2000kW, diesel, propane, & natural gas. Cooperstown, ND. We ship nationwide. 701-371-9526 or 701-367-4305
abrahamindustrial.com



2005 Onan 35 KW Gen-Set. Propane. 1-3 Phase. 110-480 Volt. Ford Industrial V6. Very low hours. In brand new Condition. \$7900. Located in Twin Falls ID. Call 208-613-0050

884 Well-Drilling Equip.

WS 31 Walker Near Drill Rig. \$16,500 OBO. Truck load of drill tools, \$6500 OBO. Sacramento Area. 530-742-2785

887 Irrigation Equip.

Pivots: Good, various lengths, all brands & late models. No rust. Plus buried wire. Call Keizer, OR. Cell 503-881-3232, 503-390-3210
WANTED to buy or lease in Marion County, Oregon. Surface Water Right from the Pudding River or a tributary thereof. Any acreage considered. 503-710-7579

BEST SELLERS ...
"...Sold everything in the herd but a couple of old bulls."
Kester Ranch, Cottage Grove, OR
Call 1-800-882-6789 and sell too!

894 Sawmill Equip.

Mobile Dimension 128: 1076 hours. LOADED. Hardly used, hydrostatic drive, Mobile Dimension trailer, \$26,000. Concrete, WA. (360)708-8302. If no answer, leave message.

896 Forklifts

Hyster H200 HS: 1989, 20K capacity, 4 control valves, 182" upright, 2 stage, 3 speed, automatic monotrol, Perkins diesel, side shift, good brakes, no leaks, 6' forks, full width carriage, e-brake. Runs Good! Hay Squeeze? \$20,000 Gaston, OR. 503-789-3726

Hyster Model H80XL: single pneumatic tires, diesel, side shift, \$8000. Gaston, OR. 503-789-3726

2015 Hoist P330 forklift, 33,000 lb capacity, 4450 hours, 6' forks hydraulic fork positioners. Side Shift, 2 stage mast, Cummins 3 speed auto, pneumatic tires, \$72,000. Gaston, OR. 503-789-3726

887 Irrigation Equip.

887 Irrigation Equip.

(70) Used Pivots: Engines, pumps. Garden Valley, ID. Call Mike at 208-420-1480, or see www.pivotsplus.com

WANTED: 6" ringlock aluminum irrigation pipe with valves. Oregon 503-710-7577



Westinghouse IRRIGATION/ HYDRANT PUMP assembly: 100hp, 480/277v, 3ph 1500 gpm, 150"Lx55"Wx45"H, soft start controller/ panel, \$6400 OBO. Ferndale, WA. 360-380-2907

WANTED: irrigation main line, 5", 6" and 8" supply hydrants. Wade rain and/ or Ringlock. Salem or surrounding area, OR. 503-437-4833

Drip Tube: .26gph at 30" centers, 350 rolls, \$75 per roll. Lafayette, OR. 503-437-4833

(3) 1/4 mile wheel lines with newer movers, (1) 4", (2) 5", \$6000 for all. Toppenish, WA. Call/ Text 509-840-2488

IRRIGATION EQUIPMENT
BOUGHT. SOLD. RENTAL.
Design of Effluent Handling Systems
- Gates, Valves & Aerators
New & Used Parts
• Aluminum Pipe • Certalok
• Siphon Tubes • HDPE
• Sand Media Filters
• Wheel Lines • Pumps
PACIFIC SOUTHWEST IRRIGATION
Office: (209) 460-0450
Fax: (209) 982-1832
www.pacsouthwestirr.com
Carlos (209) 481-7677
Jim (209) 986-0099
40-4-1/102

894 Sawmill Equip.

Mobile Dimension 128: 1076 hours. LOADED. Hardly used, hydrostatic drive, Mobile Dimension trailer, \$26,000. Concrete, WA. (360)708-8302. If no answer, leave message.

896 Forklifts



Hyster H200 HS: 1989, 20K capacity, 4 control valves, 182" upright, 2 stage, 3 speed, automatic monotrol, Perkins diesel, side shift, good brakes, no leaks, 6' forks, full width carriage, e-brake. Runs Good! Hay Squeeze? \$20,000 Gaston, OR. 503-789-3726

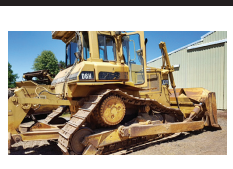
Hyster Model H80XL: single pneumatic tires, diesel, side shift, \$8000. Gaston, OR. 503-789-3726

2015 Hoist P330 forklift, 33,000 lb capacity, 4450 hours, 6' forks hydraulic fork positioners. Side Shift, 2 stage mast, Cummins 3 speed auto, pneumatic tires, \$72,000. Gaston, OR. 503-789-3726

2015 Hoist P330 forklift, 33,000 lb capacity, 4450 hours, 6' forks hydraulic fork positioners. Side Shift, 2 stage mast, Cummins 3 speed auto, pneumatic tires, \$72,000. Gaston, OR. 503-789-3726

887 Irrigation Equip.

899 Heavy & Indust. Eq.



D-6 H U-dozer with tilt and ripper, near new engine and hydraulic pump, \$79,500. Salem, OR. 503-362-3055

2004 CAT 247 Tracked Skid Steer: enclosed cab with heat, pilot controls, high flow auxiliary hydraulics, \$22,500. Clackamas, OR. 503-655-1125



2014 Shulte R320 rock picker: we picked all our rocks, now it's your turn! 200 hours, like new condition, \$13,500. Kimberly OR. 541-934-2015



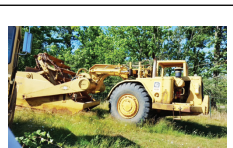
2008 JLG 600AJ boom lift, 60', Deutz diesel, 4x4, 2460 hours. Rebuilt in 2015. 240/120V generator, solid tires. Nice, \$28,000. Gaston, OR. 503-789-3726



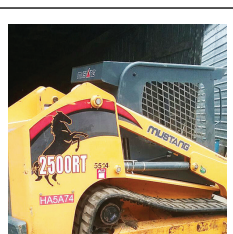
Cat D7F dozer, 94N series, power shift, cab, U-blade, 75% U/C, #25 cable unit, Cat #70 pull scraper, package \$24,500. Good condition. Camas, WA. 360-607-1646

REPLACEMENT DECAL SETS

Construction, Forestry & Ag Equipment. Fast, Knowledgeable, Reliable Service. 215-536-5339 email: info@CustomServicesCompany.com
Thousands of sets, Old & New, in our digital inventory. **www.QuipCal.com**



CAT 623-B: Self-loading scraper, good condition, Reduced \$29,500. Salem, OR. 503-362-3055



2014 Mustang 2500RT track steer, 1827 hours, \$40,000. Ingersoll Rand Air compressor P175WD, Deutz, 54.5, \$2400. Myrtle Point, OR. 541-260-4114



2005 Kobelco 200: SK200SR LC Model, Isuzu motor, 7400 hours, O-tail swing, hydraulic thumb, runs good, \$36,000. Gaston, OR. 503-789-3726



2010 Cat 307d, 3500 hours, 2 buckets, blades, \$47,000. 2016 John Deere 85G excavator, hydraulic thumb, \$80,000. Silverton, OR. 503-932-0766

BEST SELLERS ...
"...Sold everything in the herd but a couple of old bulls."
Kester Ranch, Cottage Grove, OR
Call 1-800-882-6789 and sell too!

899 Heavy & Indust. Eq.



Sullair 185 CFM Air Compressor. 4 cylinder. gas GM Industrial engine. 1400 Hours. New tires. Well maintained and everything works properly. WORK READY. \$3900. Located in Twin Falls ID. Call 208-613-0050

CAT D4D: straight blade, hydraulic tilt, power shift, free spool winch, arch, pin-on brush rake. Ex-government, \$28,500. Myrtle Creek, OR. 541-863-6968



2002 Sullair 185 CFM air compressor. John Deere Diesel. Trailer mounted. Clean one owner, well maintained and runs and operates properly, \$7200. Located in Twin Falls ID. Call 208-613-0050

Nyssa Tractor & Implement
Our yard has 5 miles of road, the rest is Farm Machinery & Parts.
www.nyssatractor.com
Toll Free (833) 372-4020
Nyssa, OR

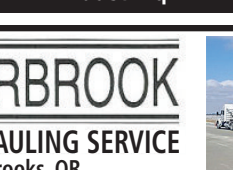
ASSOCIATED TRACTOR SERVICE INC.
NEW • USED • REBUILT PARTS PARTS • SERVICE • EQUIPMENT
PARTS ★ SERVICE ★ EQUIPMENT
• Used Parts
National Locator Services
• BEGE Hydraulic Pumps & Parts
Satisfaction Guaranteed Since 1954
800-735-1301 • 209-466-3003
1323 W. Charter Way, Stockton, CA 95206-1110

BIG TRACTOR PARTS, INC.
~ GEARED FOR THE FUTURE ~
STEIGER TRACTOR SPECIALIST
• 1. We are your source for new & used Steiger drivetrain parts Series 1 - 9300 Series.
• 2. We rebuild Spicer manual transmissions, Fugi power shift transmissions, dropboxes & axle with ONE YEAR WARRANTY!
• 3. We now rebuild computer control boxes for Steiger tractors 1982-1999.
800-982-1769
www.bigtractorparts.com

NEW, USED, AND REMAN PARTS
TOLL FREE: 1-877-928-1646
32427 OLD HWY 34, TANGENT, OR 97389

Combine Parts
Rebuild Kits
Seats w/Air Suspension \$1,025
Reman Engines for Case/IH, John Deere, and Ford
JD 4010, 4020 Clutch Kits \$715
SALVAGED TRACTORS
Farmland Tractor Supply
Parts@Farmlandtractor.com

899 Heavy & Indust. Eq.



RIVERBROOK FARM • HAULING SERVICE
Brooks, OR
WE HAUL!
• Building Supplies • Farm Equipment
• Construction Equipment • Heavy Equipment
• Granular Fertilizer • Grain/Wheat
888-393-1819 • www.riverbrooktrucking.com

Clockwork
Make This Your First Choice for a One Pick Blueberry Variety.
FALL CREEK FARM & NURSERY, INC.
1.800.538.3001 | www.fallcreeknursery.com