

887 Irrigation Equip.

(70) Used Pivots: Engines, pumps. Garden Valley, ID. Call Mike at 208-420-1480, or see www.pivotsplus.com



IRRIGATION EQUIPMENT:

(14) Used 1/4 mile wheel lines, 5hp Gheen single frame field king 6', 5hp Gheen dual frame ranch king 5', 8hp Travis single frame 5', 4" & 5" pipe, \$6500 each. Various mover frames also available. Dixon, CA. 800-734-8859



316 SS Gould Pump: with 250 HP motor, 1625 GPM, 300 ft.hd., excellent condition, \$9500. Hermiston, OR. 541-571-0514 email: 53hchull@gmail.com



Westinghouse IRRIGATION/ HYDRANT PUMP assembly: 100hp, 480/277v, 3ph 1500 gpm, 150"Lx55"Wx45"H. Includes soft start controller/ panel. Good condition, \$6400 OBO (shipping extra). Ferndale, WA. 360-380-2907

Pivots: Good, various lengths, all brands & late models. No rust. Plus buried wire. Call Keizer, OR. Cell 503-881-3232, 503-390-3210

"BEST FARM PAPER AROUND!" Gerald Stanton • Granite Falls, Wash. Subscribe! Call 1-800-882-6789

IRRIGATION EQUIPMENT
BOUGHT. SOLD. RENTAL.
Design of Effluent Handling Systems
• Gates, Valves & Aerators
New & Used Parts
• Aluminum Pipe • Certa-lok
• Siphon Tubes • HDPE
• Sand Media Filters
• Wheel Lines • Pumps

PACIFIC SOUTHWEST IRRIGATION

Office: (209) 460-0450
Fax: (209) 982-1832
www.pacsouthwestirr.com
Carlos (209) 481-7677
Jim (209) 986-0099
40-4-1102

890 Packing/ Processing Eq.

• Small hazelnut shelling line, complete with kernel sizing drum, \$12,000.
• In bin "solid state" nut drying system with 6 bin stations including 20 large and 10 small Calpine drying bins, \$16,000.
• Large nut air blank eliminator, and sizing drums for both hazelnuts and walnuts, \$8000. Dundee, OR. Call for appointment 503-538-5496 no texts

896 Forklifts



2011 Harlo Forklift, 6500 hp, 1720 hours, tier 3 cummins, \$45,000. Nyssa, OR. 541-372-5671



ADVERTISING IN CAPITAL PRESS IS A CASH COW!
CALL TODAY TO PLACE YOUR AD
1-800-882-6789
FAX (503) 370-4383
CapitalPress.com

896 Forklifts



2015 Hoist P330 forklift, 33,000 lb capacity, 4450 hours, 6' forks hydraulic fork positioners. Side Shift, 2 stage mast, Cummins 3 speed auto, pneumatic tires, \$72,000. Gaston, OR. 503-789-3726

Hyster Model H80XL: single pneumatic tires, diesel, side shift, \$8000. Gaston, OR. 503-789-3726

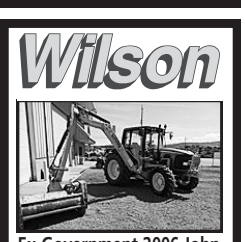


2007 HYSTER H-80FT finger tip, Cummins diesel, 3 stage 185" lift, side shift, 4th valve, serviced and ready, \$10,750. McMinnville, OR. Call/ Text 503-550-7625 www.SpringHollowEquip.com



Hyster H200 HS: 1989, 20K capacity, 4 control valves, 182" upright, 2 stage, 3 speed, automatic monotrol, Perkins diesel, side shift, good brakes, no leaks, 6' forks, full width carriage, e-brake. Runs Good! Hay Squeeze? \$20,000. Gaston, OR. 503-789-3726

899 Heavy & Indust. Eq.



Ex-Government 2006 John Deere 6320 Brush Cutter 100HP, Erops A/C and heated cab, 4x4, joy stick controlled side boom Diamond flail cutter, 3 pt, pto, good tires, 1,082 hrs, well maintained and very clean.....\$69,500



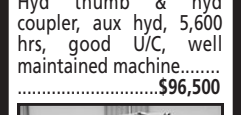
2014 Fecon FTX 1281, A/C & Heated Cab
Mulching head, good U/C, winch, 2,500 hrs, back up camera. \$106,500



2012 Cat 312EL, A/C & Heated Cab
Hyd thumb and hyd coupler, aux hyd, good U/C, 4,400 hrs, well maintained machine.....



2013 Cat 320EL, A/C & Heated Cab
Hyd thumb & hyd coupler, aux hyd, 5,600 hrs, good U/C, well maintained machine.....\$96,500



2013 Deere 650K XLT, 6-way blade
Rear ripper, good U/C, 3,378 hrs, nice clean machine.....\$74,500



2015 Doosan DL300-5, Erops A/C & Heated Cab GP bucket, hyd coupler, 3rd valve, good radial 23.5x25 tires, tight machine.....\$106,500

Financing Available Trades Accepted

Randy
541-830-3966
Cell# 541-944-5067
White City, OR
www.wilsonsequipment.net

899 Heavy & Indust. Eq.



RIVERBROOK FARM • HAULING SERVICE
Brooks, OR

WE HAUL!

- Building Supplies • Farm Equipment
- Construction Equipment • Heavy Equipment
- Granular Fertilizer • Grain/Wheat

888-393-1819 • www.riverbrooktrucking.com

899 Heavy & Indust. Eq.

CEC Screen It, 5x12 screen, \$50,000. Pilot Rock, OR. 541-969-8645

WANTED: Cone crusher for small operation to re-crush river rock. Oregon. Lloyd 503-769-6110



2014 Shulte R320 rock picker: we picked all our rocks, now it's your turn! 200 hours, like new condition, \$15,000. Kimberly OR. 541-934-2015



JCB 1400B loader/backhoe, 1 loader & 3 backhoe buckets. Either parts or project machine, \$4500 OBO. Battle Ground, WA. area. 360-843-7163 raralst@gmail.com



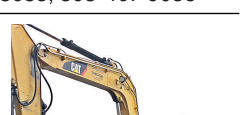
2008 JLG 600AJ boom lift, 60', Deutz diesel, 4x4, 2460 hours. Rebuilt in 2015. 240/120V generator, solid tires. Nice, \$28,000. Gaston, OR. 503-789-3726



2004 CAT 247 Tracked Skid Steer: enclosed cab with heat, pilot controls, high flow auxiliary hydraulics, \$22,500. Clackamas, OR. 503-655-1125



Dresser 650B excavator, 75,000#, 12' wide, Mercedes power, new batteries, hydraulics, travel, steering and boom/ thumb function is good, everything works. Bad glass, missing engine cover, \$17,850. The Dalles, OR. 800-748-8061 Video avail



Cat D7F dozer, 94N series, power shift, cab, U-blade, 75% U/C, #25 cable unit, Cat #70 pull scraper, package \$24,500. Good condition. Camas, WA. 360-607-1646

REPLACEMENT DECAL SETS
Construction, Forestry & Ag Equipment. Fast, Knowledgeable, Reliable Service. 215-536-5339 email: info@CustomServicesCompany.com
Thousands of sets, Old & New, in our digital inventory. www.QuipCal.com

902 Farm Equip. Parts

902 Farm Equip. Parts

Nyssa Tractor & Implement

Our yard has 5 miles of road, the rest is Farm Machinery & Parts.
www.nyssatractor.com
Toll Free (833) 372-4020
Nyssa, OR

BIG TRACTOR PARTS, INC.

~ GEARED FOR THE FUTURE ~

STEIGER TRACTOR SPECIALIST

- 1. We are your source for new & used Steiger drivetrain parts Series 1 - 9300 Series.
- 2. We rebuild Spicer manual transmissions, Fugi power shift transmissions, dropboxes & axle with ONE YEAR WARRANTY!
- 3. We now rebuild computer control boxes for Steiger tractors 1982-1999.

800-982-1769
www.bigtractorparts.com

899 Heavy & Indust. Eq.



RIVERBROOK FARM • HAULING SERVICE
Brooks, OR

WE HAUL!

- Building Supplies • Farm Equipment
- Construction Equipment • Heavy Equipment
- Granular Fertilizer • Grain/Wheat

888-393-1819 • www.riverbrooktrucking.com

899 Heavy & Indust. Eq.

WANTED: heavy duty ROCK PICKER, easy to operate, adjustable size screens, mid to large size for sandy soils with lots of rocks. Salem/ surrounding area, OR. 503-585-9835



D-6 H U-dozer with tilt and ripper, near new engine and hydraulic pump, \$79,500. Salem, OR. 503-362-3055

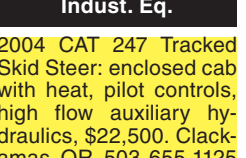
CASE INDUSTRIAL PARTS
We sell genuine, after market, and used CASE parts at discount prices nationwide. Call For Free Catalog.
CENTRAL EQUIPMENT AFTER MARKET & USED PARTS
Medford, OR
(888) 593-8749

Quality Used EQUIPMENT & ATTACHMENTS
• INDUSTRIAL
• COMMERCIAL
Please visit our Website www.amtractor.com for a complete list of Machines and Attachments

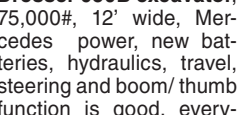
American Tractor
Our Toll Free # 888-499-8980
Call Cameron Noble or Eric Hunt
CENTRAL POINT, OR

899 Heavy & Indust. Eq.

902 Farm Equip. Parts



Dresser 650B excavator, 75,000#, 12' wide, Mercedes power, new batteries, hydraulics, travel, steering and boom/ thumb function is good, everything works. Bad glass, missing engine cover, \$17,850. The Dalles, OR. 800-748-8061 Video avail



Cat D7F dozer, 94N series, power shift, cab, U-blade, 75% U/C, #25 cable unit, Cat #70 pull scraper, package \$24,500. Good condition. Camas, WA. 360-607-1646

REPLACEMENT DECAL SETS
Construction, Forestry & Ag Equipment. Fast, Knowledgeable, Reliable Service. 215-536-5339 email: info@CustomServicesCompany.com
Thousands of sets, Old & New, in our digital inventory. www.QuipCal.com

902 Farm Equip. Parts

REPLACEMENT DECAL SETS
Construction, Forestry & Ag Equipment. Fast, Knowledgeable, Reliable Service. 215-536-5339 email: info@CustomServicesCompany.com
Thousands of sets, Old & New, in our digital inventory. www.QuipCal.com

902 Farm Equip. Parts

902 Farm Equip. Parts

902 Farm Equip. Parts

NEW, USED, AND REMAN PARTS
TOLL FREE: 1-877-928-1646
32427 OLD HWY 34, TANGENT, OR 97389



Seats w/Air Suspension \$1,025
JD 4010, 4020 Clutch Kits \$715



Farmland Tractor Supply
Parts@Farmlandtractor.com
41-3/100

902 Farm Equip. Parts

TR96 New Holland combine, good condition, shedded, pickup and cutting head headers, \$30,000. Molalla, OR. 503-951-7338

Buying or Selling
Capital Press is here to help you!
1-800-882-6789 or FAX 503-370-4383
CapitalPress.com

902 Farm Equip. Parts

ASSOCIATED TRACTOR SERVICE INC.
NEW • USED • REBUILT PARTS
PARTS • SERVICE • EQUIPMENT
PARTS ★ SERVICE ★ EQUIPMENT

• Used Parts National Locator Services
• BEGE Hydraulic Pumps & Parts

Satisfaction Guaranteed Since 1954
800-735-1301 • 209-466-3003
1323 W. Charter Way, Stockton, CA 95206-1110

19th Annual WILLAMETTE VALLEY AG EXPO

ANTIQUE FARM EQUIPMENT SHOW

Featuring Hobbyist Tractors & Farm Equipment
Sponsored by Farmland Tractor

Tue, Nov. 12 • Wed, Nov. 13 • Thur, Nov. 14
9am-6pm 10am-9pm 10am-5pm

Bring Your Favorite Antique Or Classic To Albany!
30 years old or older; steel wheels welcome.
2nd and 3rd generation owners welcome.
Pizza social Wednesday evening

RULES FOR WVAE ANTIQUE EQUIPMENT DISPLAYS:

- Any production manufactured piece that would be used as part of a farm operation will be considered. Tractors, combines, balers, threshers, swathers, tillage tools, haying tools, are a few examples of desired units.
- All displays will be required to be in clean, safe and attractive condition. Our objective is to display pieces that attract attention for show purposes. Owner's names and declared use of the display piece can or will be exhibited on the display unless requested otherwise.
- All displays will comply with Fire and Life Safety regulations and all Linn County Terms and Conditions for all exhibitors.
- Move out will begin at 5:00 PM November 14, and all equipment will be required to be out of the buildings by 12 noon, November 15.
- Equipment will be displayed during hours open to the public. All displays indoors or under cover.

MOVE IN: SUNDAY, NOVEMBER 12th - 1:00pm - 6:00pm.
MONDAY, NOVEMBER 13th - 8:00am - 8:00pm
TUESDAY, NOVEMBER 14th - 7:00am - 9:00am - CARRY-INS ONLY

MOVE OUT WILL BEGIN 5:00 PM THUR., NOV. 14th, AND MUST BE COMPLETED BY 12 NOON ON FRIDAY, NOV. 15th.
Staging can be arranged.

To request your ENTRY FORM or for more information, call 541-990-0183.
Write to Willamette Valley Farm Collectors, PO Box 774, Jefferson, OR 97352.

907 Nursery Equip. & Supplies

GET YOUR GREENHOUSE READY FOR WINTER

Oregon Valley Greenhouses
Greenhouse Manufacturing & Supplies
503-678-2700
www.ovg.com # info@ovg.com
20357 Hwy 99E # Aurora, OR

- ✓ REPAIR POLY CARBONATE ENDS
- ✓ INSPECT AND REPLACE POLY FILM
- ✓ CHECK CONDITION OF WIRE LOCK
- ✓ TAKE OFF YOUR SHADE CLOTH
- ✓ LOCK ROLL-UPS BACK INTO PLACE
- ✓ TEST YOUR HEATER

Corrugated Poly Carbonate sheets. 4.25' wide in lengths 8', 10', 12', 14', 16' and 24'
\$1.00 per sq ft