

**THE CAPITAL PRESS SALES TEAM IS HERE TO SERVE YOU!**

- Real knowledge
- Real people
- Real results!



**Greg Hains**  
W Washington, Portland - Eastside to the Columbia Gorge and Outside the Pacific Northwest  
1-800-882-6789  
ghains@capitalpress.com



**Stefani Evers**  
NW Oregon, N. Willamette Valley (503) 871-7957  
severs@capitalpress.com



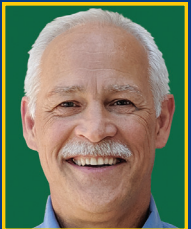
**Joe Hudon**  
NE Oregon, SE Washington (307) 620-2631  
jhudon@capitalpress.com



**Pat McKenzie**  
S. Willamette Valley SW & Central Oregon (541) 521-9008  
pmckenzie@capitalpress.com



**Anne Ranney**  
S Oregon & California Territory (541) 591-3667  
aranney@capitalpress.com



**Lance Marshall**  
NE Washington N Idaho (253) 221-7000  
lmarshall@capitalpress.com



**JoAnn Vanderwey**  
S. Idaho, NE Nevada & SE Oregon (208) 880-4334  
jvanderwey@capitalpress.com

**DEADLINE FOR CLASSIFIED DISPLAY ADS:**  
Weds. @ 10AM  
503-364-4431

**DEADLINE FOR CLASSIFIED LINE ADS:**  
Weds. @ Noon  
503-364-4431

**Capital Press**  
1-800-882-6789  
CapitalPress.com

**819 Sporting Goods /Hunting**

**Albany Rifle & Pistol Club**  
**2019 FALL GUN & SPORTSMAN SHOW**  
Sept. 28<sup>th</sup> & 29<sup>th</sup>  
Linn County Fairgrounds  
Albany, Oregon  
I-5 Exit 234  
**FREE PARKING**  
**400 TABLES OF GUNS & AMMO**  
Saturday 9am-5pm  
Sunday 9am-3pm  
**ADMISSION \$7<sup>00</sup>**  
**Kids 12 Years & Under, and ARPC Members have Free Admission**  
**541-491-3755**  
**www.arpc.info**  
37-3-31106

**821 Christmas Trees**

**Christmas Trees For Sale**  
**CHRISTMAS TREES**  
(10,000) Noble: 3', 4', 5' and some small 6'.  
(2,000) Douglas Fir: 5' and 6'. Colton, OR.  
503-314-0145

**Buyer - Looking for 8' to 12' NOBLE, GRAND, NORDMAN** (some Doug). Can fill with other smaller varieties and sizes if needed. Also looking for: 1000 table top Noble Fir. Have own trucking. Text or call 858-344-0979

**WANTED: 500 natural Nobles 6'-10' & 1000 cultured Nobles 6-7'.** Vancouver, WA. 360-513-7822

Cash Paid. Top Prices. Christmas Tree Fields. Any Condition. Oregon, Washington. 503-873-6774, 503-551-5809



Christmas tree equipment: Evergreen baler with shaker, drill jaw, and lights, \$10,000. DeJong jaw baler (converted to Evergreen twine cans), \$6000. DeJong double shaker (3 point, 540 PTO), \$1000. (2) belt elevators, \$1500 each. Approximately 150 helicopter slings, \$500 or all for \$16,000. Monroe, OR. 541-953-4890, 541-915-1234

**Capital Press 4 Weekly It Work!**  
With Capital Press, I get more calls than any other type of ad. This is the best advertising bang for the buck I have had!  
Billy Hendrix  
Pacific Coast Handlers  
**Capital Press**  
800-882-6789  
CapitalPress.com  
**Capital Press Ag Weekly**

**822 Nursey Stock - Plants**

**824 Seed**

**824 Seed**

**824 Seed**

**824 Seed**

**824 Seed**

**824 Seed**

**824 Seed**

**824 Seed**

**824 Seed**

**824 Seed**

**824 Seed**

**821 Christmas Trees**

**Greenbriar Ag Management Offering Professional Christmas Tree Services:** Experienced, quality work, planting through harvesting, stump grinding. Sales, brokering, licensed & bonded contractor. Farm & Forest Labor License #10628 Stayton, OR. 503-932-2323  
greenagmngt@wvi.com



Hello, local family wants your Christmas Trees. Cash buyers. Need approx 3000 different sizes and species. Thank you. 503-880-5820

**WANTED: Noble Fir Boughs, Oct/ Nov.** Troutdale, OR. 503-348-5902

**822 Nursey Stock - Plants**

Sacajawea, Doris, York, Webster **Hazelnut Trees**, 4 years old, \$6-\$8. **Blueberries, Duke, Legacy:** 3 year old plants, \$2.50 each. Crabtree, OR. 503-871-9114

(2500) 3rd leaf Yamhill Hazelnut trees in pots, \$5 each. Stayton, OR. 503-932-3762

Blueberry (20 varieties), Raspberry, Marion, Boysen, Currant, Grape, Kiwi, Strawberry Plants. Canby, OR. 503-730-4788  
www.canby.com/morningshade

**EMERALD GREEN ARBORVITAE:** rooted cuttings and 2-1/4", liners available. Forest Grove, OR. Call 503-359-7540



**PollyO and McDonald Hazelnut Trees**  
Potted / Bare Root  
Newberg, OR.  
503-858-7865

Leyland Cypress (container or field grown), Emerald Green Arborvitae, Green Giant Arb, Otto Luyken Laurel, Dawn Redwood. All B&B, excellent quality, vigorous plants. Shipping available. Troutdale, OR. 503-348-5902



Hazelnut Trees: McDonald, Jefferson, Yamhill, Wepster, York, Eta, Theta, Felix. Dayton, OR. 503-864-4422

**Don't Miss Out!**  
Start your Hazelnut Orchard with larger trees: 3 years, 2 gallon Jefferson trees, while supplies last, \$7. Silverton, OR. 503-873-5940

**822 Nursey Stock - Plants**

**824 Seed**

**824 Seed**

**824 Seed**

**824 Seed**

**824 Seed**

**824 Seed**

**824 Seed**

**824 Seed**

**824 Seed**

**822 Nursey Stock - Plants**

**Hedge & Border Varieties:** Leyland Cypress, Green Giant, Arborvitae, and Laurels. Excellent for road and property barriers. **Severson Farms, Springfield, OR.** Call 541-228-6085

**Blueberry Plants**



Northern Highbush  
Southern Highbush  
Rabbiteye

**Call or visit us online today.**

**(503) 873-1200**

www.oreblueberry.com

**824 Seed**

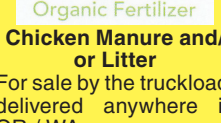
60,000 lbs VNS, clean crested wheat in 50 lb bags, \$2.50/ lb. Silver Lake, OR. 541-576-4842

**Certified Roslyn soft white winter wheat,** cleaned and treated. Forest Grove, OR. 503-310-2524

Pasture Seed \$1.20/ lb. Lawn Seed \$1.20/ lb. Wheat Straw \$120/ ton. Grass Hay \$180/ ton. Wheat \$6/ bag. Rickreall, OR. 503-623-6922

**Quality VNS Alfalfa Seed:** \$2.00/ lb. Touchet, WA. Chris Kregger 509-394-2400

**825 Fertilizer**



**PotentGrow 5-2-2 organic fertilizer pellets.** Product of Washington State. WSDA approved for organic use. For pricing and freight quotes call/ text 541-602-9477 or e-mail: info@potentgrow.com

**826 Organic**

**Organic and Conventional Round Bale Silage/Haylage,** \$40 to \$55 bale. Delivery Possible. Scio, OR. 503-930-2738

900 Bales of Organic Haylage: good quality, \$55/ bale. Scio, OR. 503-932-1005

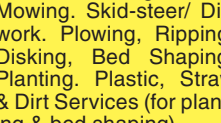
**CERTIFIED ORGANIC Alfalfa,** 3x4 bales, also 3 string bales. Othello, WA. 509-989-2141, 509-592-3499

**828 Misc for Sale**

**Yamata HD upholstery sewing machine** with table, light, cover. Like new, \$1000. Newberg, OR. 971-330-5096

**835 Hemp**

**KLZ Farm Boyz Ag Services**  
**No Job Is Too Big or Too Small!!!!**  
Brush Mowing, Field Mowing, Skid-steer/ Dirt work. Plowing, Ripping, Disking, Bed Shaping, Planting, Plastic, Straw & Dirt Services (for planting & bed shaping)  
zack@klzfarmboyz.com  
www.klzfarmboyz.com  
Zack 541-576-4208  
Medford, OR. Area



Nearly new **Powell Hemp Harvester** (Model 6031) with factory spare parts. Requires 80 HP tractor. Selling for \$25,000, (paid \$39,700). Vinton, CA. 775-849-3811

**835 Hemp**

**835 Hemp**

**835 Hemp**

**835 Hemp**

**835 Hemp**

**835 Hemp**

**835 Hemp**

**835 Hemp**

**835 Hemp**

**835 Hemp**

For RENT: 20 acres organic HEMP acreage. Aurora, OR. Contact Ed: 503-704-9314

**CHECK line ads online at CapitalPress.com**



**AMERI-PROCESS**

**Whole Plant Hang Drying**

**Biomass Drying**

**Trimming**

**Hemp Storage**

**Full Service**

**Ameri-process.com**  
**661-565-5433**  
SHERIDAN, OR  
37-3-3109

**869 Livestock Equip. & Supplies**

**Livestock Panels:** 16' (6) rail, (3) brace, \$128 each. 12' panels, (2) rail, (2) brace, \$96. Bow gates, all lengths and sizes. These panels are new Green color, hundreds available. **Heavy 16' Feeder Panels,** \$330 each. La Grande, OR. 541-805-9279, 541-963-6258

**Kiln Dried Shavings:** Smaller truck loads now available. Hogfuel also available. Call for details. Forest Grove, OR. 503-849-0216

**Polydome Calf Nursery:** Hutches available for various climates. Western Polydome, Inc. Monroe, WA. 800-822-5837

Rectangular, glass dairy MILK BOTTLES with 56mm mouth. Mainly 1/2 gallon but a few gallon as well. 50¢ each. Kennewick, WA. 509-783-4550



**NEW MANURE SPREADER**  
400 bu. • BUY OR RENT  
Call Scott at Barr-Tech  
Compost/Organics Recycling  
Authorized Dealer of PPK RITE Spreaders  
509-590-0437  
www.Barr-Tech.net  
Sprague, WA 39-3-1004

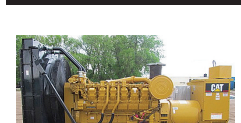
**875 Tanks & Storage**

**FUEL TANKS:** (1) 5000 gallon UL2085, split 2500/2500, 1000, 2000, 3000 and 5000 gallon double walled tanks. Single wall tanks 6000, 12,000 & 20,000 gallons. Salem, OR. Peter 503-881-9803

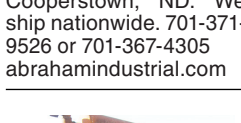
Plastic molasses or liquid tank, 8000 gallon. Used dairy equipment also available. Salem, OR. 503-551-1578



4700 gallon mild steel tank, 10'x8', \$2500. Hermiston, OR. 541-571-0514  
email: 53hchull@gmail.com



**GENERATORS:** Used, low hour takeouts, 20kW to 2000kW, diesel, propane, & natural gas. Cooperstown, ND. We ship nationwide. 701-371-9526 or 701-367-4305  
abrahamindustrial.com



45 KW Onan generator set, propane. 1 and 3 phase. 110V to 480V capable. 875 ACTUAL HOURS. Has cabinet with all side panels included. Very clean and well maintained, former Municipal machine. Needs nothing but the propane tank, \$3900. Located in Twin Falls, ID. Call 208-613-0050

**887 Irrigation Equip.**

**887 Irrigation Equip.**

**887 Irrigation Equip.**

**887 Irrigation Equip.**

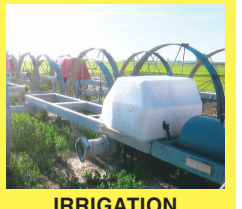
**887 Irrigation Equip.**



Westinghouse IRRIGATION/ HYDRANT PUMP assembly: 100hp, 480/277v, 3ph 1500 gpm, 150"Lx55"Wx45"H. Includes soft start controller/ panel. Good condition, \$6400 OBO (shipping extra). Ferndale, WA. 360-380-2907

**Pivots:** Good, various lengths, all brands & late models. No rust. Plus buried wire. Call Keizer, OR. Cell 503-881-3232, 503-390-3210

**(70) Used Pivots:** Engines, pumps. Garden Valley, ID. Call Mike at 208-420-1480, or see www.pivotsplus.com



**IRRIGATION EQUIPMENT:**  
(14) Used 1/4 mile wheel lines, 5hp Gheen single frame field king 6', 5hp Gheen dual frame ranch king 5', 8hp Travis single frame 5', 4" & 5" pipe, \$6500 each. Various mover frames also available. Dixon, CA. 800-734-8859

**899 Heavy & Indust. Eq.**

**899 Heavy & Indust. Eq.**

**899 Heavy & Indust. Eq.**

**899 Heavy & Indust. Eq.**

**899 Heavy & Indust. Eq.**

**899 Heavy & Indust. Eq.**

**899 Heavy & Indust. Eq.**

**899 Heavy & Indust. Eq.**

**899 Heavy & Indust. Eq.**

**899 Heavy & Indust. Eq.**

**899 Heavy & Indust. Eq.**

**899 Heavy & Indust. Eq.**

**899 Heavy & Indust. Eq.**

**899 Heavy & Indust. Eq.**

**899 Heavy & Indust. Eq.**

**899 Heavy & Indust. Eq.**

**899 Heavy & Indust. Eq.**

**899 Heavy & Indust. Eq.**

**899 Heavy & Indust. Eq.**

**899 Heavy & Indust. Eq.**

**899 Heavy & Indust. Eq.**

**899 Heavy & Indust. Eq.**

**899 Heavy & Indust. Eq.**

**887 Irrigation Equip.**



316 SS Gould Pump: with 250 HP motor, 1625 GPM, 300 ft.h.d., excellent condition, \$9500. Hermiston, OR. 541-571-0514  
email: 53hchull@gmail.com

**"The Capital Press is IT!"**  
Lorin Zastoupil • Leaburg, Ore.  
Subscribe at 1-800-882-6789

**IRRIGATION EQUIPMENT**

**BOUGHT. SOLD. RENTAL.**  
Design of Effluent Handling Systems  
• Gates, Valves & Aerators  
**New & Used Parts**  
• Aluminum Pipe • Certa-Iok  
• Siphon Tubes • HDPE  
• Sand Media Filters  
• Wheel Lines • Pumps



**Office: (209) 460-0450**  
**Fax: (209) 982-1832**  
www.pacsouthwestirrig.com  
Carlos (209) 481-7677  
Jim (209) 986-0099  
36-4-1102

**899 Heavy & Indust. Eq.**

**899 Heavy & Indust. Eq.**

**899 Heavy & Indust. Eq.**

**899 Heavy & Indust. Eq.**

**899 Heavy & Indust. Eq.**

**899 Heavy & Indust. Eq.**

**899 Heavy & Indust. Eq.**

**899 Heavy & Indust. Eq.**

**899 Heavy & Indust. Eq.**

**899 Heavy & Indust. Eq.**

**899 Heavy & Indust. Eq.**

**899 Heavy & Indust. Eq.**

**899 Heavy & Indust. Eq.**

**899 Heavy & Indust. Eq.**

**899 Heavy & Indust. Eq.**

**899 Heavy & Indust. Eq.**

**899 Heavy & Indust. Eq.**

**899 Heavy & Indust. Eq.**

**899 Heavy & Indust. Eq.**

**899 Heavy & Indust. Eq.**

**899 Heavy & Indust. Eq.**

**899 Heavy & Indust. Eq.**

**890 Packing/ Processing Eq.**