

822 Nursey Stock - Plants



PollyO and McDonald Hazelnut Trees
Potted / Bare Root
Newberg, OR.
503-858-7865



Jefferson, Yamhill, and Wepster. Beautiful, nursery grown, large quantities. BUY 1000 Jefferson, GET 500 Jefferson FREE! Blue Heron Farm, Independence, OR. 503-838-3779

Sacajawea, Doris, York, Webster **Hazelnut Trees**, 4 years old, \$6-\$8. **Blueberries, Duke, Legacy:** 3 year old plants, \$2.50 each. Crabtree, OR. 503-871-9114



Hazelnut Trees: McDonald, Jefferson, Yamhill, Wepster, York, Eta, Theta, Felix. Dayton, OR. 503-864-4422

Hedge & Border Varieties: Layland Cypress, Green Giant, Arborvitae, and Laurels. Excellent for road and property barriers. **Severson Farms**, Springfield, OR. Call 541-228-6085



BIG SPLASH!
SMALL INVESTMENT.
Advertise today.

Capital Press
1-800-882-6789
CapitalPress.com

Blueberry Plants



Northern Highbush
Southern Highbush
Rabbiteye

"Providing superior plants and service for over 35 years."

(503) 873-1200
www.oreblueberry.com

822 Nursey Stock - Plants

EMERALD GREEN ARBORVITAE: rooted cuttings and 2-1/4" liners available. Forest Grove, OR. Call 503-359-7540



Start your Hazelnut Orchard with larger trees: 3 years, 2 gallon Jefferson trees, while supplies last, \$7. Silverton, OR. 503-873-5940

(2500) 3rd leaf Yamhill Hazelnut trees in pots, \$5 each. Stayton, OR. 503-932-3762

Blueberry (20 varieties), Raspberry, Marion, Boysen, Currant, Grape, Kiwi, Strawberry Plants. Canby, OR. 503-730-4788
www.canby.com/morningshade

824 Seed

Pasture Seed \$1.20/ lb. Lawn Seed \$1.20/ lb. Wheat Straw \$120/ ton. Grass Hay \$180/ ton. Wheat \$6/ bag. Rickreall, OR. 503-623-6922

Organic Crimson Clover Seed: germ/ purity test available. Canby, OR. 503-209-0685. jbronec@canby.com

Foundation Fawn Fescue: planting seed stock, \$1.95/ lb. Halsey, OR. 541-974-4501

Quality VNS Alfalfa Seed: \$2.00/lb. Touchet, WA. Chris Kregger 509-394-2400

60,000 lbs VNS, clean crested wheat in 50 lb bags, \$2.50/ lb. Silver Lake, OR. 541-576-4842

Certified Roslyn soft white winter wheat, cleaned and treated. Forest Grove, OR. 503-310-2524

825 Fertilizer



Chicken Manure and/or Litter
For sale by the truckload, delivered anywhere in OR./WA. **PotentGrow 5-2-2 organic fertilizer pellets.** Product of Washington State. WSDA approved for organic use. For pricing and freight quotes call/ text 541-602-9477 or e-mail: info@potentgrow.com

826 Organic

70 Tons Certified Organic Barley. Plump kernels, \$330 ton. Walla Walla, WA. 509-200-9325

CERTIFIED ORGANIC Alfalfa, 3x4 bales, also 3 string bales. Othello, WA. 509-989-2141, 509-592-3499

835 Hemp

Hemp Combine!
John Deere STS Hemp Combine



\$235,000
9670 STS with Hillco Sidehill leveler, 2,200 hrs. Clean Valley Machine.
Comes with Modifications for hemp or pieces for Grass Seed Harvest
503-932-9910
503-932-9934
Sublimity, Oregon

824 Seed

826 Organic

Organic and Conventional Round Bale Silage/ Haylage, \$40 to \$55 bale. Delivery Possible. Scio, OR. 503-930-2738

900 Bales of Organic Haylage: good quality, \$55/ bale. Scio, OR. 503-932-1005

835 Hemp

Funds Desired Equity Position

Funds desired/ equity position for HEMP processing and drying operation in **Central Valley and Southern Oregon** regions. 541-857-5941 leave message or call Mark 541-601-5130

CLEANING Plant STORAGE Building ACREAGE Rental Home

153.12 acres, seed cleaning plant and storage building (built new in 2007), rental house, 4 good wells, excellent soil for hazelnut, row crop, HEMP, and grass seed production. Just North of Junction City, OR. (off Hwy 99 West). 541-501-7747. frm96505@gmail.com

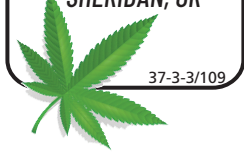
HEMP DRYING Facility Needed

Oregon HEMP co-op is seeking Ag storage buildings to run our drying operations through **Central Valley/ Southern Oregon** area. We pay a handsome percentage. Please call today to negotiate. Mark 541-601-5130 soorhempco-op@gmail.com



- Whole Plant Hang Drying
- Biomass Drying
- Trimming
- Hemp Storage
- Full Service

Ameri-process.com
661-565-5433



869 Livestock Equip. & Supplies

Livestock Panels: 16' (6) rail, (3) brace, \$128 each. **12' panels**, (6) rail, (2) brace, \$96. Bow gates, all lengths and sizes. These panels are new Green color, hundreds available. **Heavy 16' Feeder Panels**, \$330 each. La Grande, OR. 541-805-9279, 541-963-6258

Powder River Calf Squeeze Chute: Lightly used. Hubbard, OR. 503-981-9151 weekdays. 503-634-2553 Evenings/Weekends.

WANTED: Cattle Chute. It has to be a (Teco) 541-493-2456

872 Dairy Eq. & Supplies



(2) Paula CalfMom Automatic Calf Feeders; feeds 60 calves, \$25,000 OBO. Vale, OR. 541-212-7939

Jaylor 2575 Feed Wagon with computerized Digi-Star Scale, spare computer included, \$15,000. Gerber, CA. 530-385-1262

Dual Chamber Cow Waterbeds, installed in 2012, in good condition, 159 beds available. Buyer to pay for removal of beds from freestall barn, \$14,000. Gerber, CA. 530-385-1262



(2) Calf Bottle Trailers, 588, 3 quart bottles, \$4000/ each. Mesa, WA. 509-840-0141, dana@cfairy.com

Kiln Dried Shavings: Smaller truck loads now available. Hogfuel also available. Call for details. Forest Grove, OR. 503-849-0216

Buying or Selling
Capital Press is here to help you!
1-800-882-6789 or FAX 503-370-4383
CapitalPress.com

NEW MANURE SPREADER

400 bu. • BUY OR RENT
Call Scott at Barr-Tech Compost/Organics Recycling
Authorized Dealer of PIK RITE Spreaders
509-590-0437
www.Barr-Tech.net
Sprague, WA 37-3/104

887 Irrigation Equip.

WATER MASTER SERIES AND EVERGREEN
SUPERIOR SERVICE & DESIGN
• All your needs for irrigation parts service
• We build custom equipment for your special needs.
• Hose replacements & fusion repairs
• Transport Tanks • Rental Returns & Used Equipment
• US Dairy Waste Equipment

VÄLLEY WORKMAN
Truck Equipment
• Full Service
• Alterations
• Dump bodies • Hoists
• Farmbeds • Flatbeds

VÄLLEY FAB
CORP
10910 Portland Rd. NE • Brooks, OR
Call: 503-792-3739 • Fax: 503-792-3738

ERNST IRRIGATION

"We understand your water needs. Let our experienced staff assist you with all your water quality and quantity needs."

- PRODUCTS:**
- T and C 1/2" - 6"
 - Filtration
 - Valves
 - Sprinklers
 - Water Meters
 - Chemical Injection
 - Bandit Clamps
 - Aluminum Irrigation Fittings & Pipe 2" - 10"
 - Wheelines & Wheeline Fittings
 - Hard Hose Travelers
 - Linears • Pivots • K-Line POD Irrigation
 - Water Pumps
 - Steel Pipe & Fittings 1/2" - 12"
 - PVC Fittings & Pipe 1/2" - 18"
 - Low Volume/Micro Irrigation Drip Hose 1/2" - 2"
 - Angus Drag Hose 2 1/2" - 5" Suction & Discharge Hose
 - T-Bolt Clamps
 - Motor Bearings
 - Pump Packing
 - Controllers
 - Fish Friendly Screens
 - Victaulic Fittings
 - Camlock Fittings
- SERVICES:**
- Design & Consultation • Pumps & Panels, including Variable Frequency Drives • Traveler Repair, all makes & models • Field Fabrication
• Big Gun Rebuilding • Water Testing / Flow & Quality

www.ErnstIrrigation.com
20179 Main St., St. Paul, OR 97137
(503) 633-1111

872 Dairy Eq. & Supplies

Polydome Calf Nursery: Hutches available for various climates. Western Polydome, Inc. Monroe, WA. 800-822-5837

875 Tanks & Storage



4x4 flat bottom picker/fermenter: 304 2B stainless, forklift/ pallet jack lifting tubes, tapered design. Middleton, ID. Call Andy 208-860-9256 for pricing.

FUEL TANKS:

(1) 5000 gallon UL2085, split 2500/2500. 1000, 2000, 3000 and 5000 gallon double walled tanks. Single wall tanks 6000, 12,000 & 20,000 gallons. Salem, OR. Peter 503-881-9803

Plastic molasses or liquid tank, 8000 gallon. Used dairy equipment also available. Salem, OR. 503-551-1578

HOME FIRE PROTECTION

Each system includes a 3,000 gallon water tank, spray nozzle, shut off valve, fittings, hose and discharge pump ready to assemble and add water.

\$2,400
Contact Norman Waterbury LLC
541-510-3501 or nwaterbury@gmail.com

878 Generators

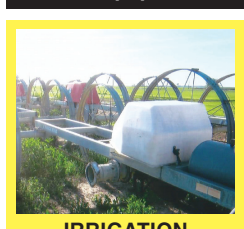


GENERATORS: Used, low hour takeouts, 20kW to 2000kW, diesel, propane, & natural gas. Cooperstown, ND. We ship nationwide. 701-371-9526 or 701-367-4305 abrahamindustrial.com



Multi-Quip 15 KVA generator, tow behind, 5200 hours. Good condition, \$7000. Winnemucca, NV. 775-625-3012

887 Irrigation Equip.



IRRIGATION EQUIPMENT:
(14) Used 1/4 mile wheel lines, 5hp Gheen single frame field king 6', 5hp Gheen dual frame ranch king 5', 8hp Travis single frame 5', 4" & 5" pipe, \$6500 each. Various mover frames also available. Dixon, CA. 800-734-8859

887 Irrigation Equip.

(70) Used Pivots: Engines, pumps. Garden Valley, ID. Call Mike at 208-420-1480, or see www.pivotsplus.com

WANTED: irrigation main line, 5", 6" and 8" supply hydrants. Wade rain and/ or Ringlock. Salem or surrounding area, OR. 503-437-4833

Mainline with valves, 21 pieces 6" Gheen and 22 pieces 5" Moore Rain, \$2/ foot. Bend, OR. 541-389-8963

Pivots: Good, various lengths, all brands & late models. No rust. Plus buried wire. Call Keizer, OR. Cell 503-881-3232, 503-390-3210



Westinghouse IRRIGATION/ HYDRANT PUMP assembly: 100hp, 480/ 277v, 3ph 1500 gpm, 150"Lx55"Wx45"H. Includes soft start controller/ panel. Good condition, \$6400 OBO (shipping extra). Ferndale, WA. 360-380-2907

Capital Press CLASSIFIEDS

1-800-882-6789
CapitalPress.com

IRRIGATION EQUIPMENT

- BOUGHT. SOLD. RENTAL.
Design of Effluent Handling Systems
• Gates, Valves & Aerators
New & Used Parts
• Aluminum Pipe • Certalok
• Siphon Tubes • HDPE
• Sand Media Filters
• Wheel Lines • Pumps

Office: (209) 460-0450
Fax: (209) 982-1832
www.pacsouthwestirr.com
Carlos (209) 481-7677
Jim (209) 986-0099

890 Packing/ Processing Eq.



• Small hazelnut shelling line, complete with kernel sizing drum, \$12,000.
• In bin "solid state" nut drying system with 6 bin stations including 20 large and 10 small Calpine drying bins, \$16,000.
• Large nut air blank eliminators, and sizing drums for both hazelnuts and walnuts, \$8000. Dundee, OR. Call for appointment 503-538-5496 no texts

893 Logging Equip.



1997 Kenworth T-800, N-14 Select Plus engine. RTLO14713A Transmission. DT403 Eaton rears. Electric Scales. Chain lift axle. 8'6" Bunks. 1997 General trailer. 8'6" bunk. Asking \$22,000. Eugene, OR. Call/ text John Lucas 541-968-2239



1997 Kenworth T-800, 3406E engine. RTLO18913B Transmission. DT403P Eaton Rears 4:11 ratio. Electric scales. 8' Bunk. 240" wheel base. 1980 Peerless Log Trailer. 8' bunk, \$36,000 OBO Eugene, OR. Call/ text John Lucas 541-968-2239

896 Forklifts



CAT Extendo Forklift 1003, 2,000 hours, \$26,500. Salem, OR. 503-569-9636

896 Forklifts



Brumann Co. AS-40 SIDE Loader forklift, diesel engine, hydro trans, both work great! Wt 16,300 lbs, designed to carry long loads thru narrow space. Lift cap. 8800 lbs, 11'3" down top of mast, 3 stage mast with free lift, 54" forks, \$16,500 OBO. McMinnville, OR. Call/ Text 503-550-7625 springhollowequip.com

Hyster Model H80XL: single pneumatic tires, diesel, side shift, \$8000. Gaston, OR. 503-789-3726



Toyota 5FG-15, 3000lb, 3 stage, side shift, Pneumatic, new paint, \$5850. McMinnville, OR. Call/ Text 503-550-7625 springhollowequip.com

"...Sold both bulls second week. Thanks!" Tiara Farm Port Townsend, Wash. You sell too at 1-800-882-6789.

Used Lift Trucks

Also New & Used Parts
All sizes, makes & prices
LIFT TRUCK SERVICE
888-890-1450
forkliftsales.com
Ellensburg, WA

899 Heavy & Indust. Eq.

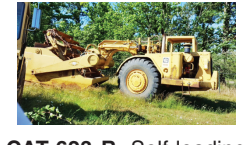
Crane Mats, 4'x20'. Saint Helens, OR. Call 503-396-1800



2010 Cat 307d, 3500 hours, 2 buckets, blades, \$47,000. 2016 John Deere 85G excavator, hydraulic thumb, \$80,000. Silverton, OR. 503-932-0766



CAT D5 DOZER U-BLADE: freespool winch, screens, sweeps. Good undercarriage. Ex-municipal, \$27,000. ESTACADA, OR. 503-975-4324



CAT 623-B: Self-loading scraper, good condition, Reduced \$29,500. Salem, OR. 503-362-3055



Cat D7F dozer, 94N series, power shift, cab, U-blade, 75% U/C, #25 cable unit, Cat #70 pull scraper, package \$24,500. Good condition. Camas, WA. 360-607-1646



2003 CAT 312C excavator, 4100 hours, manual quick change 9'6" stick, hand controlled Link Thumb, 36" bucket, 60" mud bucket, undercarriage @ approx. 75%. Like new condition, \$62,000. Winnemucca, NV. 775-625-3012

899 Heavy & Indust. Eq.

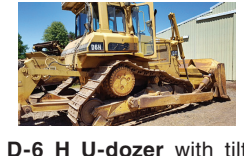
OFFICE TRAILER



Mobile OFFICE TRAILER: approx. 28', 2 a/c units, 2 rooms, insulated, low "E" glass windows, phone lines & CAT 5 lines. Very good condition, \$10,500. Winnemucca, NV. 775-625-3012



LAND CLEARING
• Ag • Farming • Nursery
• Christmas Tree Removal and Overstock Nursery Removal
• Logging • Excavation
• Road Building
Slash Piling and Burning Estacada, OR. 503-407-9058
omalleybros.com
503-407-3055
obcfirewood.com



D-6 H U-dozer with tilt and ripper, near new engine and hydraulic pump, \$79,500. Salem, OR. 503-362-3055



1960 Kenworth 10 ton boom truck 220, 18' jib, \$6,900. Falls City, OR. 503-508-6636



1998 Leroi 185 CFM air compressor. Trailer mounted. Cummins 4 cylinder Diesel. 2133 ACTUAL HOURS. Has spare tire and hose. One owner former Municipal machine that is in very good condition. Recent major service including air oil separator. Work ready, \$8900. Located in Twin Falls ID. Call 208-613-0050

2005 CAT D6R Series II XW, 6 way blade, rippers, only 2300 hours, \$115,000. The Dalles, OR. 541-490-3730

D8 Cat dozer, cable blade, winch, modern rops, nice paint, always stored inside. Runs very good, \$4500. Photos available. Toledo, WA. 360-864-2854

REPLACEMENT DECAL SETS

Construction, Forestry & Ag Equipment. Fast, Knowledgeable, Reliable Service. 215-536-5339 email: info@CustomServicesCompany.com
Thousands of sets, Old & New, in our digital inventory. **www.QuipCal.com**

CASE INDUSTRIAL PARTS

We sell genuine, after market, and used CASE parts at discount prices nationwide. Call For Free Catalog. **CENTRAL EQUIPMENT AFTER MARKET & USED PARTS** Medford, OR (888) 593-8749

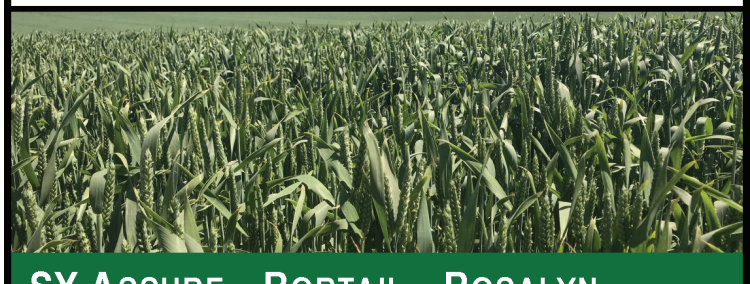
Quality Used EQUIPMENT & ATTACHMENTS

• INDUSTRIAL
• COMMERCIAL
Please visit our Website **www.amtractor.com** for a complete list of Machines and Attachments

American Tractor

Our Toll Free # **888-499-8980**
Call Cameron Noble or Eric Hunt
CENTRAL POINT, OR

CERTIFIED SEED WHEAT



SY ASSURE BOBTAIL ROSALYN YAMHILL LCS