

881 Shop Equip. & Tools



Wanted: Allen Magne-to Magnet charger and Allen Servicer. Beaver-ton, OR. 503-849-4091

Tennet Floor Scrubber: Model 15850, propane, commercial size. Tennet Floor Sweeper, Model 3640, battery powered, walk behind. Radiant Propane Heaters, Model TR100, 40' long, complete, like new. Sublimity, OR. 503-769-7127

884 Well-Drilling Equip.



Well drilling truck and tools. Second truck included, \$40,000. Crane, OR. 541-493-2479

887 Irrigation Equip.

WANTED: 500' of 2' diameter pipe. 530-339-5669

3500' of wheel line, mostly 4" and 5" Wade Rain and some 4" Pierce. 3 movers. Comes with 600' of main line. Call for more info, \$8,000. Connell, WA. 509-948-0468

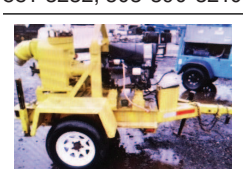


Westinghouse IRRIGATION/ HYDRANT PUMP assembly: 100hp, 480/277v, 3ph 1500 gpm, 150"Lx55"Wx45"H. Includes soft start controller/ panel. Good condition, \$7800 FOB (shipping extra). Ferndale, WA. 360-380-2907

Wanted: (2) self cleaning screens for 30HP pump intakes, must be good working condition (541)419-8370

(2) Wheel lines, Wade Rain, 1/4 mile, 5" pipe, 76" wheels, mover, \$4,300 each. (23) 6"x30" Mainline, 1/2 with risers, \$100 each. (36) 8"x30" Mainline, 1/2 with risers, \$140 each. Pasture Harrow with 12' drawbar, 9'x12', 5 sections, \$695. Terrebonne, OR. 541-548-0731

Pivots: Good, various lengths, all brands & late models. No rust. Plus buried wire. Call Keizer, OR. Cell 503-881-3232, 503-390-3210



2006 Wacker U400, 6" towable pump. Self priming. 3 cylinder, diesel. Low hours. Well maintained and like new condition. New cost \$32,000. Sell for \$8500. Located in Twin Falls Idaho. 208-613-0050

(70) Used Pivots: Engines, pumps. Garden Valley, ID. Call Mike at 208-420-1480, or see www.pivotsplus.com

(3) T-L Irrigation Machines: 1991- 7 tower T-L Pivot with 40' overhang, 11.2X24 tires, worm gears, R3000 sprinklers, \$21,250. 1993- 7 tower T-L Pivot with 50' overhang, 11.2X24 tires, worm gears, R3000 sprinklers, \$24,300. 1995- 8 tower T-L Center feed Linear machine with 540' of 6" HDPE hose, Planetary gears, 1- 30' overhang. Includes backup diesel engine skid, \$36,500. Pasco, WA. 509-619-9256

WANTED: irrigation main line, 5", 6" and 8" supply hydrants. Wade rain and/ or Ringlock. Salem or surrounding area, OR. 503-437-4833

Drip Hose: 20mm with .42 emitters spaced 48" apart, approximately 110 rolls, 1000' each, \$7500. 12 rolls New 12" spaced emitters, \$900. Dayton, OR. 503-437-4833

BEST SELLERS "...Had great results and will definitely use Capital Press again." Len St. Claire, Horseshoe Loop, Lebanon, OR Call 1-800-882-6789 to advertise.

IRRIGATION EQUIPMENT BOUGHT. SOLD. RENTAL. Design of Effluent Handling Systems - Gates, Valves & Aerators New & Used Parts. • Aluminum Pipe • Certa-lok • Siphon Tubes • HDPE • Sand Media Filters • Wheel Lines • Pumps

887 Irrigation Equip.

H Pipe & Supply. Specializing In • Drip Irrigation • Filtration • Design. 598 Baseline, Cornelius, OR (503) 357-4217 www.hpspipe.com

890 Packing/ Processing Eq.

St Regis 2R positive displacement pump with Sterling 1/2 hp variable speed motor & gear reducer, 220/440 volt, forward and reverse controls. Some parts missing, \$150. Eugene, OR. Contact Julie Crooks 541-689-0913

896 Forklifts

DAEWOO BC20S Forklift: electric, 4,000 lb. with 3 stage mast and power adjust forks, lifts to 21.5' Clark IT 40, Hyster 40 and Hyster 60 also available. Sublimity, OR. 503-769-7127



TOYOTA FG-20, 4000lb capacity, Pneumatic tires, side shift, propane, wide view 3 miter mast, \$5500. McMinnville, OR. 503-550-7625 springhollowequip.com



1994 Clark All Terrain 5000 lb. forklift with 15' reach. Pneumatic tires. Propane. 3800 Hours. Very clean, one owner, well maintained machine, \$8900. Twin Falls, ID. Call 208-613-0050



2004 HYSTER H-190HD, 183" mast, side shift, plus 2 extra valves, 8" forks, 6800 hours, very nice, make great squeeze, other lifts available, \$32,650. McMinnville, OR. Call/ Text 503-550-7625 springhollowequip.com



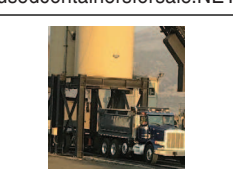
2006 Wacker U400, 6" towable pump. Self priming. 3 cylinder, diesel. Low hours. Well maintained and like new condition. New cost \$32,000. Sell for \$8500. Located in Twin Falls Idaho. 208-613-0050

Used Lift Trucks. Also New & Used Parts All sizes, makes & prices LIFT TRUCK SERVICE 888-890-1450 forkliftsales.com Ellensburg, WA 44-48-2104

899 Heavy & Indust. Eq.



20' & 40' Storage Containers: WE WILL MEET OR BEAT ANYONE'S PRICE. Wind and weather- Tight, Quality doors, floors, & hinges. Container delivery extra fee. Viking Cargo Containers Inc. CALL or TEXT: 503-388-4540 usedcontainersforsale.NET



1996 Peterbilt transfer, 18 speed, N14 Cummins, 4 axle hydraulic transfer trailer, asphalt tarps. Very good shape, ready to work, \$95,000. Redmond, OR. 541-480-0890

CAT 325C Excavator: 13,615 hours. 48" CAT bucket with matching thumb, hydraulic pin grabber and auxiliary hydraulic. New undercarriage replaced 2,000 hours ago along with new hydraulic pumps. Service records available. Nice clean machine ready for work. \$77,000. Roseburg, OR. 541-817-5846

899 Heavy & Indust. Eq.



Takeuchi TB240 Excavator: 2017, 1500 hours, Hydraulic Thumb, 2 Buckets. Asking \$37,500. Call Pepe 503-544-3232, Pat 503-407-9062



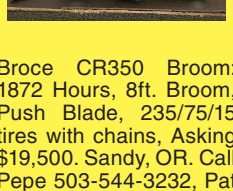
New Holland C190 Track Skidsteer, New Tracks, New GP Bucket, 3900 Hours, Asking \$24,500. Sandy, OR. Call Pepe 503-544-3232, Pat 503-407-9062



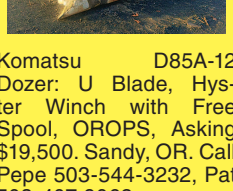
CAT 623-B: Self-loading scraper, good condition, Reduced \$33,500. Salem, OR. 503-362-3055



2015 Takeuchi TB235 Excavator: Blade, Hydraulic Thumb, Clean up Buckets. Asking \$32,500. Sandy, OR. Call Pepe 503-544-3232, Pat 503-407-9062



Broce CR350 Broom: 1872 Hours, 8ft. Broom, Push Blade, 235/75/15 tires with chains, Asking \$19,500. Sandy, OR. Call Pepe 503-544-3232, Pat 503-407-9062

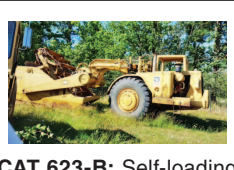


Komatsu D85A-12 Dozer: U Blade, Hyster Winch with Free Spool, OROPS, Asking \$19,500. Sandy, OR. Call Pepe 503-544-3232, Pat 503-407-9062

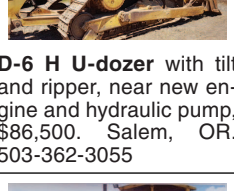
899 Heavy & Indust. Eq.



New Holland C190 Track Skidsteer, New Tracks, New GP Bucket, 3900 Hours, Asking \$24,500. Sandy, OR. Call Pepe 503-544-3232, Pat 503-407-9062



CAT 623-B: Self-loading scraper, good condition, Reduced \$33,500. Salem, OR. 503-362-3055



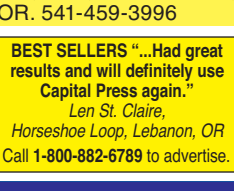
D-6 H U-dozer with tilt and ripper, near new engine and hydraulic pump, \$86,500. Salem, OR. 503-362-3055



CAT D5M LGP: 1997 angle dozer, finger tip steering, \$46,500. Salem, OR. 503-362-3055



2010 Cat 307d, 3500 hours, 2 buckets, blades, \$48,000. 2016 John Deere 85G excavator, hydraulic thumb, \$80,000. Silverton, OR. 503-932-0766



Volvo ECR88 excavator, 1160 hours, 3 buckets, thumb. Excellent condition, \$49,500. Oakland, OR. 541-459-3996

BEST SELLERS "...Had great results and will definitely use Capital Press again." Len St. Claire, Horseshoe Loop, Lebanon, OR Call 1-800-882-6789 to advertise.

899 Heavy & Indust. Eq.



Allen Engineering Super Pro 500 ride-on power trowel, Kubota 4 cylinder turbo diesel engine, 10' working width, work lights, with (8) 62.5" clip-on flat 5 blade finish discs, & (4) piece bulldog dolly system, meter reads 515 asking \$14,950. Sandy, OR. Call Pepe 503-544-3232, Pat 503-407-9062



Terex TX650: 4x4, rear box scraper, PTO, new engine, \$19,500. Sandy, OR. Call Pepe 503-544-3232, Pat 503-407-9062



1985 Hampton Engineering Inc. TL 3013 All Terrain Hydraulic 15-Ton Tower Lifter, Perkins diesel, powershift, with rotating and sliding tower deck, four telescopic tower attaching points, all-wheel steering, 4 hydraulic outriggers, enclosed operators console, (runs, drives & operates) (Reads 286 hours), \$15,500 Sandy, OR. Pepe, 503-544-3232 or Pat 503-407-9062



1993 John Deere 690-ELC: SN 538735, 9797 hours, 50' max reach, 37.25' max digging depth, no thumb. Has quick coupler, 44" bucket, 32" pads, track length 15', width 10'6", \$38,000. Paisley, OR. 541-943-3318 Leave message



Bear Cat BC2002/CRC Chip Sealer, Cummins, 6,275 hours. New Tires, Asking \$27,500. Sandy, OR. Call Pepe 503-544-3232, Pat 503-407-9062

Farm Seller.com AMERICA'S FARM AND RANCH DATABASE

899 Heavy & Indust. Eq.

REPLACEMENT DECAL SETS Construction, Forestry & Ag Equipment. Fast, Knowledgeable, Reliable Service. 215-536-5339 email: info@CustomServicesCompany.com Thousands of sets, Old & New, in our digital inventory. www.QuipCal.com



Cat D7F dozer, 94N series, power shift, cab, U-blade, 75% U/C, #25 cable unit, Cat #70 pull scraper, package \$24,500. Good condition. Camas, WA. 360-607-1646



2009 John Deere 350DLC: Quick Change, 11,000 Hours, Nice Machine, Asking \$54,500. Sandy, OR. Call Pepe 503-544-3232, Pat 503-407-9062



John Deere 310C Backhoe: 5205 hours, starts and runs good, excellent tires, \$12,000. Monmouth, OR. 541-207-4941

PLACE LINE CLASSIFIED ADS TOLL-FREE FROM ANYWHERE! 1-800-882-6789

CASE INDUSTRIAL PARTS We sell genuine, after market, and used CASE parts at discount prices nationwide. Call For Free Catalog. CENTRAL EQUIPMENT AFTER MARKET & USED PARTS Medford, OR (888) 593-8749

Quality Used EQUIPMENT & ATTACHMENTS • INDUSTRIAL • COMMERCIAL Please visit our Website www.amtractor.com for a complete list of Machines and Attachments American Tractor Our Toll Free # 888-499-8980 Call Cameron Noble or Eric Hunt CENTRAL POINT, OR

902 Farm Equip. Parts

Starters, alternators, and generators. Call 503-364-3650 or visit Walz's Rebuilt - 348 Market St. NE., Salem, OR.

Berry bed maker & shaper, tractor parts for Case 400 & John Deere 1050. Call Thomas for pricing. Forest Grove, OR. Thomas 503-502-4380

Chysolm rider bean picker parts, complete. Gervais, OR. 503-510-3566

905 Antique Farm Eq. & Parts

1960 AC-6G track loader, fire damage, not running, \$1000. Auburn, WA. 253-797-2019



Missing Something? Capital Press has what you're looking for and more! Capital Press 1-800-882-6789 CapitalPress.com

902 Farm Equip. Parts

NEW & USED OLIVER & CLETRAC Crawler Parts Our Specialty ZIMMERMAN OLIVER-CLETRAC 1450 Diamond Station Rd. • Ephrata, PA 17522 717-738-2573 Fax 717-733-3529 www.olivercletrac.com

Nyssa Tractor & Implement Our yard has 5 miles of road, the rest is Farm Machinery & Parts. www.nyssatractor.com Toll Free (833) 372-4020 Nyssa, OR

Equipment www.sseqinc.com • PASCO, WA (509) 547-1795 • QUINCY, WA (509) 787-3595 • OTHELLO, WA (509) 488-9606 • HERMISTON, OR (541) 567-3001 • LA GRANDE, OR (541) 963-8144 • ALBANY, OR (541) 757-8112

Table with columns for equipment type and price. Includes sections for BALERS - LARGE SQUARE, BALERS - SMALL SQUARE, BALERS - ROUND, SWATHERS, RAKES, and TILLAGE/AG SPRAYERS.

KICK THE TIRES Event SPECIAL OFFERS Great in-store deals and finance options on all New Holland equipment—now until March 31. NEW HOLLAND AGRICULTURE NEW HOLLAND CONSTRUCTION

ASSOCIATED TRACTOR SERVICE INC. NEW • USED • REBUILT PARTS PARTS • SERVICE • EQUIPMENT 800-735-1301 • 209-466-3003 1323 W. Charter Way, Stockton, CA 95206-1110

BIG TRACTOR PARTS, INC. ~ GEARED FOR THE FUTURE ~ STEIGER TRACTOR SPECIALIST 800-982-1769 www.bigtractorparts.com

NEW, USED, AND REMAN PARTS TOLL FREE: 1-877-928-1646 32427 OLD HWY 34, TANGENT, OR 97389 Combine Parts, Rebuild Kits, Seats w/Air Suspension \$1,025, Reman Engines for Case/IH, John Deere, and Ford, JD 4010, 4020 Clutch Kits \$715, SALVAGED TRACTORS, Farmland Tractor Supply Parts@Farmlandtractor.com