

804 Building Materials

Tennet Floor Scrubber: Model 15850, propane, commercial size. Tennet Floor Sweeper, Model 3640, battery powered, walk behind. Radiant Propane Heaters, Model TR100, 40' long, complete, like new. Sublimity, OR. 503-769-7127

Used Treated and Untreated Glulam Beams: many sizes up to 65' long. Portland, OR. 503-936-9414

REM METAL ROOFING AND SIDING AGRICULTURAL & COMMERCIAL 9109 N. Wilbur Ave., Portland, OR (503) 285-1907 www.remsteel.com

Don't Replace Your Metal Roof. Repair it!

Rust control, stops leaks. White reflective or colored top coats. 503-881-1946 360-727-3500

COUNTRY VALUES. BIG CITY RESULTS. Ag in the west news delivered in print or online.

- Newspaper
E-editions
E-newsletters
Mobile
Website

Subscribe Today. 1-800-781-3214 Capital Press 1-800-882-6789 CapitalPress.com

805 Farm Buildings

JUHR CONSTRUCTION CORP. 503-658-2306 PRE-ENGINEERED ALL STEEL BUILDINGS Agricultural, Recreational, Industrial

COMPLETE DESIGN, BUILD and ENGINEERING SERVICE Riding Arenas, Industrial, Commercial, Nursery, Cold Storage, Hay Storage

STEEL STORAGE SYSTEMS, INC. 1-800-426-0506 (503) 266-5740

Capital Press Ag Weekly • OnlyAG • Capital Press Ag Weekly • OnlyAG • Capital Press Ag Weekly • OnlyAG • Capital Press Ag Weekly • OnlyAG

805 Farm Buildings

Capital Press Ag Weekly BATTLE THE FLAMES AND THEIR CAUSE Ranchers criticize forest management, firefighting

Capital Press Ag Weekly PREDATORS DELIGHT WSU RESEARCHERS

Capital Press Ag Weekly CHRISTMAS TREE TRUCK BEDS: 8x20 with 8x8 over cab. Sublimity, OR. 503-769-7127

One year access to Capital Press \$49.99 Print delivery once a week plus 24/7/365 delivery to your device.

805 Farm Buildings

Martin Cisneros Pole Buildings & Concrete: Shops, garages, arenas, hay storage. Agriculture/Residential, additions and repairs. Serving Oregon CCB# 135771. Licensed, bonded and insured. Excellent references. 503-375-9273 or 503-507-2847

'Old School' Timber Truss Buildings. Heavy Duty for wind, snow and fire. New or restoration, reroof. 48 years. Al Fromherz Construction, Dallas, OR. 503-931-9585 CCB#44178

821 Christmas Trees Cash Paid. Top Prices. Christmas Tree Fields. Any Condition. Oregon, Washington. 503-873-6774, 503-551-5809

Greenbriar Ag Management Offering Professional Christmas Tree Services: Experienced, quality work, planting through harvesting, stump grinding. Sales, brokering, licensed & bonded contractor. Farm & Forest Labor License #10628 Stayton, OR. 503-932-2323 greenagmngt@wvi.com

STUMP GRINDING: with greater horse power, we grind wider and deeper. Sublimity, OR. 503-769-7127

Attention Christmas Tree Growers: Complete management services available. Planting, cultivation and harvesting. Also, sales available. High quality work. Licensed and bonded, backed by 50 years experience, BTN of Salem, OR. 503-881-8610

822 Nursey Stock - Plants 3 year old, nursery grown McDonald trees. Large branched trees, to be dug to order. Minimum Order 100 trees, 5000 total \$9 each. Scio, OR. 503-779-8979

LOOK! Start your orchard with larger trees. 3 years, 2 gallon Jefferson trees, while supplies last, \$6. Silverton, OR. 503-873-5940

822 Nursey Stock - Plants

#3 gal Jefferson Hazelnuts, \$11 ea. Silverton, OR. 503-580-1129

Blueberries, Duke: 3 year old plants, \$2.50 each. Albany, OR. 503-871-9114

Sacajawea Hazelnut Trees, 4 years old, \$6 to \$8. Crabtree, OR. 503-871-9114

EMERALD GREEN ARBORVITAE: rooted cuttings and 2-1/4", liners available. Forest Grove, OR. Call 503-359-7540

2 Year Old Jeffersons in root bed, #1 quality, \$4/ each. \$3/ each if you harvest and take at least 500. Baker Farms, Inc. Harrisburg, OR. 541-729-0573



Jefferson, Yamhill, Sacajawea and Wepster. Beautiful, nursery grown, large quantities. BUY 1000 Jefferson, GET 500 Jefferson FREE! Blue Heron Farm, Independence, OR. 503-838-3779

Blueberry (20 varieties), Raspberry, Marion, Boysen, Currant, Grape, Kiwi, Strawberry Plants. Canby, OR. 503-730-4788 www.canby.com/morningshade

Yamhill Bare Root Hazelnut Trees: #1's \$5/ tree. Available now. St. Paul, OR. 503-789-7439 or 503-991-6728

Flowering Red Buds, Cherries, Pears, Plums, Shrubs and Pussy Willows. Reasonable prices. Troutdale, OR. 503-665-3347

824 Seed ALFALFA SEED \$2.70/LB.

Alfalfa Seed, \$2.70/ lb., Dormancy 4. Tests well with great persistence and winter hardiness. Inoculated in 50 lb. bags. Kuna, ID. Contact Dave 208-890-1066 or Jessica 208-761-2720 or email seed@davereynoldsfarms.com

Quality VNS Alfalfa Seed: \$2.00/ lb. Kreggers, Touchet, WA. Chris 509-394-2400

824 Seed

Pasture Seed \$1.20/ lb. Lawn Seed \$1.20/ lb. Wheat Straw \$120/ ton. Grass Hay \$180/ ton. Wheat \$6/ bag. Rickreall, OR. 503-623-6922

Foundation Fawn Fescue: planting seed stock Halsey, OR. 541-974-4502, 541-974-5654

825 Fertilizer

POTENTGROW Organic Fertilizer Chicken Manure and/or Litter

For sale by the truckload, delivered anywhere in OR./WA. PotentGrow 5-2-2 organic fertilizer pellets. Product of Washington State. WSDA approved for organic use. For pricing and freight quotes call/ text 541-602-9477 or e-mail: info@potentgrow.com

900 ton 2nd cutting Alfalfa, big bales, no rain \$225/ton + freight. Silver Lake, OR. 541-419-0327

CERTIFIED ORGANIC CALVES, weaned. Othello, WA. Call for details 509-989-2141, 509-592-3499

ORGANIC ALFALFA, FIRST, SEC AND THIRD, 275 TONS \$200. MERRILL, OR. 541-891-9866

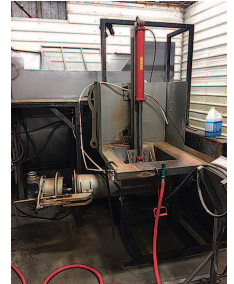
Various round bale silage, organic and conventional, \$35-\$45/ bale. Possible delivery. Scio, OR. 503-930-2738

1450 Bales of Organic Haylage: good quality, \$55/ bale. Scio, OR. 541-990-0272

828 Misc for Sale

55 GALLON DRUM SALE: Plastic drums \$8.50 each, 3 for \$7.50, 6 for \$7, 9 for \$6.50, 12 for \$6, 24 for \$5, 30 or more for \$4. Great for water storage. Loading time: Monday-Thursday 9:30-4:30, Friday 9:30-3:00 only. GloryBee Factory Store, 29548 B Airport Rd, Eugene, OR. 541-689-0913

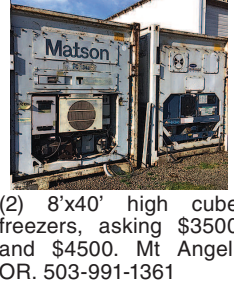
828 Misc for Sale



11" Auto grinder, 50 hp 3 phase motor, with pump into 10,000 lb stainless steel double wall mixer with 3 phase motors and pump. Make offer. Mt. Angel, OR. 503-991-1361

863 Refrigeration Equipment

Walk-In Coolers and Freezers: temp and humidity controls. Design and installation. 503-475-7046, carbontech@frontier.com, www.carbontechnologyinc.com



(2) 8'x40' high cube freezers, asking \$3500 and \$4500. Mt Angel, OR. 503-991-1361

869 Livestock Equip. & Supplies

Feed Mixers: RotoMix IV 184-10, Farmhand G40, pictures available, \$3500 each. Kimberly, OR. 541-934-2148, office@rudicreekranch.com

Livestock Panels: 16' (6) rail, (3) brace, \$128 each. 12' panels, (6) rail, (2) brace, \$96. Bow gates, all lengths and sizes. These panels are new Green color, hundreds available. Heavy 16' Feeder Panels, \$330 each. La Grande, OR. 541-805-9279, 541-963-6258

Peerless 500 roller mill, 2 ton capacity, extra rolls, \$7500. Goldendale, WA. 509-250-0538



Fodder Feed System: three systems with 24 trays per system. Included PVC pipe, valves, timers, lights, fans, and hoses, \$5,000. Bainbridge Island, WA. 206-799-1460



2005 Elite 6-horse, from three 8x10 to six 4x10 stalls. Dividers store inside trailer. 84" interior height, fully insulated, air ride, water buckets don't spill a drop. Rear and side ramps, access doors and roof vents for all stalls. Exterior LED lighting, new tires. Electric over hydraulic brakes, \$28,500. Stayton, OR. 503-559-5966

*Monster big bale feeders for single or double bales •Heavy duty gates •Continuous fence panels •Oil field pipe •Posts cut to order up to 7-5/8 od jonspipeandsupply.com, Orland, CA. 530-949-2285

Looking for a farm or ranch? VISIT FarmSeller.com

Are you tired of: Uncovering and recovering stacks to load trucks? Bales lost due to leaking covers?

Superior Building Manufacturing Inc. can help ease your mind by: Providing a quick payback of 5 to 7 years compared to tarping... Superior Building Manufacturing Inc. offers Engineered buildings in many different sizes. Engineered sizes available are: 41', 51', 63', 72', 80' wide buildings by length of your choice.

KAISER STEEL BUILDINGS, LLC Factory Direct Metal Building Kits Since 1963 • F.O.B. our plant, Eugene, OR KAISER STEEL BUILDINGS, LLC For information call or write (541) 688-0141 30025 Kaiser Ave., Eugene, OR 97402 WWW.KSBUILDINGSLLC.COM



Bare Root Hazelnut Trees: We have up to (20,000) bare root Yamhill hazelnut trees that will be ready for 2018- 2019 planting. Along with: Doris, York, McDonald, Sacajawea and Webster for pollinizers. Shery Farms, Albany, OR. 541-979-7739

Buying or Selling Capital Press is here to help you! 1-800-882-6789 or FAX 503-370-4383 CapitalPress.com

Blueberry Plants OREGON BLUEBERRY FARMS AND NURSERY Northern Highbush Southern Highbush Rabbiteye Call or visit us online today. (503) 873-1200 www.oreblueberry.com

822 Nursey Stock - Plants

Blue Ribbon The Early Season Just Got More Flavorful. FALL CREEK FARM & NURSERY, INC. 1.800.538.3001 | www.fallcreeknursery.com

824 Seed

CROSSWORD: STATE ANON STUN IOWAN CODE LINE BRAKESHOOES EMIT EYE TEN TWEETS TOAD ELAPSE AFFECT IDIDIT CARAT WREN NAME TIE WRONG BIB SLIP EONS VILLA GRUNTS NICELY CHASTE COPE PATTED FLU FRO ACCT OCEAN FLOOR ITAL WEEP ROMPS DIRE NODS YEAST

822 Nursey Stock - Plants

869 Livestock Equip. & Supplies

869 Livestock Equip. & Supplies

869 Livestock Equip. & Supplies

METAL BUILDINGS! 50 Years of Manufacturing Excellence. Buy Factory Direct! Equipment Storage, Hay Shed, Dairy Shade, Arena, Barn, Roofing, Siding & Trim R & M Steel Co. 866-454-1800 • 208-454-1800 www.rmsteel.com sales.rmsteel@gmail.com

Specializing in Truck and Livestock Scales Established in 1959, Scales NW offers a wide range of equipment, from precision lab balances to high capacity rail scales, as well as certified scale service and installation. Scales NW is proud to serve: California, Idaho, Montana, Nevada, Oregon, Utah, Washington Contact Steve Orr for more information today! Email: steveorr@scalesnw.com Phone: (503) 510-3540 www.scalesnw.com • (800) 451-0187