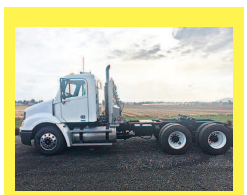


210 Trucks



2006 Freightliner Columbia: CAT C13, 13 speed, wet kit, 12K front and 40K rears, 4 spring suspension, double lockers, 200" wheelbase, 134K miles, excellent shape, low mileage, \$49,500 Gresham, OR. 503-719-2545

CAPITAL PRESS CLASSIFIEDS GET RESULTS!

Don't look any further! Sell or buy what you need in Capital Press!

1-800-882-6789
FAX (503) 370-4383

AD DEADLINES:
Classified Display Ads,
Wed. @ 10AM

Classified Line Ads,
Wed. @ Noon

CapitalPress.com

210 Trucks

USED BUSES FOR SALE

WESTERN BUS SALES, INC.
www.westernbus.com • (800) 258-2473
30355 S.E. Hwy 212, Boring, OR 97009
Expansive Inventory • Low Prices • Service • Parts



2010 1500 4x4 Chev Extra-cab. 5.3L V-8 & A/T... \$10,900



2004 Ford F-350 4x4 Utility. Extra-cab. 6.8L V-10 & A/T.....\$6,900



1999 Ford E-350 15-Passenger Van. 5.4L V-8 & A/T.....\$4,900



2008 F-250 4x4 Crew-Cab. 82" Bed, 6.4L Diesel & A/T..... \$12,900



Herd of Grumman 9' Workhorse Step Vans, 85k miles 4.3L V-6 & A/T..... \$6,900 Ea.



2004 M-2 Freightliner 24' Box Truck. 3,000# Liftgate, C-7 Cat & 6-Spd.....\$15,900

ChambersMotorCo.com
(503) 663-7200 • Boring, OR

210 Trucks

POWER FLEET & COMMERCIAL SALES

Jim Church
FLEET MANAGER
Phone: 503-769-7100
Cell: 503-910-7784
jim@powerautogroup.com

Phil Fitzner
FLEET MANAGER
Phone: 503-769-7100
Cell: 503-551-4491
pfitzner@powerautogroup.com

POWER FLEET - COMMERCIAL
WWW.POWERAUTOGROUP.COM

LOVELL Truck Sales 50th ANNIVERSARY

2000 Freightliner 3-Axle Day Cab, Series 60 Detroit 10 speed.....\$14,500

(2) 2004 Peterbilt 3-Axle Day Cab, Cummins, 10 speed, 3.90 gears, PS, AC, cruise control. Air fairings can be easily removed.....\$12,500

2005 Princeton PB50 Forklift, CAT diesel, AWD, lift, tilt, side shift, 5,000 lb. capacity.....\$24,500

1982 International Flatbed Truck, DT-466 210 hp, 5x2, spring suspension...\$5,500

2005 Kenworth W900L, Cummins ISX, 470hp, 13 speed, engine brake, 60" sleeper, 244" WB, PS, AC, cruise control.....\$29,500

2004 Freightliner 3-Axle Day Cab, Series 60 14L 435 hp, fuller 10 speed, PS, AC, cruise control, engine brake 171" WB.....\$16,500

(2) 2012 Volvo VNL Single Axle, Volvo I-shift a/t transmission D13 405 hp, PS, air ride suspension and cab, power windows and locks. Low miles,.....Starting at \$29,500

2000 Freightliner Century 4-Axle Day Cab, Series 60 Detroit 12.7.....\$18,500

2012 Freightliner Cascadia 3-axle day cab, Detroit, 10 spd.....

2007 International 3-Axle Day Cab, Cummins ISM-370 hp, Fuller 10 speed, air ride suspension, 167" WB.. \$14,500

1989 Kenworth T-600 4-axle Day Cab. Big Cam 4, 13 speed. Nice truck.....\$14,500

2002 Mack RD688S, 3-axle, 18,000lb front axle, E7-350 9 speed, cambeak suspension, 281"WB, 27' flatbed.....\$24,500

2009 Hino 20' Reefer Box, Diesel engine, auto transmission, PS, AC, cruise control, lift gate.....\$16,500

1-800-451-0012
(503) 266-5886
FAX (503) 266-6903
LOVELLTRUCK SALES.COM
680 SW 1st Ave
(Hwy 99 E) Canby, OR

210 Trucks

1990 IHC 4700 Crew Cab Truck. 12 ft. removable stake side bed with 200 lb. liftgate. DT IHC Diesel 5.8. Like new rubber. 115K. ACT. miles. one owner., Immaculate. Located in Twin Falls Id. \$8900. Call 308-613-0050

210 Trucks

2000 W900 Kenworth, 4 axles, 3406e, 18 speed, new paint, \$48,000. Silverton, OR. 503-932-0766

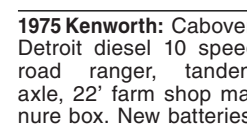
1981 International truck, tandem axle, 24' bed, Harsh hoist, 2 sets racks, roller tarp, \$29,500. Silverton, OR. 503-999-7493

1975 Kenworth: Cabover, Detroit diesel 10 speed road ranger, tandem axle, 22' farm shop manure box. New batteries. Runs and works excellent, \$16,000 OBO. Call David: 509-750-7598

1988 Ford Super Duty roll back tow truck, lights, Holmes bed, wheel lift, \$9995. Ready to work! Sandy, OR. 503-257-9615



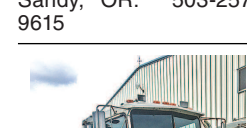
2004 Ford F450 with 12' flatbed with nice toolboxes on both sides and a 20' overhead pipe rack. Powerstroke Diesel. AT, AC, PS, CC. Brand new radials. This one owner truck is in excellent condition and has good fleet maintenance. Work ready. \$7900. Located in Twin Falls Id. Call 208-613-0050



1988 Ford Super Duty roll back tow truck, lights, Holmes bed, wheel lift, \$9995. Ready to work! Sandy, OR. 503-257-9615



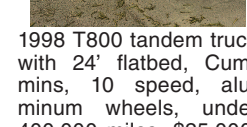
Kenworth Water Truck: 3500 gallon, new Gorman pump, new rubber, Ex municipality, low miles, \$9500. Estacada, OR. 503-407-3055, 503-407-9058



1998 T800 tandem truck with 24' flatbed, Cummins, 10 speed, aluminum wheels, under 400,000 miles, \$25,000. Silverton, OR. 503-932-0766



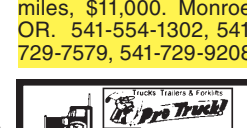
1993 MACK Dump Truck, 4 axle, 16' box, E7-350 Engine 13- Speed, runs great, \$28,500. Tualatin, OR. Call or Text 503-260-0303



1993 International, 6 speed, wet kit, 400,083 miles, \$11,000. **1990 International,** 5 and 2 speed, wet kit, 200,024 miles, \$11,000. Monroe, OR. 541-554-1302, 541-729-7579, 541-729-9218



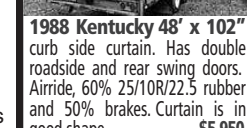
1997 Chevy C7500 SA dump truck: 6-8 yard, CAT 3116 engine 6 speed, 33,000 GVW, \$17,000. Tualatin, OR. 503-260-0303



1988 Kentucky 48' x 102' curb side curtain. Has double roadside and rear swing doors. Airride, 60% 2510R/22.5 rubber and 50% brakes. Curtain is in good shape.....\$5,950 We have many '53', '48', '45', '34' and '28' Vans in Stock. Prices from \$999-\$3,950!



2008 Bluebird Visions Bus. 48 passenger 25,000 ACTUAL MILES. Car Acert C7 Diesel. Allison AT. Full AC. Factory white. Very nice former Gov't owned bus. \$17,000. Located in Twin Falls ID. 208-613-0050



2001 Peterbilt 379, 280 WB, Cat, 18 speed, new steer tires, 80% drive tires, approx 700,000 miles since overhaul, \$55,000. Ellensburg, WA. 509-964-2218

We Are The Best Darn Diesel Shop In Oregon!

COME IN AND SEE WHY!
And We Absolutely, Positively Have The Best Remanufactured Engines Available Anywhere!
Huge Inventory • Expert Technical Assistance

ENGINES INSTALLED PRICING

Incidentals Extra

GM 6.2 - 6.5T, installed.....	\$6,350
6.6 Duramax, installed.....	\$9,250
Ford 6.0 Powerstroke engine, installed.....	\$9,200
Ford 6.4 Powerstroke, installed.....	\$10,450
Ford '94-'03 7.3 Powerstroke engine, installed.....	\$7,200
Cummins '88-'02 5.9 engine, installed.....	\$6,995
Cummins '03 & up, 5.9 C/R engine, installed.....	\$8,950
Cummins 6.7, installed.....	\$9,750

HI TECK DIESEL L/B ENGINES

DODGE CUMMINS	FORD
3.9-4BT.....	\$2,995
5.9 12V.....	\$3,095
5.9 24V C/R.....	\$3,295
'03 & up.....	\$3,495
6.7 P/S.....	\$6,395
6.7 C/R.....	\$4,095
6.2/6.5T.....	\$3,395
6.6 Duramax.....	\$4,595

Best Shipping Prices Anywhere!
ENGINE KIT SPECIALS AS LOW AS:

3.9-4BT.....	\$679
5.9 12 Valve.....	\$799
5.9 24 Valve up to '03.....	\$899
5.9 24 Valve C/R '03 & up.....	\$980
6.7 C/R '07 & up.....	\$995
FORD	
7.3 IDL.....	\$985
7.3 P/S.....	\$989
6.0 P/S.....	\$1,195

ARP- Ford 6.0 P/S Head Stud's \$395.00
All Diesel Engine Kits Have 100,000 mile Warranty on Parts & Labor.

IN BUSINESS SINCE 1975.
OVER 250 ENGINES & 450 CYLINDER HEADS IN STOCK!

R & G MACHINING AND ENGINE PARTS
COMPLETE DIESEL MACHINE SHOP AND TRUCK REPAIR
MULINO, OREGON • SHOP: 503-829-6038

NEWBERG Ford COMMERCIAL SALES

THE WORK TRUCK CAPITAL OF THE NORTHWEST

Call 503-312-4006

2019 F-250 8 ft Long Bed

6.2L V-8, 6-Spd Auto Tow/Haul Trans, XL Package, 3.73 Axle, ABS, Air Conditioning, Trailer Brake Controller, Towing Package

MSRP \$35,905
- Our Discount \$1,186
- Rebate \$1,250
#C80787 Your Price: \$33,469
- Ford Credit Bonus Cash! \$500
Your Price after additional incentives: \$32,969

2018 F-450 Flatbed w/Rack-Hitch

6.8L EFI V10, 16,000 GVW 6-Spd Auto Tow/Haul Trans, 4.88 Axle, AC, ABS, SYNC Bluetooth Cruise Control, Trailer Brake Controller, Towing Package

MSRP \$55,990
- Our Discount \$1,721
- Rebate \$2,750
- Uplift Rebate \$1,000
#C95939 Your Price: \$50,469
- Ford Credit Bonus Cash! \$500
Your Price after additional incentives: \$49,969

2018 F-350 12 ft Flatbed w/Rack

6.2L V-8, ABS, 6-Spd Auto Tow/Haul Trans, 3.73 Axle, AC, 40 Gallon Fuel Tank, Ratchet Straps, Trailer Brake Controller, Towing Package

MSRP \$60,830
- Our Discount \$2,811
- Rebate \$2,750
- Uplift Rebate \$1,000
#C59246 Your Price: \$42,469
- Ford Credit Bonus Cash! \$500
Your Price after additional incentives: \$41,969

2019 F-250 4x4 Crew Cab 8 ft Bed

6.2L V-8, Alum. Wheels, 6-Spd Auto Tow/Haul Trans, 3.73 Limited Slip Axle, SYNC Bluetooth Power Group, AC Tailgate Step, STX Pkg, Tow Pkg, w/brake Controller

MSRP \$47,815
- Our Discount \$1,896
- Rebate \$2,250
#D12933 Your Price: \$43,469
- Ford Credit Bonus Cash! \$500
Your Price after additional incentives: \$42,969

2019 F-150 Work Truck 8 ft Bed

6.3L V-6, 6-Spd Auto Tow/Haul Trans, 40/20 Vinyl Seat, 4.55 Axle, Air Conditioning, Vinyl Floors, Class IV Trailer Hitch

MSRP \$31,035
- Our Discount \$2,310
- Rebate \$760
#C36968 Your Price: \$27,969

2018 Transit 14 ft Box Van

3.7L TiVCT V-6, AC 6-Spd Auto Tow/Haul Trans, Power Equipment Group, SYNC Bluetooth Cruise Control, 12 Aluminum Ramp, Tow Package, Cruise Brake Controller

MSRP \$49,530
- Our Discount \$3,061
- Rebate \$3,500
- Uplift Rebate \$1,000
#B08817 Your Price: \$41,969

2019 F-150 SuperCrew 4x4 6-1/2 ft Bed

5.0L V-8, 6-Spd Auto Tow/Haul Trans, Running Boards, SYNC Bluetooth Power Group, AC Fog Lights, Hitch, 36 Gallon Fuel Tank

MSRP \$45,835
- Our Discount \$2,116
- Rebate \$750
#A18867 Your Price: \$42,969

2019 F-350 4x4 Diesel 12 ft Contractor

6.7L Diesel, AC, 6-Spd Auto Tow/Haul Trans, Power Equipment Group, SYNC Bluetooth Cruise, 3.73 Axle, Trailer Brake Controller, Tow Package

MSRP \$69,345
- Our Discount \$6,626
- Rebate \$1,250
- Uplift Rebate \$1,000
#A03283 Your Price: \$60,469
- Ford Credit Bonus Cash! \$500
Your Price after additional incentives: \$59,969

2018 Transit T250 Medium Roof

3.7L TiVCT V-6, AC 6-Spd Auto Tow/Haul Trans, Power Equipment Group, Keyless Entry, SYNC Bluetooth Air Conditioning, Cruise Control

MSRP \$38,825
- Our Discount \$2,356
- Rebate \$3,500
#B29511 Your Price: \$32,969

2019 F-150 4x4 8 ft Bed

3.3L PFDI V-6, Alum. Wheels, 6-Spd Auto Tow/Haul Trans, SYNC Bluetooth Power Group, AC Cruise Control, Towing Package, Chrome Package

MSRP \$37,260
- Our Discount \$1,541
- Rebate \$750
#C51962 Your Price: \$34,969

2018 F-350 12 ft Landscaper

6.2 V-8 EFI, ABS, 6-Spd Auto Tow/Haul Trans, SYNC Bluetooth Power Group, AC Cruise Control, Air Conditioning, Trailer Brake Controller, Tow Package

MSRP \$58,969
- Our Discount \$1,750
- Rebate \$2,750
- Uplift Rebate \$1,000
#C55945 Your Price: \$53,469
- Ford Credit Bonus Cash! \$500
Your Price after additional incentives: \$52,969

2019 F-250 4x4 SuperCab 8 ft Bed

6.2L V-8, 3.73 Axle, 6-Spd Auto Tow/Haul Trans, Trailer Brake Controller, SYNC Bluetooth Power Group, AC Cruise Control, Towing Package

MSRP \$43,605
- Our Discount \$1,886
- Rebate \$1,250
#D5323 Your Price: \$40,469
- Ford Credit Bonus Cash! \$500
Your Price after additional incentives: \$39,969

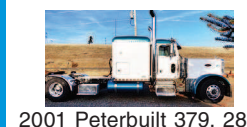
visit **newbergfordfleet.com**
503-312-4006

Offers expire 7 days after publication and subject to prior sale and incentive changes. *Uplift rebates for businesses only with your \$1200 or more uplt. **Must finance with Ford Credit. ***Trade-In Assistance Rebate requires trade-in of 1995 or newer vehicle or lease terminated 30 days prior to or 90 days after delivery. ****Requires proof of business ownership. Sale prices do not include license & title and \$50 documentation fee. Pictures and actual units may vary. Sale prices do not apply to A, X, Z and D plans.
3900 Portland Rd. (99W)

DALE E. SYKES
Commercial Sales Manager

Available 24/7 at 503-312-4006
dale@newbergford.com

NEWBERG Ford COMMERCIAL SALES



2001 Peterbilt 379, 280 WB, Cat, 18 speed, new steer tires, 80% drive tires, approx 700,000 miles since overhaul, \$55,000. Ellensburg, WA. 509-964-2218



Military Vehicles, Halftrucks, Tanks & Dodge Power Wagons

WE PAY CASH! & pick up at your location
707-486-2882
rattlecanjohnny@gmail.com



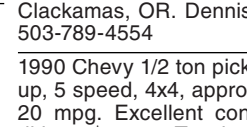
2003 Sterling, Cat 300HP engine, 7-speed transmission, snow plow, electric tarp, air tail gate, plumbed for sander, \$34,500. Portland, OR. 503-282-7211



2007 Dodge SLT: Regular cab, Cummins 6- speed, 4x4, exhaust brakes, 1 owner, \$15,500! Licensed to Dec. 2020. Clackamas, OR. Dennis, 503-789-4554



1990 Chevy 1/2 ton pickup, 5 speed, 4x4, approx 20 mpg. Excellent condition, \$3000. Touchet, WA. 509-730-1119



#1 Pickups: Used Power Stroke & Dodge Diesel 4x4. Call about great tax advantages! Wallowa, OR. 541-569-2352

The West's BEST Ag News!

- newspaper
- e-paper
- facebook
- twitter
- web

CapitalPress.com

216 Vans

PROP ANTON SAGE
REPS SERIF USED
OCEANSWELL BING
WAR OASES PASTY
PARTI OAR
BUILDINGSUPER
BUST URALS ERA
TUFT SEEME PAIN
ELF OPINE HARE
ABANDONEDWELL
YET ARMOR
BAWLS ASTRO NUT
ECHO UNPAID FINE
AMEN SNAKE ROTE
NETS SANER ANON

216 Vans

4x4 Japanese Mini Trucks:
Honda, Suzuki & others. Truck capability, quad maneuverability. Dump available. Starting @ \$3995. Portland, OR. 503-805-2684 oregondieselmports.com