

917 Orchard/Vineyard Equip.



2015 Flory Sweeper: 57 Series, 7ft head, brand new, 10 hours. Asking \$47,500. Salem, OR. 503-378-9179



400 gallon turbo-mist air blast. Very clean, field ready, \$13,500. Silver-ton, OR. 503-932-0766



Jessee Machine Works: **NUT HARVESTING EQUIPMENT**
530-342-4379
JesseeMachineWorks.com

Buying or Selling
Capital Press is here to help you!
1-800-882-6789 or FAX 503-370-4383
CapitalPress.com

Get all your agricultural and natural resources news in one place.

INSTANT EXCLUSIVE UNLIMITED

- NEWSPAPER
- E-PAPER
- MOBILE
- WEB
- EMAIL UPDATES

Capital Press
Subscribe today.
800-781-3214
CapitalPress.com

917 Orchard/Vineyard Equip.

2010 Weiss McNair 9800P Hazelnut Harvester with Cart: Herbst Hi/Lo rear dump cart. Harvester equipped with rear steering wheels. Cart with Herbst Des-tick, can dump straight into truck. Excellent condition, \$52,500 for the pair. Silver-ton, OR. 503-873-4806, 503-510-6239

2008 SHM all wheel drive, air cab sweeper. 7' head, plus tree row berm brush. 80HP, 4.5L John Deere engine. Excellent Condition, \$37,500. Silver-ton, OR. 503-873-4806, 503-510-6239

REFURBISHED HOP POLES— 16"x5"+ diameter base end, treated 3-4". Small amount split cedar mixed in. Bundle of 30, \$10/ post. Multiple bundles, \$8/ post. Negotiable for larger quantities. Call 509-882-2292 and leave message. Grandview, WA. 509-882-2292

IF YOU HAVE A BEEF— sell it in next week's Capital Press!

RCO Bait
Gophers • Squirrels
Voies • Moles
Dealer Locator
1-800-214-2248
Harrisburg, OR \$160768

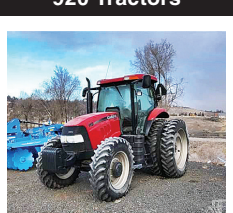
Looking for ORCHARD/VINEYARD PROPERTY?
Go to Class. 570
Capital Press
CapitalPress.com
\$159454-1

TALLMAN LADDERS
Crafted for Safety, Longevity, Stability and Affordability!



Quality made in the U.S.A. since 1954
tallmanladders.com
541-386-2733
800-354-2733
\$162973-1

920 Tractors



2009 CASE Puma 115: 1900 hours, very good condition, creeper transmission, duals, 80% rubber, A/C, \$55,000. Prineville, OR. 541-233-3771



1938 John Deere Model "D." Runs Good. In original condition, \$6650. Nampa, ID. 208-870-5787



John Deere 8285R, MFWD, large flotation tires, IVT transmission, \$139,000. Sublimity, OR. Call or text 503-932-9934



Case IH Steiger 450 tractor, 3509 hours, deluxe cab, 4 remotes, 2000 lb front end weights, 8 710-70R38 tires with 75% tread, \$149,000. Salem, OR. 503-580-4261

1994 John Deere 4560, MFD, excellent condition, new engine, \$54,500. Rickreall, OR. 503-930-1904

920 Tractors

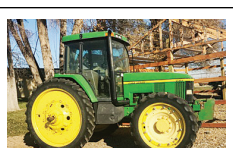
920 Tractors

Branson TRACTORS
7845 R Tractor Old Stock
Reduced Price CALL FOR \$\$
24 - 80 hp., 4WD, Compact Syncro-Shuttle, Hydro 24, 28, 35, 47 hp
THE TRACTOR STORE
(541) 342-5464
5450 W. 11th, EUGENE, OR
\$114384-1

920 Tractors

Attention: Wanted Kubota or John Deere, 4x4 compact tractor with loader/equipment. Carlton, OR. 503-550-0094

John Deere 7800: runs excellent, 8700 hours, \$30,000. Jefferson, OR. 541-327-1645



John Deere 7410, 4068 hours, power quad with left hand reverser, \$35,000 OBO. Eastern Oregon 541-823-2769



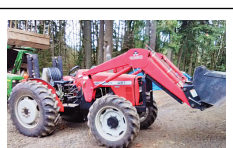
John Deere 9530T, 36" racks, 4084 hours, 3 point and swinging drawbar, 4 remotes, radar, autotrack ready, \$145,000 OBO. Sublimity, OR. 503-932-9934



1997 John Deere 8400, wide tires and newer motor, \$36,000. Albany, OR. 503-510-7779



2002 Kubota 9000 Mudder tractor with cab, 2900 hours, 4 speed, H-L and Creep gear, dual auxiliary hyd, \$26,900. Newberg, OR. Dennis 503-537-4297



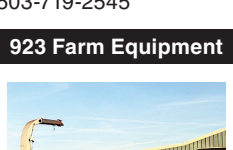
Massey Ferguson 451, 4WD, 52hp, bale spears for round and large square bales, 2 remotes, only 850 actual hours, 1050 large bucket, \$19,500. Eagle Creek, OR. 503-637-6619



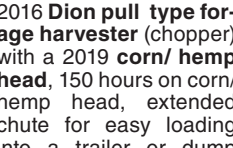
John Deere 4440, 9649 hours, \$16,000. Cottonwood, CA. Call 530-941-5077 or 530-377-4273. amen4hay@yahoo.com

WANTED
WANTED: Several John Deere Hi-Crop Tractors. Tractor Models: 7210, 7410, 7420, 7330 with creeper transmission. 503-719-2545

923 Farm Equipment



2016 Dion pull type forage harvester (chopper) with a 2019 corn/ hemp head, 150 hours on corn/ hemp head, extended chute for easy loading into a trailer or dump cart, \$65,000. Salem, OR. 503-580-4261



John Deere Air Drill 1860/1900, 30" width, 10" spacing, 270 bushel air cart. Stainless meter housing, all run blockage monitor. Openers, closing wheels and seed boots all in good shape. Mud Smith gauge wheels. Vicon spreader mounted on drill, \$55,000. Harrisburg, OR. 541-954-5862



2014 RoGator RG 1300 with new leader G4 bed, 3220 hrs.....\$112,000

923 Farm Equipment

923 Farm Equipment

923 Farm Equipment

GREYN FERTILIZER SUPPLY



John Deere/ Frontier 10' disk, 2018, scrapers and furrow fillers, rear hitch, \$5950 OBO. Warren, OR. 503-952-6433



Case 921E Loader, Cummins diesel. 5430 hours. Incredible loader big bucket. Like new tires.....\$99,000



2010 International 7400, 310 Diesel engine, Allison auto, New Leader L4000 G4, 3,066 hrs.....\$88,000



2014 Case IH Titan 4530 3 Bin, 1863 hrs, 70 ft.....\$148,000
2014 Case IH Titan 4530, 3 Bin, 4353 hours\$99,000



2005 Peterbilt 379, Cummins diesel, 13 spd, 665K miles.....\$43,500



2011 Case IH 3520 3 Bin, 3128 hours, Viper Pro Trimble 750, Very nice truck.....\$115,000



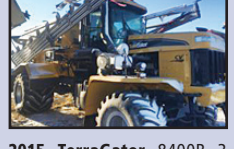
2010 Caterpillar 904H Articulating Loader, diesel engine, 2 speed, ROPS, 72" bucket.....\$29,500



2011 Merritt Self-contained Belt Trailer\$41,500
2009 Merritt, Semi Tender, hydr., belt, electric tarp.....\$39,000



2014 RoGator RG 1300 with new leader G4 bed, 3220 hrs.....\$112,000



2012 RoGator RG 1300, 1300 gallon, 120' boom, Viper Pro, 2200 hours. FREE DELIVERY\$122,000



2015 TerraGator 8400B 3 bin, 2,855 hours.....\$139,000
2016 TerraGator 8400B 990 Hrs AIRMAX Precision 2, 70' Boom\$177,000

Greyn Fertilizer Crop Specialist
For a complete selection, visit us at www.fertilizer-equipment.net
406-466-5356
Choteau, MT
\$163641-1

BEST SELLERS . . .
"...The phone rang off the hook."
Vanvelhuizen Dairy • Turner, OR
Call and list your BEST SELLER!
1-800-882-6789

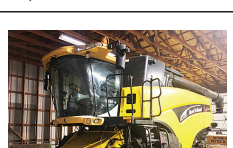
923 Farm Equipment



John Deere/ Frontier 10' disk, 2018, scrapers and furrow fillers, rear hitch, \$5950 OBO. Warren, OR. 503-952-6433



400 gallon turbo-mist air blast. Very clean, field ready, \$13,500. Silver-ton, OR. 503-932-0766



2003 CX 840 New Holland combine, with pick-up header, radish popper, 2900 separating hours, \$60,000. Albany, OR. 503-510-7779

BEST SELLERS . . .
"...The phone rang off the hook."
Vanvelhuizen Dairy • Turner, OR
Call and list your BEST SELLER!
1-800-882-6789

Western STORAGE TRAILERS
1-800-OK-2-RENT
Rent or Sale
Containers and Trailers
1-800-652-7368
CONTAINERS: 20' & 40'
TRAILERS: 27', 40', 45' & 48'
Western Mobile Storage
1-800-652-7368 • 541-342-1835
Eugene, OR \$163433-1

Containers For Sale
20' and 40'
REFRIGERATED CONTAINERS AVAILABLE
Portland Container
9449 N. Burgard Way, Portland OR
Call Alan Conner (503) 286-1767 or 1-800-788-5159
boxsales@pdxcontainer.com
(Credit Cards Accepted) \$135082-1

LANDOLL • WIL-RICH • SUMMERS
NEW & USED EQUIPMENT
Doerfler Tractor SALES COMPANY
12333 Silver Falls Highway SE Phone: (503) 769-2205
Aumsville, OR 97325 Fax: (503) 769-9450
\$163375-1

DON'T BE FOOLED BY KNOCK-OFFS!
The original Robbco Feeder was built and designed with the farmer in mind.
SEE THEM AT: **ROBBINS FARM EQUIPMENT**

- AVAILABLE IN A VARIETY OF OPTIONS:
- Rear Feed**
 - Feeds to the rear
 - Feeds 3x3, 3x4 and 4x4 bales
 - 1 wide, 1, 2, or 3 long
 - 2 wide, 2 or 3 long
 - 3 wide, 2 or 3 long
 - Side Feed**
 - Feeds to the side
 - Feeds 3x3, 3x4, and 4x4 bales
 - 2 bale feeder option
 - Truck Mounts** (owner-provided vehicle)
 - Army Trucks
 - Flatbeds



Durable • Cost-effective • Low Maintenance • Quick and Effortless Operation • Built to Order
Contact Robbins Farm Equipment for more information: (541) 523-6377
3850 10th Street, Baker City, OR 97814 • Visit us online at www.robbinsfarmeq.com
\$164018-1