

210 Trucks



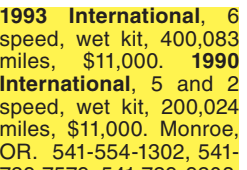
2004 Dodge Ram 3500 diesel crew cab flat bed PU 4x4 with manual transmission, stainless boxes, goose neck and bumper pull hitches, and 100 gallon diesel tank behind cab. \$18,000. Days Creek, OR. 541-525-6012

210 Trucks



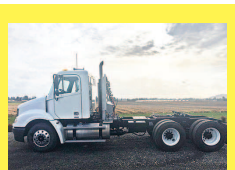
4x4 Japanese Mini Trucks: Honda, Suzuki and others. Truck capability, quad maneuverability. **Dump available.** Starting at \$3995. Portland, OR. 503-805-2684 oregondieselimports.com

210 Trucks



1993 International, 6 speed, wet kit, 400,083 miles, \$11,000. 1990 International, 5 and 2 speed, wet kit, 200,024 miles, \$11,000. Monroe, OR. 541-554-1302, 541-729-7579, 541-729-9208

210 Trucks



2006 Freightliner Columbia: CAT C13, 13 speed, wet kit, 12K front and 40K rears, 4 spring suspension, double lockers, 200" wheelbase, 134K miles, excellent shape, low mileage, \$49,500 Gresham, OR. 503-719-2545

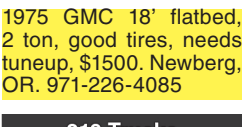
210 Trucks



1990 IHC 4700 Crew Cab Truck. 12 ft. removable stake side bed with 200 lb. liftgate. DT IHC Diesel. 5&2. Like new rubber. 115K. ACT. miles. one owner. Immaculate. Located in Twin Falls Id. \$8900. Call 308-613-0050

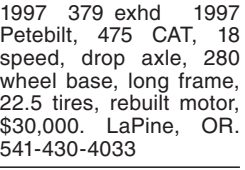
HOT! SAVINGS at Capital Press
1-800-882-6789
CapitalPress.com

210 Trucks



1975 GMC 18' flatbed 2 ton, good tires, needs tuneup, \$1500. Newberg, OR. 971-226-4085

210 Trucks



1997 379 exhd 1997 Petebilt, 475 CAT, 18 speed, drop axle, 280 wheel base, long frame, 22.5 tires, rebuilt motor, \$30,000. LaPlante, OR. 541-430-4033

CLASS 8 TRUCKS
509-534-9088



1997 Freightliner FLD120 Detroit 12.7 S60, 10spd., 3.90 ratio, 179" WB, 2 line wet kit, Engine overhaul history **CALL FOR PRICES**



2004 Freightliner Detroit S60 Recent OH, 475 hp, 15 spd., super 40s, 4.11 ratio Locker in rear diff, Drop Axle **\$39,900**



Spray Tender, 1989 Freightliner FLC, 3000 gal stainless tank, Catwalk, Bed/hoist, Hyd to rear. Mixer, 3406B Model CAT, LOADED! **\$34,000**



2008 Freightliner Century, Detroit 470 hp, 10 speed 602,000 miles, 3.90 ratio. 13,200#, steerable lift axle. Just arrived. **CALL FOR PRICES**



Ford L8000 168K original, 7.6 L Diesel Recon, 22' Bed & Hoist, Deluxe Interior, Hendrickson spring/beam **\$17,900**



"The Worker" These do the job! Set back axle, great cab, 450K mi FL 112 with Cummins Power! Jakes, 10 spd., air ride, Class 8 Clean. **Under \$18,000**

HOT! SAVINGS at Capital Press
1-800-882-6789
CapitalPress.com

BEST SELLERS . . .
"...The phone rang off the hook,"
Vanveldehuizen Dairy - Turner, OR
Call and list your BEST SELLER!
1-800-882-6789

R.B. BROWNS TRUCKING



2014 Kenworth T660 Cummins ISX 450 hp, RTLO16913A trans. DSP40 3.42 drive axles. PACCAR Air Ride susp., 228" WB. LP. 22.5 on alum. 62" sleeper with fairings, 520,000 miles. #R885. **\$41,500**



2005 East 48'x102" Spread axle air with scales. NUVAN curtain top with solid rear doors. Aluminum wheels. #T185. **\$23,900**



2000 East 48'x102" Spread axle air with scales, tarp boxes. LP22.5 on aluminum wheels. NUVAN roll top. #T170. **\$15,500**

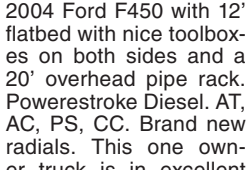


2005 East 48'x102" Spread axle air, tarp boxes, air scales, #T189. **\$17,900**



2000 East 48'x96" Spread axle air, tarp boxes, air scales, #T157 & T167. **\$11,900**

5758 Crater Lake Ave. • Central Point, OR
Contact Ron Weathers
541-601-0635 or 541-826-2418
rweathers@rbrowns.com



2004 Ford F450 with 12' flatbed with nice toolboxes on both sides and a 20' overhead pipe rack. Powerstroke Diesel. AT, AC, PS, CC. Brand new radials. This one owner truck is in excellent condition and has good fleet maintenance. Work ready. \$7900. Located in Twin Falls Id. Call 208-613-0050



2000 W900 Kenworth, 4 axles, 3406e, 18 speed, new paint, \$48,000. Silverton, OR. 503-932-0766



(3) F450's 2002/2003 aluminum dump bed or 5th wheel, V10 gas, low mileage, \$14,000 each. Jacksonville, OR. 541-621-4401
chrisaccra@yahoo.com



Kenworth Water Truck: 3500 gallon, new Gorman pump, new rubber, Ex municipality, low miles, \$9500. Estacada, OR. 503-407-3055, 503-407-9058

KENWORTH T800 SHORT LOGGER



SHORT LOGGER PACKAGE.....\$129,000
#5 R118648, 2006, Cummins ISX CM870 (475hp), Jake Brake, 18-spd. trans., single spd. (RTLO18918B) Eaton rear-ends (D46-170hp), 4:10 gears w/locker, 3/4" steel frame, 267" WB, 2 Axle Whit-Log trailer, Vulcan electronic scales.
HENDRICKSON HAUL-MAX WALKING BEAM SUSPENSION

KENWORTH T800 4-AXLE CHASSIS



Your Choice \$55,000
7 TRUCKS FOR SALE
Cummins ISX engines, 18-spd. trans. (RTLO18918B), single spd. Eaton rear-ends 4:10 or 4:11 gears w/locker, **HENDRICKSON HAUL-MAX WALKING BEAM SUSP.**

- #8 R179266 2007, D46-170HP rears, 254" WB, 475hp...\$55,000
- #17 R118639 2006, D46-170HP rears, 252" WB, 475hp...\$55,000
- #34 F064739 2004, DSP-463P rears, 269" WB, 475hp...\$55,000
- #38 R892655 2002, DSP-463P rears, 252" WB, 475 hp...\$55,000
- #49 R185918 2007, D46-170HP rears, 252" WB, 475hp...\$55,000
- #69 R148686 2006, D46-170HP rears, 252" WB, 475hp...\$55,000
- #87 F064742 2004, DSP-463P rears, 252" WB, 475 hp...\$55,000
- #114 R892657 2002, DSP-463P rears, 252" WB, 475 hp. **\$55,000**

ALL ARE CLEAN & IN EXCELLENT SHAPE!
MAINTENANCE RECORDS - REGULAR OIL SAMPLES

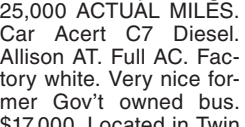
For more info: www.irelandtrucking.com
Thomas H. IRELAND INCORPORATED
Call Charles Ireland 541-863-1501 Myrtle Creek, OR



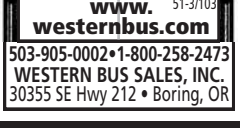
1993 MACK Dump Truck, 4 axle, 16' box, E7-350 Engine 13- Speed, runs great, \$28,500. Tualatin, OR. Call or Text 503-260-0303



1997 Chevy C7500 SA dump truck: 6-8 yard, CAT 3116 engine 6 speed, 33,000 GVW, \$17,000. Tualatin, OR. 503-260-0303



2008 Bluebird Visions Bus. 48 passenger 25,000 ACTUAL MILES. Car Acert C7 DIESEL. Allison AT. Full AC. Factory white. Very nice former Gov't owned bus. \$17,000. Located in Twin Falls Id. 208-613-0050



Used Buses
www.westernbus.com
503-905-0002 • 1-800-258-2473
WESTERN BUS SALES, INC.
30355 SE Hwy 212 • Boring, OR

211 Pickups
2015 Silver Dodge Laramie 1500, crew cab, 4x4, 1 owner, full running boards, leather, Tonneau canopy, 7642 miles, spotless, \$36,000. Eugene, OR. 541-342-3837 eves after 6pm

2008 Toyota Tundra: 160K miles, good condition. 5.7 liter engine. Reduced to \$15,900. Nampa, ID. Call 208-369-3053 or 208-880-7831

(20) Chelsea Series 41 & 42 PTOs. (10) shafts. Will sell separately. Brooks, OR. 503-347-5367



1977 Ford 3/4 Ton: 54K miles, good condition, \$3500. Ontario, OR. 541-889-8941

1993 Chevrolet: 1 ton Flatbed with hoist, \$3500. 2001 GMC Duramax, \$7000. 1988 Toyota, 1/2 ton, \$1800. Spray, OR. 541-468-2000

#1 Pickups: Used Power Stroke & Dodge Diesel 4x4. Call about great tax advantages! Wallowa, OR. 541-569-2352



2003 Ford 550 pickup truck, cabin chassis, \$5000. Silverton, OR. 503-932-0766

2007 Dodge SLT: Regular cab, Cummins 6- speed, 4x4, exhaust brakes, 1 owner, \$15,500! Licensed to Dec. 2020. Clackamas, OR. Dennis, 503-789-4554

222 Truck/ Auto Parts & Accessories
3406 B Model CAT truck engine: retarder, low miles on out frame overhaul, \$5000 OBO. Long Creek, OR. 541-620-8031

Truck Side Racks: for 22ft. bed, \$3,000. Jefferson, OR. 541-327-1645

228 Tires & Wheels
UTILITY TRACTOR TIRES: Ribbed, R-4 tires and rims that fit many utility tractors. These have been used 1260 hours, manly on grass. Lots of tread left. Two sets, mounted, ready for your tractor. Front 25x8.5-14, Rear 15.0-19.5. \$425 per set. Chiamacum WA. More info: mvcc@olympen.com or Russ 360-732-4446

Flotation Tires: New-Used
42x25x20, 48x25x20
48x31x20, 44x41x20
54x37x25, 67x34x25
66x43x25, 66x44x25
73x44x32, most metric sizes and rims for all of the above. Chowchilla, CA. 209-246-3309

(3) Pairs 68-50-32: 6 ply on wheels 95%
(3) pairs 54-31-26: 10 ply turfs on wheels: 67-34-30 10 ply loggers. 66-43-25 Tubes. 48-31-20 Tubes. Chowchilla, CA. 209-246-3309

(4) 13.6x28 knobby, (4) turf, 18.4x16.1. (2) 18.4x34 traction duals, (6) 14.9x28 traction duals. (2) 18.4x26 knobby. Creswell, OR. 541-954-2357

PAPÉ PAPÉ KENWORTH

EUGENE: 1-800-344-1191
PORTLAND: 1-800-344-6282
MEDFORD: 1-800-344-5211
www.papekenworth.com



2012 Kenworth T270, 200 hp Allison trans., reefer body, 197,000 miles. **\$37,000 \$35,900**



1999 Kenworth T800, 4-axle, CAT 3406E, 550hp, RTLO 16913A trans., 214" WB, pup trailer. **\$125,000**



2000 Freightliner, CAT C-12 eng., 4-axle, 12K front, 40K rear, 225" WB. **\$12,900**



2005 PETE 387, CAT C-15, 18-speed, raised sleeper, 800,000 miles. **\$12,900**



1999 Freightliner FLD112, Cummins M11 Celect eng., Eaton-Fuller RTLO14610 trans., 203" WB, all records. **\$18,000**



1992 Kenworth T800, N14 Cummins, 370 hp, 15-sp, 235" WB, 8' log trailer. **\$32,500**

51-2/100

CHRISTMAS & NEW YEAR'S DEADLINES

For December 28th Issue:
News Display & Legal Ads - Friday, Dec. 21st @ Noon
CLASSIFIED REMAINS THE SAME
Class Display - Wednesday, Dec. 26th @ 10 am
Class Liners - Wednesday, Dec. 26th @ Noon

For January 4th Issue:
News Display & Legal Ads - Friday, Dec. 28th @ Noon
CLASSIFIED REMAINS THE SAME
Class Display - Wednesday, Jan. 2nd @ 10 am
Class Liners - Wednesday, Jan. 2nd @ Noon

1-800-882-6789
www.capitalpress.com

Capital Press
EMPOWERING PRODUCERS OF FOOD & FIBER
51-2/HOU

LOCK IN YEAR END TAX SAVINGS NOW!



2007 JLG Scissor-Lift. Model 1930 ES. 1,513 hrs. 500 lb. cap. 23 3/4' working height. **\$5,900**



1990 JCB 530B Extended Reach Fork. 8,000 lb. Cap. Perkins Diesel. **\$28,000**



2009 Ford Escape. Hybrid, 4x4, 2.5L AT. **\$6,500**



2001 International 4800 4x4 Manlift/Utility, 42 1/2" w.h. DT-466 & A/T. **\$18,500**



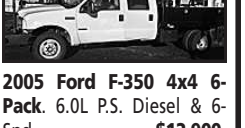
2013 Ford F-350 Cab & Chassis. 84" CA. 6.7L Diesel & A/T. **\$8,900**



2002 Ford F-450 Utility/Service trk. 6.8L V-10 & A/T. **\$8,900**



2002 Ford Taurus, 4-Door Sedan. 3.0L V-6 & A/T. **\$3,900**



2005 Ford F-350 4x4 6-Pack. 6.0L PS. Diesel & 6-Spd. **\$12,900**



1999 International 2574 Tandem-Axle Hydro-Vac. Vactor 2100. **\$49,500**

ChambersMotorCo.com
(503) 663-7200 • Boring, OR
51-2/103

DORNGOODDEAL.COM



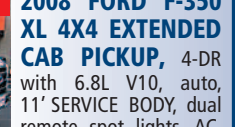
2008 FORD F150 4X4 UTILITY TRUCK V8, auto, air cond., tilt wheel, cruise control, only 75k actual miles, fleet owned and maintained. Really nice truck. **\$13,995**



2008 FORD F-350 XL 4X4 EXTENDED CAB PICKUP, 4-DR with 6.8L V10, auto, 11' SERVICE BODY, dual remote spot lights, AC, PS, PB, 71k actual miles **\$23,995**



2005 FORD F250 4X4 SERVICE TRUCK. 5.4 V8, auto, tilt, cruise control, AM/FM stereo, cloth bench seat, locking hubs, pipe rack, Stahl utility box, trailer brakes, trailer package. **\$13,995**



2001 FORD F450 SUPER DUTY 12' DIAMOND PLATE FLATBED, V10, auto, air, 111K actual miles, diamond plate flatbed with a new Harsh hoist. One owner. **\$17,995**



7.3 DIESEL 1997 INTERNATIONAL NAVISTAR 14' UTILIMASTER VAN. Vehicle equipped with cab air cond, automatic trans, good tires, 7.3L diesel, Allison transmission, GVWR 23,200, front axle 6,000lbs, rear axle 17,500lbs. **\$10,995**

DORN BROS. TRUCK SALES, Inc.
SINCE 1947
VOTED QUALITY DEALER OF THE YEAR.
3130 PORTLAND RD. • SALEM, OR (503) 585-4731
Prices good for 1 week from publication date.
51-2/106



1981 KENWORTH w/ 4500 gal. steel tank, Hendrickson suspension, Big Cam Cummins, 13 spd. Has a small pump. Will deliver to Portland for \$400. December Sale Price. **\$9,950**



(2) 24' X 8' EQUIPMENT TRAILERS with beavertail ramps, pintle hitches & air brakes. These are well taken care of, ready to work trailers. 2000 Trail King - **\$5,950**. (1) 1989 Interstate - **\$5,950**



2007 Dodge SLT: Regular cab, Cummins 6- speed, 4x4, exhaust brakes, 1 owner, \$15,500! Licensed to Dec. 2020. Clackamas, OR. Dennis, 503-789-4554



2007 Dodge SLT: Regular cab, Cummins 6- speed, 4x4, exhaust brakes, 1 owner, \$15,500! Licensed to Dec. 2020. Clackamas, OR. Dennis, 503-789-4554



2007 Dodge SLT: Regular cab, Cummins 6- speed, 4x4, exhaust brakes, 1 owner, \$15,500! Licensed to Dec. 2020. Clackamas, OR. Dennis, 503-789-4554

Bruce Chevrolet
"A Name You Can Trust"
888-547-5535

FULL LINE OF CHEVY PRODUCTS!
Landscape Bodies
Dump Bodies • Hi-Cubes
Cargo Vans • Flatbeds

1 @ \$43,999
NEW 2018 Chevy 4500 LCF, 12 ft 6.0L, conv. pkg. #1880328
*ADJ. MSRP \$57,989.06 • \$13,990 BDC

2 @ \$23,888
NEW 2017 Chevy Silverado 1500 Reg. Cab, Auto Tow pkg. #780233, #780149
MSRP \$29,960, less \$6,072 BDC

2 @ \$19,999
NEW 2017 Chevy City Express LS Model Equipped. #780068, #780072
MSRP \$23,400, less \$3,401 BDC