

**825 Fertilizer**

**Chicken Compost**  
Processed Chicken Manure Compost. **Certified Organic.** Ground processed and screened for easy handling. Fast Delivery Available. Truck scale available. We deliver almost anywhere in Washington State. Mossyrock, WA. Please Call Us At: 360-880-2128

**826 Organic**

**Organic Alfalfa:** CERTIFIED, 1st, 3rd cutting, 3x4 bales, \$190/ton. Delivery available. Eastern OR. 541-823-2769

Approx 700 tons **organic wheat hay**, \$165/ton. Approx 450 tons **organic barley hay**, \$165/ton. All hay in 3x4 bales. Klamath Falls, OR. 541-892-2706

**Organic Big Bales**  
Alfalfa Feeder Hay, \$160/ton. Straw available. Delivery Available. Ephrata, WA. 360-305-9797

**CERTIFIED ORGANIC** Triticale/ Alfalfa Mix. Grass Hay. Available in 3x4 and 3- string bales. Othello, WA. 509-989-2141

**828 Misc for Sale**

WANTED/ NEEDED small freezer for senior facility in Idaho Falls, ID. donation or cheap. Call Chaplain Anthony 605-208-0942

Treadle sewing machine, folds down into wooden 4 drawer cabinet, \$100 OBO. Cash only. Rainier, OR. 503-556-1303, 503-484-4592

Mom's pickle crock, \$45 OBO. Cash only. Rainier, OR. 503-556-1303, 503-484-4592

**869 Livestock Equip. & Supplies**

**Livestock Panels:** 16' (6) rail, (3) brace, \$128 each. 12' panels, (6) rail, (2) brace, \$96. Bow gates, all lengths and sizes. These panels are new Green color, hundreds available. **Heavy 16' Feeder Panels**, \$330 each. La Grande, OR. 541-805-9279, 541-963-6258

Portable Double 12 complete milking parlor for sheep or goats. Fully equipped, \$9500. Turner, OR. 503-930-1706

Feed Mixers: RotoMix IV 184-10, Farmhand G40, pictures available, \$4000 each. Kimberly, OR. 541-934-2148

(4) B & W big bale Flex HAY FEEDERS, \$200 each. Othello, WA. 509-760-3276

•Monster big bale feeders for single or double bales •Heavy duty gates •Continuous fence panels •Oil field pipe •Posts cut to order up to 7-5/8 od  
jonspipeandsupply.com  
Orland, CA. 530-949-2285

**872 Dairy Eq. & Supplies**

Kiln Dried Shavings: truckload/ minimum 18 unit load, Forest Grove, OR. 503-849-0216

**Polydome Calf Nursery:** Hutches available for various climates. Western Polydome, Inc. Monroe, WA. 800-822-5837

**CLASSIFIED LINE ADS GET RESULTS!**  
1-800-882-6789  
CapitalPress.com

**NEW MANURE SPREADER**

400 bu. • BUY OR RENT  
Call Scott at Barr-Tech  
Compost/Organics Recycling  
Authorized Dealer of PIK RITE Spreaders  
509-590-0437  
www.Barr-Tech.net  
Sprague, WA 45-3/104

**875 Tanks & Storage**

(6) American Grain Bins: total 1200 ton storage. FREE. You remove. Salem, OR. 503-990-1219



20' & 40' Storage Containers: WE WILL MEET OR BEAT ANYONE'S PRICE. Wind and weather Tight, Quality doors, floors, & hinges. Container delivery extra fee. Viking Cargo Containers Inc. CALL or TEXT: 503-388-4540  
vikingcargocontainers.com

**55 GALLON DRUM SALE:** Plastic drums \$8.50 each, 3 for \$7.50, 6 for \$7, 9 for \$6.50, 12 for \$6, 24 for \$5, 30 or more for \$4. Great for water storage. Loading time: Monday-Thursday 9:30-4:30, Friday 9:30-3:00 only. GloryBee Factory Store, 29548 B Airport Rd, Eugene, OR. 541-689-0913

**875 Tanks & Storage**

**3000 Gallon Tanks- \$1600**  
Other sizes available. Diess Feeds 5590 West 11th, Eugene OR. 97402. Call for availability Norm @ 541-510-3501  
nwaterbury@gmail.com

**FUEL TANKS:**  
(1) 5000 gallon UL2085, split 2500/2500. 1000, 2000, 3000 and 5000 gallon double walled tanks. Salem, OR. Peter 503-881-9803



**STAINLESS STEEL TOTES:** Good condition! Gate valves, can be pressurized, DOT 57, test pressure 9, 260 gallon, Tare Wt. 362lb Gross Wt. 3400lbs, fork lift shoes, top lids. Only contained food product. Prices range from \$879 to \$989 depending on condition. Loading time: Monday-Thursday 9:30-4:30, Friday 9:30-3:00 only. GloryBee Factory Store, 29548 B Airport Rd, Eugene, OR. 541-689-0913

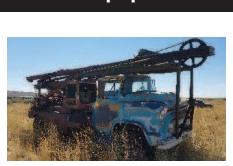
**878 Generators**

**CAT Generator D333:** 100kW, \$5500 with panels. Ridgefield, WA. 360-903-6643



Mobile Solar Model MS-325 generator in Excellent Condition, \$19,750 Rated 7.2W, 12KW  
Prineville, OR. 503-209-5852

**884 Well-Drilling Equip.**



Well drilling truck and tools. Second truck included. \$40,000. Crane, OR. 541-493-2479

71 Speed Star drill rig: 5th wheel mounted, very good condition, \$6500 Firm. Sacramento area, CA. 530-742-2785

**887 Irrigation Equip.**

1/4 mile Western Wheel Line, \$4000. Baker City, OR. 541-519-5125 Leave Message.

WANTED: irrigation main line, 5", 6" and 8" supply hydrants. Wade rain and/or Ringlock. Salem or surrounding area, OR. 971-312-2076

**IRRIGATION EQUIPMENT BOUGHT. SOLD. RENTAL.**  
Design of Effluent Handling Systems - Gates, Valves & Aerators  
New & Used Parts.  
• Aluminum Pipe  
• Certalok  
• Siphon Tubes • HDPE  
• Sand Media Filters  
• Wheel Lines • Pumps  
Pacific Southwest Irrigation  
Office: (209) 460-0450  
Fax: (209) 982-1832  
www.pacsouthwestir.com  
Carlos (209) 481-7677  
Jim (209) 986-0099  
44-5-2/102

**887 Irrigation Equip.**

**Used Pivot:**  
•Brand Sargent- 5 tower, 802' long  
•Galvanized 6 5/8" pipe  
•Reinke master control panel computer  
•Tires 11.2 x 22  
•Zimmatic cable alignment  
•2 HP booster pump with SR100 end gun  
•Sprinkler drops hose with 15# Regs IWOB  
•Spur Drive center motors- Sprinkler lube oil in gear box. \$16,000 loaded on trailer. Warden, WA. Call John 509-531-9012, 509-349-7364

WANTED: water rights enough for 40 acres, that's transferable in the state of Washington. 509-547-6431

**Pivots:** Good, various lengths, all brands & late models. No rust. Plus buried wire. Call Keizer, OR. Cell 503-881-3232, 503-390-3210



180HP Pump Engine: 5.9 Cummins Diesel, on trailer, new twin disc clutch, all safety switches, runs good, \$10,000. Weiser, ID. 208-549-0085

Wade rain pipe, approx 90 pieces, 4x30 main line. 3" & 4" fittings. Forest Grove, OR. 503-713-3522

**(75) Used Pivots:** Engines, pumps. Garden Valley, ID. Call Mike at 208-420-1480, or see www.pivotsplus.com

**Used Pivot:**  
•Brand- Pierce- 8 Tower, 1256' long  
•Galvanized 6 5/8" pipe  
•Pierce stainless master control panel  
•Pierce tower box alignment  
•Sprinklers- drops with Nelson rotators  
•No end boom  
•No booster pump or end gun  
•Tires 14.9 x 24. \$12000. Pasco, WA. Call John 509-531-9012, 509-545-8420

**Used Valley Circle: 1993 Valley 6000**  
Priced to move  
•1288', 8 Towers  
•1 thru 5- 164' spans  
•6 thru 8- 146' spans  
•Overhang 30'  
•11X24.5 tires, hose drops with rotators  
•Nelson SR100 end gun with booster pump  
•Cams pivot panel.  
\$21,000. Warden, WA. For appointment Call Tom 509-750-4302

(200) Hand line pipes 3"x40', \$50/piece. Burns, OR. 541-493-2772



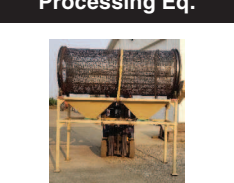
Westinghouse IRRIGATION/ HYDRANT PUMP assembly: 100hp, 480/277v, 3ph 1500 gpm, 150"Lx55"Wx45"H. Includes soft start controller/ panel. Good condition, \$7800 OBO (shipping extra). Ferrdale, WA. 360-380-2907

**890 Packing/ Processing Eq.**

St Regis 2R positive displacement pump with Sterling 1/2 hp variable speed motor & gear reducer, 220/440 volt, forward and reverse controls. Some parts missing, \$150. Eugene, OR. Contact Julie Crooks 541-689-0913

**887 Irrigation Equip.**

**890 Packing/ Processing Eq.**



Hazelnut Sizer. Steel frame and drum. 14mm and 16mm hole size. 3 phase motor. Overall height 10'6". Stand 4'x9'10". Drum 4'x10' about 5 foot each section. \$4000. Lynden, WA. 360-988-9240

Pacer 2" Centrifugal pump Model SE2EL D2 OC with 2HP 208-230/460 volt 3 phase motor on portable cart, \$148. Eugene, OR. Contact Julie Crooks 541-689-0913

**896 Forklifts**

CAT Forklift: 5,000 lb. capacity, new cylinder, propane, \$5000 OBO. Goldendale, WA. 509-773-5598

Hyster Diesel H150F: 16,000 lb., new Deutz motor, no leaks, side-shift, Microlock brake, very reliable, \$16,000 OBO. Molalla, OR. 503-475-4116



2004 Manitou MT732 7,000 Lb Reach Forklift, New Tires, \$34,500. Wilsonville, OR. 503-260-0303

**Used Lift Trucks**  
Also New & Used Parts  
All sizes, makes & prices  
**LIFT TRUCK SERVICE**  
888-890-1450  
forkliftsales.com  
Ellensburg, WA  
44-48-2/104

**899 Heavy & Indust. Eq.**

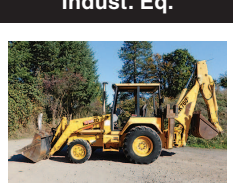


20' & 40' Storage Containers: WE WILL MEET OR BEAT ANYONE'S PRICE. Wind and weather Tight, Quality doors, floors, & hinges. Container delivery extra fee. Viking Cargo Containers Inc. CALL or TEXT: 503-388-4540  
vikingcargocontainers.com



Snorkel 60' Stick Boom Man Lift: 300 lb capacity, 2011 yr., 1560 hours. Annual inspection, good to June 2019. Electric Generator power to basket. Duetz Diesel, 4x4. Nice. \$24,500. Delivery Available. Gaston, OR. 503-789-3726

**899 Heavy & Indust. Eq.**



1996 Kobelco TLK760, backhoe works good, \$17,500. Wilsonville, OR. Call or Text 503-260-0303



**D-6 H U-dozer** with tilt and ripper, near new engine and hydraulic pump, \$86,500. Salem, OR. 503-362-3055



**CAT 623-B:** Self-loading scraper, good condition, Reduced \$33,500. Salem, OR. 503-362-3055

**CAT LOADER:** 966C, SN# 76J11108, rebuilt 3306PC, 23.5x25 tires, cab, ROP. Clatskanie, OR. 503-728-2548, artdianej@gmail.com

**REPLACEMENT DECAL SETS**

Construction, Forestry & Ag Equipment. Fast, Knowledgeable, Reliable Service. 215-536-5339 email: info@CustomServicesCompany.com  
Thousands of sets, Old & New, in our digital inventory.  
www.QuipCal.com



**CAT D5M LGP:** 1997 angle dozer, finger tip steering, \$46,500. Salem, OR. 503-362-3055



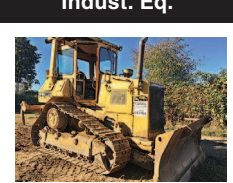
Takeuchi TL150: enclosed cab, 3000 hours, freshly painted, \$26,950. Sandy, OR. Call Pepe 503-544-3232, Pat 503-407-9062

**902 Farm Equip. Parts**

**BIG TRACTOR PARTS, INC.**  
~ GEARED FOR THE FUTURE ~  
**STEIGER TRACTOR SPECIALIST**  
• 1. We are your source for new & used Steiger drivetrain parts Series 1 - 9300 Series.  
• 2. We rebuild Spicer manual transmissions, Fuji power shift transmissions, dropboxes & axle with ONE YEAR WARRANTY!  
• 3. We now rebuild computer control boxes for Steiger tractors 1982-1999.  
**800-982-1769**  
www.bigtractorparts.com  
902-5-58-2/102

**899 Heavy & Indust. Eq.**

**899 Heavy & Indust. Eq.**



CAT D4H: enclosed, cab, 6 way blade, ripper, \$32,500. Sandy, OR. Call Pepe 503-544-3232, Pat 503-407-9062



Terex TX650: 4x4, rear box scraper, PTO, new engine, \$19,500. Sandy, OR. Call Pepe 503-544-3232, Pat 503-407-9062



Hitachi Zaxis 120: 3 bucket, hydraulic coupler, thumb, \$39,500. Sandy, OR. Call Pepe 503-544-3232, Pat 503-407-9062



**CASE INDUSTRIAL PARTS**  
We sell genuine, after market, and used CASE parts at discount prices nationwide. Call For Free Catalog.  
**CENTRAL EQUIPMENT**  
AFTER MARKET & USED PARTS  
Medford, OR  
(888) 593-8749  
44-5-3/100

Thousands of sets, Old & New, in our digital inventory.  
www.QuipCal.com

**Quality Used EQUIPMENT & ATTACHMENTS**

• INDUSTRIAL  
• COMMERCIAL  
Please visit our Website  
www.amtractor.com  
for a complete list of Machines and Attachments  
**American Tractor**  
Our Toll Free #  
888-499-8980  
Call Cameron Noble or Eric Hunt  
CENTRAL POINT, OR  
45-1/100

**902 Farm Equip. Parts**



**902 Farm Equip. Parts**

**RIVERBROOK FARM • HAULING SERVICE**  
Brooks, OR  
**WE HAUL!**  
• Building Supplies • Farm Equipment  
• Construction Equipment • Heavy Equipment  
• Granular Fertilizer • Grain/Wheat  
888-393-1819 • www.riverbrooktrucking.com  
45-3/106

**907 Nursery Equip. & Supplies**

**907 Nursery Equip. & Supplies**

**907 Nursery Equip. & Supplies**

**902 Farm Equip. Parts**

Starters, alternators, and generators. Call 503-364-3650 or visit Walz's Rebuild - 348 Market St. NE., Salem, OR.

T.D. 18 International: top and bottom rollers rollers, tilt hydraulic ram, PTO shaft, rear end axle McArthur, CA. Call 530-336-6841 After 4PM

CAT Diesel Engine: 3306PC, spacer plate, long block. 1693 CAT engine, take out, complete. Clatskanie, OR. 503-728-2548  
artdianej@gmail.com

Subscribe Now To Capital Press And Get Connected Directly To Regional Agricultural News! Call 1-800-882-6789

**905 Antique Farm Eq. & Parts**

Old farm scale with weights, \$90 OBO. Cash only. Rainier, OR. 503-556-1303, 503-484-4592



1960 John Deere 430T Tractor: power steering, 5 speed transmission, live PTO, hydraulics, 3 point hitch, SN#160969. \$8500 or best reasonable offer. Eugene, OR. (541)689-4136

**902 Farm Equip. Parts**

**NEW, USED, AND REMAN PARTS**  
**TOLL FREE: 1-877-928-1646**  
32427 OLD HWY 34, TANGENT, OR 97389  
Combine Parts  
Rebuild Kits  
Seats w/Air Suspension \$1,025  
Reman Engines for Case/IH, John Deere, and Ford  
JD 4010, 4020 Clutch Kits \$715  
Hitachi Zaxis 120: 3 bucket, hydraulic coupler, thumb, \$39,500. Sandy, OR. Call Pepe 503-544-3232, Pat 503-407-9062  
**SALVAGED TRACTORS**  
Farmland Tractor Supply  
Parts@Farmlandtractor.com  
45-1/100

**COMBINE HEAVEN**  
R.I.P.  
Reasonable Implement Pricing  
See Our Combine Dance on YouTube  
FRESH IN FOR PARTS ONLY  
**RECENT ARRIVALS**  
(3) IH 2188 • IH 1688 4x4  
JD 8820 II  
JD 9610 • (2) JD 9600 HILLSIDES  
JD CTS 9660 STS 9610 9600 9500 9400 8820 8820 II 7720 7700 6622 6620 6602 6600 6600SH 4400 105 95EB 95 Late 95 Hillside  
NH TR 96 TR 95 TR 85 TR 75 TR 70 IH 2188 1688 1680 1666 1660 1480 1460 1440 915 815 715 403  
**LOTS OF TRACTORS AND IMPLEMENTS TOO!**  
**Nyssa Tractor & Implement**  
Celebrating 28 years in the agricultural machinery business.  
Our yard has 4.5 miles of road, with machinery on both sides.  
FREE TOURS GIVEN DAILY.  
Call Toll Free: (833) 372-4020  
www.nyssatractor.com  
sales@nyssatractor.com  
Nyssa, OR  
45-2/108

**907 Nursery Equip. & Supplies**

**907 Nursery Equip. & Supplies**

**ERNST IRRIGATION**  
Jill has **FLIPPED!**  
Nozzles for FREE?  
Gaskets for FREE? (up to \$2.75 each max.)  
SPRINKLERS \$3.75 off?  
PIPE REPAIR \$10 off Each Stick  
...and there are many more!  
Call Jill or the parts staff for further details. We'll even help fill out the paperwork!  
Ask our staff about Production Efficiency Programs. We can handle it!  
\* All items subject to Energy Trust conditions and approval. Energy Trust Incentives subject to Energy Trust qualifications. All items limited to inventory on hand.  
Trade Ally of EnergyTrust of Oregon  
**www.ErnstIrrigation.com**  
20179 Main St., St. Paul, OR 97137  
(503) 633-1111  
45-3/100

**OREGON VALLEY GREENHOUSES INC.**  
Greenhouse Manufacturing & Supplies  
**Specializing in Heavy Duty structures to cover all your greenhouse needs**  
Standard and Custom sizes available  
503-678-2700  
20357 HWY 99E  
AURORA, OR 97002  
800-347-2701 (outside OR)  
info@ovg.com www.ovg.com  
45-1/106