

**887 Irrigation Equip.**

**Pivots:** Good, various lengths, all brands & late models. No rust. Plus buried wire. Call Keizer, OR. Cell 503-881-3232, 503-390-3210



180HP Pump Engine: 5.9 Cummins Diesel, on trailer, new twin disc clutch, all safety switches, runs good, \$10,000. Weiser, ID. 208-549-0085

WANTED: irrigation main line, 5", 6" and 8" supply hydrants. Wade rain and/or Ringlock. Salem or surrounding area, OR. 971-312-2076

Wade rain pipe, approx 90 pieces, 4x30 main line. 3" & 4" fittings. Forest Grove, OR. 503-713-3522

**IRRIGATION EQUIPMENT BOUGHT. SOLD. RENTAL.**

Design of Effluent Handling Systems - Gates, Valves & Aerators New & Used Parts.  
• Aluminum Pipe  
• Certa-lok  
• Siphon Tubes • HDPE  
• Sand Media Filters  
• Wheel Lines • Pumps

Office: (209) 460-0450 Fax: (209) 982-1832 www.pacsouthwestir.com Carlos (209) 481-7677 Jim (209) 986-0099 44-5-2102

**890 Packing/ Processing Eq.**

Pacer 2" Centrifugal pump Model SE2EL D2 OC with 2HP 208-230/460 volt 3 phase motor on portable cart, \$148. Eugene, OR. Contact Julie Crooks 541-689-0913



Hazelnut Sizer. Steel frame and drum. 14mm and 16mm hole size. 3 phase motor. Overall height 10'6". Stand 4'x9'10". Drum 4'x10' about 5 foot each section, \$4000. Lynden, WA. 360-988-9240

St Regis 2R positive displacement pump with Sterling 1/2 hp variable speed motor & gear reducer, 220/440 volt, forward and reverse controls. Some parts missing, \$150. Eugene, OR. Contact Julie Crooks 541-689-0913

**893 Logging Equip.**

Chip trailer 53' 3 axle aluminum. HD5 with clearing rake. Hough front-end loader. Make offer. Banks, OR. 503-324-4006

**896 Forklifts**

Hyster Diesel H150F: 16,000 lb., new Deutz motor, no leaks, side-shift, Microlock brake, very reliable, \$16,000 OBO. Molalla, OR. 503-475-4116



2004 Manitou MT732 7,000 Lb Reach Forklift, New Tires, \$34,500. Wilsonville, OR. 503-260-0303

CAT Forklift: 5,000 lb. capacity, new cylinder, propane, \$5000 OBO. Goldendale, WA. 509-773-5598

**Used Lift Trucks**

Also New & Used Parts All sizes, makes & prices LIFT TRUCK SERVICE 888-890-1450 forkliftsales.com Ellensburg, WA 44-48-2104

**896 Forklifts**

Case 580CK all terrain forklift: 21' lift, 5000 lb, good condition, \$4250. Canby, OR. 503-720-6751

**899 Heavy & Indust. Eq.**



**CAT DSM LGP:** 1997 angle dozer, finger tip steering, \$46,500. Salem, OR. 503-362-3055

**REPLACEMENT DECAL SETS**

Construction, Forestry & Ag Equipment. Fast, Knowledgeable, Reliable Service. 215-536-5339 email: info@CustomServicesCompany.com Thousands of sets, Old & New, in our digital inventory. www.QuipCal.com



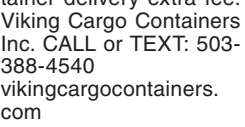
2014 Bobcat T590, 1800 hours, good condition, \$28,000. Gaston, OR. 503-789-3726

(2) Moxy 30 ton off highway dump trucks, \$70,000 each. D6R with cab, \$60,000. (2) TS-14 Terex scrapers, \$20,000/ both. Tacoma, WA. 206-947-0903

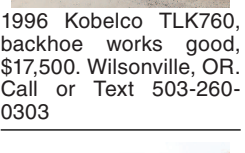
780 CASE Backhoe: motor problem, \$8500 OBO. Boardman, OR. 541-571-6601



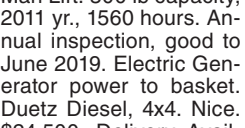
20' & 40' Storage Containers: WE WILL MEET OR BEAT ANYONE'S PRICE. Wind and weather Tight, Quality doors, floors, & hinges. Container delivery extra fee. Viking Cargo Containers Inc. CALL or TEXT: 503-388-4540 vikingcargocontainers.com



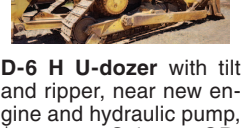
1996 Kobelco TLK760, backhoe works good, \$17,500. Wilsonville, OR. Call or Text 503-260-0303



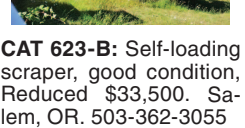
Snorkel 60' Stick Boom Man Lift: 300 lb capacity, 2011 yr., 1560 hours. Annual inspection, good to June 2019. Electric Generator power to basket. Duetz Diesel, 4x4. Nice, \$24,500. Delivery Available. Gaston, OR. 503-789-3726



D-6 H U-dozer with tilt and ripper, near new engine and hydraulic pump, \$86,500. Salem, OR. 503-362-3055



CAT 623-B: Self-loading scraper, good condition, Reduced \$33,500. Salem, OR. 503-362-3055



There Are Always Great Deals In Capital Press Classifieds. Call Now And Add Yours! 1-800-882-6789

**CASE INDUSTRIAL PARTS**

We sell genuine, after market, and used CASE parts at discount prices nationwide. Call For Free Catalog. CENTRAL EQUIPMENT AFTER MARKET & USED PARTS Medford, OR (888) 593-8749 44-3-100

**890 Packing/ Processing Eq.**

2014 Bobcat T590, 1800 hours, good condition, \$28,000. Gaston, OR. 503-789-3726

**902 Farm Equip. Parts**

Starters, alternators, and generators. Call 503-364-3650 or visit Walz's Rebuilt - 348 Market St. NE., Salem, OR.

**905 Antique Farm Eq. & Parts**

John Deere Model B: wide front axle, original paint, runs good, \$2500. Klamath Falls, OR. 503-881-3232, 503-559-3541

1960 John Deere 430T Tractor: power steering, 5 speed transmission, live PTO, hydraulics, 3 point hitch, SN#160969. \$8500 or best reasonable offer. Eugene, OR. (541)689-4136

**1-800-882-6789 CapitalPress.com**

**902 Farm Equip. Parts**

**ASSOCIATED TRACTOR SERVICE INC.**

NEW • USED • REBUILT PARTS PARTS • SERVICE • EQUIPMENT Satisfaction Guaranteed Since 1954 PARTS ★ SERVICE ★ EQUIPMENT

• Used Parts National Locator Services  
• BEGE Hydraulic Pumps & Parts

(800) 735-1301 • (209) 466-3003 1323 W. Charter Way • Stockton, CA 95206-1110 44-2102

**BIG TRACTOR PARTS, INC.**

~ GEARED FOR THE FUTURE ~

**STEIGER TRACTOR SPECIALIST**

- 1. We are your source for new & used Steiger drivetrain parts Series 1 - 9300 Series.
- 2. We rebuild Spicer manual transmissions, Fuji power shift transmissions, dropboxes & axle with ONE YEAR WARRANTY!
- 3. We now rebuild computer control boxes for Steiger tractors 1982-1999.

800-982-1769 www.bigtractorparts.com 902-144-1102

**NEW, USED, AND REMAN PARTS**

TOLL FREE: 1-877-928-1646 32427 OLD HWY 34, TANGENT, OR 97389



Combine Parts Rebuild Kits Seats w/Air Suspension \$1,025 JD 4010, 4020 Clutch Kits \$715



Reman Engines for Case/IH, John Deere, and Ford



SALVAGED TRACTORS



Farmland Tractor Supply Parts@Farmlandtractor.com 44-2100

**COMBINE HEAVEN**

R.I.P. Reasonable Implement Pricing See Our Combine Dance on YouTube



FRESH IN FOR PARTS ONLY COMBINES ONLY

**RECENT ARRIVALS**

JD 8820 II JD 9610 • (2) JD 9600 HILLSIDES (3) IH 2188 • IH 1688 4x4

JD CTS	NH TR 96
9660 STS	TR 95
9610	TR 85
9600	TR 75
9500	TR 70
9400	IH 2188
8820	2188
8820 II	1688
7720	1688
7700	1680
6622	1666
6620	1660
6602	1480
6600	1460
6600SH	1440
4400	915
105	815
95EB	715
95 Late	403
95 Hillside	

**LOTS OF TRACTORS AND IMPLEMENTS TOO!**

**Nyssa Tractor & Implement**

Celebrating 28 years in the agricultural machinery business. Our yard has 5 miles of road, with machinery on both sides. FREE TOURS GIVEN DAILY.

Call Toll Free: (833) 372-4020 www.nyssatractor.com sales@nyssatractor.com Nyssa, OR 44-3/108

**905 Antique Farm Eq. & Parts**



**907 Nursery Equip. & Supplies**

USED NURSERY CONTAINERS: Used, but reusable nursery containers. All sizes. Inventory changes daily. Call for current availability and prices. Sawyer Farms, Scio OR. 503-769-3417, juddsfarm@wvi.com (also wanted: used containers)

FRESH SAWDUST: Consistently fair pricing. End of Season Special Pricing! Forest-Grove, OR. For pricing call 503-849-0216

**908 Garden, Turf, Yard Equip.**

6' Power Aerator: PTO driven, 3/8 and 3/4 tines, extra tines, \$1500. Sparks, NV. 775-771-5838

**911 Hay Equip.**

•Monster big bale feeders for single or double bales •Heavy duty gates •Continuous fence panels •Oil field pipe •Posts cut to order up to 7-5/8 od jonspipeandsupply.com Orland, CA. 530-949-2285

Large Supply of Rebuilt New Holland Bale Wagons: Also buying New Holland bale wagons. Sod Busters Sales, Polson, MT. 406-883-2118

New And Used Parts: for all models New Holland bale wagons. Largest Inventory in North America. Sod Busters Sales, Polson, MT. 877-735-2108 or 406-883-2118

BALE WAGONS: Rebuilt New Holland 1085 bale wagon, sharp, \$57,500. Rebuilt 1988 New Holland NH1068 bale wagon, very sharp, \$47,500. Rebuilt New Holland 1079 bale wagon, \$70,000. New Holland 1075 diesel unit, \$35,000. Sod Buster Sales. Polson, MT. 406-883-2118

2012 John Deere R450 Windrower: 2790 engine hours with 994 header, Circle C conditioning rolls, \$59,000. OBO Fortuna CA. 707-845-8960



Hesston 9240: 14' with Circle C conditioners. 2500+/- hours. Cummins engine. 2 speed drive. Header reverser. Buddy seat, \$27,500. Deer Park, WA. 509-994-9520

New Holland 258 rake, \$2000. Fella TH790 tedder, \$8000. Forest Grove, OR. 503-713-3522

**RCO Baits**

Gophers • Squirrels Voles-Moles Dealer Locator 1-800-214-2248 Harrisburg, OR 44-3100

917 Orchard/Vineyard Equip.

Gregoire G2 Grape Harvester: bought it new, only used it 2 hours. I had used on in a vineyard in the Columbia Basin but the hills are to steep in The Dalles area so we are hand picking and have no continued use. Other than for "our" ground, these units are great pickers. https://www.bluelinemfg.com/products/detail.html?id=15 See one run @: https://www.youtube.com/watch?v=iS6N4X8Csqo \$125,000. The Dalles, OR. 360-609-1166

Flory 480 PTO Almond Harvester, good running machine, \$20,500. Turlock, CA. Call Arthur 209-606-3094

917 Orchard/Vineyard Equip.

Brax New Vermeer BPX9000 Bale Processor with floating tires. List price \$26,795, on sale for \$24,299. This fall 0% for 48 months or 1.9 for 60 months. Stk#12883 LaDuke & Fogle Equip, Colville, WA. 509-684-2575 www.ladukeandfogle.com

#1 Balewagons: Buy, Sell, New Holland 283 wide self-propelled, pull-type models, parts, tires, manuals. Caldwell, ID. 208-880-2889 www.balewagon.com

917 Orchard/Vineyard Equip.

**Chehalem Valley Orchard Equipment**



Come see us today for available harvest equipment NEW EQUIPMENT

- CVOE 8' brush fork Bob Cat wheel quick attach. \$2,200
- Riteway V scrapers w/hydes & roller, 10'.....\$6,900
- Guardian Ag & Prune Rite 20' & 25' towers..... Your Choice - Call for Price
- 324C Bump Cart, 4 tote w/chain..... In Stock
- Hy. Pruning Saw w/hoses & couplers.....\$1,600
- 490 Hazelnut Harvester..... In Stock

**USED EQUIPMENT**

- Prune Rite 20' tower.....\$14,500
- Weiss McNair 9800 special harvester.....\$29,000
- Weiss McNair 824 harvester w/larger 836 suction fans.....\$8,900
- Specialized Harvest sweeper, 1992, 80HP, J.D Motor, Field Ready.....\$23,000
- Ramacher 9600, self propelled Harvester, 1992 Hazelnut chain.....\$14,000
- 7'6" Tine Bar Flory head, like new.....\$8,500
- Infaco Electrocup model #F3010, fresh rebuilt with 6'10" extension, safety glove.....\$1,200
- Troy-Bilt Brush Grinder, 8 hp, like new.....\$800
- Shur Farms cold air drain, frost protection \$9,000
- Durand Wayland 300 gallon stainless vineyard or nursery sprayer.....\$5,500
- 6633 Cab Flory Sweeper. 13 hrs.....Call for price

Call us at (503)538-7739 www.chehalemvalleyorchardequipment.com or Come See Us at 24175 Dayton Ave. Newberg, Oregon 97132 44-1/106

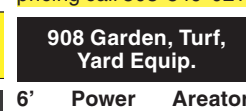
**911 Hay Equip.**

Freeman 5300 Big Bale Wagon, \$65,000. New Holland BW28 Bale Wagon, 3 string harrow bed, \$88,000. Silver Lake, OR. 541-480-3371

**LOOK!**

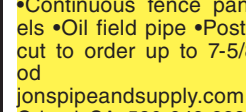
Wanted: 370 Freeman Baler with 15" chamber. Malin, OR. 541-891-1425

3 John Deere Swathers Model A400. Hours range from 1248 hours to 1451 hours. Asking \$60,000 each. For questions. Lovelock, NV. Contact Ron Burrows 775-742-2233



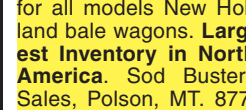
Hustler Bale Feeder CHX5000: Demo- unit, trailed, hydraulic, 5' wide table, big square or round bales. List \$19,390, Special price, \$16,500. Yakima Implement 1-800-572-2239 yakimple@qwestoffice.net

New Holland Balers: (1) BB900 @ \$14,500; (1) BB900, low hours @ \$26,500. Woodburn, OR. Greg Wilmes 503-969-8705



2012 John Deere R450 Windrower: 2790 engine hours with 994 header, Circle C conditioning rolls, \$59,000. OBO Fortuna CA. 707-845-8960

Hesston 9240: 14' with Circle C conditioners. 2500+/- hours. Cummins engine. 2 speed drive. Header reverser. Buddy seat, \$27,500. Deer Park, WA. 509-994-9520



New Holland 258 rake, \$2000. Fella TH790 tedder, \$8000. Forest Grove, OR. 503-713-3522

**RCO Baits**

Gophers • Squirrels Voles-Moles Dealer Locator 1-800-214-2248 Harrisburg, OR 44-3100

917 Orchard/Vineyard Equip.

Gregoire G2 Grape Harvester: bought it new, only used it 2 hours. I had used on in a vineyard in the Columbia Basin but the hills are to steep in The Dalles area so we are hand picking and have no continued use. Other than for "our" ground, these units are great pickers. https://www.bluelinemfg.com/products/detail.html?id=15 See one run @: https://www.youtube.com/watch?v=iS6N4X8Csqo \$125,000. The Dalles, OR. 360-609-1166

Flory 480 PTO Almond Harvester, good running machine, \$20,500. Turlock, CA. Call Arthur 209-606-3094

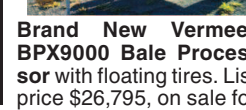
917 Orchard/Vineyard Equip.

Brax New Vermeer BPX9000 Bale Processor with floating tires. List price \$26,795, on sale for \$24,299. This fall 0% for 48 months or 1.9 for 60 months. Stk#12883 LaDuke & Fogle Equip, Colville, WA. 509-684-2575 www.ladukeandfogle.com

#1 Balewagons: Buy, Sell, New Holland 283 wide self-propelled, pull-type models, parts, tires, manuals. Caldwell, ID. 208-880-2889 www.balewagon.com

917 Orchard/Vineyard Equip.

**Chehalem Valley Orchard Equipment**



Come see us today for available harvest equipment NEW EQUIPMENT

- CVOE 8' brush fork Bob Cat wheel quick attach. \$2,200
- Riteway V scrapers w/hydes & roller, 10'.....\$6,900
- Guardian Ag & Prune Rite 20' & 25' towers..... Your Choice - Call for Price
- 324C Bump Cart, 4 tote w/chain..... In Stock
- Hy. Pruning Saw w/hoses & couplers.....\$1,600
- 490 Hazelnut Harvester..... In Stock

**USED EQUIPMENT**

- Prune Rite 20' tower.....\$14,500
- Weiss McNair 9800 special harvester.....\$29,000
- Weiss McNair 824 harvester w/larger 836 suction fans.....\$8,900
- Specialized Harvest sweeper, 1992, 80HP, J.D Motor, Field Ready.....\$23,000
- Ramacher 9600, self propelled Harvester, 1992 Hazelnut chain.....\$14,000
- 7'6" Tine Bar Flory head, like new.....\$8,500
- Infaco Electrocup model #F3010, fresh rebuilt with 6'10" extension, safety glove.....\$1,200
- Troy-Bilt Brush Grinder, 8 hp, like new.....\$800
- Shur Farms cold air drain, frost protection \$9,000
- Durand Wayland 300 gallon stainless vineyard or nursery sprayer.....\$5,500
- 6633 Cab Flory Sweeper. 13 hrs.....Call for price

Call us at (503)538-7739 www.chehalemvalleyorchardequipment.com or Come See Us at 24175 Dayton Ave. Newberg, Oregon 97132 44-1/106

**917 Orchard/Vineyard Equip.**

20125 Monchiero nut harvester, like new, \$135,000. Silverton, OR. 503-932-0766

**2013 Vrisimo low profile flail mower:**

10' cut width, 2' right offset, 540 PTO, 50 HP minimum required. \$7000. Silverton, OR. 503-873-4464, 503-991-7138

2010 Weiss McNair 9800P Hazelnut Harvester with Cart: Herbst Hi/ Lo rear dump cart. Harvester equipped with rear steering wheels. Cart with Herbst Desticker, can dump straight into truck. Excellent condition, \$55,000 for the pair. Silverton, OR. 503-873-4806

