

869 Livestock Equip. & Supplies

Monster big bale feeders for single or double bales Heavy duty gates Continuous fence panels Oil field pipe Posts cut to order up to 7-5/8 od jonspipeandsupply.com

Quick cut electric meat saw, good condition, \$500. Fort Rock, OR. 541-576-2237



2005 Elite 6-horse, from three 8x10 to six 4x10 stalls. Dividers store inside trailer. 8'4" interior height, fully insulated.



NEW, Never Used! Pearson complete chute system. Chute, head gate, adjustable alley, holding tub, palpating, \$12,000.

Powder River Calving Pen: \$3000 OBO. Turner, OR. 503-743-2741

Portable Powder River loading chute, excellent condition, \$3500. Cove, OR. (541)568-4878.

Like new sheep and goat tilt table from Sydeell. Very gently used for two seasons. \$1,000.

Livestock Panels: 16' (6) rail, (3) brace, \$128 each. 12' panels, (6) rail, (2) brace, \$96.

For-Most Calf Chute. Like new, used once. Death forces sale. \$1,500.

Looking for a farm or ranch? VISIT FarmSeller.com

872 Dairy Eq. & Supplies

BARRTECH advertisement for Hydra-Pull manure spreaders. Includes 10 models/sizes, rental options, made in USA. Authorized dealer of PIK RITE SPREADERS.

875 Tanks & Storage

872 Dairy Eq. & Supplies

Polydome Calf Nursery: Hutches available for various climates. Western Polydome, Inc. Monroe, WA. 800-822-5837

Kiln Dried Shavings: truckload/ minimum 18 unit load, Forest Grove, OR. 503-849-0216

Capital Press The West's Ag Weekly twitter.com/capitalpress

Large vertical banner for Capital Press The West's Ag Weekly with a Twitter follow button and social media icons.

872 Dairy Eq. & Supplies

Cloud Nine Farm: Grade A dairy near Vancouver WA closing. C. van't Riet (Holland) 52 gallon pasteurizer, 60 gallon bulk tank, 6ft. draining table.

875 Tanks & Storage

STAINLESS STEEL TOTES: Good condition! Gate valves, can be pressurized, DOT 57, test pressure 9, 260 gallon, Tare Wt. 362lb

WANTED: water rights enough for 40 acres, that's transferable in the state of Washington. 509-547-6431



PUMP & TANK: Viking 4125 Rotary 2" pump with 7.5 HP 230/460v 3ph motor, Viking helical gear reduction drive.

878 Generators

450' wheel line includes 4 wheel mover, wheels are 4"x5" diameter, \$2500. Colusa, CA. 530-682-9985

GENERATORS: Low hour takeouts, 20kW to 2000kW, diesel, propane, & natural gas.

887 Irrigation Equip.

450' wheel line includes 4 wheel mover, wheels are 4"x5" diameter, \$2500. Colusa, CA. 530-682-9985

878 Generators

CAT Generator D333: 100kW, \$6000 with panels. Ridgefield, WA. 360-903-6643



Mobile Solar Model MS-325 generator in Excellent Condition, \$19,750 Rated 7.2W, 12KW

887 Irrigation Equip.

(4) 1/4 mile wheel lines: 3 hydraulic and 1 mechanical, in good shape with levelers. Terrebonne, OR. 541-419-8370

(60) Used Pivots: Engines, pumps, Garden Valley, ID. Call Mike at 208-420-1480.

(3) Irrigation Reels: AVI, 800' hose, turbo, \$8500 OBO. Nelson, 1150' hose, turbo, \$9800 OBO.

Pivots: Good, various lengths, all brands & late models. No rust. Plus buried wire. Call Keizer, OR. Cell 503-881-3232.



Join Capital Press for the 5th Annual Paint the Paper Pink Campaign. Call Capital Press Line Ads 800-882-6789

2 Travis Irrigation Movers: 8HP Honda engines, good condition, 5 to 6 years old, approximately 900' of 4" pipe with self leveling sprinklers.

878 Generators

450' wheel line includes 4 wheel mover, wheels are 4"x5" diameter, \$2500. Colusa, CA. 530-682-9985

Advertisement for BISON PIPE & SUPPLY featuring large diameter pipe available. Contact: 800.764.7473

Advertisement for BARRTECH featuring Hydra-Pull manure spreaders. Includes 10 models/sizes, rental options, made in USA.

875 Tanks & Storage

887 Irrigation Equip.

Zimmatic pivot, 1980, 7 towers, 126' spans, 36' OH, 918' long, drops with rotators, 14.9x24 tires, auto reverse.

6" 160 PSI Rated Gasketed PVC pipe in 20' pieces: (140) total pieces available, \$60 per piece.



11 tower Pierce center pivot. 11.24 tires Nelson rotators on drops. Auto reverse 1413 total pipe length.

1/4 mile Western Wheel Line, \$4000. Baker City, OR. 541-519-5125

Pivots: Good, various lengths, all brands & late models. No rust. Plus buried wire.



Pump: Item #DO7178K. 100 HP, 480/ 277v, 3ph 1500 gpm. 150"Lx-55"Wx45"H. USA made, used for irrigation/ small hydrant network.

PACIFIC SOUTHWEST IRRIGATION advertisement for irrigation equipment. Design of Effluent Handling Systems - Gates, Valves & Aerators.

890 Packing/ Processing Eq.

890 Packing/ Processing Eq. 890 Packing/ Processing Eq.

MARKET SUPPLY & DISTRIBUTION, INC. advertisement for packaging solutions. World Class Berry & Produce Packaging Solutions.

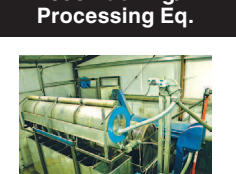
899 Heavy & Indust. Eq.

899 Heavy & Indust. Eq. 899 Heavy & Indust. Eq.

887 Irrigation Equip.

1400' of 6" Aluminum mainline. 1000' of 5" Aluminum Mainline. Terrebonne, OR. 541-419-8370

890 Packing/ Processing Eq.



Hazelnut Shelling System (previously Hazelnut Hill), sealed input, inshell sizer for cracker, two-stage cracker, mechanical shell separator.



3 phase root washer: 3'x6' drum. Rust-proof aluminum. Excellent condition, \$1,250.



Hazelnut Sizer. Steel frame and drum. 14mm and 16mm hole size. 3 phase motor.



PUMP & TANK: Viking 4125 Rotary 2" pump with 7.5 HP 230/460v 3ph motor, Viking helical gear reduction drive.

St Regis 2R positive displacement pump with Sterling 1/2 hp variable speed motor & gear reducer.

1997 Bobcat T180, 2200 hours, good condition, \$24,000. Gaston, OR. 503-789-3726

Cat 980B Loader: 6 yard bucket with new bottom, runs good, \$12,500.



CAT D5C LGP Dozer, 1360 hours. NICE \$29,500. Tualatin, OR. Call or text 503-260-0303

890 Packing/ Processing Eq.

Meat Cutter Retiring after 50 years. Butcher shop equipment only. Cutting tables, meat saws, grinder, etc. 1953 NAA Ford Tractor, \$5000.

896 Forklifts

Nissan 50, new drive tires, 2 sets of forks, \$5500. Gaston, OR. 503-662-5401



1995 Taylor: 20,000 lb lift, tall mast, side shift, hydraulic fork positioners, Cummins 5.9 diesel, 3 speed power shift transmission.

Hyster H50XM and others: I have a good supply of 4-10,000 pound machines for sale . 10 total. McMinnville, OR.

PLACE LINE CLASSIFIED ADS TOLL-FREE FROM ANYWHERE! 1-800-882-6789

Used Lift Trucks advertisement. Also New & Used Parts All sizes, makes & prices. LIFT TRUCK SERVICE 888-890-1450

899 Heavy & Indust. Eq.

899 Heavy & Indust. Eq. 899 Heavy & Indust. Eq.

REPLACEMENT DECAL SETS Construction, Forestry & Ag Equipment. Fast, Knowledgeable, Reliable Service.



2012 Bobcat T180, 2200 hours, good condition, \$24,000. Gaston, OR. 503-789-3726



1997 Komatsu PC400LC-6LC, 7,400 hours, thumb hydraulic link, 85% undercarriage. Nice machine, used for demo, \$59,000.

Cat 980B Loader: 6 yard bucket with new bottom, runs good, \$12,500.



CAT D5C LGP Dozer, 1360 hours. NICE \$29,500. Tualatin, OR. Call or text 503-260-0303

899 Heavy & Indust. Eq.

(2) Moxy 30 ton off highway dump trucks, \$80,000 each. D9H 3 shank ripper, \$55,000. D6R with cab, \$62,500. (2) TS-14 Terex scrapers, \$25,000/ both.

Caterpillar 4 cyl engine with radiator, model D330C, runs good, \$4500. Dufur, OR. 541-467-2601



2008 CAT IT14G: quick attach with bucket and forks. New fly wheel, starter, and radiator. 8678 hours, \$45,000.

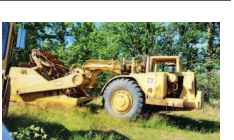
1999 CASE 580L: 4x4 loader backhoe, Extendaohoe, 4 in 1 bucket, enclosed cab, \$27,500.



Hi Ranger 6EHV-65PBL, 70' Foot Bucket Truck, 2-man Bucket, 4 Hydraulic Outriggers, Rear Mounted on 1985 International S1954 Flatbed Truck.



D-6 H U-dozer with tilt and ripper, near new engine and hydraulic pump, \$86,500.



CAT 623-B: Self-loading scraper, good condition, Reduced \$33,500. Salem, OR. 503-362-3055



Morbark 08 Hurricane 18, Cat C7 250HP T3, tandem axles, 3 stabilizers, winch, less than 50 total hours, \$64,995.

CASE INDUSTRIAL PARTS We sell genuine, after market, and used CASE parts at discount prices nationwide.

DON PEILA TRACTOR REPAIR PARTS specializing in JOHN DEERE INDUSTRIAL EQUIPMENT

Good Used, Reconditioned & After-Market Parts Peilatractorrepair-parts.com

SATELLITE PARTS LOCATING SYSTEM

GK MACHINE INC advertisement for FUEL TANKS WITH SECONDARY CONTAINMENT. NOW UL142 LISTED! Affordable, turn-key above ground steel fuel storage tanks from 250 up to 18,000 gallons.

Bobcat advertisement featuring various models and prices. \$51,999 for 2017 E35 33HP excavator, \$24,500 for 2005 430 excavator, \$42,999 for 2016 T390 loader, and \$37,999 for 2016 S595 skid steer.