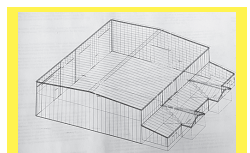


805 Farm Buildings



BRAND NEW 100'x100'
Never Constructed Steel Building, great custom specs, engineered for bridge crane. Same building spec'd today: \$200,000+. Buy now: \$120,000. La Grande, OR. 208-791-9959

Martin Cisneros Pole Buildings & Concrete: Shops, garages, arenas, hay storage. Agriculture/ Residential, additions and repairs. Serving Oregon CCB# 135771. Licensed, bonded and insured. Excellent references. 503-375-9273 or 503-507-2847

807 Fuel, Heating & Firewood

Dried Fir Wood: \$175/cord. Dallas, OR. 503-930-5537

821 Christmas Trees

WANTED
Christmas Trees Wanted: Noble Fir, Nordmann, Grand Fir, Natural Noble Fir for boughs and Christmas Trees. CASH PAID. Will maintain and harvest. Portland, OR. 503-975-8733

BEST SELLERS...
"...Sold everything in the herd but a couple of old bulls."
Kester Ranch, Cottage Grove, OR
Call 1-800-882-6789 and sell too!

805 Farm Buildings

821 Christmas Trees

Attention Christmas Tree Growers: Complete management services available. Planting, cultivation and harvesting. Also, sales available. High quality work, Licensed and bonded, backed by 50 years experience, BTN of Salem, OR. 503-881-8610

500 #2 Nobles: Also Large Nobles 10' to 16'. Gresham, OR. 503-663-5264



Wanted: CASH PAID Christmas Trees. Douglas, Noble, Nordmann, 5' to 8'. Grade and Field deals. Pacific Northwest. 760-909-7113

Cash Paid. Top Prices. Christmas Tree Fields. Any Condition. Oregon, Washington. 503-873-6774, 503-551-5809

SAJE Christmas Tree Conveyor: all hydraulic, self driven, 30', \$3500. Washougal, WA. (360)837-3591

805 Farm Buildings

821 Christmas Trees

Greenbriar Ag Management Offering Professional Christmas Tree Services: Experienced, quality work, planting through harvesting, stump grinding. Sales, brokering, licensed & bonded contractor. Farm & Forest Labor License #10628 Stayton, OR. 503-932-2323 greenagmngt@wvi.com



Natural Noble firs. 3000+ 5-15 foot healthy and full color tops of larger trees. Each tree can be harvested to required size, \$10-\$25 each plus harvest cost. Wholesale only. Springfield, OR. 541-510-4131

822 Nursey Stock - Plants

821 Christmas Trees

(2) Howie Christmas Tree Balers, good condition, \$1000, \$1500. Dallas, OR. 503-930-5537

(500) 6'7" and 7'8" Douglas Firs, #1, \$18 CBL or \$16 you CBL. Washougal, WA. (360)837-3591

Wanted: 4000 Noble Trees, 6' to 7', \$32 CBL. 7' to 8', \$38 CBL. Silverton, OR. 503-873-6774

Buyer - Looking for 8' to 13' NOBLE, GRAND, NORDMAN (some Doug). Can fill with other smaller varieties and sizes if needed. Have own trucking. Text or call 858-344-0979

Howie Balers: Model 210, \$800; 400RC, \$3800. **Shaker:** Model 150A, \$1500. **Preset 36' Elevator,** \$400. Amboy, WA. 360-247-5705. After 5PM.

Approximately 30 Acres of Overgrown Noble Firs: looking for bough buyers in Salem, OR area. Possible Long Term Lease. Price negotiable. 503-580-1483

822 Nursey Stock - Plants

822 Nursey Stock - Plants

Hedge & Border Varieties: Leyland Cypress, Green Giant, Arborvitae, and Laurels. Excellent for road and property barriers. Severson Farms, Springfield, OR. Call 541-228-6085

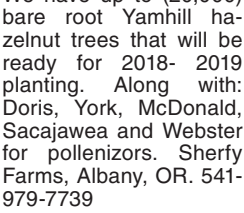


Hazelnut Trees: McDonald, Jefferson, Yamhill, Wepster, York, Eta, Theta, Felix. Dayton, OR. 503-864-4422

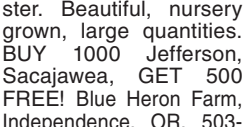
Bare Root Hazelnut Trees: up to 30,000 bare root Yamhill trees. Available for 2018-2019 planting, \$6.25/ tree. St-Paul, OR. Call Dustin 503-991-6728



Bare Root Hazelnut Trees: We have up to (20,000) bare root Yamhill hazelnut trees that will be ready for 2018- 2019 planting. Along with: Doris, York, McDonald, Sacajawea and Webster for pollinators. Sherfy Farms, Albany, OR. 541-979-7739



Jefferson, Yamhill, Sacajawea and Wepster. Beautiful, nursery grown, large quantities. BUY 1000 Jefferson, Sacajawea, GET 500 FREE! Blue Heron Farm, Independence, OR. 503-838-3779



Jefferson Hazelnut Trees: We are currently taking orders for Jefferson hazelnut starts. They will be ready this December-January we have Eta and Theta pollinators also. Trees will be \$5 each for Jefferson and \$6 each for the pollinators. Lebanon, OR. Call or text Tim 541-409-6751

"...Sold both bulls second week. Thanks!"
Tiara Farm
Port Townsend, Wash.
You sell too at 1-800-882-6789.

824 Seed

ALFALFA SEED \$2.70/LB.
Alfalfa Seed, \$2.70/ lb., Dormancy 4. Tests well with great persistence and winter hardiness. Inoculated in 50 lb. bags. Kuna, ID. Contact Dave 208-890-1066 or Jessica 208-761-2720 or email seed@davereynoldsfarms.com

Quality VNS Alfalfa Seed: \$2.00/ lb. Kreggers, Touchet, WA. Chris 509-394-2400

Organic Crimson Clover Seed: germ/purity test available. Canby, OR. 503-209-0685. jbrnec@canby.com

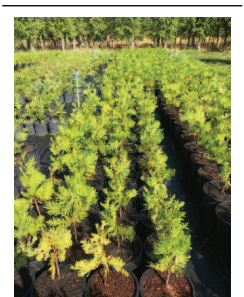
824 Seed

822 Nursey Stock - Plants

Blueberry (20 varieties), Raspberry, Marion, Boysen, Currant, Grape, Kiwi, Strawberry Plants. Canby, OR. 503-730-4788
www.canby.com/morningshade

Blueberries, Duke: 3 year old plants, \$2.50 each. Albany, OR. 503-871-9114

EMERALD GREEN ARBORVITAE: rooted cuttings and 2-1/4", liners available. Forest Grove, OR. Call 503-359-7540



4 year old Incent Cedar trees: very healthy with good root systems. 10 tree minimum; no exceptions. 500 total available, \$25. Olympia, WA. 360-866-0457

Hazelnut Seedlings NURSERY GROWN Potted - \$4.50 ea.
503-799-3842
Paul
37-4-3/106

826 Organic

Organic Oat Hay: CERTIFIED, approx 250 ton, 3x4 bales, \$150/ton. Delivery available. Eastern OR. 541-823-2769

Organic Alfalfa: CERTIFIED, 1st, 3rd cutting, 3x4 bales, \$190/ton. Delivery available. Eastern OR. 541-823-2769

Approx 700 tons **organic wheat hay**, \$165/ ton. Approx 450 tons **organic barley hay**, \$165/ ton. All hay in 3x4 bales. Klamath Falls, OR. 541-892-2706

824 Seed

ALFALFA SEED \$2.70/LB.
Alfalfa Seed, \$2.70/ lb., Dormancy 4. Tests well with great persistence and winter hardiness. Inoculated in 50 lb. bags. Kuna, ID. Contact Dave 208-890-1066 or Jessica 208-761-2720 or email seed@davereynoldsfarms.com

Quality VNS Alfalfa Seed: \$2.00/ lb. Kreggers, Touchet, WA. Chris 509-394-2400

Organic Crimson Clover Seed: germ/purity test available. Canby, OR. 503-209-0685. jbrnec@canby.com

ALFALFA SEED \$2.70/LB.
Alfalfa Seed, \$2.70/ lb., Dormancy 4. Tests well with great persistence and winter hardiness. Inoculated in 50 lb. bags. Kuna, ID. Contact Dave 208-890-1066 or Jessica 208-761-2720 or email seed@davereynoldsfarms.com

824 Seed

824 Seed

Roslyn soft white winter wheat, cleaned and treated. Forest Grove, OR. 503-310-2524

Pasture Seed \$1.20/ lb. Lawn Seed \$1.20/ ton. Wheat Straw \$120/ ton. Grass Hay \$180/ ton. Wheat \$6/ bag. Rickreall, OR. 503-623-6922

Foundation Fawn Fescue: planting seed stock Halsey, OR. 541-974-4502, 541-974-5654

Common vetch, cereal rye, cover crop and native seed. Albany, OR. Call/ text: 541-905-2111

825 Fertilizer

CHICKEN LITTER/ MANURE: OR./ WA. Delivery available. Organic litter also available. Call/ text 360-520-6782 or email: bowtech52@gmail.com



Chicken Compost
Processed Chicken Manure Compost. Ground processed and screened for easy handling. We load your trucks fast or deliver with ours. Truck scale available. We deliver almost anywhere in Washington State. Mossyrock, WA. 360-880-2128

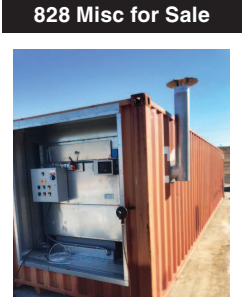
826 Organic

Organic Oat Hay: CERTIFIED, approx 250 ton, 3x4 bales, \$150/ton. Delivery available. Eastern OR. 541-823-2769

Organic Alfalfa: CERTIFIED, 1st, 3rd cutting, 3x4 bales, \$190/ton. Delivery available. Eastern OR. 541-823-2769

Approx 700 tons **organic wheat hay**, \$165/ ton. Approx 450 tons **organic barley hay**, \$165/ ton. All hay in 3x4 bales. Klamath Falls, OR. 541-892-2706

828 Misc for Sale



Hemp/ tobacco dryer: portable, 40' container, 3 phase power needed, propane heater system. Delivery available, \$40,000. Rufus, OR. 541-980-5979

824 Seed

JUHR CONSTRUCTION CORP.
503-658-2306
PRE-ENGINEERED ALL STEEL BUILDINGS

- Agricultural
- Recreational
- Industrial

Visit us on the web at www.juhrconstruction.com
FAX 503-658-0599 • BB#88367
Building in Oregon Since 1946 39-3/103

Our readers know the best dirt!

CapitalAg Weekly
The West's Ag Weekly
1-800-882-6789
CapitalPress.com

Are you tired of:

- Uncovering and recovering stacks to load trucks?
- Bales lost due to leaking covers?

Superior Building Manufacturing Inc. can help ease your mind by:

- Providing a quick payback of 5 to 7 years compared to tarping
- Reducing the loss of bottom and top bales due to water damage
- Reduction of labor by not having to uncover and recover stacks
- Knowing your bales will be in the same condition you originally stored them

Superior Building Manufacturing Inc. offers Engineered buildings in many different sizes. Engineered sizes available are:

- 41', 51', 63', 72', 80' wide buildings by length of your choice.
- Full professional construction or easy to construct yourself
- All buildings are designed and engineered to meet your local wind and snow loading in your area

36-4-2/104

Superior BUILDING MFG. INC.
2284 Rd. 3 NE Moses Lake, WA 98837
Phone: 509.764.8543
Fax: 509.764.8545
www.superiorbuildingmfg.com

KAISER STEEL BUILDINGS, LLC

Factory Direct Metal Building Kits

Since 1963 • F.O.B. our plant, Eugene, OR

KAISER STEEL BUILDINGS, LLC
For information call or write
(541) 688-0141
30025 Kaiser Ave., Eugene, OR 97402
WWW.KSBUILDINGSLLC.COM

EOW-Alt. 39-3/100

Blue Ribbon

The Early Season Just Got More Flavorful.

FALL CREEK FARM & NURSERY, INC.
1.800.538.3001 | www.fallcreeknursery.com
39-3/100

We deliver your message to the West's ag audience.

- Newspaper
- E-newsletters
- Mobile
- Websites
- Flyers
- Custom Publications

Call today and see how we can help your business grow.

CapitalAg Weekly
The West's Ag Weekly
800-882-6789
CapitalPress.com

CERTIFIED SEED WHEAT

IOKA MARKETING

SY ASSURE BOBTAIL ROSALYN YAMHILL

TREATMENT AVAILABLE

Winter Barley • Winter Triticale • Winter Oats • Fava Beans
Austrian Winter Peas • Pasture Mixes • Cover Crops

CALL FOR PRICING
503-873-6498
Rob@IokaMarketing.com
Silverton, OR

38-4-4/106

823 Bees

Print and online Ag News for ranchers, farmers, vintners, nursery people and more!

ANYTIME ANYWHERE

CapitalAg Weekly
The West's Ag Weekly
1-800-882-6789
CapitalPress.com

823 Bees

823 Bees

823 Bees

823 Bees

823 Bees

823 Bees

823 Bees

823 Bees

823 Bees

823 Bees

823 Bees

823 Bees

PAINT THE PAPER PINK!

October is **National Breast Cancer Awareness Month**, and as friends of Capital Press, we're asking you to help us "PAINT THE PAPER PINK."

You can contribute by upgrading your line ads with one of the following three:

- Pink Ribbon \$3.50/week**
- HYPE Inspirational Banner \$6/week**
- Pink Background \$5.50/week**

We also encourage our class display advertisers to incorporate PINK into their October ads.

One out of eight women will be diagnosed with breast cancer in their lifetime! Preventative screening and early detection is of the utmost importance. Be part of the cure. Call today.

Lori Fall or Rebecca Beach • 1-800-882-6789

Capital Press will donate 25% of the proceeds to:

MAKING STRIDES Against Breast Cancer
American Cancer Society

39-5-2/HOU