

890 Packing/ Processing Eq.



St Regis 2R positive displacement pump with Sterling 1/2 hp variable speed motor & gear reducer, 220/440 volt, forward and reverse controls. Some parts missing, \$200. Eugene, OR. Contact Julie Crooks 541-689-0913

899 Heavy & Indust. Eq.

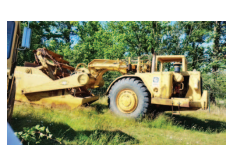
CAT 924G loader, quick-coupler bucket, 18,000 hours, \$40,000 OBO. Terrebonne, OR. 541-699-2242

Cat 988 wheel loader, rock bucket, 10,000 hours, \$15,000. **Galion 118C motor grader**, 10' blade, 3000 hours, \$9,000. Albany, OR. 541-928-8868



Meat Cutter Retiring after 50 years. Complete shop for sale. Cutting tables, meat saws, grinder, etc. **1953 NAA Ford Tractor**, \$5000. Oregon City, OR. (503)631-7384

D-6 H U-dozer with tilt and ripper, near new engine and hydraulic pump, \$86,500. Salem, OR. 503-362-3055



896 Forklifts



2003 S80XM-BCS 8000 pound box car special: it has it all, free lift, side shift, 2547 hours. In excellent shape, \$9,987. McMinnville, OR. 503-550-7625

CAT 623-B: Self-loading scraper, good condition. Reduced \$33,500. Salem, OR. 503-362-3055

REPLACEMENT DECAL SETS

Construction, Forestry & Ag Equipment. Fast, Knowledgeable, Reliable Service. 215-536-5339 email: info@CustomServicesCompany.com

Thousands of sets, Old & New, in our digital inventory. www.QuipCal.com



2012 Bobcat T180, 2200 hours, good condition, \$24,000. Gaston, OR. 503-789-3726

Nissan 50, new drive tires, 2 sets of forks, \$5500. Gaston, OR. 503-662-5401



1995 Taylor: 20,000 lb lift, tall mast, side shift, hydraulic fork positioners, Cummins 5.9 diesel, 3 speed power shift transmission. Would make a great hay squeeze, \$16,500. Creswell, OR. 541-954-4080

1997 Komatsu PC400LC-6LC, 7,400 hours, thumb hydraulic link, 85% undercarriage. Nice machine, used for demo, \$59,000. Gaston, OR. 503-789-3726

Used Lift Trucks

Also New & Used Parts All sizes, makes & prices
LIFT TRUCK SERVICE
888-890-1450
forkliftsales.com
Ellensburg, WA

Cat 980B Loader: 6 yard bucket with new bottom, runs good, \$12,500. Roseburg, OR. 541-784-8680

(2) **Moxy 30 ton** off highway dump trucks, \$80,000 each. **D9H 3 shank ripper**, \$55,000. **D6R** with cab, \$62,500. (2) **TS-14 Terex scrapers**, \$25,000/ both. Tacoma, WA. 206-947-0903



CASE INDUSTRIAL PARTS

We sell genuine, after market, and used CASE parts at discount prices nationwide. Call For Free Catalog.

CAT D5C LGP Dozer, 1360 hours. NICE \$29,500. Tualatin, OR. Call or text 503-260-0303

There Are Always Great Deals In Capital Press Classifieds. Call Now And Add Yours! 1-800-882-6789

902 Farm Equip. Parts

902 Farm Equip. Parts

ASSOCIATED TRACTOR SERVICE INC.
NEW • USED • REBUILT PARTS
PARTS • SERVICE • EQUIPMENT
PARTS ★ SERVICE ★ EQUIPMENT
• Used Parts National Locator Services
• BEGE Hydraulic Pumps & Parts
Satisfaction Guaranteed Since 1954
800-735-1301 • 209-466-3003
1323 W. Charter Way, Stockton, CA 95206-1110

899 Heavy & Indust. Eq.

899 Heavy & Indust. Eq.

BIG TRACTOR PARTS, INC.
~ GEARED FOR THE FUTURE ~
STEIGER TRACTOR SPECIALIST
1. We are your source for new & used Steiger drivetrain parts Series 1 - 9300 Series.
2. We rebuild Spicer manual transmissions, Fugi power shift transmissions, dropboxes & axle with ONE YEAR WARRANTY!
3. We now rebuild computer control boxes for Steiger tractors 1982-1999.
800-982-1769
www.bigtractorparts.com

NEW, USED, AND REMAN PARTS
TOLL FREE: 1-877-928-1646
FARMLAND • 32427 OLD HWY 34, TANGENT, OR 97389
Reman Engines for Case/IH, John Deere, and Ford
Seats w/Air Suspension \$1,025
Combine Parts
JD 4010, 4020 Clutch Kits \$715
A/C Components
Farmland Tractor Supply
Parts @Farmlandtractor.com

COMBINE HEAVEN
R.I.P.
Reasonable Implement Pricing
See Our Combine Dance on YouTube
RECENT ARRIVALS
(3) IH 2188 • IH 1688 4x4 JD 8820 II
JD 9610 • (2) JD 9600 HILLSIDES
JD CTS NH
9660 STS TR 96
9610 TR 95
9600 TR 85
9500 TR 75
9400 TR 70
8820 IH
8820 II 2188
7720 1688
7700 1680
6622 1666
6620 1660
6602 1480
6600 1460
6600SH 1440
4400 915
105 815
95EB 715
95 Late 715
95 Hillside 403
LOTS OF TRACTORS AND IMPLEMENTS TOO!
Nyssa Tractor & Implement
Celebrating 28 years in the agricultural machinery business.
Our yard has 4.5 miles of road, with machinery on both sides.
FREE TOURS GIVEN DAILY.
Call Toll Free: (888) 372-4020
www.nyssatractor.com
sales@nyssatractor.com
Nyssa, OR

899 Heavy & Indust. Eq.

899 Heavy & Indust. Eq.

899 Heavy & Indust. Eq.

899 Heavy & Indust. Eq.

Specializing in Truck and Livestock Scales
Established in 1959, Scales NW offers a wide range of equipment, from precision lab balances to high capacity rail scales, as well as certified scale service and installation.
Scales NW is proud to serve:
California
Idaho
Montana
Nevada
Oregon
Utah
Washington
Contact Steve Orr for more information today!
Email: steveorr@scalesnw.com
Phone: (503) 510-3540
www.scalesnw.com • (800) 451-0187

902 Farm Equip. Parts

Starters, alternators, and generators. Call 503-364-3650 or visit Walz's Rebuilt - 348 Market St. NE., Salem, OR.

905 Antique Farm Eq. & Parts

Oliver White, never used, new backhoe, rear axle and wheels, new PTO, attached hydraulic unit, new front axle and loader frame, \$1650. Prineville, OR. 541-410-3425

John Deere 45 combine, good running condition, barn stored, make offer. Fort Rock, OR. 541-576-2237

905 Antique Farm Eq. & Parts



1960 John Deere 730 Standard Tractor, 2 cylinder, diesel, electric start, 18" front tires, 30" rear, 2600 original hours, SN# 732-49XX, good condition, nice, older restoration, \$25,000 OBO. Kimberly, ID. (208)423-4247



Antique Water Pumping Windmills: The last of the Reining Windmills. from Iowa farms, completely rebuilt and ready to pump or show. Mulino, OR. 503-348-2378



1946 Allis Chalmers WF: rebuilt engine, new clutch, new tires, good tin, original paint, \$3500 OBO. Willocks, CA. 530-934-7875

907 Nursery Equip. & Supplies



Soil Cement Mixer: free-standing cement mixer used to mix potting soil, \$4500 OBO. Salem, OR. 503-851-8855

FRESH SAWDUST: Consistently fair pricing. Forest-Grove, OR. For pricing call 503-849-0216

USED NURSERY CONTAINERS: Used, but reusable nursery containers. All sizes. Inventory changes daily. Call for current availability and prices. Sawyer Farms, Scio OR. 503-769-3417, juddsfarm@wvi.com (also wanted: used containers)

2014 Allen 8803 Rake: Serial #13001. Field Ready, Electronic Controls, Under 100 hours, like new, ready to go to work. \$18,000 OBO. Greenville, CA. 530-592-9798

908 Garden, Turf, Yard Equip.

Used TURF MOWERS & TORO CUTTING UNITS: John Deere, Toro & Jacobson tri-plex mowers. Priced to sell. Call for details. Haines, OR. 541-910-0730

911 Hay Equip.

•Monster big bale feeders for single or double bales •Heavy duty gates •Continuous fence panels •Oil field pipe •Posts cut to order up to 7-5/8 od jonspipeandsupply.com Orland, CA. 530-949-2285



John Deere 4890 Swather: 2001, 890 16 foot header with reverser, steel roller conditioner, 1052 hours. Superb, nearly new condition inside and out, \$38,000. Kennewick, WA. Text for photos 509-948-2564.

New Holland 1030 Stacker: pull type, 2 tie and 3 tie, fully reconditioned and field ready. Probably the nicest one available, \$10,500. Kennewick, WA. Text for photos 509-948-2564

1065 New Holland Self Propelled Bale Wagon: straight machine but needs some mechanical work, comes with 2 extra motors, transmissions and motor rebuild kit, \$5000 OBO. Delivery Available. Angels-Camp, CA. (209)684-4885



New Holland BC 5080: 16 x 18, 2 tie baler, \$22,000 OBO. Valley, WA. 509-993-4128



580 New Holland: 16 x 18, 2 tie baler, \$20,000 OBO Valley, WA. 509-993-4128

911 Hay Equip.

2013 Road Runner hay squeeze, 3 stage mast. 405-762-2815 www.customhaysqueeze.com

New Holland H9880 bale wagon, like new, 170 hours, \$140,000. Terrebonne, OR. 541-699-2242



John Deere 457: round baler, 4x5, twine wrap, \$15,000 OBO. Valley, WA. 509-993-4128



2014 New Holland 216 Rakes: \$22,000 OBO. Valley, WA. 509-993-4128

Twinstar Rake G2-7: Great Working Condition, Field Ready, \$20,000 OBO. Jefferson, OR. 503-871-6340

2012 Massey Ferguson 1841 Square Baler, 16x18, low bale hours, always inside, like new condition, \$23,950. Tri-Cities, WA. 509-770-7706



Hyster H155XL: Perkins Diesel, New Higinbotham Hay Squeeze, \$34,500. Prineville, OR. 503-209-5852

CAT 950 Loader: quick coupler front end, Manteca Hay Squeeze, Miller Big Bale Fork, 2 1/2 yard bucket, \$28,000. Boardman, OR. (541)571-6601



2014 Allen 8803 Rake: Serial #13001. Field Ready, Electronic Controls, Under 100 hours, like new, ready to go to work. \$18,000 OBO. Greenville, CA. 530-592-9798

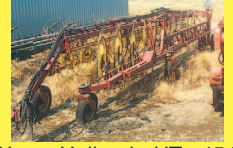
CAT V180 Hay Squeeze: Sunny D clamp, Ford V8, runs good, \$18,000. Silverlake, OR. 541-576-2552



Stack Retriever for Sale! 2001 FL 80 Freightliner, C7 CAT engine, 2006 Hauser Built 9615 retriever bed, Allison automatic transmission, 200" wheel base, \$35,000. Acampo, CA. Contact Steve 209-327-3880

New And Used Parts: for all models New Holland bale wagons. **Largest Inventory in North America.** Sod Busters Sales, Polson, MT. 877-735-2108 or 406-883-2118

Bale Wagon: 8'x16', heavy duty, \$3900. Buxton, OR. 503-324-3305



New Holland HT 154 high capacity wheel rake. Light kit and poly tine support kit included. 20 wheels. Great for bigger fields of annual or clover, etc. Salem, OR. 503-910-4010



2003 Challenger LB33 3X3 baler, bale skis. Knotter fan, 39050 bales. Excellent condition, \$19,500. Corvallis, OR. 541-760-8809



Peterbilt 385 Hay Stack Retriever: C-10 Caterpillar, 380HP, 10 speed Transmission, New Holland Retriever bed with updated sliding head-rack & heavy duty arms. \$25,000. El Nido, CA. 209-777-0075

BALE WAGONS: Rebuilt New Holland 1085 bale wagon, sharp, \$57,500. Rebuilt 1988 New Holland NH1068 bale wagon, very sharp, \$47,500. Rebuilt New Holland 1079 bale wagon, \$70,000. New Holland 1075 diesel unit, \$35,000. Sod Buster Sales. Polson, MT. 406-883-2118

911 Hay Equip.

(2) New Holland bale wagons: 1065, \$7000 and 1048 \$5000. New Holland 1112 diesel swather, 14' header \$5000. Adel, OR. 541-219-0900

New Holland 1075 Bale Wagon: runs good, 460 gas engine, \$14,000 OBO. Caldwell, ID. 208-250-6409



Used NEW HOLLAND baler BC5070: stk#15749. Was \$16,280, NOW \$15,322. LaDuke & Fogle Equipment, Colville, WA. 509-684-2575 www.ladukeandfogle.com



Used NEW HOLLAND square baler BC5060: stk# 15909. Was \$17,252, NOW \$16,237. LaDuke & Fogle Equipment, Colville, WA. 509-684-2575 www.ladukeandfogle.com



NEW HOLLAND 575 square baler: stk #15933. Was \$8,375, Now \$7,500. LaDuke & Fogle Equipment, Colville, WA. 509-684-2575 www.ladukeandfogle.com

Freeman 5300 Big Bale Wagon, \$65,000. New Holland BW28 Bale Wagon, 3 string harrow bed, \$88,000. Silver Lake, OR. 541-480-3371

New Holland H7220 discbine, \$16,000. New Holland 575 baler, \$10,000. New Holland 1037 bale wagon, \$7500. (2) New Holland 258 rakes with hitch, \$5500. Fella TH790 tedder, \$8000. John Deere hay fluffer, \$200. Forest Grove, OR. 503-713-3522

Large Supply of Rebuilt New Holland Bale Wagons: Also buying New Holland bale wagons. Sod Busters Sales, Polson, MT. 406-883-2118

#1 Balewagons: Buy, Sell, New Holland 2&3 wide self-propelled, pull-type models, parts, tires, manuals. Caldwell, ID. 208-880-2889 www.balewagon.com

RCO Baits
Gophers • Squirrels
Voles-Moles
Dealer Locator
1-800-214-2248
Harrisburg, OR 38-1100

914 Potato/Sugar Beet Equip.

2002 Grimme Potato Harvester. Good Condition. New Chain, \$25,000. North Powder, OR. Justin 541-910-2967, Sheldon 541-910-0915

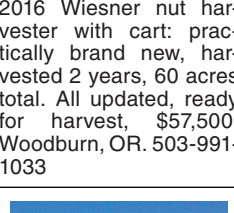
917 Orchard/Vineyard Equip.

Custom Hazelnut harvesting, Monchiero harvester. Any size of orchards can also take care of hauling. Willamette Valley, OR. Jimmy Lee 503-510-7779

824 Weiss McNair harvester, \$6000 as is, \$8000 field ready. Silverton, OR. 503-932-0766



2016 Wiesner nut harvester with cart: practically brand new, harvested 2 years, 60 acres total. All updated, ready for harvest, \$57,500. Woodburn, OR. 503-991-1033



1971 Upright grape harvester and support equipment, 2 gondolas, 2 truck trailers with 5 tanks, \$14,000 OBO. Grandview, WA. 509-832-4174



Hazelnut Sweeper: 8' tine bar head, Ramacher. Good shape, ready to go, \$9000. Salem, OR. 503-932-7071