

805 Farm Buildings

BRAND NEW 100'x100' Never Constructed Steel Building, great custom specs, engineered for bridge crane. Same building spec'd today: \$200,000+. Buy now: \$120,000. La Grande, OR. 208-791-9959

Capital Press CLASSIFIEDS
1-800-882-6789
CapitalPress.com

805 Farm Buildings

Martin Cisneros Pole Buildings & Concrete: Shops, garages, arenas, hay storage. Agriculture/ Residential, additions and repairs. Serving Oregon CCB# 135771. Licensed, bonded and insured. Excellent references. 503-375-9273 or 503-507-2847

THIS AD SPACE could be yours!
1-800-882-6789
or FAX 503-370-4383
CapitalPress.com

805 Farm Buildings

Barns/ Shops 725+ Completed Projects and References. 48 years. Scheduling for October. Al Fromherz Construction. Visit Facebook or call 503-931-9585 Dallas, OR. CCB#44178

821 Christmas Trees

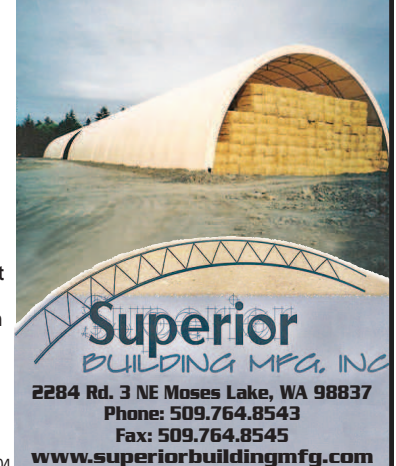
Attention Christmas Tree Growers: Complete management services available. Planting, cultivation and harvesting. Also, sales available. High quality work, Licensed and bonded, backed by 50 years experience, BTN of Salem, OR. 503-881-8610

805 Farm Buildings

Are you tired of:
• **Uncovering and recovering stacks to load trucks?**
• **Bales lost due to leaking covers?**

Superior Building Manufacturing Inc. can help ease your mind by:
• Providing a quick payback of 5 to 7 years compared to tarping
• Reducing the loss of bottom and top bales due to water damage
• Reduction of labor by not having to uncover and recover stacks
• Knowing your bales will be in the same condition you originally stored them

Superior Building Manufacturing Inc. offers Engineered buildings in many different sizes. Engineered sizes available are:
• 41', 51', 63', 72', 80' wide buildings by length of your choice.
• Full professional construction or easy to construct yourself
• All buildings are designed and engineered to meet your local wind and snow loading in your area



WE COVER A LOT OF GROUND!

Let us deliver your message to the West's Ag Audience.

- Newspaper
- E-newsletters
- Mobile
- Websites
- Flyers
- Custom Publications

Call us today to see how we can help your business grow.

Capital Press
The West's Ag Weekly

800-882-6789
CapitalPress.com

821 Christmas Trees

Buyer - Looking for 2 truckloads of large 9'-15' **NOBLE, GRAND and NORDMAN.** No problem picking up some other smaller types to sweeten the deal. Have own trucking. 858-344-0979

Wanted: Overgrown Christmas Tree Fields for Noble Fir Boughs. Top dollar paid. Honest. 503-348-5902

BUYING CHRISTMAS TREES

Hello, We are a local family looking to buy your Christmas Trees. Need approx 3000 Noble and Nordmann Fir, and we can pay cash too. Thank you. 503-880-5820



WANTED: Do you or anyone you know have overgrown noble fir trees, any size, unsharred? Seeking noble fir boughs for wreath production. Pay TOP \$\$\$! We harvest 100%. References available. Thanks! Hillsboro, OR. 503-348-2206

WANTED

Christmas Trees Wanted: Noble Fir, Nordmann, Grand Fir, Natural Noble Fir for boughs and Christmas Tress. CASH PAID. Will maintain and harvest. Portland, OR. 503-975-8733

Greenbriar Ag Management Offering Professional Christmas Tree Services: Experienced, quality work, planting through harvesting, stump grinding. Sales, brokering, licensed & bonded contractor. Farm & Forest Labor License #10628 Stayton, OR. 503-932-2323 greenagmngt@wvi.com
Wanted: 3000 Noble, 6'-7', 7'-8', 3000 Nordmann, 6'-7', 7'-8', 500 Natural Noble up to 10', Cash paid. Will maintain and harvest. Vancouver WA. 360-513-7822

Cash Paid. Top Prices. Christmas Tree Fields. Any Condition. Oregon, Washington. 503-873-6774, 503-551-5809

822 Nursey Stock - Plants

Hazelnut Seedlings NURSERY GROWN Potted - \$4.50 ea. 503-799-3842 Paul

Blueberry Plants

OREGON BLUEBERRY FARMS AND NURSERY

Northern Highbush Southern Highbush Rabbiteye

Call or visit us online today.
(503) 873-1200
www.oreblueberry.com

Clockwork

Make This Your First Choice for a One Pick Blueberry Variety.

FALL CREEK FARM & NURSERY, INC.
1.800.538.3001 | www.fallcreeknursery.com

824 Seed

CERTIFIED SEED WHEAT

SY ASSURE BOBTAIL ROSALYN YAMHILL

TREATMENT AVAILABLE

Winter Barley • Winter Triticale • Winter Oats • Fava Beans
Austrian Winter Peas • Pasture Mixes • Cover Crops

CALL FOR PRICING
503-873-6498
Rob@lokaMarketing.com
Silverton, OR

822 Nursey Stock - Plants

Blueberry farm downsizing: 6 varieties, over 10,000 mature plants. Available after the 2018 season. 100 plant minimum. You dig, you haul. Corvallis, OR. 541-745-2012

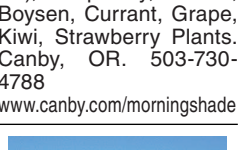


Bare Root Hazelnut Trees: We have up to (20,000) bare root Yamhill hazelnut trees that will be ready for 2018- 2019 planting. Along with: Doris, York, McDonald, Sacajawea and Webster for pollinizers. Sherry Farms, Albany, OR. 541-979-7739

EMERALD GREEN ARBORVITAE: rooted cuttings and 2-1/4", liners available. Forest Grove, OR. Call 503-359-7540

Hedge & Border Varieties: Leyland Cypress, Green Giant, Arborvitae, and Laurels. Excellent for road and property barriers. Severson Farms, Springfield, OR. Call 541-228-6085

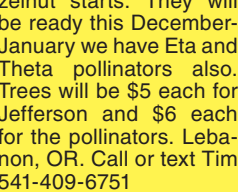
Blueberry (20 varieties), Raspberry, Marion, Boysen, Currant, Grape, Kiwi, Strawberry Plants. Canby, OR. 503-730-4788
www.canby.com/morningshade



Hazelnut Trees: McDonald, Jefferson, Yamhill, Wepster, York, Eta, Theta, Felix. Dayton, OR. 503-864-4422



Jefferson Hazelnut Trees: We are currently taking orders for Jefferson hazelnut starts. They will be ready this December-January we have Eta and Theta pollinators also. Trees will be \$5 each for Jefferson and \$6 each for the pollinators. Lebanon, OR. Call or text Tim 541-409-6751



824 Seed

Pasture Seed \$1.25/ lb. Lawn Seed \$1/ lb. Wheat Straw \$100/ ton. Grass hay \$120/ ton. Wheat \$6/ bag. Rickreall, OR. 503-623-6922

With Capital Press, I get more calls than any other type of ad.
This is the best advertising bang for the buck I have had!

Capital Press Ag Weekly It Works!!
Billy Hendrix Pacific Coast Handlers
Capital Press The West's Ag Weekly
800-882-6789
CapitalPress.com

824 Seed

Yanmar 2 row binder model YB650 walk behind harvester for small grain plots, \$1000. Wilits, CA. 707-459-2643

Globe Commercial Meat Slicer Model 3600, 110VAC, \$1295. Fairbanks platform scale, 500 lb capacity, \$250. F. Dick 12 liter sausage stuffer, \$1,050. Heavy Duty (12 gauge) stainless steel stock pots, lids. All 10" diameter, 3.5 gallon, \$50, 5.0 gallon, \$75, 5.5 gallon, \$85. Washtucna, WA. 509-431-8061, 509-646-3315

824 Seed

824 Seed

Quality VNS Alfalfa Seed: \$2.00/ lb. Kreggers, Touchet, WA. Chris 509-394-2400

ALFALFA SEED \$2.70/LB.

Alfalfa Seed, \$2.70/ lb., Dormancy 4. Tests well with great persistence and winter hardiness. Inoculated in 50 lb. bags. Kuna, ID. Contact Dave 208-890-1066 or Jessica 208-761-2720 or email seed@daverenoldsfarms.com

825 Fertilizer

Chicken Manure and/or Litter

For sale in truckload lots, delivered. OR./ WA. Call 541-602-9477 or e-mail: info@potentgrow.com

Organic Fertilizer: PotentGrow 5-2-2 organic fertilizer pellets. Product of Washington State. WSDA approved for organic use. Made from Chicken Litter and Canola Seed Meal. Available in bulk, 1-ton totes, 25 pound bags. OR./ WA. For pricing and freight quotes call 541-602-9477 or e-mail: info@potentgrow.com

CHICKEN LITTER/ MANURE: OR./ WA. Delivery available. Call/ text 360-520-6782 or email: bowtech52@gmail.com

826 Organic

Certified organic Alfalfa, 1st cutting, 10 loads, delivery available. Fort Rock, OR. 541-290-1710

Approx 700 tons organic wheat hay, \$170/ ton. Approx 450 tons organic barley hay, \$170/ ton. All hay in 3x4 bales. Klamath Falls, OR. 541-892-2706

Alfalfa Hay, 3rd cut and Triticale/ Alfalfa mix, 3x4 bales, certified organic. Othello, WA. 509-989-2141

Organic Alfalfa: 3x4 bales, nice green hay, no rain. Delivery available. Nyssa, OR. Call 541-823-2769

Organic Oat Hay 250 ton clean 3x4 bales. Delivery available. Nyssa, OR. 541-823-2769

828 Misc for Sale

EMU BUSINESS

Circumstances force sale of Emu business including livestock, equipment, end by-product and full support hands on training for the first year. Turnkey business that could start generating income tomorrow. New applications of emu oil in the medicinal Cannabis industry has opened new ground floor opportunities for emu producers. We are on the threshold of laying season starting November with the capability of producing up to 200 chicks. Located 12 miles East of Redding, CA. All reasonable offers considered, flexible terms. Call 530-524-6388



Globe Commercial Meat Slicer Model 3600, 110VAC, \$1295. Fairbanks platform scale, 500 lb capacity, \$250. F. Dick 12 liter sausage stuffer, \$1,050. Heavy Duty (12 gauge) stainless steel stock pots, lids. All 10" diameter, 3.5 gallon, \$50, 5.0 gallon, \$75, 5.5 gallon, \$85. Washtucna, WA. 509-431-8061, 509-646-3315

824 Seed

869 Livestock Equip. & Supplies

Hay feeding wagon, fits 4 large bales, highway usable, \$1200. Cattle Squeeze Chute: manual, \$850. Oregon City, OR. 503-655-6466



2005 Elite 6-horse, from three 8x10 to six 4x10 stalls. Dividers store inside trailer. 8'4" interior height, fully insulated. air ride, water buckets don't spill a drop. Rear and side ramps, access doors and roof vents for all stalls. Exterior LED lighting, new tires. Electric over hydraulic brakes, \$40,000. Stayton, OR. 503-559-9966

HEAVY DUTY POWDER RIVER: Feeder panels- (3) 12', \$175 each. (1) 10', \$150. (1) 8', \$145. (2) 12', 5 rail, \$110 each. (2) 4' bow gates, \$200 each. (1) Alley bow, \$80. Post to panel hardware, \$25. All for \$1250. Cash only. Klamath Falls, OR. 503-556-1303, 503-484-4592

Livestock Panels: 16' (6) rail, (3) brace, \$128 each. 12' panels, (6) rail, (2) brace, \$96. Bow gates, all lengths and sizes. These panels are new Green color, hundreds available. **Heavy 16' Feeder Panels,** \$330 each. La Grande, OR. 541-805-9279, 541-963-6258



872 Dairy Eq. & Supplies

Polydome Calf Nursery: Hutchess available for various climates. Western Polydome, Inc. Monroeville, WA. 800-822-5837

Buying or Selling Capital Press is here to help you! 1-800-882-6789 or FAX 503-370-4383 CapitalPress.com



400 bu. • BUY OR RENT Call Scott at Barr-Tech Compost/Organics Recycling Authorized Dealer of PK RITE Spreaders 509-590-0437 www.Barr-Tech.net Sprague, WA 34-1/104

875 Tanks & Storage

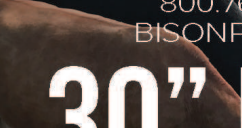
FUEL TANK: (1) 5000 gallon UL2085, split 2500/2500. Salem, OR. Peter 503-881-9803



316 SS Dome Bottom Tank: 6,500 gallon, \$1.55 per gallon. Hermiston, OR. 541-571-0514 email: 53hchull@gmail.com

869 Livestock Equip. & Supplies

Briggs & Stratton electric generator, 8 hp, rated watts 5000, pull start, \$350. Touchet, WA. 509-730-1119



869 Livestock Equip. & Supplies

BISON PIPE & SUPPLY. 800.764.7473 BISONPIPE.COM

30" PIPE FOR BUNK MATERIAL CALL FOR PRICING

OTHER SIZES AVAILABLE!
240 E. FRONTAGE RD. N., JEROME, ID 83338

887 Irrigation Equip.

887 Irrigation Equip.

Your Leading Source for Irrigation Supplies

HPS Pipe & Supply

• Drip Irrigation • Filtration • Design
598 Baseline, Cornelius, OR 97113
Phone (503) 357-4217
www.hspipe.com
info@hspipe.com

WATER MASTER SERIES AND EVERGREEN SUPERIOR SERVICE & DESIGN
• All your needs for irrigation parts service
• We build custom equipment for your special needs.
• Hose replacements & fusion repairs
• Transport Tanks • Rental Returns & Used Equipment
• US Dairy Waste Equipment

VALLEY WORKMAN Truck Equipment
• Full Service
• Alterations
• Dump bodies • Hoists
• Flatbeds • Flatbeds

VALLEY FAB CORP
10910 Portland Rd. NE • Brooks, OR
Call: 503-792-3739 • Fax: 503-792-3738

875 Tanks & Storage



PUMP & TANK: Viking 4125 Rotary 2" pump with 7.5 HP 230/460v 3ph motor, Viking helical gear reduction drive, and pressure relief valve, \$1,500. 5000 gallon round vertical carbon steel tank with food grade coating for liquids. Sloped bottom, center discharge outlet. 18' Tall x 10' Diameter \$3,500. Both for \$4250. Eugene, OR. Contact Julie Crooks 541-689-0913

PLASTIC TOTES: Like new 275 gallon totes, \$129. Discounts on 6 or more at \$115 each. Loading time: Monday-Thursday 9:30-4:30, Friday 9:30-3:00 only. GloryBee Factory Store, 29548 B Airport Rd, Eugene, OR. 541-689-0919

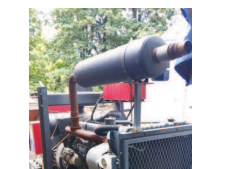
55 GALLON DRUM SALE: Plastic drums \$9.95. Metal drums with open top, \$10. Discounts available on purchase of 10 or more. Loading time: Monday- Thursday 9:30-4:30, Friday 9:30-3:00 only. GloryBee Factory Store, 29548 B Airport Rd, Eugene, OR. 541-689-0919



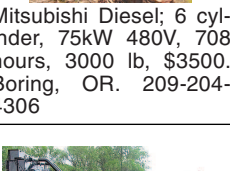
12'x28' Steel Tank with liner, \$3500. Delivery Available. Sandy, OR. Call Pat 503-407-9062

878 Generators

CAT Generator D333: 100kW, \$7500 with panels. Ridgefield, WA. 360-903-6643



Mitsubishi Diesel: 6 cylinder, 75kW 480V, 708 hours, 3000 lb, \$3500. Boring, OR. 209-204-4306



GENERATORS:

Low hour takeouts, 20kW to 2000kW, diesel, propane, & natural gas. Cooperstown, ND. We ship nationwide. 701-371-9526 or 701-367-4305 abrahamindustrial.com

Briggs & Stratton electric generator, 8 hp, rated watts 5000, pull start, \$350. Touchet, WA. 509-730-1119

869 Livestock Equip. & Supplies

BISON PIPE & SUPPLY. 800.764.7473 BISONPIPE.COM

30" PIPE FOR BUNK MATERIAL CALL FOR PRICING

OTHER SIZES AVAILABLE!
240 E. FRONTAGE RD. N., JEROME, ID 83338

887 Irrigation Equip.

887 Irrigation Equip.

Your Leading Source for Irrigation Supplies

HPS Pipe & Supply

• Drip Irrigation • Filtration • Design
598 Baseline, Cornelius, OR 97113
Phone (503) 357-4217
www.hspipe.com
info@hspipe.com

WATER MASTER SERIES AND EVERGREEN SUPERIOR SERVICE & DESIGN
• All your needs for irrigation parts service
• We build custom equipment for your special needs.
• Hose replacements & fusion repairs
• Transport Tanks • Rental Returns & Used Equipment
• US Dairy Waste Equipment

VALLEY WORKMAN Truck Equipment
• Full Service
• Alterations
• Dump bodies • Hoists
• Flatbeds • Flatbeds

VALLEY FAB CORP
10910 Portland Rd. NE • Brooks, OR
Call: 503-792-3739 • Fax: 503-792-3738